

COUNT	DESCRIPTION OF REVISIONS	BY	CHKD	DATE	COUNT	DESCRIPTION OF REVISIONS	BY	CHKD	DATE

APPLICATION PATTERN

DF14-*S-1.25C
DF14-4P-1.25H(56)
基板
CABLE

RECOMMENDED PATTERN

THIS DRAWING FOR REFERENCE

NOTE

1. LEAD CO-PLANALITY INCLUDE REINFORCED METAL FITTING SHALL BE 0.1 MAX.
2. WHEN THIS CONNECTOR MATES WITH DF14-*S-1.25C, THE MATTING LENGTH IS 7.3mm.
3. FOR CONNECTORS, 2 OR 3 CONTACTS, SIMPLIFIED LOCK HOLE SHALL BE SET AT THE CENTER OF HOUSING.

APPLICATION PATTERN

CAV. NO.

RECOMMENDED PATTERN

NO.	MATERIAL	FINISH, REMARKS	NO.	MATERIAL	FINISH, REMARKS
2	BRASS	CONTACT AREA: GOLD PLATED 0.1μm min LEAD AREA: TIN-COPPER PLATED 1μm min	5	POLYESTER	CLEAR(COVER TAPE)
1	POLYAMIDE	UNDER PLATING: NICKEL PLATED 1μm min BEIGE, UL94V-0	4	A-PET	CLEAR (EMBOSSED CARRIER TAPE)
NO.	MATERIAL	FINISH, REMARKS	3	PHOSPHOR BRONZE	TIN-COPPER PLATED 1μm min UNDER PLATING: NICKEL PLATED 0.5μm min

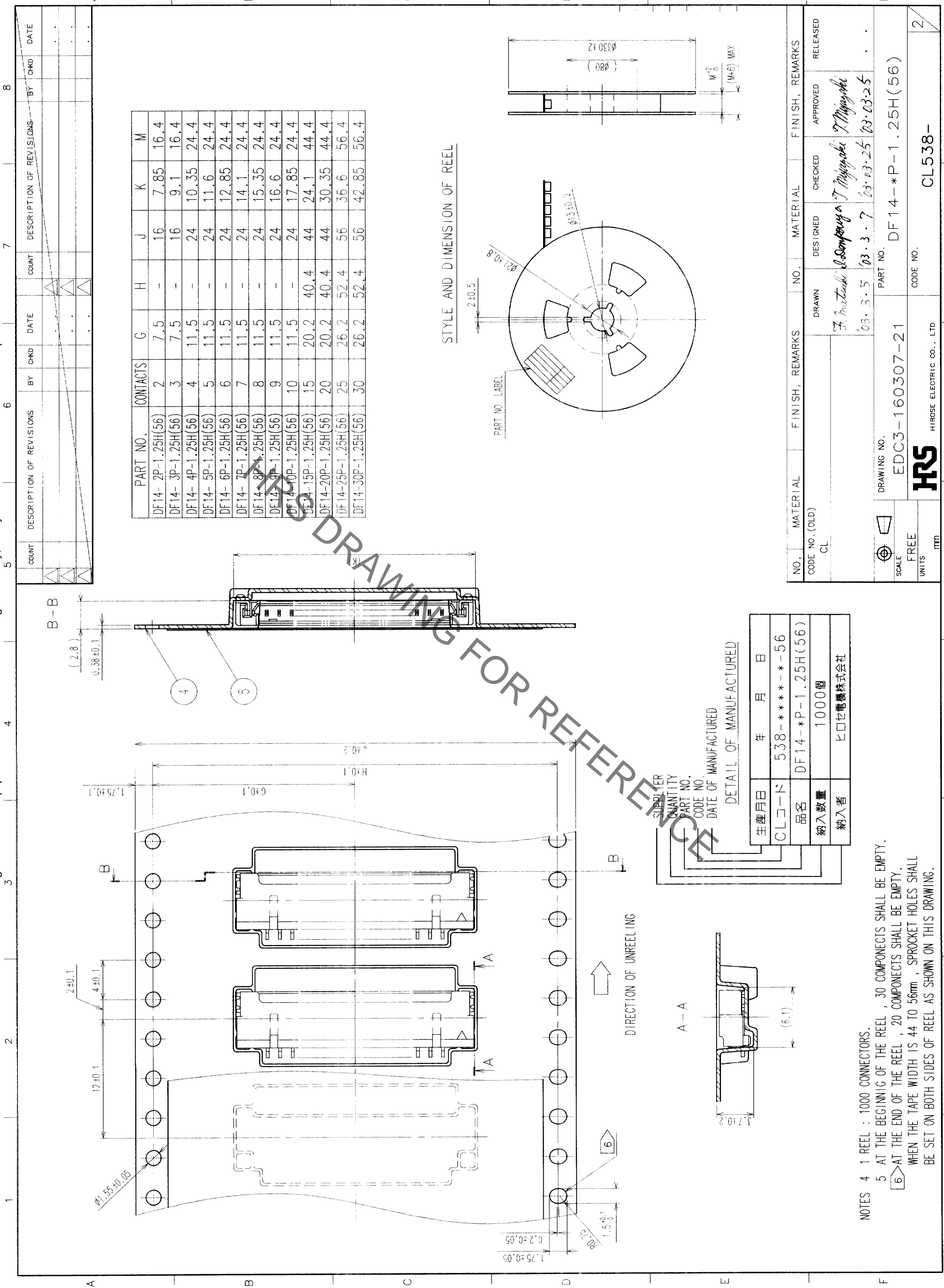
CODE NO. (OLD)	CL	DRAWING NO.	SCALE	UNITS	DESIGNED	CHECKED	APPROVED	RELEASED
		EDC3-160307-21	5 : 1	mm	<i>F. Matsuki</i>	<i>I. Sanyaya</i>	<i>T. Miyajima</i>	
					03.3.5	03.3.7	03.03.25	03.03.25

DRAWING NO.	PART NO.
EDC3-160307-21	DF14-*P-1.25H(56)

NO.	CONTACTS	HRS. NO.	CONTACTS
DF14-2P-1.25H(56)	2	CL538-0021-4-56	2
DF14-3P-1.25H(56)	3	CL538-0022-7-56	3
DF14-4P-1.25H(56)	4	CL538-0023-0-56	4
DF14-5P-1.25H(56)	5	CL538-0024-2-56	5
DF14-6P-1.25H(56)	6	CL538-0025-5-56	6
DF14-7P-1.25H(56)	7	CL538-0026-8-56	7
DF14-8P-1.25H(56)	8	CL538-0027-0-56	8
DF14-9P-1.25H(56)	9	CL538-0028-3-56	9
DF14-10P-1.25H(56)	10	CL538-0029-6-56	10
DF14-15P-1.25H(56)	15	CL538-0084-4-56	15
DF14-20P-1.25H(56)	20	CL538-0089-8-56	20
DF14-25P-1.25H(56)	25	CL538-0094-8-56	25
DF14-30P-1.25H(56)	30	CL538-0020-1-56	30

TO	DATE	BY	CHKD	DATE

Sep.1.2019 Copyright 2019 HIROSE ELECTRIC CO., LTD. All Rights Reserved.
In case of consideration for using Automotive equipment / device which demand high reliability, kindly contact our sales window correspondents.



PART NO.	CONTACTS	G	H	J	K	M
DF14-2P-1.25H(56)	2	7.5	-	16	7.85	16.4
DF14-3P-1.25H(56)	3	7.5	-	16	9.1	16.4
DF14-4P-1.25H(56)	4	11.5	-	24	10.35	24.4
DF14-5P-1.25H(56)	5	11.5	-	24	11.6	24.4
DF14-6P-1.25H(56)	6	11.5	-	24	12.85	24.4
DF14-7P-1.25H(56)	7	11.5	-	24	14.1	24.4
DF14-8P-1.25H(56)	8	11.5	-	24	15.35	24.4
DF14-9P-1.25H(56)	9	11.5	-	24	16.6	24.4
DF14-10P-1.25H(56)	10	11.5	-	24	17.85	24.4
DF14-15P-1.25H(56)	15	20.2	40.4	44	24.1	44.4
DF14-20P-1.25H(56)	20	20.2	40.4	44	30.35	44.4
DF14-25P-1.25H(56)	25	26.2	52.4	56	36.6	56.4
DF14-30P-1.25H(56)	30	26.2	52.4	56	42.85	56.4

STYLE AND DIMENSION OF REEL

DETAIL OF MANUFACTURED	
生産月日	年 月 日
CLコード	538-**-**-56
品名	DF14-*P-1.25H(56)
納入数量	1000個
納入者	ヒロセ電機株式会社

NOTES
 4 1 REEL : 1000 CONNECTORS.
 5 AT THE BEGINNIG OF THE REEL , 30 COMPONENTS SHALL BE EMPTY.
 6 AT THE END OF THE REEL , 20 COMPONENTS SHALL BE EMPTY.
 WHEN THE TAPE WIDTH IS 44 TO 56mm , SPROCKET HOLES SHALL BE SET ON BOTH SIDES OF REEL AS SHOWN ON THIS DRAWING.

NO.	MATERIAL	FINISH, REMARKS	NO.	MATERIAL	FINISH, REMARKS
CL					

DESCRIPTION OF REVISIONS	BY	CHKD	DATE	COUNT	DESCRIPTION OF REVISIONS	BY	CHKD	DATE

NO.	MATERIAL	FINISH, REMARKS	NO.	MATERIAL	FINISH, REMARKS
DF14-30P-1.25H(56)			DF14-*P-1.25H(56)		

SCALE	DRAWING NO.	PART NO.
FREE	EDC3-160307-21	DF14-*P-1.25H(56)

UNITS	CODE NO.
ITM	CL538-



X-ON Electronics

Largest Supplier of Electrical and Electronic Components

Click to view similar products for [Headers & Wire Housings](#) category:

Click to view products by [Hirose](#) manufacturer:

Other Similar products are found below :

[892-18-020-10-001101](#) [58102-G61-06LF](#) [582553-1](#) [0009485154](#) [009176003701906](#) [0050291907](#) [LY20-4P-DT1-P1E-BR](#) [02.125.8002.8](#)
[609-3404](#) [61062-3](#) [622-0430](#) [622-3653LF](#) [63453-116](#) [636-1030](#) [636-1427](#) [636-3427](#) [636-4007](#) [641938-9](#) [641991-4](#) [644827-2](#) [65817-010LF](#)
[65817-015LF](#) [65863-015LF](#) [66207-023LF](#) [67095-007LF](#) [67601157](#) [68648-049](#) [70.362.1628.0](#) [70-4210](#) [70-4226B](#) [70-4853B](#) [707-5020](#) [707-](#)
[5028](#) [71.350.2428.0](#) [71918-208LF](#) [71961-016LF](#) [733-134](#) [733-162](#) [754199-000](#) [760-3052](#) [787-8014-00](#) [79531-3000](#) [FCN-360C032-B](#) [FCN-](#)
[367T-T012/H](#) [FCN-723D010/2](#) [80.063.4001.1](#) [800-90-001-10-001000](#) [800-90-010-10-002000](#) [801-43-002-10-013000](#) [801-43-006-10-002000](#)