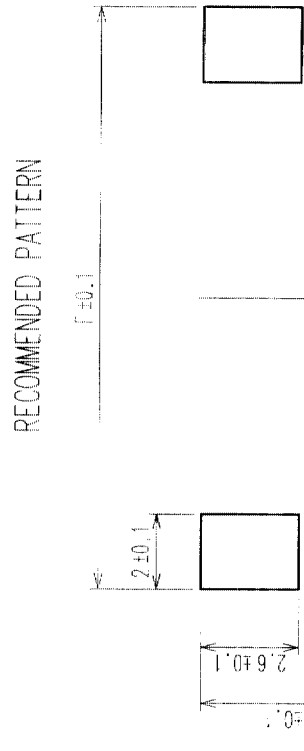
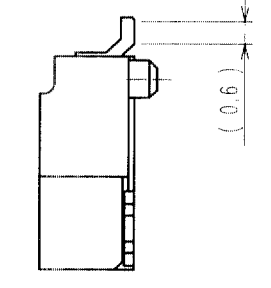
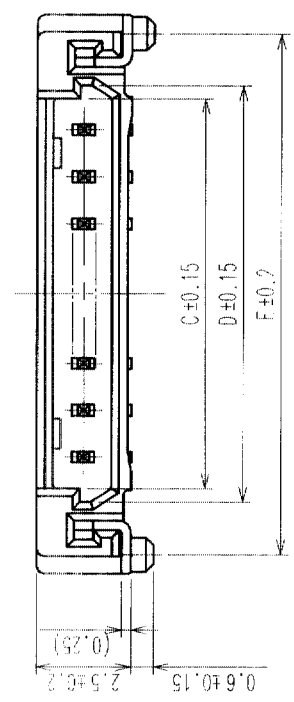
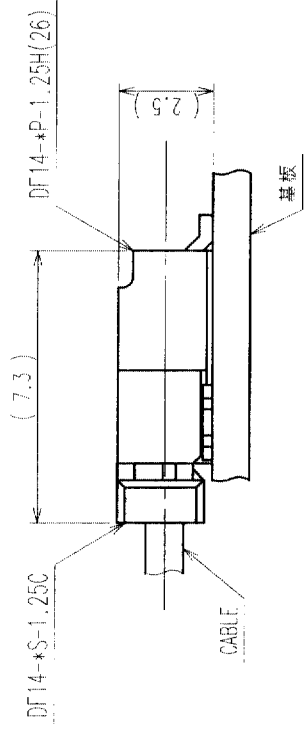


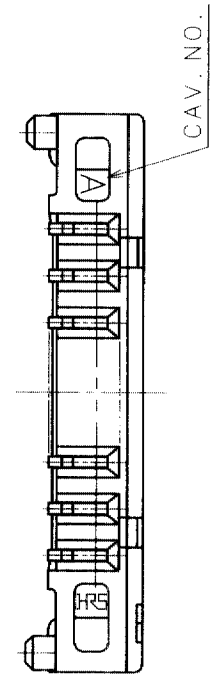
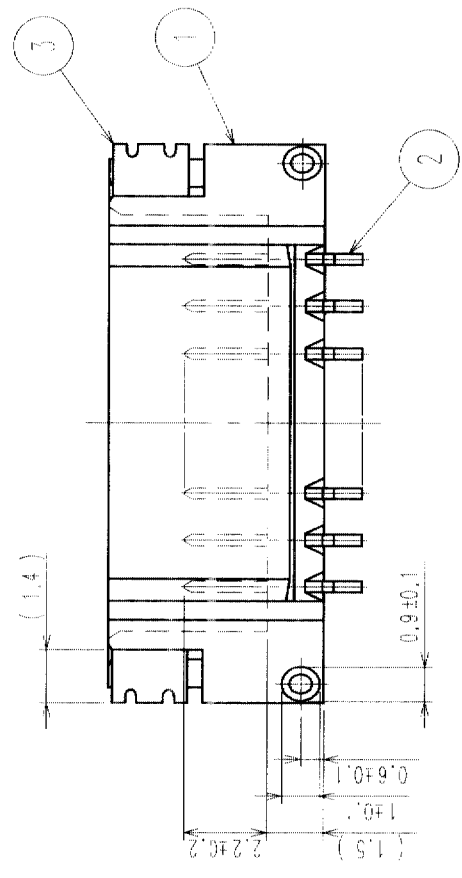
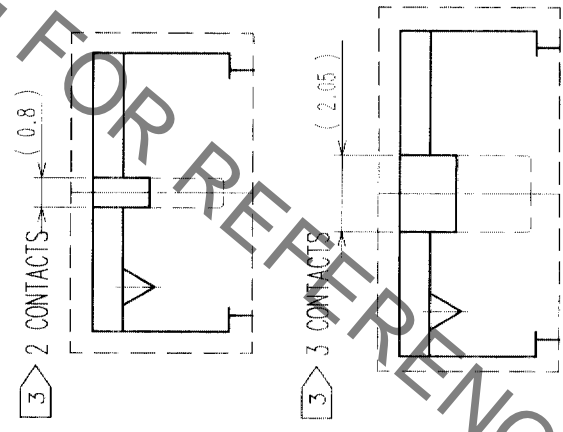
COUNT	DESCRIPTION OF REVISIONS	BY	CHKD	DATE	COUNT	DESCRIPTION OF REVISIONS	BY	CHKD	DATE

PART NO.	HRS NO.	CONTACTS	A	B	C	D	E	F
DF14-2P-1.25H(26)	CL538-0021-4-26	2	7.45	1.25	2.95	3.65	6.45	8.05
DF14-3P-1.25H(26)	CL538-0022-7-26	3	8.70	2.50	4.20	4.90	7.70	9.30
DF14-4P-1.25H(26)	CL538-0023-0-26	4	9.95	3.75	5.45	6.15	8.95	10.55
DF14-5P-1.25H(26)	CL538-0024-2-26	5	11.20	5.00	6.70	7.40	10.20	11.80
DF14-6P-1.25H(26)	CL538-0025-5-26	6	12.45	6.25	7.95	8.65	11.45	13.05
DF14-7P-1.25H(26)	CL538-0026-8-26	7	13.70	7.50	9.20	9.90	12.70	14.30
DF14-8P-1.25H(26)	CL538-0027-0-26	8	14.95	8.75	10.45	11.15	13.95	15.55
DF14-9P-1.25H(26)	CL538-0028-3-26	9	16.20	10.00	11.70	12.40	15.20	16.80
DF14-10P-1.25H(26)	CL538-0029-6-26	10	17.45	11.25	12.95	13.65	16.45	18.05
DF14-15P-1.25H(26)	CL538-0084-4-26	15	23.70	17.50	19.20	19.90	22.70	24.30
DF14-20P-1.25H(26)	CL538-0089-8-26	20	29.95	23.75	25.45	26.15	28.95	30.55
DF14-25P-1.25H(26)	CL538-0094-8-26	25	36.20	30.00	31.70	32.40	35.20	36.80
DF14-30P-1.25H(26)	CL538-0020-1-26	30	42.45	36.25	37.95	38.65	41.45	43.05

2 APPLICATION PATTERN



RECOMMENDED PATTERN



NOTE 1. LEAD CO-PLANALITY INCLUDE REINFORCED METAL FITTING SHALL BE 0.1 MAX.
 2. WHEN THIS CONNECTOR MATES WITH DF14-4S-1.25C, THE MATTING LENGTH IS 7.3mm.
 3. FOR CONNECTORS, 2 OR 3 CONTACTS, SIMPLIFIED LOCK HOLE SHALL BE SET AT THE CENTER OF HOUSING.

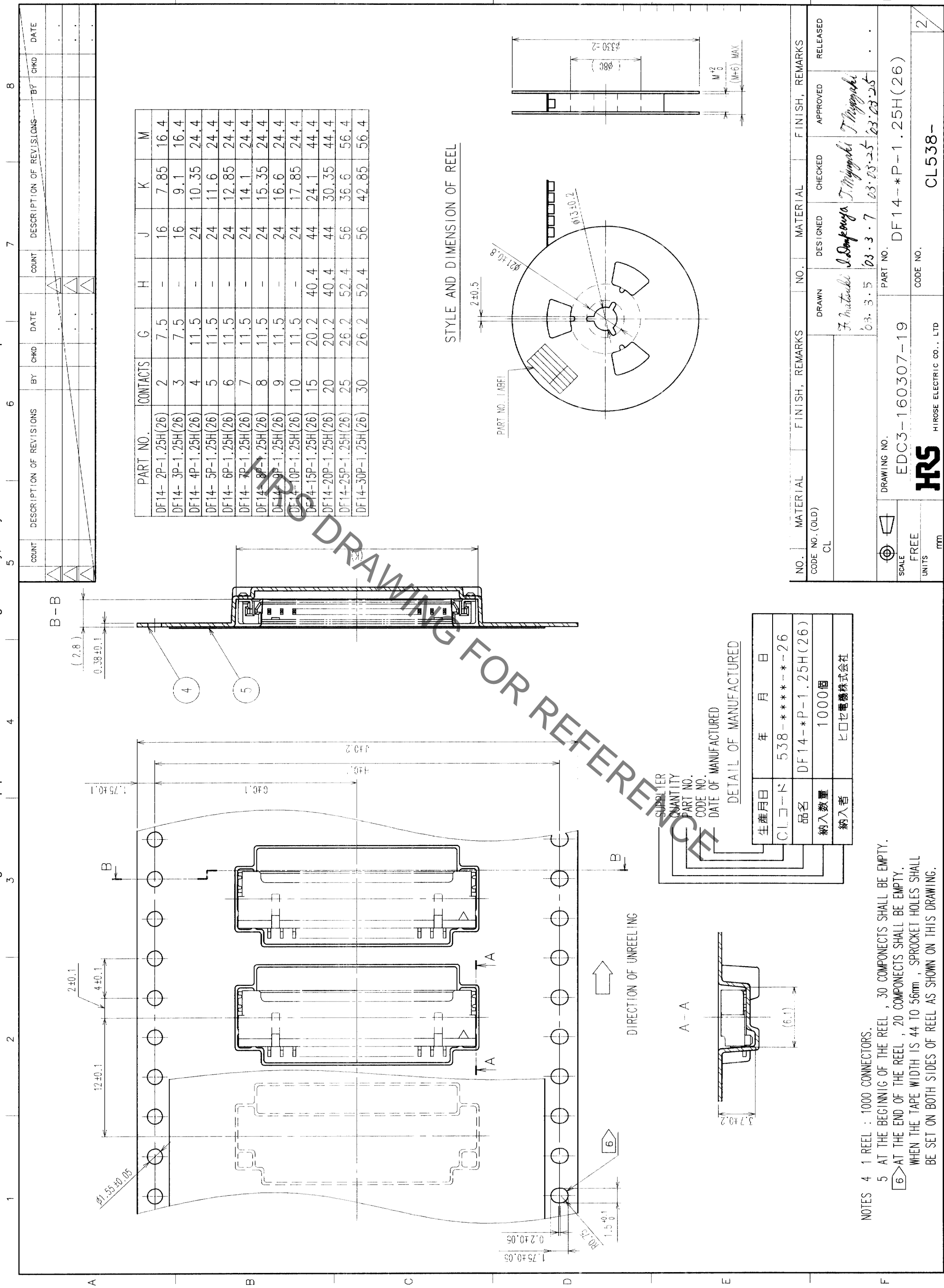
NO.	MATERIAL	FINISH, REMARKS	NO.	MATERIAL	FINISH, REMARKS
3	PHOSPHOR BRONZE	TIN-COPPER PLATED 1μm min UNDER PLATING:NICKEL PLATED 0.5μm min	5	POLYESTER	CLEAR(COVER TAPE)
2	BRASS	TIN-COPPER PLATED 1μm min UNDER PLATING:NICKEL PLATED 0.5μm min	4	A-PET	CLEAR (EMBOSSED CARRIER TAPE)
1	POLYAMIDE	BEIGE,UL94V-0			

CODE NO. (OLD)	CL	DRAWN	DESIGNED	CHECKED	APPROVED	RELEASED
		F. Inoue	S. Sankawa	T. Miyagaki	T. Miyagaki	
		03.3.5	03.3.7	03.03.25	03.03.25	

DRAWING NO.	PART NO.
EDC3-160307-19	DF14-4P-1.25H(26)

SCALE	UNITS	CODE NO.
5 : 1	MM	CL538-

Oct.1.2019 Copyright 2019 HIROSE ELECTRIC CO., LTD. All Rights Reserved.
 In case of consideration for using Automotive equipment / device which demand high reliability, kindly contact our sales window correspondents.

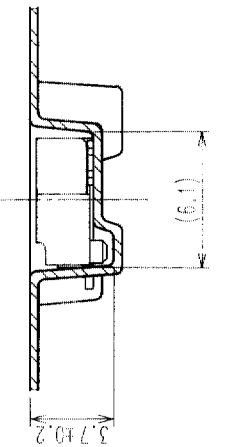


STYLE AND DIMENSION OF REEL

SUPPLIER
 QUANTITY
 PART NO.
 CODE NO.
 DATE OF MANUFACTURE

生産月日	年	月	日
CLコード	538-**-**-26		
品名	DF14-*P-1.25H(26)		
納入数量	1000個		
納入者	ヒロセ電機株式会社		

A-A



DIRECTION OF UNREELING

NOTES
 4 1 REEL : 1000 CONNECTORS.
 5 AT THE BEGINNING OF THE REEL , 30 COMPONENTS SHALL BE EMPTY.
 6 AT THE END OF THE REEL , 20 COMPONENTS SHALL BE EMPTY.
 WHEN THE TAPE WIDTH IS 44 TO 56mm , SPROCKET HOLES SHALL BE SET ON BOTH SIDES OF REEL AS SHOWN ON THIS DRAWING.

NO.	MATERIAL	FINISH, REMARKS	NO.	MATERIAL	FINISH, REMARKS
CODE NO. (OLD) CL			DRAWN F. Matsuda	DESIGNED S. Sano	CHECKED T. Miyazaki
			DATE 03.3.5	DATE 03.3.7	DATE 03.03.25
					APPROVED T. Miyazaki
					RELEASED

DRAWING NO. EDC3-160307-19 PART NO. DF14-*P-1.25H(26)
 SCALE FREE UNITS mm CODE NO. CL538-2

TO

2

X-ON Electronics

Largest Supplier of Electrical and Electronic Components

Click to view similar products for [Headers & Wire Housings](#) category:

Click to view products by [Hirose](#) manufacturer:

Other Similar products are found below :

[892-18-020-10-001101](#) [58102-G61-06LF](#) [582553-1](#) [0009485154](#) [009176003701906](#) [0050291907](#) [LY20-4P-DT1-P1E-BR](#) [02.125.8002.8](#)
[609-3404](#) [61062-3](#) [622-0430](#) [622-3653LF](#) [63453-116](#) [636-1030](#) [636-1427](#) [636-3427](#) [636-4007](#) [641938-9](#) [641991-4](#) [644827-2](#) [65817-010LF](#)
[65817-015LF](#) [65863-015LF](#) [66207-023LF](#) [67095-007LF](#) [67601157](#) [68648-049](#) [70.362.1628.0](#) [70-4210](#) [70-4226B](#) [70-4853B](#) [707-5020](#) [707-5028](#) [71.350.2428.0](#) [71918-208LF](#) [71961-016LF](#) [733-134](#) [733-162](#) [754199-000](#) [760-3052](#) [787-8014-00](#) [79531-3000](#) [FCN-360C032-B](#) [FCN-367T-T012/H](#) [FCN-723D010/2](#) [80.063.4001.1](#) [800-90-001-10-001000](#) [800-90-010-10-002000](#) [801-43-002-10-013000](#) [801-43-006-10-002000](#)