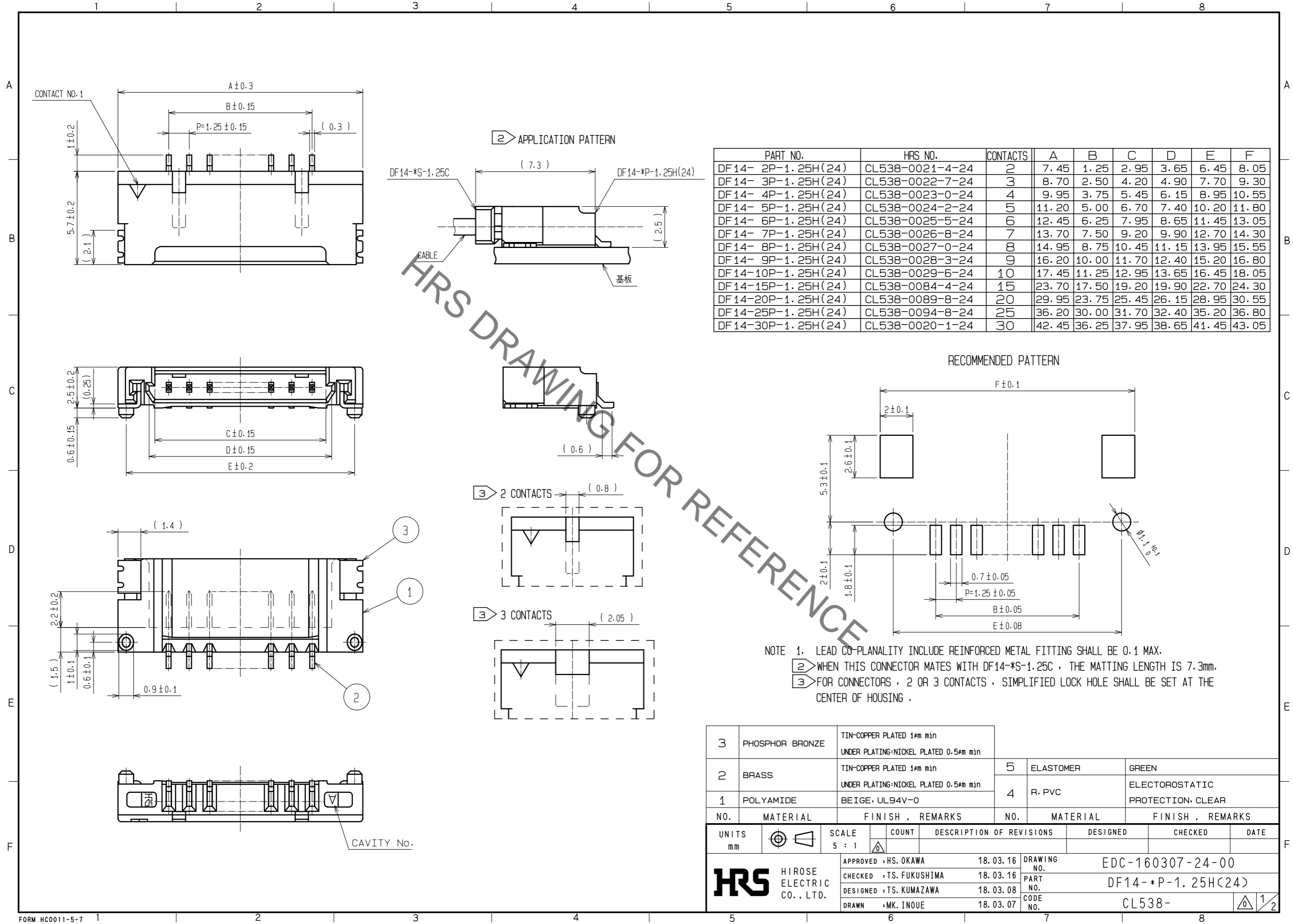
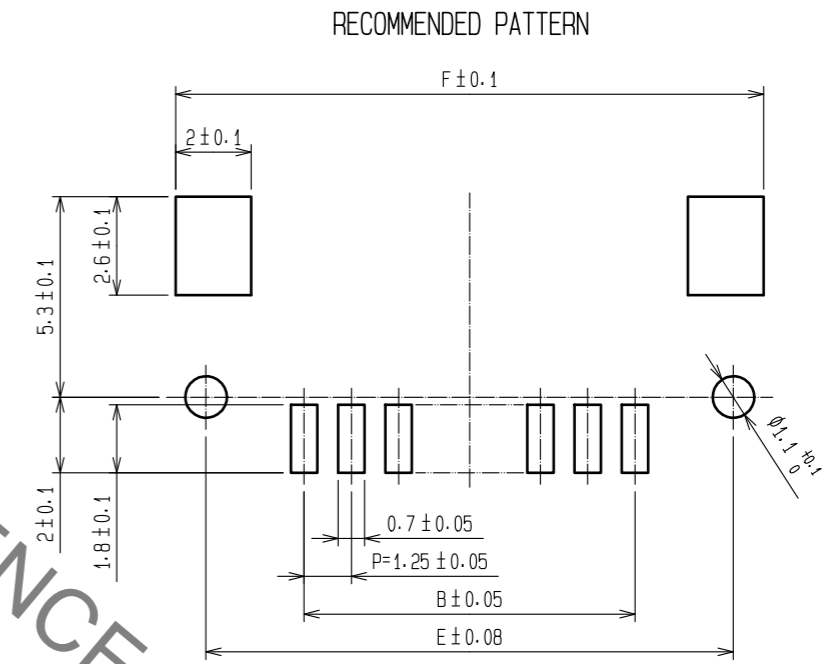


Jun.1.2020 Copyright 2020 HIROSE ELECTRIC CO., LTD. All Rights Reserved.  
In case of consideration for using Automotive equipment / device which demand high reliability, kindly contact our sales window correspondents.



| PART NO.            | HRS NO.         | CONTACTS | A     | B     | C     | D     | E     | F     |
|---------------------|-----------------|----------|-------|-------|-------|-------|-------|-------|
| DF 14- 2P-1.25H(24) | CL538-0021-4-24 | 2        | 7.45  | 1.25  | 2.95  | 3.65  | 6.45  | 8.05  |
| DF 14- 3P-1.25H(24) | CL538-0022-7-24 | 3        | 8.70  | 2.50  | 4.20  | 4.90  | 7.70  | 9.30  |
| DF 14- 4P-1.25H(24) | CL538-0023-0-24 | 4        | 9.95  | 3.75  | 5.45  | 6.15  | 8.95  | 10.55 |
| DF 14- 5P-1.25H(24) | CL538-0024-2-24 | 5        | 11.20 | 5.00  | 6.70  | 7.40  | 10.20 | 11.80 |
| DF 14- 6P-1.25H(24) | CL538-0025-5-24 | 6        | 12.45 | 6.25  | 7.95  | 8.65  | 11.45 | 13.05 |
| DF 14- 7P-1.25H(24) | CL538-0026-8-24 | 7        | 13.70 | 7.50  | 9.20  | 9.90  | 12.70 | 14.30 |
| DF 14- 8P-1.25H(24) | CL538-0027-0-24 | 8        | 14.95 | 8.75  | 10.45 | 11.15 | 13.95 | 15.55 |
| DF 14- 9P-1.25H(24) | CL538-0028-3-24 | 9        | 16.20 | 10.00 | 11.70 | 12.40 | 15.20 | 16.80 |
| DF 14-10P-1.25H(24) | CL538-0029-6-24 | 10       | 17.45 | 11.25 | 12.95 | 13.65 | 16.45 | 18.05 |
| DF 14-15P-1.25H(24) | CL538-0084-4-24 | 15       | 23.70 | 17.50 | 19.20 | 19.90 | 22.70 | 24.30 |
| DF 14-20P-1.25H(24) | CL538-0089-8-24 | 20       | 29.95 | 23.75 | 25.45 | 26.15 | 28.95 | 30.55 |
| DF 14-25P-1.25H(24) | CL538-0094-8-24 | 25       | 36.20 | 30.00 | 31.70 | 32.40 | 35.20 | 36.80 |
| DF 14-30P-1.25H(24) | CL538-0020-1-24 | 30       | 42.45 | 36.25 | 37.95 | 38.65 | 41.45 | 43.05 |



NOTE 1. LEAD CO-PLANALITY INCLUDE REINFORCED METAL FITTING SHALL BE 0.1 MAX.  
 ② WHEN THIS CONNECTOR MATES WITH DF14-\*S-1.25C , THE MATTING LENGTH IS 7.3mm.  
 ③ FOR CONNECTORS , 2 OR 3 CONTACTS , SIMPLIFIED LOCK HOLE SHALL BE SET AT THE CENTER OF HOUSING .

| NO. | MATERIAL        | FINISH .                  | REMARKS                               | NO. | MATERIAL  | FINISH . | REMARKS                         |
|-----|-----------------|---------------------------|---------------------------------------|-----|-----------|----------|---------------------------------|
| 3   | PHOSPHOR BRONZE | TIN-COPPER PLATED 1#m min | UNDER PLATING:NICKEL PLATED 0.5#m min | 5   | ELASTOMER |          | GREEN                           |
| 2   | BRASS           | TIN-COPPER PLATED 1#m min | UNDER PLATING:NICKEL PLATED 0.5#m min | 4   | R. PVC    |          | ELECTROSTATIC PROTECTION: CLEAR |
| 1   | POLYAMIDE       | BEIGE . UL94V-0           |                                       |     |           |          |                                 |

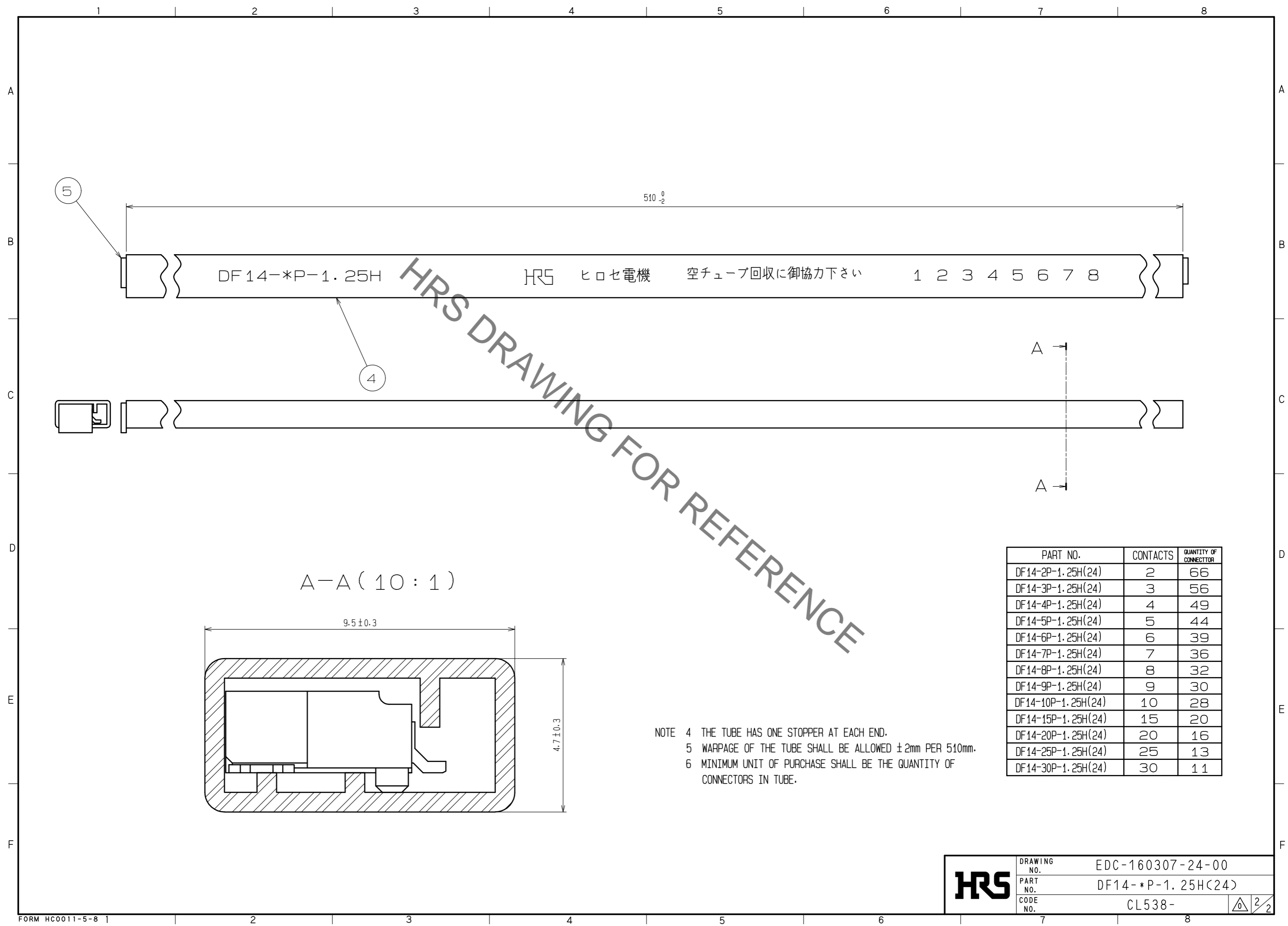
  

| UNITS | SCALE | COUNT | DESCRIPTION OF REVISIONS | DESIGNED | CHECKED | DATE |
|-------|-------|-------|--------------------------|----------|---------|------|
| mm    | 5 : 1 | △     |                          |          |         |      |

|                         |          |             |                    |
|-------------------------|----------|-------------|--------------------|
| APPROVED : HS. OKAWA    | 18.03.16 | DRAWING NO. | EDC-160307-24-00   |
| CHECKED : TS. FUKUSHIMA | 18.03.16 | PART NO.    | DF14- *P-1.25H(24) |
| DESIGNED : TS. KUMAZAWA | 18.03.08 | CODE NO.    | CL538-             |
| DRAWN : MK. INOUE       | 18.03.07 |             |                    |

Jun.1.2020 Copyright 2020 HIROSE ELECTRIC CO., LTD. All Rights Reserved.  
 In case of consideration for using Automotive equipment / device which demand high reliability, kindly contact our sales window correspondents.



DF14-\*P-1.25H HRS ヒロセ電機 空チューブ回収に御協力下さい 1 2 3 4 5 6 7 8

A-A (10:1)

NOTE 4 THE TUBE HAS ONE STOPPER AT EACH END.  
 5 WARPAGE OF THE TUBE SHALL BE ALLOWED ±2mm PER 510mm.  
 6 MINIMUM UNIT OF PURCHASE SHALL BE THE QUANTITY OF CONNECTORS IN TUBE.

| PART NO.           | CONTACTS | QUANTITY OF CONNECTOR |
|--------------------|----------|-----------------------|
| DF14-2P-1.25H(24)  | 2        | 66                    |
| DF14-3P-1.25H(24)  | 3        | 56                    |
| DF14-4P-1.25H(24)  | 4        | 49                    |
| DF14-5P-1.25H(24)  | 5        | 44                    |
| DF14-6P-1.25H(24)  | 6        | 39                    |
| DF14-7P-1.25H(24)  | 7        | 36                    |
| DF14-8P-1.25H(24)  | 8        | 32                    |
| DF14-9P-1.25H(24)  | 9        | 30                    |
| DF14-10P-1.25H(24) | 10       | 28                    |
| DF14-15P-1.25H(24) | 15       | 20                    |
| DF14-20P-1.25H(24) | 20       | 16                    |
| DF14-25P-1.25H(24) | 25       | 13                    |
| DF14-30P-1.25H(24) | 30       | 11                    |

|            |             |                   |
|------------|-------------|-------------------|
| <b>HRS</b> | DRAWING NO. | EDC-160307-24-00  |
|            | PART NO.    | DF14-*P-1.25H(24) |
|            | CODE NO.    | CL538-            |

2/2

## X-ON Electronics

Largest Supplier of Electrical and Electronic Components

*Click to view similar products for [Headers & Wire Housings](#) category:*

*Click to view products by [Hirose](#) manufacturer:*

Other Similar products are found below :

[95000-104TRLF](#) [10135584-644402LF](#) [DF62W-EP2022PCA](#) [95000-106TRLF](#) [DF62W-2022SCA](#) [DF62W-EP2022PC](#) [2203348](#) [DF62W-2022SC](#) [1084018](#) [1029039](#) [1084017](#) [802-10-012-10-002000](#) [1112640](#) [1112639](#) [891-007-9SS-BST1T](#) [000-34000](#) [0008550134](#) [0009482033](#) [0009507031](#) [57102-F02-18ULF](#) [57102-S06-03LF](#) [57202-S52-04LF](#) [PCN6-15S-2.5E](#) [0039019024](#) [58102-G61-06LF](#) [582553-1](#) [0009485154](#) [0009508121](#) [0022285053](#) [0050291907](#) [018731A](#) [LY20-4P-DT1-P1E-BR](#) [02.125.8002.8](#) [60101931](#) [60598-1 \(Cut Strip\)](#) [M1625-3R/100](#) [61062-3](#) [61082-181009](#) [CSU011177004](#) [636-1427](#) [638009-1](#) [641938-9](#) [641991-4](#) [644168-1](#) [644827-2](#) [647662-1](#) [65039-019ELF](#) [65692-001LF](#) [65781-018](#) [65781-047](#)