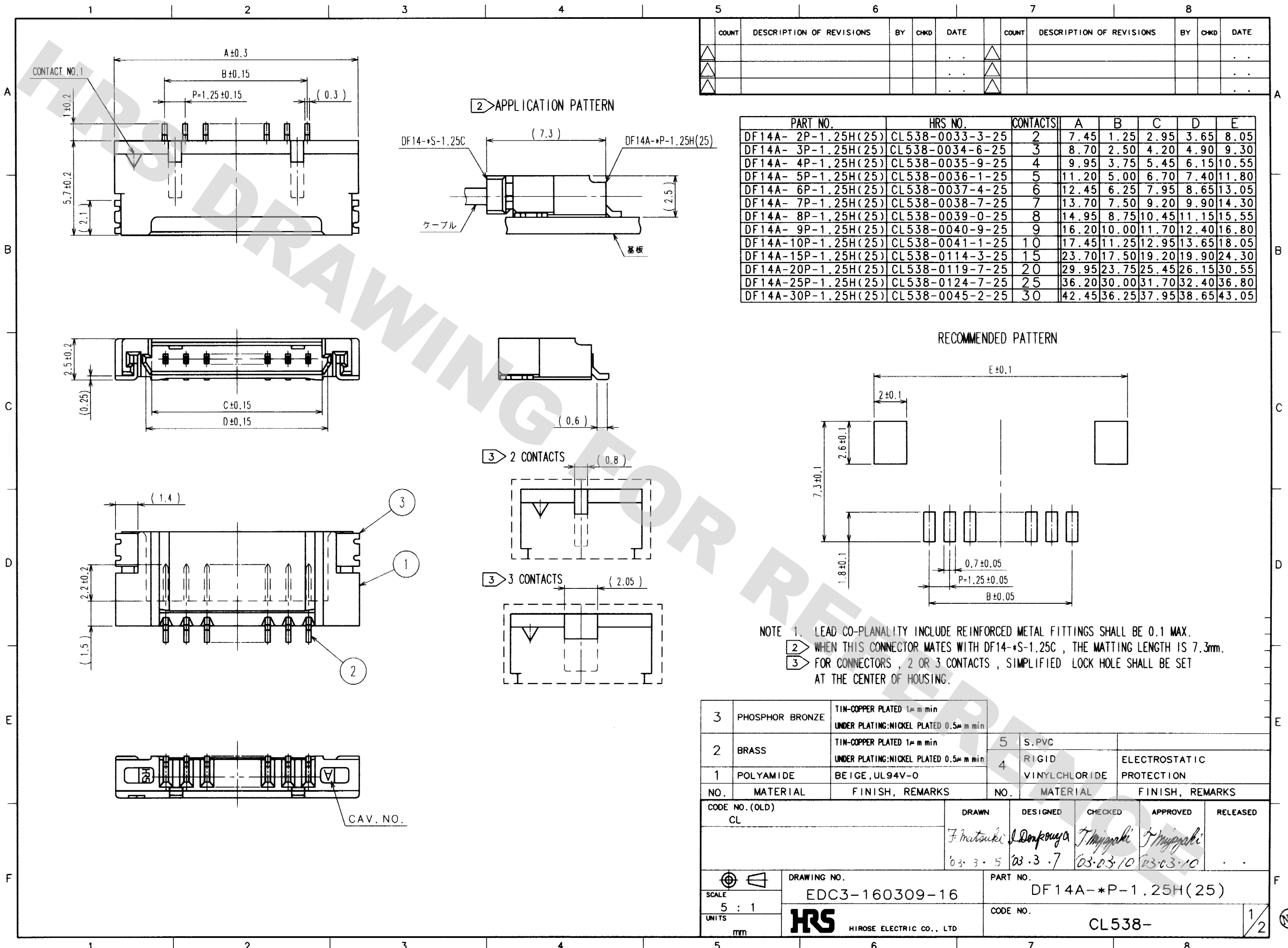


DRAWING FOR REFERENCE: This is subject to change without notice
08/11/2012

TO



COUNT	DESCRIPTION OF REVISIONS	BY	CHKD	DATE	COUNT	DESCRIPTION OF REVISIONS	BY	CHKD	DATE
△					△				
△					△				
△					△				

PART NO.	HRS NO.	CONTACTS	A	B	C	D	E
DF14A- 2P-1.25H(25)	CL538-0033-3-25	2	7.45	1.25	2.95	3.65	8.05
DF14A- 3P-1.25H(25)	CL538-0034-6-25	3	8.70	2.50	4.20	4.90	9.30
DF14A- 4P-1.25H(25)	CL538-0035-9-25	4	9.95	3.75	5.45	6.15	10.55
DF14A- 5P-1.25H(25)	CL538-0036-1-25	5	11.20	5.00	6.70	7.40	11.80
DF14A- 6P-1.25H(25)	CL538-0037-4-25	6	12.45	6.25	7.95	8.65	13.05
DF14A- 7P-1.25H(25)	CL538-0038-7-25	7	13.70	7.50	9.20	9.90	14.30
DF14A- 8P-1.25H(25)	CL538-0039-0-25	8	14.95	8.75	10.45	11.15	15.55
DF14A- 9P-1.25H(25)	CL538-0040-9-25	9	16.20	10.00	11.70	12.40	16.80
DF14A-10P-1.25H(25)	CL538-0041-1-25	10	17.45	11.25	12.95	13.65	18.05
DF14A-15P-1.25H(25)	CL538-0114-3-25	15	23.70	17.50	19.20	19.90	24.30
DF14A-20P-1.25H(25)	CL538-0119-7-25	20	29.95	23.75	25.45	26.15	30.55
DF14A-25P-1.25H(25)	CL538-0124-7-25	25	36.20	30.00	31.70	32.40	36.80
DF14A-30P-1.25H(25)	CL538-0045-2-25	30	42.45	36.25	37.95	38.65	43.05

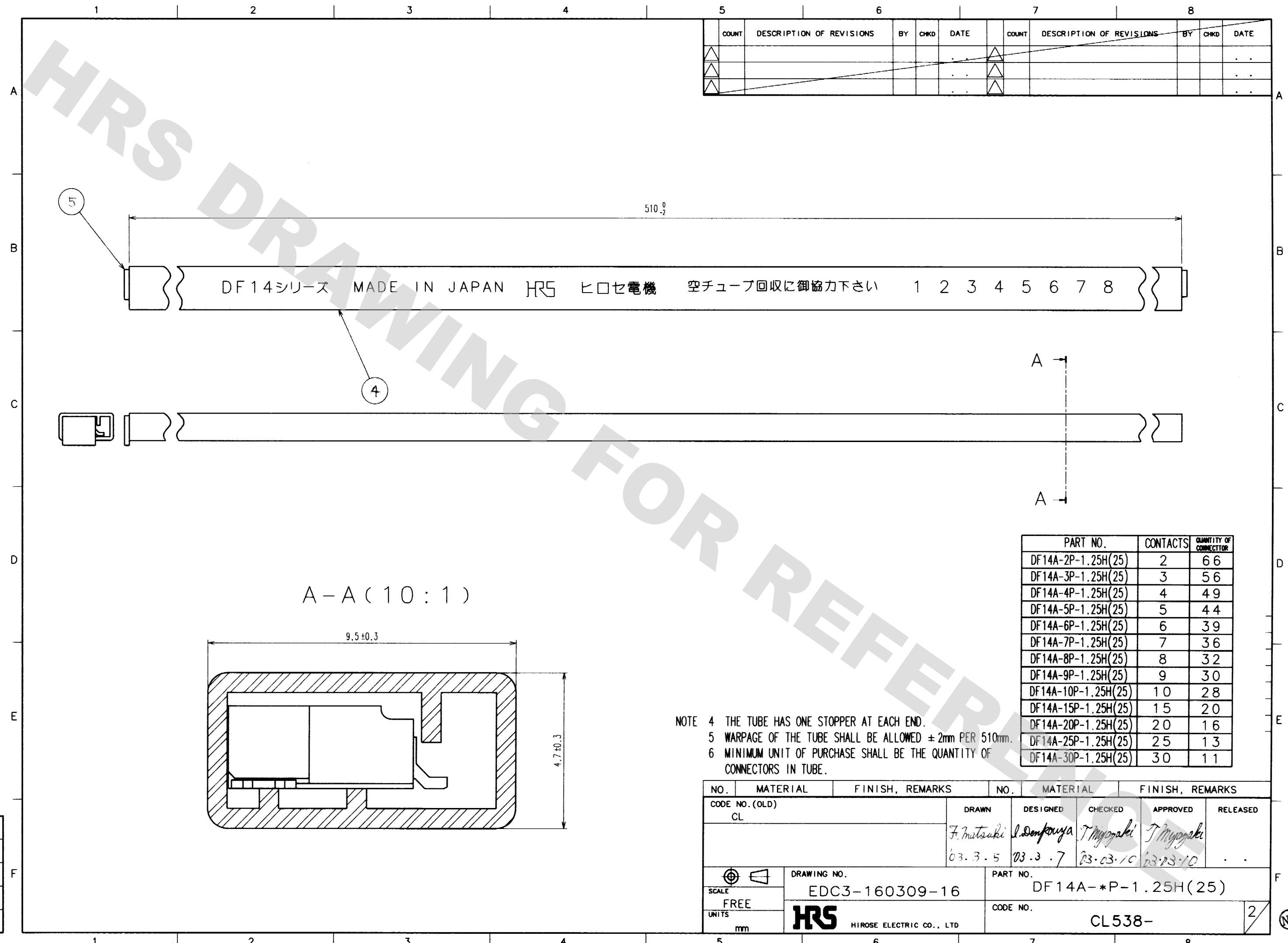
RECOMMENDED PATTERN

NOTE 1. LEAD CO-PLANALITY INCLUDE REINFORCED METAL FITTINGS SHALL BE 0.1 MAX.
 2. WHEN THIS CONNECTOR MATES WITH DF14-*S-1.25C, THE MATTING LENGTH IS 7.3mm.
 3. FOR CONNECTORS, 2 OR 3 CONTACTS, SIMPLIFIED LOCK HOLE SHALL BE SET AT THE CENTER OF HOUSING.

3	PHOSPHOR BRONZE	TIN-COPPER PLATED 1μ m min UNDER PLATING: NICKEL PLATED 0.5μ m min	5	S.PVC		
2	BRASS	TIN-COPPER PLATED 1μ m min UNDER PLATING: NICKEL PLATED 0.5μ m min	4	RIGID VINYLCHLORIDE	ELECTROSTATIC PROTECTION	
1	POLYAMIDE	BEIGE, UL94V-0				
NO.	MATERIAL	FINISH, REMARKS	NO.	MATERIAL	FINISH, REMARKS	
CODE NO. (OLD) CL		DRAWN	DESIGNED	CHECKED	APPROVED	RELEASED
		F. MITSUKI	I. DONPOUYA	T. MIYAZAKI	T. MIYAZAKI	
		03.3.5	03.3.7	03.03.10	03.03.10	
DRAWING NO. EDC3-160309-16			PART NO. DF14A-*P-1.25H(25)			
SCALE 5 : 1			CODE NO. CL538-			
UNITS mm			HRS HIROSE ELECTRIC CO., LTD			
			1/2			

(NC)

REVISIONS				REVISIONS					
COUNT	DESCRIPTION OF REVISIONS	BY	CHKD	DATE	COUNT	DESCRIPTION OF REVISIONS	BY	CHKD	DATE
△					△				
△					△				
△					△				



DF14シリーズ MADE IN JAPAN HRS ヒロセ電機 空チューブ回収に御協力下さい 1 2 3 4 5 6 7 8

A-A (10:1)

PART NO.	CONTACTS	QUANTITY OF CONNECTOR
DF14A-2P-1.25H(25)	2	66
DF14A-3P-1.25H(25)	3	56
DF14A-4P-1.25H(25)	4	49
DF14A-5P-1.25H(25)	5	44
DF14A-6P-1.25H(25)	6	39
DF14A-7P-1.25H(25)	7	36
DF14A-8P-1.25H(25)	8	32
DF14A-9P-1.25H(25)	9	30
DF14A-10P-1.25H(25)	10	28
DF14A-15P-1.25H(25)	15	20
DF14A-20P-1.25H(25)	20	16
DF14A-25P-1.25H(25)	25	13
DF14A-30P-1.25H(25)	30	11

NOTE 4 THE TUBE HAS ONE STOPPER AT EACH END.
 5 WARPAGE OF THE TUBE SHALL BE ALLOWED ±2mm PER 510mm.
 6 MINIMUM UNIT OF PURCHASE SHALL BE THE QUANTITY OF CONNECTORS IN TUBE.

NO.	MATERIAL	FINISH, REMARKS	NO.	MATERIAL	FINISH, REMARKS		
CODE NO. (OLD) CL			DRAWN	DESIGNED	CHECKED	APPROVED	RELEASED
			F. Matsuki	I. Denpouya	T. Miyazaki	T. Miyazaki	
			03.3.5	03.3.7	03.03.10	03.03.10	
SCALE FREE	DRAWING NO. EDC3-160309-16		PART NO. DF14A-*P-1.25H(25)				
UNITS mm	HRS HIROSE ELECTRIC CO., LTD		CODE NO. CL538-		2		

DRAWING FOR REFERENCE: This is subject to change without notice
08/11/2012

TO

NC

X-ON Electronics

Largest Supplier of Electrical and Electronic Components

Click to view similar products for [Headers & Wire Housings](#) category:

Click to view products by [Hirose](#) manufacturer:

Other Similar products are found below :

[892-18-020-10-001101](#) [58102-G61-06LF](#) [582553-1](#) [0009485154](#) [009176003701906](#) [0050291907](#) [LY20-4P-DT1-P1E-BR](#) [02.125.8002.8](#)
[609-3404](#) [61062-3](#) [622-0430](#) [622-3653LF](#) [63453-116](#) [636-1030](#) [636-1427](#) [636-3427](#) [636-4007](#) [641938-9](#) [641991-4](#) [644827-2](#) [65817-010LF](#)
[65817-015LF](#) [65863-015LF](#) [66207-023LF](#) [67095-007LF](#) [67601157](#) [68648-049](#) [70.362.1628.0](#) [70-4210](#) [70-4226B](#) [70-4853B](#) [707-5020](#) [707-5028](#) [71.350.2428.0](#) [71918-208LF](#) [71961-016LF](#) [733-134](#) [733-162](#) [754199-000](#) [760-3052](#) [787-8014-00](#) [79531-3000](#) [FCN-360C032-B](#) [FCN-367T-T012/H](#) [FCN-723D010/2](#) [80.063.4001.1](#) [800-90-001-10-001000](#) [800-90-010-10-002000](#) [801-43-002-10-013000](#) [801-43-006-10-002000](#)