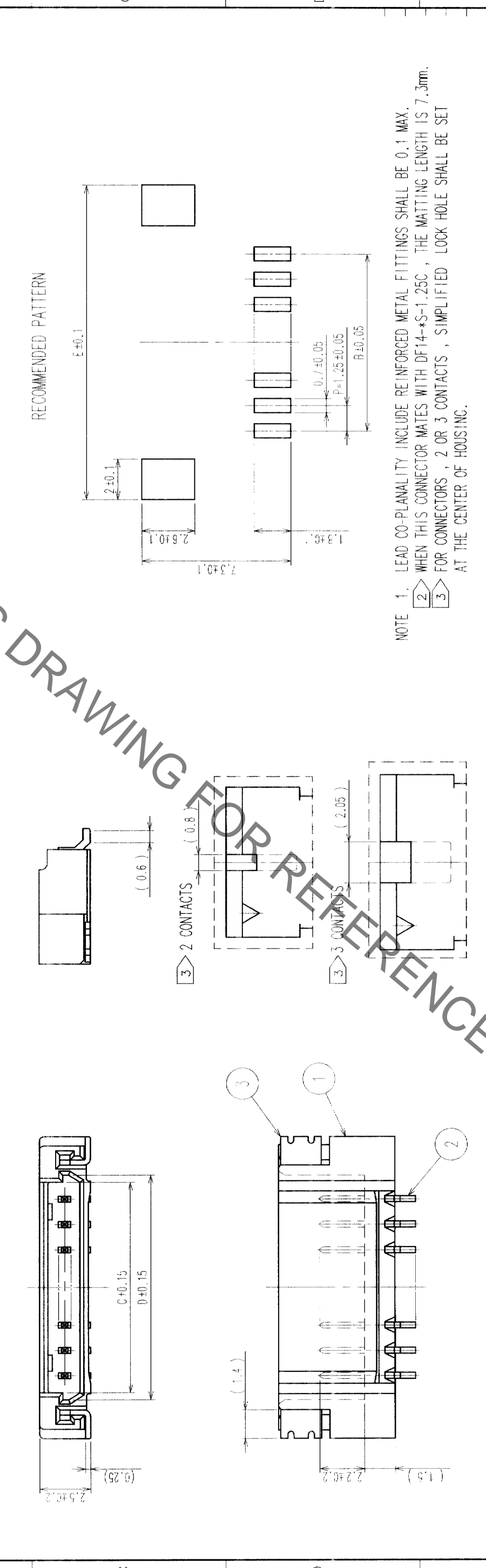
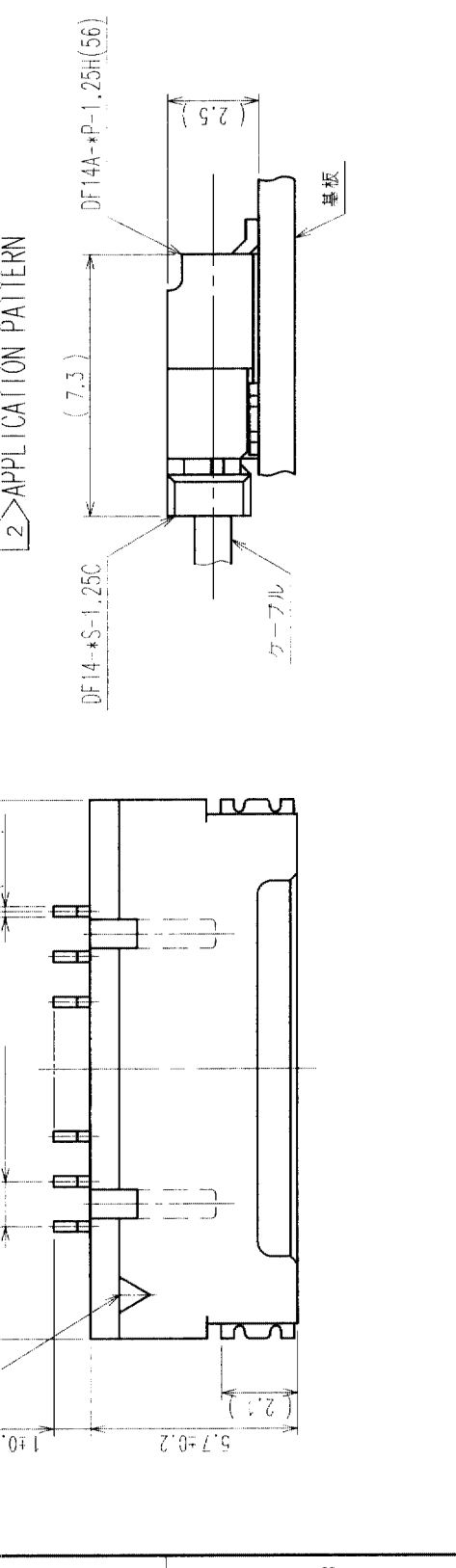


COUNT	DESCRIPTION OF REVISIONS	BY	CHKD	DATE	COUNT	DESCRIPTION OF REVISIONS	BY	CHKD	DATE

PART NO.	HRS NO.	CONTACTS	A	B	C	D	E
DF14A-2P-1.25H(56)	CL538-0033-3-56	2	7.45	1.25	2.95	3.65	8.05
DF14A-3P-1.25H(56)	CL538-0034-6-56	3	8.70	2.50	4.20	4.90	9.30
DF14A-4P-1.25H(56)	CL538-0035-9-56	4	9.95	3.75	5.45	6.15	10.55
DF14A-5P-1.25H(56)	CL538-0036-1-56	5	11.20	5.00	6.70	7.40	11.80
DF14A-6P-1.25H(56)	CL538-0037-4-56	6	12.45	6.25	7.95	8.65	13.05
DF14A-7P-1.25H(56)	CL538-0038-7-56	7	13.70	7.50	9.20	9.90	14.30
DF14A-8P-1.25H(56)	CL538-0039-0-56	8	14.95	8.75	10.45	11.15	15.55
DF14A-9P-1.25H(56)	CL538-0040-9-56	9	16.20	10.00	11.70	12.40	16.80
DF14A-10P-1.25H(56)	CL538-0041-1-56	10	17.45	11.25	12.95	13.65	18.05
DF14A-15P-1.25H(56)	CL538-0114-3-56	15	23.70	17.50	19.20	19.90	24.30
DF14A-20P-1.25H(56)	CL538-0119-7-56	20	29.95	23.75	25.45	26.15	30.55
DF14A-25P-1.25H(56)	CL538-0124-7-56	25	36.20	30.00	31.70	32.40	36.80
DF14A-30P-1.25H(56)	CL538-0045-2-56	30	42.45	36.25	37.95	38.65	43.05



NOTE 1. LEAD CO-PLANALITY INCLUDE REINFORCED METAL FITTINGS SHALL BE 0.1 MAX.  
 2. WHEN THIS CONNECTOR MATES WITH DF14-S-1.25C, THE MATTING LENGTH IS 7.3mm.  
 3. FOR CONNECTORS, 2 OR 3 CONTACTS, SIMPLIFIED LOCK HOLE SHALL BE SET AT THE CENTER OF HOUSING.

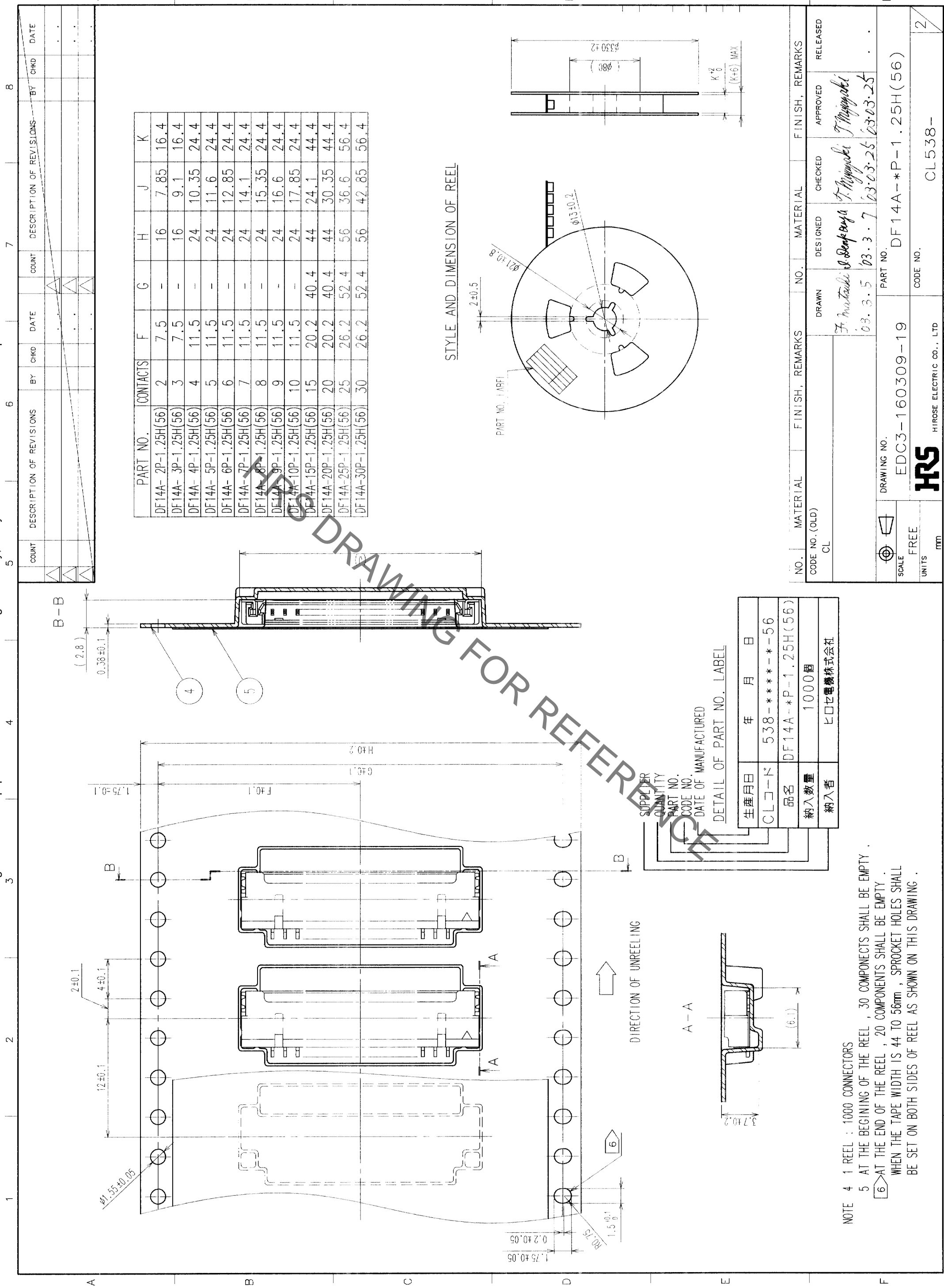
NO.	MATERIAL	FINISH, REMARKS	NO.	MATERIAL	FINISH, REMARKS
2	BRASS	CONTACT AREA: GOLD PLATED 0.1µm min LEAD AREA: TIN-COPPER PLATED 1µm min	5	POLYESTER	CLEAR(COVER TAPE)
1	POLYAMIDE	UNDER PLATING: NICKEL PLATED 1µm min BEIGE, UL94V-0	4	A-PET	CLEAR (EMBOSSED CARRIER TAPE)
			3	PHOSPHOR BRONZE	TIN-COPPER PLATED 1µm min UNDER PLATING: NICKEL PLATED 0.5µm min

CODE NO. (OLD)	DRAWN	DESIGNED	CHECKED	APPROVED	RELEASED
CL	F. Mitsuoka	I. Doronaga	T. Miyazaki	T. Miyazaki	
	03.3.5	03.3.17	03.03.25	03.03.25	

DRAWING NO.	PART NO.	CODE NO.
EDC3-160309-19	DF14A-*P-1.25H(56)	
SCALE 5:1		
UNITS mm		

TO	DATE	BY	CHKD	DATE

Sep.1.2019 Copyright 2019 HIROSE ELECTRIC CO., LTD. All Rights Reserved.  
In case of consideration for using Automotive equipment / device which demand high reliability, kindly contact our sales window correspondents.



STYLE AND DIMENSION OF REEL

PART NO.	CONTACTS	F	G	H	J	K
DF14A-2P-1.25H(56)	2	7.5	-	16	7.85	16.4
DF14A-3P-1.25H(56)	3	7.5	-	16	9.1	16.4
DF14A-4P-1.25H(56)	4	11.5	-	24	10.35	24.4
DF14A-5P-1.25H(56)	5	11.5	-	24	11.6	24.4
DF14A-6P-1.25H(56)	6	11.5	-	24	12.85	24.4
DF14A-7P-1.25H(56)	7	11.5	-	24	14.1	24.4
DF14A-8P-1.25H(56)	8	11.5	-	24	15.35	24.4
DF14A-9P-1.25H(56)	9	11.5	-	24	16.6	24.4
DF14A-10P-1.25H(56)	10	11.5	-	24	17.85	24.4
DF14A-15P-1.25H(56)	15	20.2	40.4	44	24.1	44.4
DF14A-20P-1.25H(56)	20	20.2	40.4	44	30.35	44.4
DF14A-25P-1.25H(56)	25	26.2	52.4	56	36.6	56.4
DF14A-30P-1.25H(56)	30	26.2	52.4	56	42.85	56.4

SUPPLIER  
QUANTITY  
PART NO.  
CODE NO.  
DATE OF MANUFACTURED

DETAIL OF PART NO. LABEL

生産月日	年	月	日
CLコード	538	-	-
品名	DF14A-P-1.25H(56)		
納入数量	1000個		
納入者	ヒロセ電機株式会社		

NOTE 4 1 REEL : 1000 CONNECTORS  
5 AT THE BEGINNING OF THE REEL , 30 COMPONENTS SHALL BE EMPTY .  
6 AT THE END OF THE REEL , 20 COMPONENTS SHALL BE EMPTY .  
WHEN THE TAPE WIDTH IS 44 TO 56mm , SPROCKET HOLES SHALL BE SET ON BOTH SIDES OF REEL AS SHOWN ON THIS DRAWING .

NO.	MATERIAL	FINISH, REMARKS	NO.	MATERIAL	FINISH, REMARKS
CODE NO. (OLD) CL			DRAWN F. Mustaki	CHECKED T. Miyajima	APPROVED T. Miyajima
SCALE FREE			DESIGNED 03.3.5		RELEASED
UNITS mm			DATE 03.3.7		
DRAWING NO. EDC3-160309-19			PART NO. DF14A-P-1.25H(56)		
CODE NO. (NEW) HRS			CODE NO. CL538-		

TO

## X-ON Electronics

Largest Supplier of Electrical and Electronic Components

*Click to view similar products for [Headers & Wire Housings](#) category:*

*Click to view products by [Hirose](#) manufacturer:*

Other Similar products are found below :

[892-18-020-10-001101](#) [58102-G61-06LF](#) [582553-1](#) [0009485154](#) [009176003701906](#) [0050291907](#) [LY20-4P-DT1-P1E-BR](#) [02.125.8002.8](#)  
[609-3404](#) [61062-3](#) [622-0430](#) [622-3653LF](#) [63453-116](#) [636-1030](#) [636-1427](#) [636-3427](#) [636-4007](#) [641938-9](#) [641991-4](#) [644827-2](#) [65817-010LF](#)  
[65817-015LF](#) [65863-015LF](#) [66207-023LF](#) [67095-007LF](#) [67601157](#) [68648-049](#) [70.362.1628.0](#) [70-4210](#) [70-4226B](#) [70-4853B](#) [707-5020](#) [707-5028](#) [71.350.2428.0](#) [71918-208LF](#) [71961-016LF](#) [733-134](#) [733-162](#) [754199-000](#) [760-3052](#) [787-8014-00](#) [79531-3000](#) [FCN-360C032-B](#) [FCN-367T-T012/H](#) [FCN-723D010/2](#) [80.063.4001.1](#) [800-90-001-10-001000](#) [800-90-010-10-002000](#) [801-43-002-10-013000](#) [801-43-006-10-002000](#)