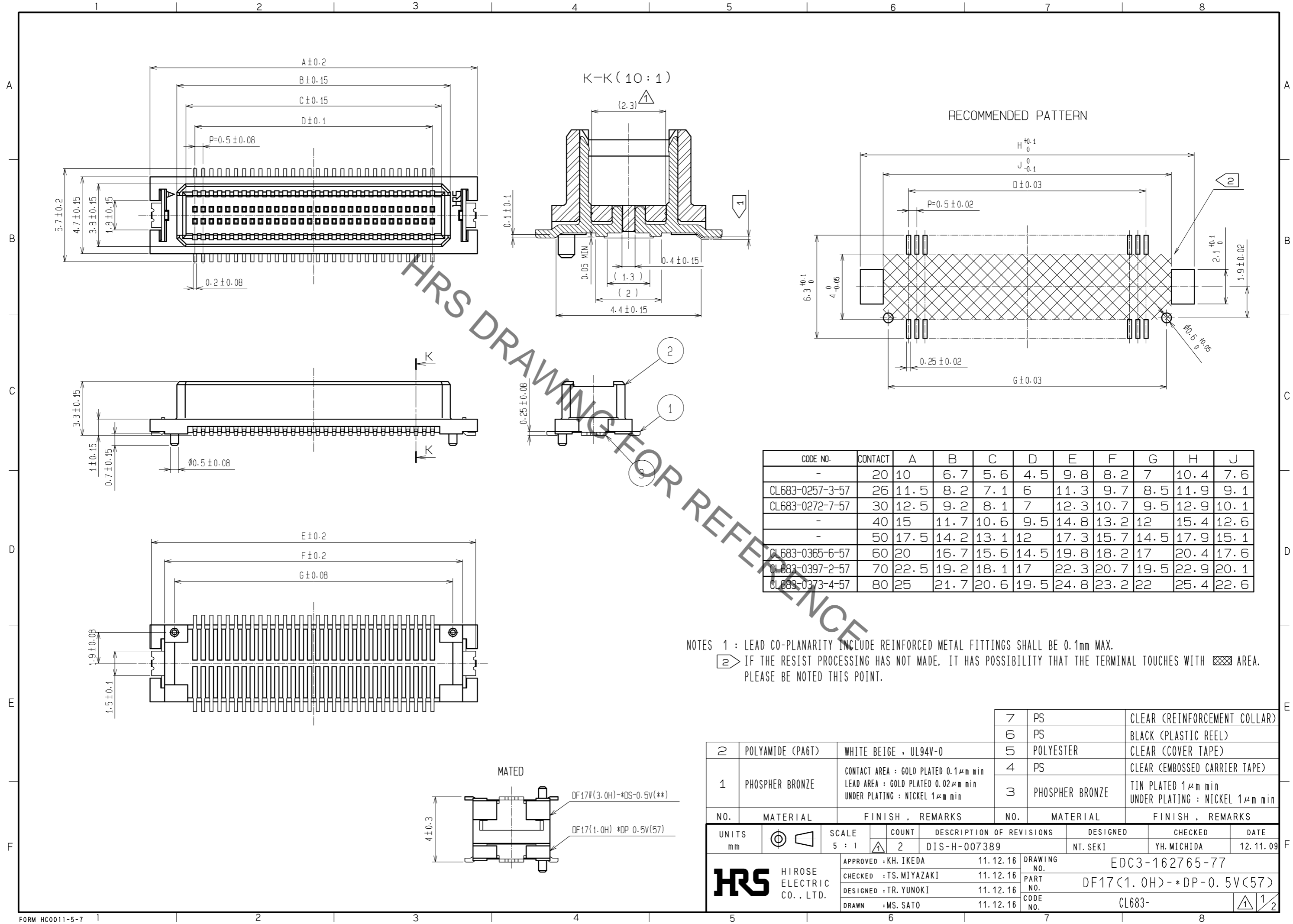


Aug.1.2021 Copyright 2021 HIROSE ELECTRIC CO., LTD. All Rights Reserved.
In case of consideration for using Automotive equipment / device which demand high reliability, kindly contact our sales window correspondents.



| CODE NO. | CONTACT | A | B | C | D | E | F | G | H | J |
|-----------------|---------|------|------|------|------|------|------|------|------|------|
| - | 20 | 10 | 6.7 | 5.6 | 4.5 | 9.8 | 8.2 | 7 | 10.4 | 7.6 |
| CL683-0257-3-57 | 26 | 11.5 | 8.2 | 7.1 | 6 | 11.3 | 9.7 | 8.5 | 11.9 | 9.1 |
| CL683-0272-7-57 | 30 | 12.5 | 9.2 | 8.1 | 7 | 12.3 | 10.7 | 9.5 | 12.9 | 10.1 |
| - | 40 | 15 | 11.7 | 10.6 | 9.5 | 14.8 | 13.2 | 12 | 15.4 | 12.6 |
| - | 50 | 17.5 | 14.2 | 13.1 | 12 | 17.3 | 15.7 | 14.5 | 17.9 | 15.1 |
| CL683-0365-6-57 | 60 | 20 | 16.7 | 15.6 | 14.5 | 19.8 | 18.2 | 17 | 20.4 | 17.6 |
| CL683-0397-2-57 | 70 | 22.5 | 19.2 | 18.1 | 17 | 22.3 | 20.7 | 19.5 | 22.9 | 20.1 |
| CL683-0373-4-57 | 80 | 25 | 21.7 | 20.6 | 19.5 | 24.8 | 23.2 | 22 | 25.4 | 22.6 |

NOTES 1 : LEAD CO-PLANARITY INCLUDE REINFORCED METAL FITTINGS SHALL BE 0.1mm MAX.
 2 IF THE RESIST PROCESSING HAS NOT MADE, IT HAS POSSIBILITY THAT THE TERMINAL TOUCHES WITH AREA. PLEASE BE NOTED THIS POINT.

| NO. | MATERIAL | FINISH . REMARKS | NO. | MATERIAL | FINISH . REMARKS |
|-----|------------------|--|-----|-----------------|--|
| 7 | PS | | 7 | PS | CLEAR (REINFORCEMENT COLLAR) |
| 6 | PS | | 6 | PS | BLACK (PLASTIC REEL) |
| 5 | POLYESTER | | 5 | POLYESTER | CLEAR (COVER TAPE) |
| 4 | PS | | 4 | PS | CLEAR (EMBOSSED CARRIER TAPE) |
| 3 | PHOSPHER BRONZE | TIN PLATED 1μm min UNDER PLATING : NICKEL 1μm min | 3 | PHOSPHER BRONZE | TIN PLATED 1μm min UNDER PLATING : NICKEL 1μm min |
| 2 | POLYAMIDE (PA6T) | WHITE BEIGE . UL94V-0 | | | |
| 1 | PHOSPHER BRONZE | CONTACT AREA : GOLD PLATED 0.1μm min LEAD AREA : GOLD PLATED 0.02μm min UNDER PLATING : NICKEL 1μm min | | | |

| UNITS | SCALE | COUNT | DESCRIPTION OF REVISIONS | DESIGNED | CHECKED | DATE |
|-------|-------|-------|--------------------------|----------|-------------|------------|
| mm | 5 : 1 | 2 | DIS-H-007389 | NT. SEKI | YH. MICHIDA | 12. 11. 09 |

| APPROVED | CHECKED | DESIGNED | DRAWN | DRAWING NO. | PART NO. | CODE NO. |
|-----------|--------------|------------|----------|----------------|-------------------------|----------|
| KH. IKEDA | TS. MIYAZAKI | TR. YUNOKI | MS. SATO | EDC3-162765-77 | DF17(1.0H)-*DP-0.5V(57) | CL683- |

X-ON Electronics

Largest Supplier of Electrical and Electronic Components

Click to view similar products for [Board to Board & Mezzanine Connectors](#) category:

Click to view products by [Hirose](#) manufacturer:

Other Similar products are found below :

[589158040000018](#) [MDF7C-18P-2.54DSA\(55\)](#) [FCN-230C068-11](#) [FCN-268F012-G/BD](#) [FCN-268F036-G/BD](#) [FCN-268M012-G/0D](#) [FCN-268M024-G/1D](#) [FCN-723J004/1](#) [MIS-048-01-F-D-DP-K](#) [832-10-034-10-001000](#) [FX4C-80S-1.27DSA](#) [FCN-214Q030-G/0](#) [FCN-234P048-G/0](#) [FCN-235D050-G/C](#) [210-93-314-41-105000](#) [2-22603-0](#) [MDF7-40DP-2.54DSA\(55\)](#) [AXG720047](#) [MIT-114-03-F-D-K](#) [55323-1519](#) [DF33-2P-3.3DSA\(24\)](#) [YFT-20-05-H-03-SB-K](#) [503308-3040](#) [026-6203-PDB](#) [027-6203-PDB](#) [069159702701000](#) [10123981-102LF](#) [101A10019X](#) [55650-0588-C](#) [68682-310LF](#) [68684-306](#) [75140-7012](#) [87471-650](#) [YTW-30-07-H-Q-410-140](#) [FCN-268F024-G0D](#) [10124054-515LF](#) [68685-603](#) [8-1616154-3](#) [MIS-019-01-F-D](#) [FCN-268M024-G/3D](#) [FCN-268M036-G/BD](#) [20021832-06016C1LF](#) [KX15-20KLDL-E1000E](#) [AXE810124](#) [FCN-214J100-G/0](#) [FCN-230C068-E/S](#) [AXE812124](#) [AXE816124](#) [AXE720127](#) [354184](#)