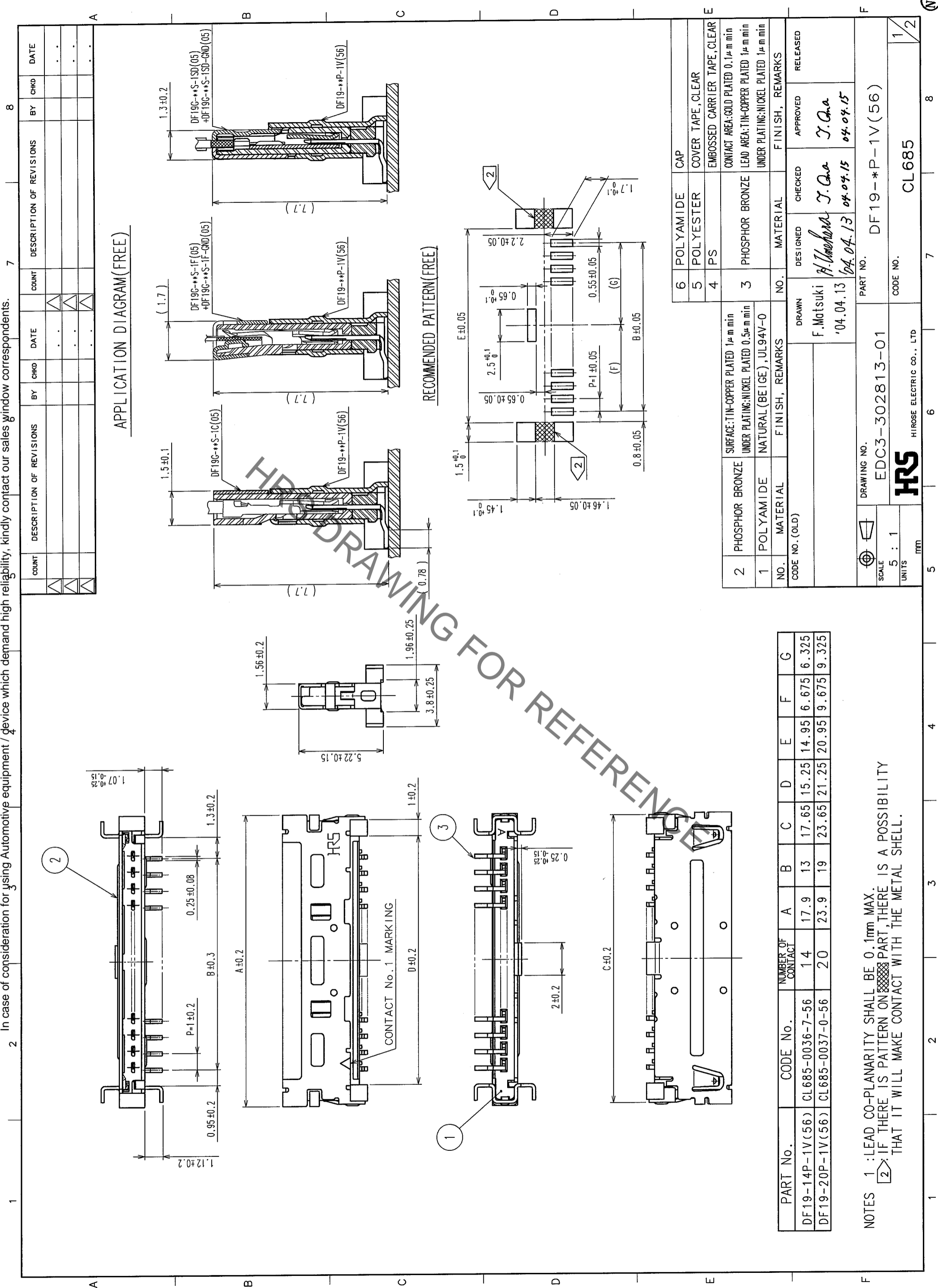


In case of consideration for using Automotive equipment / device which demand high reliability, kindly contact our sales window correspondents.



APPLICATION DIAGRAM(FREE)

RECOMMENDED PATTERN(FREE)

6	POLYAMIDE	CAP
5	POLYESTER	COVER TAPE, CLEAR
4	PS	EMBOSSED CARRIER TAPE, CLEAR
3	PHOSPHOR BRONZE	CONTACT AREA: GOLD PLATED 0.1μm min LEAD AREA: TIN-COPPER PLATED 1μm min UNDER PLATING: NICKEL PLATED 1μm min

NO.	MATERIAL	FINISH, REMARKS	NO.	MATERIAL	FINISH, REMARKS
2	PHOSPHOR BRONZE	SURFACE: TIN-COPPER PLATED 1μm min UNDER PLATING: NICKEL PLATED 0.5μm min	3	PHOSPHOR BRONZE	CONTACT AREA: GOLD PLATED 0.1μm min LEAD AREA: TIN-COPPER PLATED 1μm min UNDER PLATING: NICKEL PLATED 1μm min
1	POLYAMIDE	NATURAL (BEIGE), UL94V-0			

CODE NO. (OLD)		DRAWN	DESIGNED	CHECKED	APPROVED	RELEASED
		F. Matsuki	H. Imamura	J. Oka	J. Oka	
		'04.04.13	'04.04.13	'04.04.15	'04.04.15	

DRAWING NO.	EDC3-302813-01	PART NO.	DF19-P-1V(56)
SCALE	5 : 1	CODE NO.	CL685
UNITS	mm		

PART No.	CODE No.	NUMBER OF CONTACT	A	B	C	D	E	F	G
DF19-14P-1V(56)	CL685-0036-7-56	14	17.9	13	17.65	15.25	14.95	6.675	6.325
DF19-20P-1V(56)	CL685-0037-0-56	20	23.9	19	23.65	21.25	20.95	9.675	9.325

NOTES 1: LEAD CO-PLANARITY SHALL BE 0.1mm MAX.
2: IF THERE IS PATTERN ON CONTACT PART, THERE IS A POSSIBILITY THAT IT WILL MAKE CONTACT WITH THE METAL SHELL.

TO	
----	--

X-ON Electronics

Largest Supplier of Electrical and Electronic Components

Click to view similar products for [Headers & Wire Housings](#) category:

Click to view products by [Hirose](#) manufacturer:

Other Similar products are found below :

[892-18-020-10-001101](#) [58102-G61-06LF](#) [582553-1](#) [0009485154](#) [009176003701906](#) [0050291907](#) [LY20-4P-DT1-P1E-BR](#) [02.125.8002.8](#)
[609-3404](#) [61062-3](#) [622-0430](#) [622-3653LF](#) [63453-116](#) [636-1030](#) [636-1427](#) [636-3427](#) [636-4007](#) [641938-9](#) [641991-4](#) [644827-2](#) [65817-010LF](#)
[65817-015LF](#) [65863-015LF](#) [66207-023LF](#) [67095-007LF](#) [67601157](#) [68648-049](#) [70.362.1628.0](#) [70-4210](#) [70-4226B](#) [70-4853B](#) [707-5020](#) [707-](#)
[5028](#) [71.350.2428.0](#) [71918-208LF](#) [71961-016LF](#) [733-134](#) [733-162](#) [754199-000](#) [760-3052](#) [787-8014-00](#) [79531-3000](#) [FCN-360C032-B](#) [FCN-](#)
[367T-T012/H](#) [FCN-723D010/2](#) [80.063.4001.1](#) [800-90-001-10-001000](#) [800-90-010-10-002000](#) [801-43-002-10-013000](#) [801-43-006-10-002000](#)