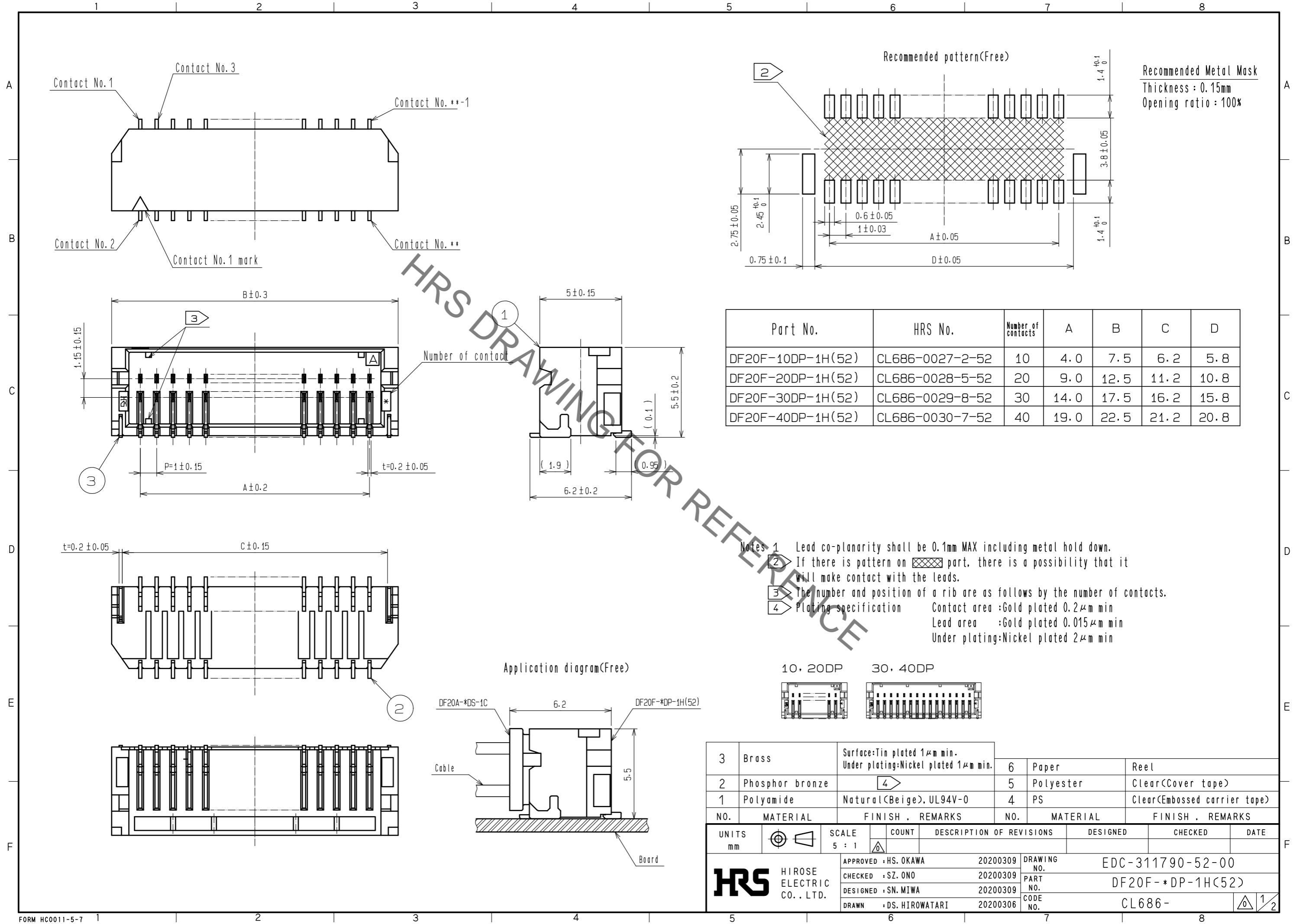
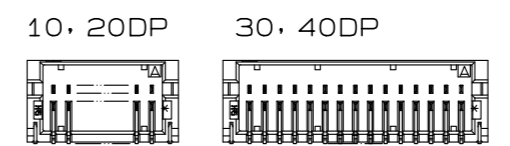


Jan.1.2022 Copyright 2022 HIROSE ELECTRIC CO., LTD. All Rights Reserved.
 In case of consideration for using Automotive equipment / device which demand high reliability, kindly contact our sales window correspondents.



Part No.	HRS No.	Number of contacts	A	B	C	D
DF20F-10DP-1H(52)	CL686-0027-2-52	10	4.0	7.5	6.2	5.8
DF20F-20DP-1H(52)	CL686-0028-5-52	20	9.0	12.5	11.2	10.8
DF20F-30DP-1H(52)	CL686-0029-8-52	30	14.0	17.5	16.2	15.8
DF20F-40DP-1H(52)	CL686-0030-7-52	40	19.0	22.5	21.2	20.8

- Notes
- 1 Lead co-planarity shall be 0.1mm MAX including metal hold down.
 - 2 If there is pattern on part, there is a possibility that it will make contact with the leads.
 - 3 The number and position of a rib are as follows by the number of contacts.
 - 4 Plating specification
 Contact area : Gold plated 0.2μm min
 Lead area : Gold plated 0.015μm min
 Under plating: Nickel plated 2μm min

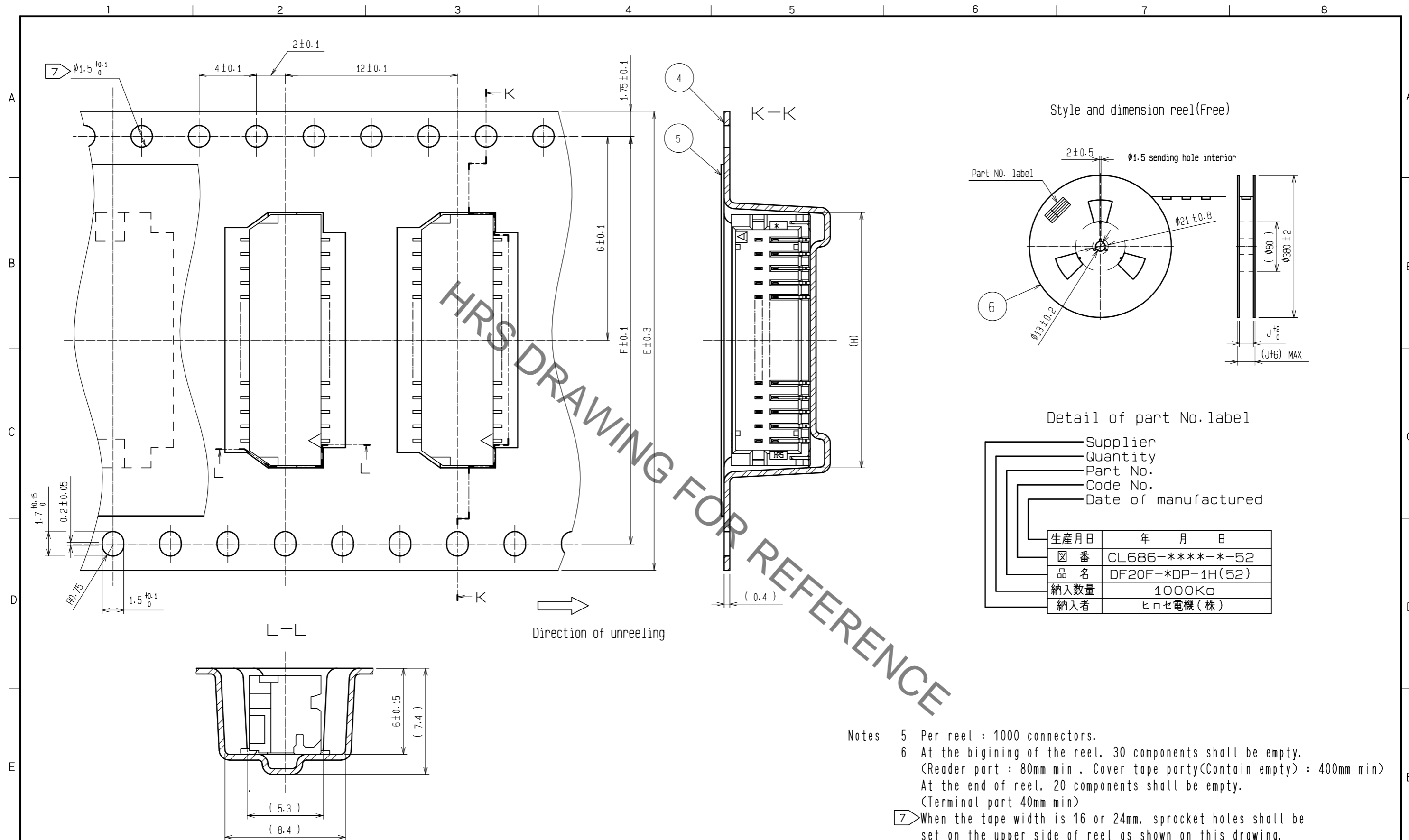


NO.	MATERIAL	FINISH . REMARKS	NO.	MATERIAL	FINISH . REMARKS
3	Brass	Surface: Tin plated 1μm min. Under plating: Nickel plated 1μm min.	6	Paper	Reel
2	Phosphor bronze		5	Polyester	Clear(Cover tape)
1	Polyamide	Natural(Beige), UL94V-0	4	PS	Clear(Embossed carrier tape)

UNITS	SCALE	COUNT	DESCRIPTION OF REVISIONS	DESIGNED	CHECKED	DATE
mm	5 : 1					

HRS HIROSE ELECTRIC CO., LTD.	APPROVED : HS. OKAWA	20200309	DRAWING NO.	EDC-311790-52-00
	CHECKED : SZ. ONO	20200309	PART NO.	DF20F-*DP-1H(52)
	DESIGNED : SN. MIWA	20200309	CODE NO.	CL686-
	DRAWN : DS. HIROWATARI	20200306		

Jan.1.2022 Copyright 2022 HIROSE ELECTRIC CO., LTD. All Rights Reserved.
In case of consideration for using Automotive equipment / device which demand high reliability, kindly contact our sales window correspondents.



HRS DRAWING FOR REFERENCE

- Notes
- 5 Per reel : 1000 connectors.
 - 6 At the beginning of the reel, 30 components shall be empty.
(Reader part : 80mm min. Cover tape party(Contain empty) : 400mm min)
At the end of reel, 20 components shall be empty.
(Terminal part 40mm min)
 - 7 When the tape width is 16 or 24mm, sprocket holes shall be set on the upper side of reel as shown on this drawing.

Part No.	HRS No.	Number of contacts	E	F	G	H	J
DF20F-10DP-1H(52)	CL686-0027-2-52	10	16	-	7.5	7.8	16.4
DF20F-20DP-1H(52)	CL686-0028-5-52	20	24	-	11.5	12.8	24.4
DF20F-30DP-1H(52)	CL686-0029-8-52	30	32	28.4	14.2	17.8	32.4
DF20F-40DP-1H(52)	CL686-0030-7-52	40	44	40.4	20.2	22.8	44.4

HRS	DRAWING NO.	EDC-311790-52-00
	PART NO.	DF20F-*DP-1H(52)
	CODE NO.	CL686-
		2/2

X-ON Electronics

Largest Supplier of Electrical and Electronic Components

Click to view similar products for [Headers & Wire Housings](#) category:

Click to view products by [Hirose](#) manufacturer:

Other Similar products are found below :

[892-18-020-10-001101](#) [58102-G61-06LF](#) [582553-1](#) [0009485154](#) [009176003701906](#) [0050291907](#) [LY20-4P-DT1-P1E-BR](#) [02.125.8002.8](#)
[609-3404](#) [61062-3](#) [622-0430](#) [622-3653LF](#) [63453-116](#) [636-1030](#) [636-1427](#) [636-3427](#) [636-4007](#) [641938-9](#) [641991-4](#) [644827-2](#) [65817-010LF](#)
[65817-015LF](#) [65863-015LF](#) [66207-023LF](#) [67095-007LF](#) [67601157](#) [68648-049](#) [70.362.1628.0](#) [70-4210](#) [70-4226B](#) [70-4853B](#) [707-5020](#) [707-](#)
[5028](#) [71.350.2428.0](#) [71918-208LF](#) [71961-016LF](#) [733-134](#) [733-162](#) [754199-000](#) [760-3052](#) [787-8014-00](#) [79531-3000](#) [FCN-360C032-B](#) [FCN-](#)
[367T-T012/H](#) [FCN-723D010/2](#) [80.063.4001.1](#) [800-90-001-10-001000](#) [800-90-010-10-002000](#) [801-43-002-10-013000](#) [801-43-006-10-002000](#)