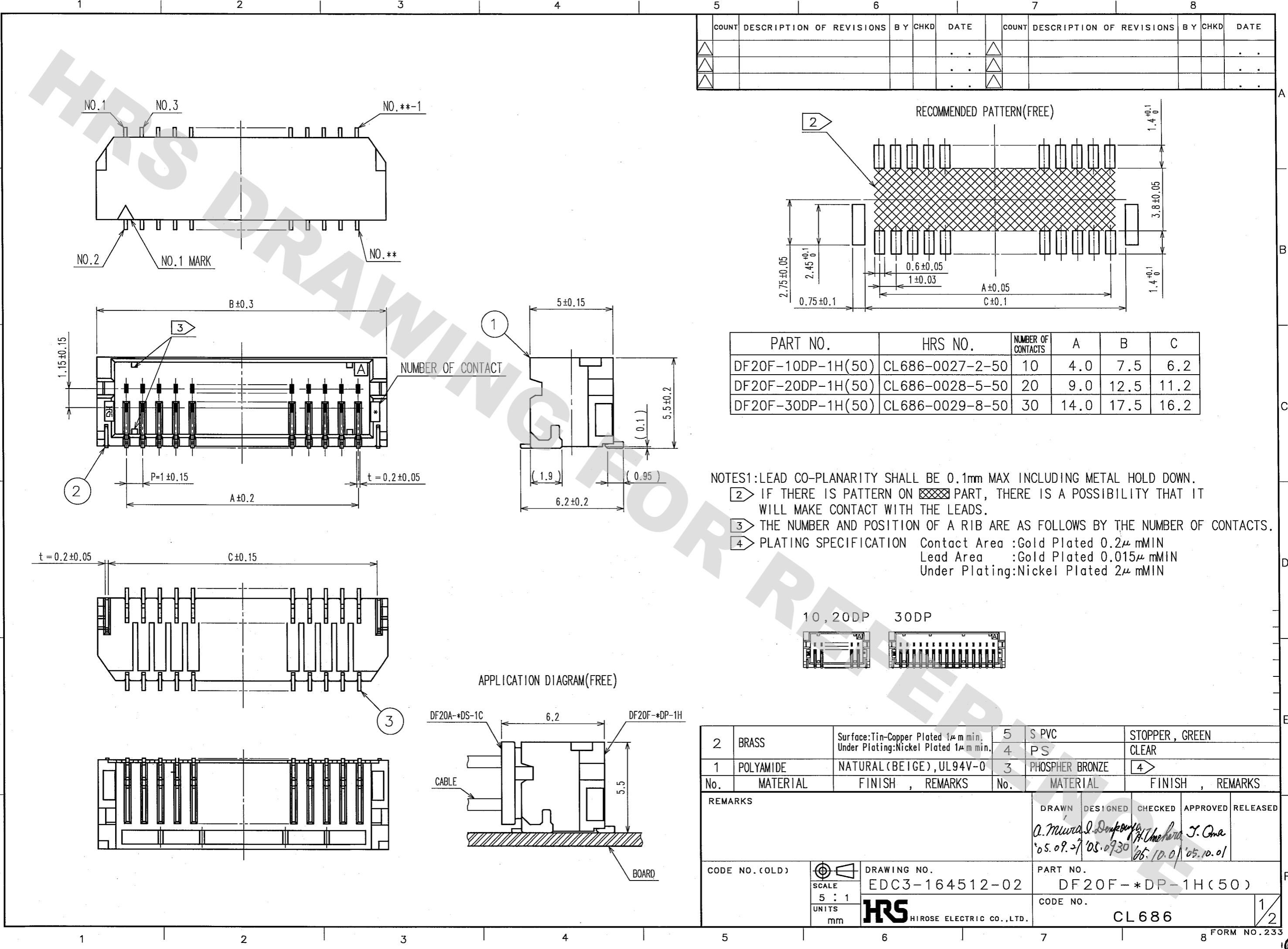


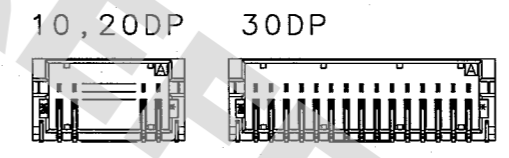
DRAWING FOR REFERENCE: This is subject to change without notice
08/11/2012



COUNT	DESCRIPTION OF REVISIONS	BY	CHKD	DATE	COUNT	DESCRIPTION OF REVISIONS	BY	CHKD	DATE

PART NO.	HRS NO.	NUMBER OF CONTACTS	A	B	C
DF20F-10DP-1H(50)	CL686-0027-2-50	10	4.0	7.5	6.2
DF20F-20DP-1H(50)	CL686-0028-5-50	20	9.0	12.5	11.2
DF20F-30DP-1H(50)	CL686-0029-8-50	30	14.0	17.5	16.2

NOTES:
 1: LEAD CO-PLANARITY SHALL BE 0.1mm MAX INCLUDING METAL HOLD DOWN.
 2: IF THERE IS PATTERN ON PART, THERE IS A POSSIBILITY THAT IT WILL MAKE CONTACT WITH THE LEADS.
 3: THE NUMBER AND POSITION OF A RIB ARE AS FOLLOWS BY THE NUMBER OF CONTACTS.
 4: PLATING SPECIFICATION
 Contact Area : Gold Plated 0.2μ mMIN
 Lead Area : Gold Plated 0.015μ mMIN
 Under Plating: Nickel Plated 2μ mMIN



No.	MATERIAL	FINISH , REMARKS	No.	MATERIAL	FINISH , REMARKS
2	BRASS	Surface: Tin-Copper Plated 1μ m min. Under Plating: Nickel Plated 1μ m min.	5	S PVC	STOPPER , GREEN
1	POLYAMIDE	NATURAL (BEIGE), UL94V-0	4	PS	CLEAR
			3	PHOSPHER BRONZE	4

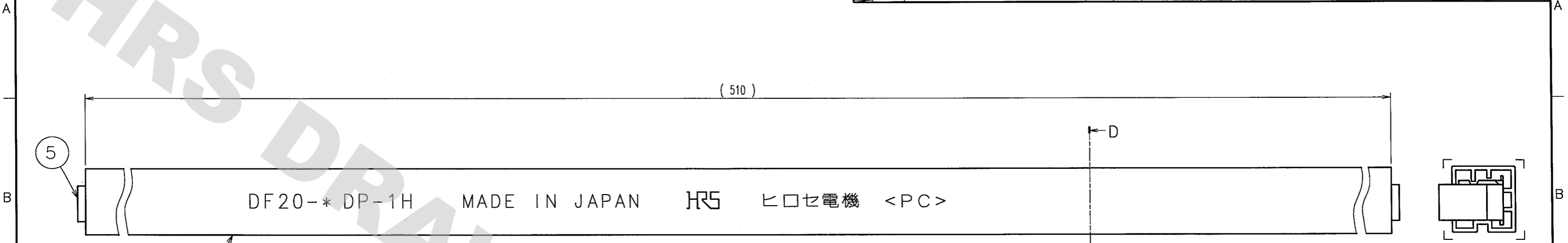
REMARKS				
DRAWN	DESIGNED	CHECKED	APPROVED	RELEASED
<i>A. Mura</i>	<i>J. Doyama</i>	<i>H. Umehara</i>	<i>J. Ono</i>	
05.09.27	05.09.30	05.10.01	05.10.01	

CODE NO. (OLD)	SCALE 5 : 1 UNITS mm	DRAWING NO. EDC3-164512-02	PART NO. DF20F-*DP-1H(50)
		HIROSE ELECTRIC CO., LTD.	CODE NO. CL686

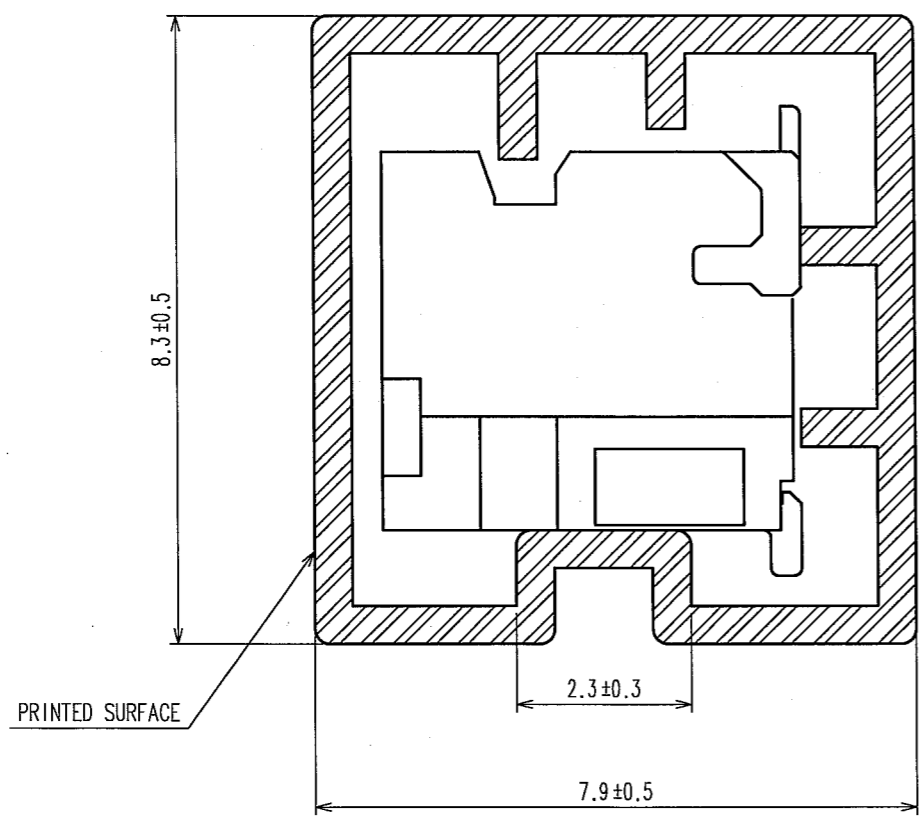
TO

DRAWING FOR REFERENCE: This is subject to change without notice
08/11/2012

5				6				7				8			
COUNT	DESCRIPTION OF REVISIONS	BY	CHKD	DATE	COUNT	DESCRIPTION OF REVISIONS	BY	CHKD	DATE	COUNT	DESCRIPTION OF REVISIONS	BY	CHKD	DATE	
△					△					△					
△					△					△					
△					△					△					



D-D (10:1)



NOTES:
5: NUMBER OF CONNECTERS PER A MAGAZINE CASE SHALL BE IN ACCORDANCE WITH THE LIST.
6: THESE CONNECTERS SHALL BE ON SALED IN ACCORDANCE WITH THE MULTIPLE QUANTITY ON THE LIST.

CODE NO.	PART NO.	NUMBER OF CONNECTORS
CL686-0027-2-50	DF20F-10DP-1H(50)	64
CL686-0028-5-50	DF20F-20DP-1H(50)	38
CL686-0029-8-50	DF20F-30DP-1H(50)	27

TO

REMARKS	SCALE	DRAWING NO.	DRAWN	DESIGNED	CHECKED	APPROVED	RELEASED
	FREE	EDC3-164512-02	<i>A. Murakami</i>	<i>Denpou</i>	<i>H. Uehara</i>	<i>J. Ome</i>	
CODE NO. (OLD)	UNITS	DRAWING NO.	PART NO.		PART NO.		
	mm	HRS HIROSE ELECTRIC CO., LTD.	DF20F-*DP-1H(50)		DF20F-*DP-1H(50)		
			CODE NO.		CODE NO.		
			CL686		CL686		

X-ON Electronics

Largest Supplier of Electrical and Electronic Components

Click to view similar products for [Headers & Wire Housings](#) category:

Click to view products by [Hirose](#) manufacturer:

Other Similar products are found below :

[892-18-020-10-001101](#) [58102-G61-06LF](#) [582553-1](#) [0009485154](#) [009176003701906](#) [0050291907](#) [LY20-4P-DT1-P1E-BR](#) [02.125.8002.8](#)
[609-3404](#) [61062-3](#) [622-0430](#) [622-3653LF](#) [63453-116](#) [636-1030](#) [636-1427](#) [636-3427](#) [636-4007](#) [641938-9](#) [641991-4](#) [644827-2](#) [65817-010LF](#)
[65817-015LF](#) [65863-015LF](#) [66207-023LF](#) [67095-007LF](#) [67601157](#) [68648-049](#) [70.362.1628.0](#) [70-4210](#) [70-4226B](#) [70-4853B](#) [707-5020](#) [707-5028](#) [71.350.2428.0](#) [71918-208LF](#) [71961-016LF](#) [733-134](#) [733-162](#) [754199-000](#) [760-3052](#) [787-8014-00](#) [79531-3000](#) [FCN-360C032-B](#) [FCN-367T-T012/H](#) [FCN-723D010/2](#) [80.063.4001.1](#) [800-90-001-10-001000](#) [800-90-010-10-002000](#) [801-43-002-10-013000](#) [801-43-006-10-002000](#)