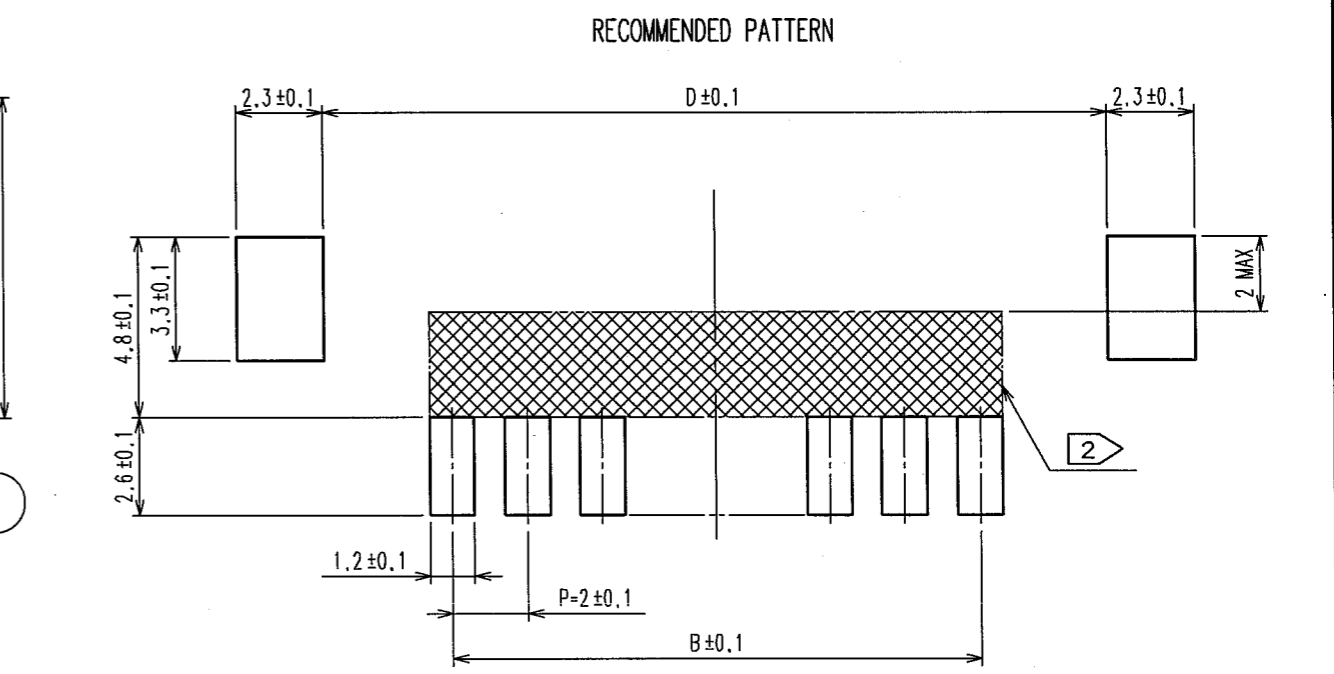
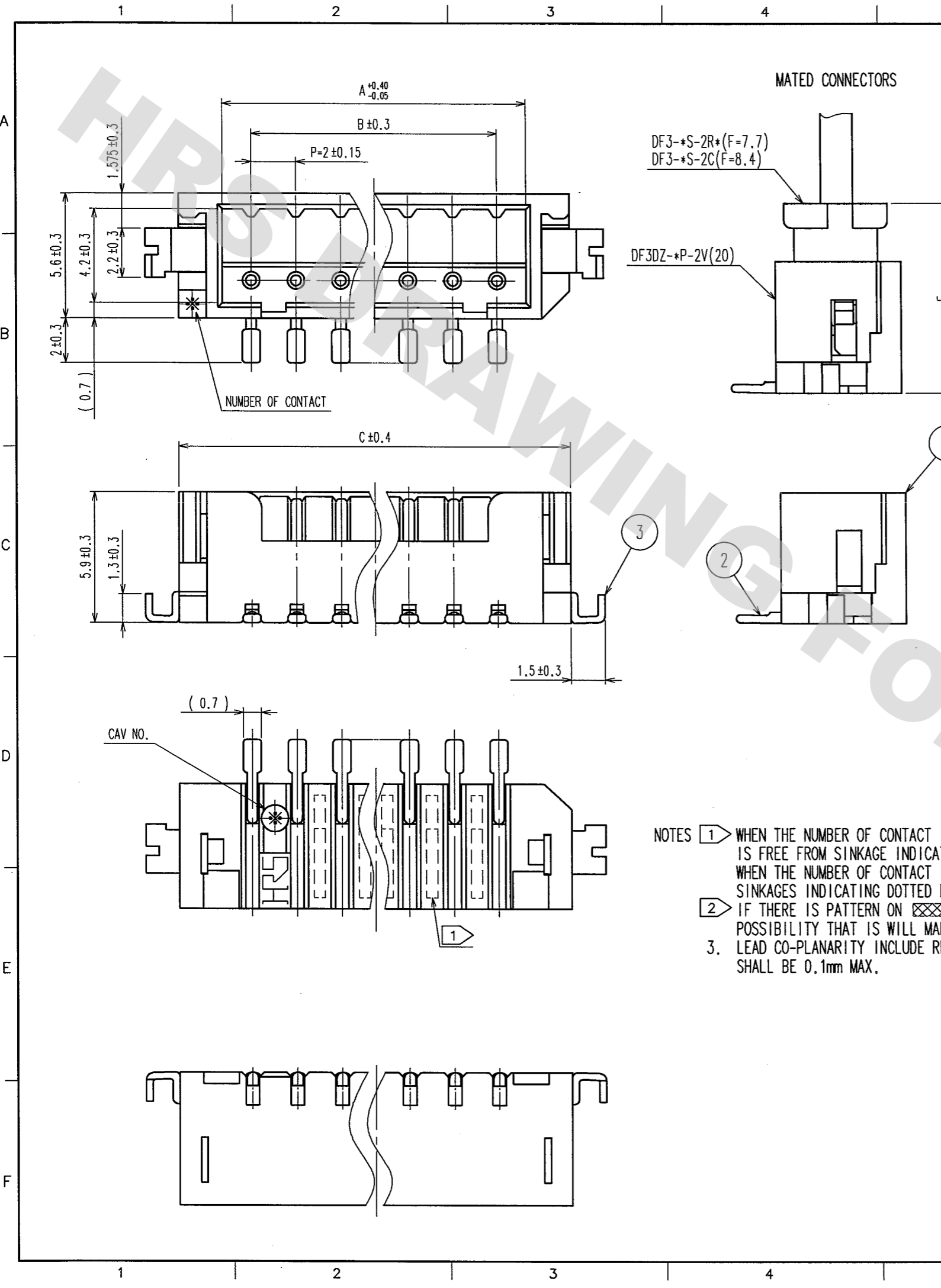


DRAWING FOR REFERENCE: This is subject to change without notice
08/11/2012

TO

COUNT	DESCRIPTION OF REVISIONS	BY	CHKD	DATE	COUNT	DESCRIPTION OF REVISIONS	BY	CHKD	DATE
2	RE-H-06617	I.D	T.M	04.11.27					



PART No.	CODE No.	A	B	C	D
DF3DZ- 2P-2V(20)	CL543-1056-0-20	4.6	2.0	8.5	8.74
DF3DZ- 3P-2V(20)	CL543-1057-2-20	6.6	4.0	10.5	10.74
DF3DZ- 4P-2V(20)	CL543-1058-5-20	8.6	6.0	12.5	12.74
DF3DZ- 5P-2V(20)	CL543-1059-8-20	10.6	8.0	14.5	14.74
DF3DZ- 6P-2V(20)	CL543-1060-7-20	12.6	10.0	16.5	16.74
DF3DZ- 7P-2V(20)	CL543-1061-0-20	14.6	12.0	18.5	18.74
DF3DZ- 8P-2V(20)	CL543-1062-2-20	16.6	14.0	20.5	20.74
DF3DZ- 9P-2V(20)	CL543-1063-5-20	18.6	16.0	22.5	22.74
DF3DZ-10P-2V(20)	CL543-1064-8-20	20.6	18.0	24.5	24.74
DF3DZ-11P-2V(20)	CL543-1065-0-20	22.6	20.0	26.5	26.74
DF3DZ-12P-2V(20)	CL543-1066-3-20	24.6	22.0	28.5	28.74
DF3DZ-13P-2V(20)	CL543-1067-6-20	26.6	24.0	30.5	30.74
DF3DZ-14P-2V(20)	CL543-1068-9-20	28.6	26.0	32.5	32.74
DF3DZ-15P-2V(20)	CL543-1069-1-20	30.6	28.0	34.5	34.74

- NOTES
- 1 WHEN THE NUMBER OF CONTACT IS 2 TO 10, THIS PART IS FREE FROM SINKAGE INDICATING DOTTED LINES. WHEN THE NUMBER OF CONTACT IS 11 TO 15, THERE ARE SINKAGES INDICATING DOTTED LINES.
 - 2 IF THERE IS PATTERN ON PART, THERE IS A POSSIBILITY THAT IT WILL MAKE CONTACT WITH THE LEADS.
 3. LEAD CO-PLANARITY INCLUDE REINFORCED METAL FITTINGS SHALL BE 0.1mm MAX.

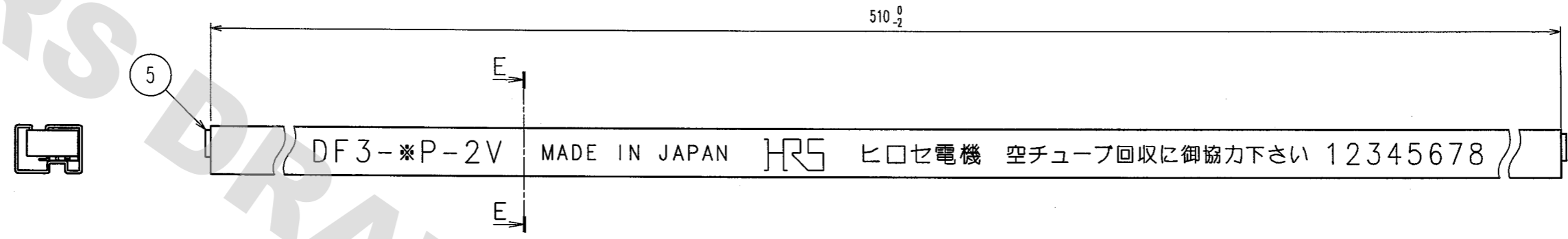
2	BRASS	SURFACE:TIN PLATED 1μm min (UNDER PLATING)COPPER PLATED 0.5μm min	5	S.PVC	GRAY
1	POLYAMIDE	NATURAL (BEIGE), UL94V-0	4	RIGID POLYVINYLCHLORIDE	ELECTROSTATIC PROTECTION, CLEAR
			3	BRASS	SURFACE:TIN PLATED 1μm min (UNDER PLATING)NICKEL PLATED 1μm min
NO.	MATERIAL	FINISH, REMARKS	NO.	MATERIAL	FINISH, REMARKS
CODE NO. (OLD) CL		DRAWN M.Nakamoto '04.03.30	DESIGNED H.Umehara '04.03.30	CHECKED T.Miyazaki '04.03.30	APPROVED T.Oma '04.03.31
DRAWING NO. EDC3-305938-10		PART NO. DF3DZ-*P-2V(20)		CODE NO. CL543-	
SCALE 5 : 1		UNITS mm		HRS HIROSE ELECTRIC CO., LTD	

1/2

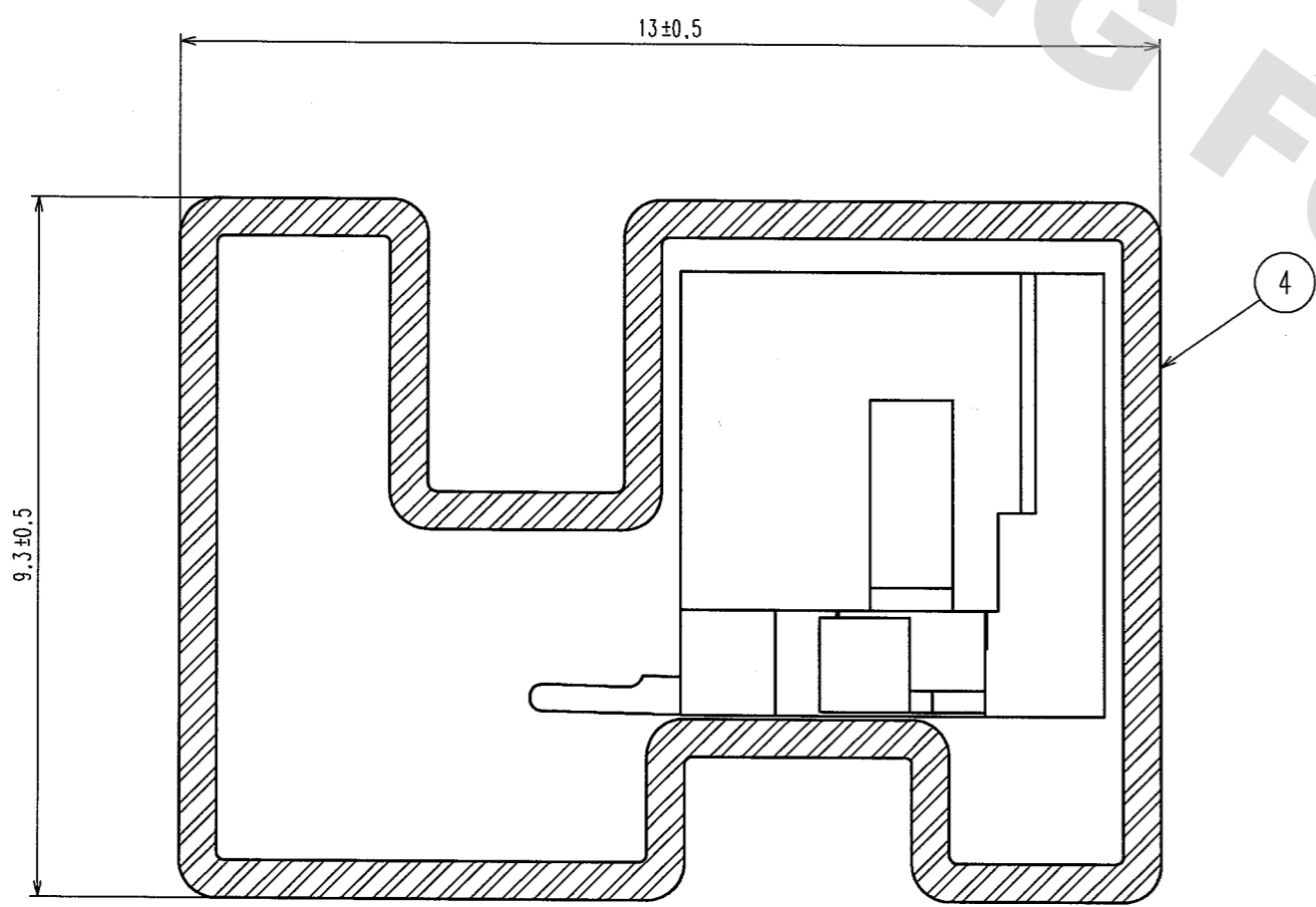
DRAWING FOR REFERENCE: This is subject to change without notice
08/11/2012

TO

COUNT	DESCRIPTION OF REVISIONS	BY	CHKD	DATE	COUNT	DESCRIPTION OF REVISIONS	BY	CHKD	DATE



E-E (10:1)



PART No.	CODE No.	NUMBER OF CONNECTORS
DF3DZ- 2P-2V(20)	CL543-1056-0-20	41
DF3DZ- 3P-2V(20)	CL543-1057-2-20	34
DF3DZ- 4P-2V(20)	CL543-1058-5-20	30
DF3DZ- 5P-2V(20)	CL543-1059-8-20	26
DF3DZ- 6P-2V(20)	CL543-1060-7-20	23
DF3DZ- 7P-2V(20)	CL543-1061-0-20	21
DF3DZ- 8P-2V(20)	CL543-1062-2-20	19
DF3DZ- 9P-2V(20)	CL543-1063-5-20	18
DF3DZ-10P-2V(20)	CL543-1064-8-20	17
DF3DZ-11P-2V(20)	CL543-1065-0-20	15
DF3DZ-12P-2V(20)	CL543-1066-3-20	14
DF3DZ-13P-2V(20)	CL543-1067-6-20	14
DF3DZ-14P-2V(20)	CL543-1068-9-20	13
DF3DZ-15P-2V(20)	CL543-1069-1-20	12

NOTES
4. NUMBER OF CONNECTERS PER A MAGAZINE CASE SHALL BE IN ACCORDANCE WITH THE LIST.
5. THESE CONNECTERS SHALL BE ON SALED IN ACCORDANCE WITH THE MULTIPLE QUANTITY ON THE LIST.

NO.	MATERIAL	FINISH, REMARKS	NO.	MATERIAL	FINISH, REMARKS

CODE NO. (OLD) CL	DRAWN M.Nakamoto '04.03.25	DESIGNED H.Umehara '04.03.25	CHECKED T.Miyazaki '04.03.26	APPROVED T.Oma '04.03.31	RELEASED
----------------------	----------------------------------	------------------------------------	------------------------------------	--------------------------------	--------------

SCALE FR:EE UNITS mm	DRAWING NO. EDC3-305938-10 HRS HIROSE ELECTRIC CO., LTD	PART NO. DF3DZ-※P-2V(20) CODE NO. CL543-	2
-------------------------------	--	---	---



X-ON Electronics

Largest Supplier of Electrical and Electronic Components

Click to view similar products for [Headers & Wire Housings](#) category:

Click to view products by [Hirose](#) manufacturer:

Other Similar products are found below :

[892-18-020-10-001101](#) [58102-G61-06LF](#) [582553-1](#) [0009485154](#) [009176003701906](#) [0050291907](#) [LY20-4P-DT1-P1E-BR](#) [02.125.8002.8](#)
[609-3404](#) [61062-3](#) [622-0430](#) [622-3653LF](#) [63453-116](#) [636-1030](#) [636-1427](#) [636-3427](#) [636-4007](#) [641938-9](#) [641991-4](#) [644827-2](#) [65817-010LF](#)
[65817-015LF](#) [65863-015LF](#) [66207-023LF](#) [67095-007LF](#) [67601157](#) [68648-049](#) [70.362.1628.0](#) [70-4210](#) [70-4226B](#) [70-4853B](#) [707-5020](#) [707-5028](#) [71.350.2428.0](#) [71918-208LF](#) [71961-016LF](#) [733-134](#) [733-162](#) [754199-000](#) [760-3052](#) [787-8014-00](#) [79531-3000](#) [FCN-360C032-B](#) [FCN-367T-T012/H](#) [FCN-723D010/2](#) [80.063.4001.1](#) [800-90-001-10-001000](#) [800-90-010-10-002000](#) [801-43-002-10-013000](#) [801-43-006-10-002000](#)