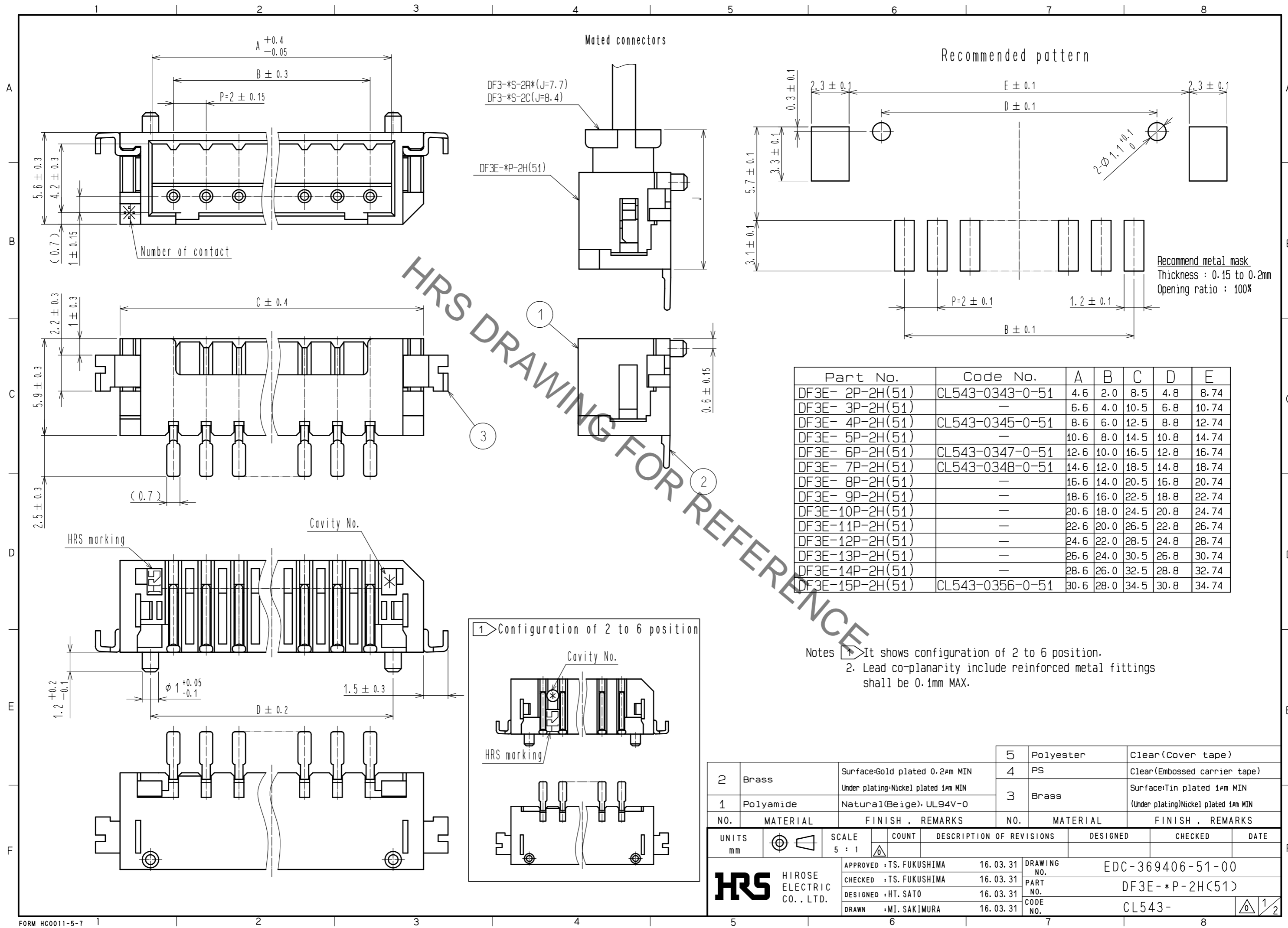


Sep.1.2020 Copyright 2020 HIROSE ELECTRIC CO., LTD. All Rights Reserved.  
In case of consideration for using Automotive equipment / device which demand high reliability, kindly contact our sales window correspondents.



Part No.	Code No.	A	B	C	D	E
DF3E- 2P-2H(51)	CL543-0343-0-51	4.6	2.0	8.5	4.8	8.74
DF3E- 3P-2H(51)	-	6.6	4.0	10.5	6.8	10.74
DF3E- 4P-2H(51)	CL543-0345-0-51	8.6	6.0	12.5	8.8	12.74
DF3E- 5P-2H(51)	-	10.6	8.0	14.5	10.8	14.74
DF3E- 6P-2H(51)	CL543-0347-0-51	12.6	10.0	16.5	12.8	16.74
DF3E- 7P-2H(51)	CL543-0348-0-51	14.6	12.0	18.5	14.8	18.74
DF3E- 8P-2H(51)	-	16.6	14.0	20.5	16.8	20.74
DF3E- 9P-2H(51)	-	18.6	16.0	22.5	18.8	22.74
DF3E-10P-2H(51)	-	20.6	18.0	24.5	20.8	24.74
DF3E-11P-2H(51)	-	22.6	20.0	26.5	22.8	26.74
DF3E-12P-2H(51)	-	24.6	22.0	28.5	24.8	28.74
DF3E-13P-2H(51)	-	26.6	24.0	30.5	26.8	30.74
DF3E-14P-2H(51)	-	28.6	26.0	32.5	28.8	32.74
DF3E-15P-2H(51)	CL543-0356-0-51	30.6	28.0	34.5	30.8	34.74

NO.	MATERIAL	FINISH . REMARKS	NO.	MATERIAL	FINISH . REMARKS
2	Brass	Surface:Gold plated 0.2μm MIN Under plating:Nickel plated 1μm MIN	5	Polyester	Clear(Cover tape)
1	Polyamide	Natural(Beige), UL94V-0	4	PS	Clear(Embossed carrier tape)
			3	Brass	Surface:Tin plated 1μm MIN (Under plating)Nickel plated 1μm MIN

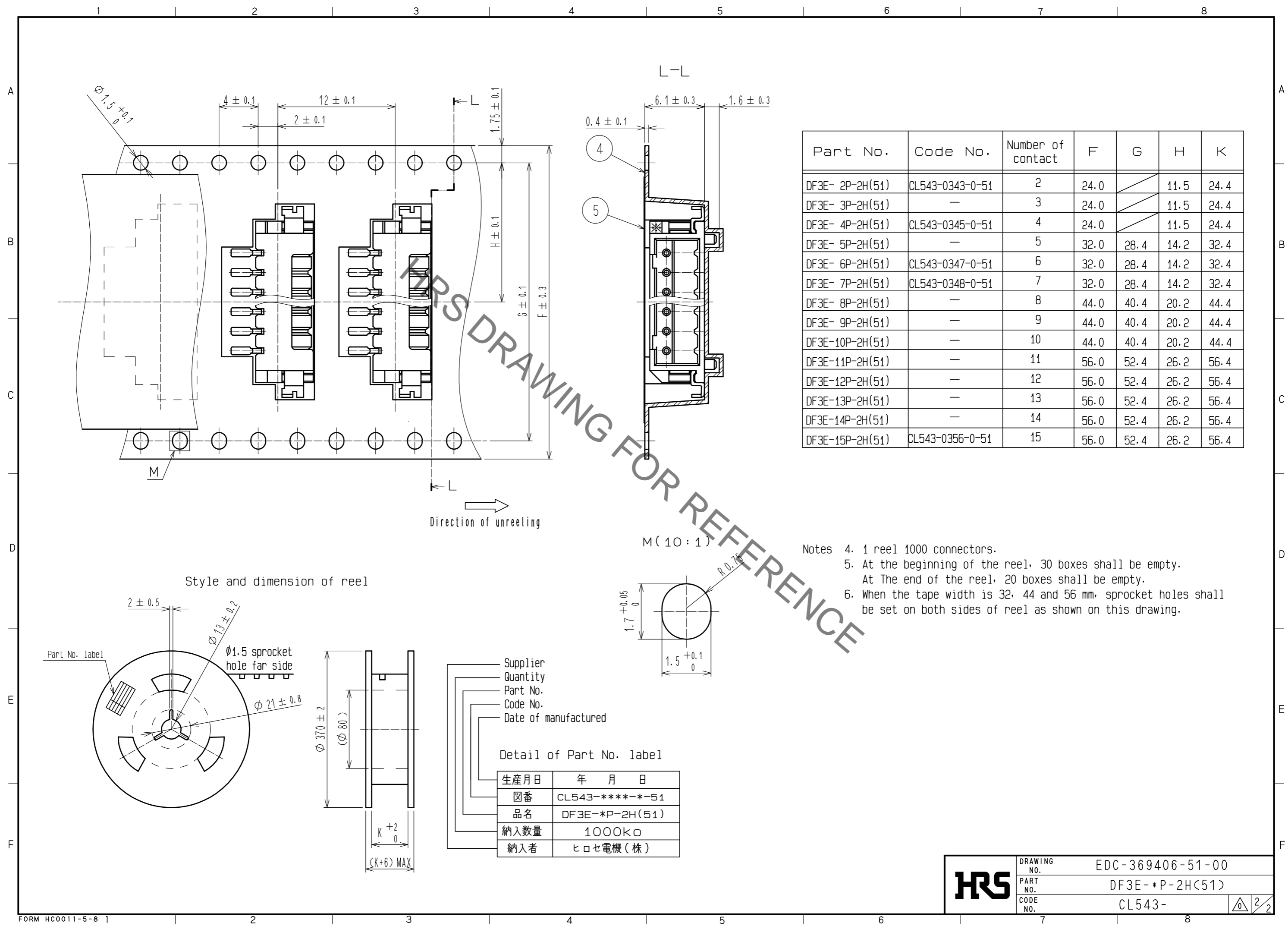
  

UNITS	SCALE	COUNT	DESCRIPTION OF REVISIONS	DESIGNED	CHECKED	DATE
mm	5 : 1	△	APPROVED : TS. FUKUSHIMA 16.03.31			
			CHECKED : TS. FUKUSHIMA 16.03.31			
			DESIGNED : HT. SATO 16.03.31			
			DRAWN : MI. SAKIMURA 16.03.31			

DRAWING NO.	EDC-369406-51-00
PART NO.	DF3E-*P-2H(51)
CODE NO.	CL543-

Sep.1.2020 Copyright 2020 HIROSE ELECTRIC CO., LTD. All Rights Reserved.  
In case of consideration for using Automotive equipment / device which demand high reliability, kindly contact our sales window correspondents.



Part No.	Code No.	Number of contact	F	G	H	K
DF3E- 2P-2H(51)	CL543-0343-0-51	2	24.0		11.5	24.4
DF3E- 3P-2H(51)	—	3	24.0		11.5	24.4
DF3E- 4P-2H(51)	CL543-0345-0-51	4	24.0		11.5	24.4
DF3E- 5P-2H(51)	—	5	32.0	28.4	14.2	32.4
DF3E- 6P-2H(51)	CL543-0347-0-51	6	32.0	28.4	14.2	32.4
DF3E- 7P-2H(51)	CL543-0348-0-51	7	32.0	28.4	14.2	32.4
DF3E- 8P-2H(51)	—	8	44.0	40.4	20.2	44.4
DF3E- 9P-2H(51)	—	9	44.0	40.4	20.2	44.4
DF3E-10P-2H(51)	—	10	44.0	40.4	20.2	44.4
DF3E-11P-2H(51)	—	11	56.0	52.4	26.2	56.4
DF3E-12P-2H(51)	—	12	56.0	52.4	26.2	56.4
DF3E-13P-2H(51)	—	13	56.0	52.4	26.2	56.4
DF3E-14P-2H(51)	—	14	56.0	52.4	26.2	56.4
DF3E-15P-2H(51)	CL543-0356-0-51	15	56.0	52.4	26.2	56.4

- Notes
- 1 reel 1000 connectors.
  - At the beginning of the reel, 30 boxes shall be empty.  
At The end of the reel, 20 boxes shall be empty.
  - When the tape width is 32, 44 and 56 mm, sprocket holes shall be set on both sides of reel as shown on this drawing.

Supplier  
Quantity  
Part No.  
Code No.  
Date of manufactured

Detail of Part No. label

生産月日	年 月 日
箱番	CL543-****-**-51
品名	DF3E-*P-2H(51)
納入数量	1000K□
納入者	ヒロセ電機(株)

**HRS**

DRAWING NO.	EDC-369406-51-00
PART NO.	DF3E-*P-2H(51)
CODE NO.	CL543-

2/2

## X-ON Electronics

Largest Supplier of Electrical and Electronic Components

*Click to view similar products for [Hirose](#) manufacturer:*

Other Similar products are found below :

[HR212-10P-8P\(71\)](#) [RM15TPN-10PC\(71\)](#) [SC-1634](#) [MDF7-40DP-2.54DSA\(55\)](#) [FX2-100S-1.27SVL\(71\)](#) [GT5H-1PP-HU\(10\)](#) [HLS-JJ-1\(40\)](#)  
[DF13EA-30DP-1.25V\(55\)](#) [RM15WTRZ-12S\(71\)](#) [RM21TP-20P\(71\)](#) [MRF18-8P-178BU](#) [MS-156R-NJ-1](#) [DX30AM-100P](#) [HR10A-10R-10SB\(72\)](#) [HR10G-10R-12S\(71\)](#) [HR212-10P-8P\(72\)](#) [HR25-7TP-8P\(73\)](#) [HR25-9TR-12P\(71\)](#) [HR25A-7J-4P](#) [HR30-7P-C\(71\)](#) [HRM-513S](#)  
[HRMP-X.FLJ](#) [FH52E-18S-0.5SH\(99\)](#) [PCN10-44P-2.54DSA\(72\)](#) [FX2C2-68S-1.27DSAL\(71\)](#) [PO51-LR-PC-1\(40\)](#) [HIF6-68D-1.27R\(20\)](#) [HOS-7](#) [HR10A-10WTR-12P\(74\)](#) [HR10A-13P-20SC\(73\)](#) [HR10A-13TPD-20P\(73\)](#) [HR22-12WTRA-20PC\(73\)](#) [HR25A-7R-8P](#) [U.FL-LP\(V\)-04N1-A-\(500\)](#) [LF13WBP-20S](#) [DF3EA-2P-2V\(50\)](#) [DH-37-CMB\(8.8\)](#) [U.FL-2LP-068N1-A-\(50\)](#) [U.FL-2LP-062N1D-A-\(100\)](#) [A4B-13PA-2DS\(71\)](#)  
[QR/P-12S-C\(51\)](#) [JR25WCC-16\(71\)](#) [JR16WCC-10\(71\)](#) [CM-105\(92\)](#) [LF13BJ-T01](#) [HT802/HR41A-11-18](#) [HT802/DF64-1822P](#)  
[HT802/DF63W-1618S-2](#) [HT801/DF62-30\(10\)](#) [HT305/DF61-2226S](#)