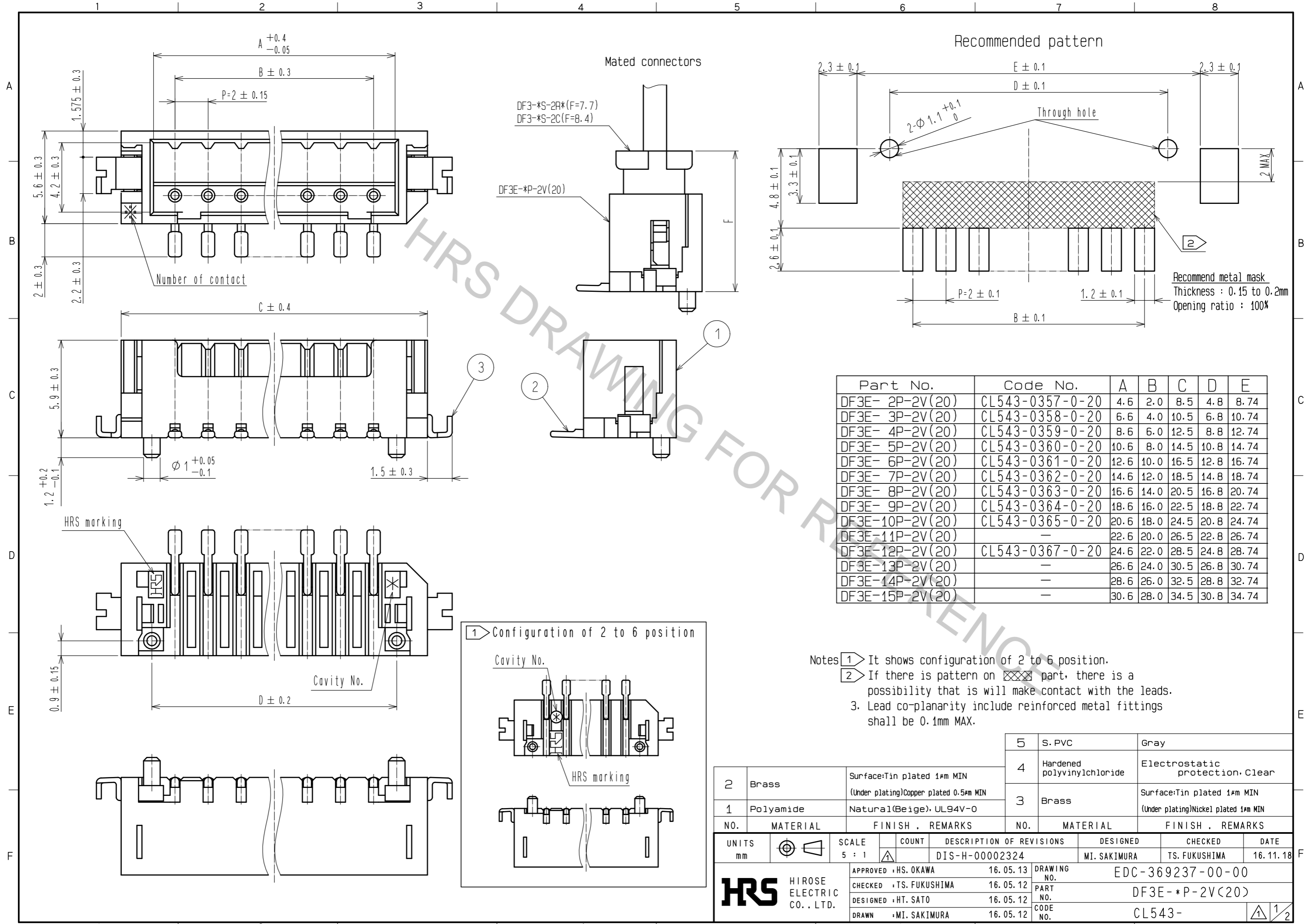


Sep.1.2017 Copyright 2017 HIROSE ELECTRIC CO., LTD. All Rights Reserved.



Part No.	Code No.	A	B	C	D	E
DF3E- 2P-2V(20)	CL543-0357-0-20	4.6	2.0	8.5	4.8	8.74
DF3E- 3P-2V(20)	CL543-0358-0-20	6.6	4.0	10.5	6.8	10.74
DF3E- 4P-2V(20)	CL543-0359-0-20	8.6	6.0	12.5	8.8	12.74
DF3E- 5P-2V(20)	CL543-0360-0-20	10.6	8.0	14.5	10.8	14.74
DF3E- 6P-2V(20)	CL543-0361-0-20	12.6	10.0	16.5	12.8	16.74
DF3E- 7P-2V(20)	CL543-0362-0-20	14.6	12.0	18.5	14.8	18.74
DF3E- 8P-2V(20)	CL543-0363-0-20	16.6	14.0	20.5	16.8	20.74
DF3E- 9P-2V(20)	CL543-0364-0-20	18.6	16.0	22.5	18.8	22.74
DF3E-10P-2V(20)	CL543-0365-0-20	20.6	18.0	24.5	20.8	24.74
DF3E-11P-2V(20)	-	22.6	20.0	26.5	22.8	26.74
DF3E-12P-2V(20)	CL543-0367-0-20	24.6	22.0	28.5	24.8	28.74
DF3E-13P-2V(20)	-	26.6	24.0	30.5	26.8	30.74
DF3E-14P-2V(20)	-	28.6	26.0	32.5	28.8	32.74
DF3E-15P-2V(20)	-	30.6	28.0	34.5	30.8	34.74

- Notes
- It shows configuration of 2 to 6 position.
 - If there is pattern on part, there is a possibility that it will make contact with the leads.
 - Lead co-planarity include reinforced metal fittings shall be 0.1mm MAX.

NO.	MATERIAL	FINISH . REMARKS	NO.	MATERIAL	FINISH . REMARKS
2	Brass	Surface: Tin plated 1μm MIN (Under plating) Copper plated 0.5μm MIN	5	S. PVC	Gray
1	Polyamide	Natural(Beige), UL94V-0	4	Hardened polyvinylchloride	Electrostatic protection, Clear
			3	Brass	Surface: Tin plated 1μm MIN (Under plating) Nickel plated 1μm MIN

UNITS	SCALE	COUNT	DESCRIPTION OF REVISIONS	DESIGNED	CHECKED	DATE
mm	5 : 1	△	DIS-H-00002324	MI. SAKIMURA	TS. FUKUSHIMA	16.11.18

APPROVED	: HS. OKAWA	16.05.13	DRAWING NO.	EDC-369237-00-00	
CHECKED	: TS. FUKUSHIMA	16.05.12	PART NO.	DF3E-*P-2V(20)	
DESIGNED	: HT. SATO	16.05.12	CODE NO.	CL543-	
DRAWN	: MI. SAKIMURA	16.05.12			

Sep.1.2017 Copyright 2017 HIROSE ELECTRIC CO., LTD. All Rights Reserved.

1 2 3 4 5 6 7 8

A A

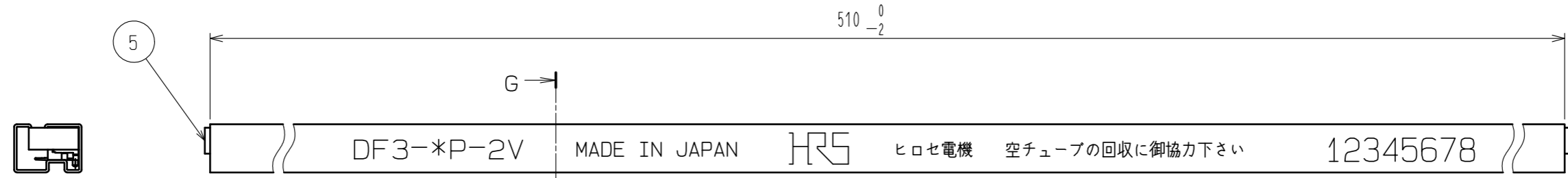
B B

C C

D D

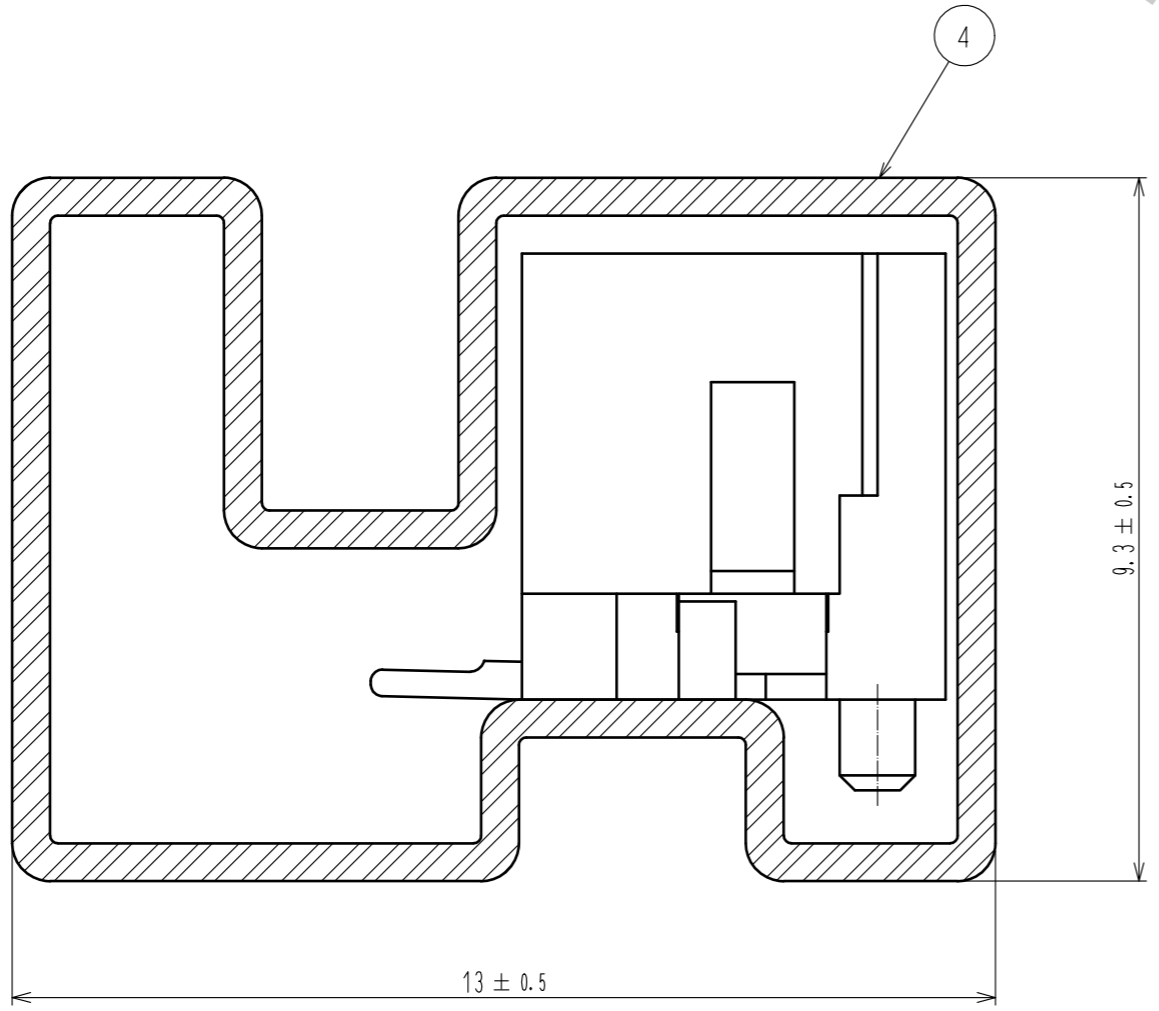
E E

F F



Notes 4. Number of connectors per a magazine case shall be in accordance with the list.
 5. These connectors shall be on saled in accordance with the multiple quantity on the list.

G-G (10:1)



Part No.	Code No.	Number of connectors
DF3E- 2P-2V(20)	CL543-0357-0-20	41
DF3E- 3P-2V(20)	CL543-0358-0-20	34
DF3E- 4P-2V(20)	CL543-0359-0-20	30
DF3E- 5P-2V(20)	CL543-0360-0-20	26
DF3E- 6P-2V(20)	CL543-0361-0-20	23
DF3E- 7P-2V(20)	CL543-0362-0-20	21
DF3E- 8P-2V(20)	CL543-0363-0-20	19
DF3E- 9P-2V(20)	CL543-0364-0-20	18
DF3E-10P-2V(20)	CL543-0365-0-20	17
DF3E-11P-2V(20)	-	15
DF3E-12P-2V(20)	CL543-0367-0-20	14
DF3E-13P-2V(20)	-	14
DF3E-14P-2V(20)	-	13
DF3E-15P-2V(20)	-	12

HRS	DRAWING NO.	EDC-369237-00-00
	PART NO.	DF3E-*P-2V(20)
	CODE NO.	CL543-

X-ON Electronics

Largest Supplier of Electrical and Electronic Components

Click to view similar products for [Headers & Wire Housings](#) category:

Click to view products by [Hirose](#) manufacturer:

Other Similar products are found below :

[892-18-020-10-001101](#) [58102-G61-06LF](#) [582553-1](#) [0009485154](#) [009176003701906](#) [0050291907](#) [LY20-4P-DT1-P1E-BR](#) [02.125.8002.8](#)
[609-3404](#) [61062-3](#) [622-0430](#) [622-3653LF](#) [63453-116](#) [636-1030](#) [636-1427](#) [636-3427](#) [636-4007](#) [641938-9](#) [641991-4](#) [644827-2](#) [65817-010LF](#)
[65817-015LF](#) [65863-015LF](#) [66207-023LF](#) [67095-007LF](#) [67601157](#) [68648-049](#) [70.362.1628.0](#) [70-4210](#) [70-4226B](#) [70-4853B](#) [707-5020](#) [707-5028](#) [71.350.2428.0](#) [71918-208LF](#) [71961-016LF](#) [733-134](#) [733-162](#) [754199-000](#) [760-3052](#) [787-8014-00](#) [79531-3000](#) [FCN-360C032-B](#) [FCN-367T-T012/H](#) [FCN-723D010/2](#) [80.063.4001.1](#) [800-90-001-10-001000](#) [800-90-010-10-002000](#) [801-43-002-10-013000](#) [801-43-006-10-002000](#)