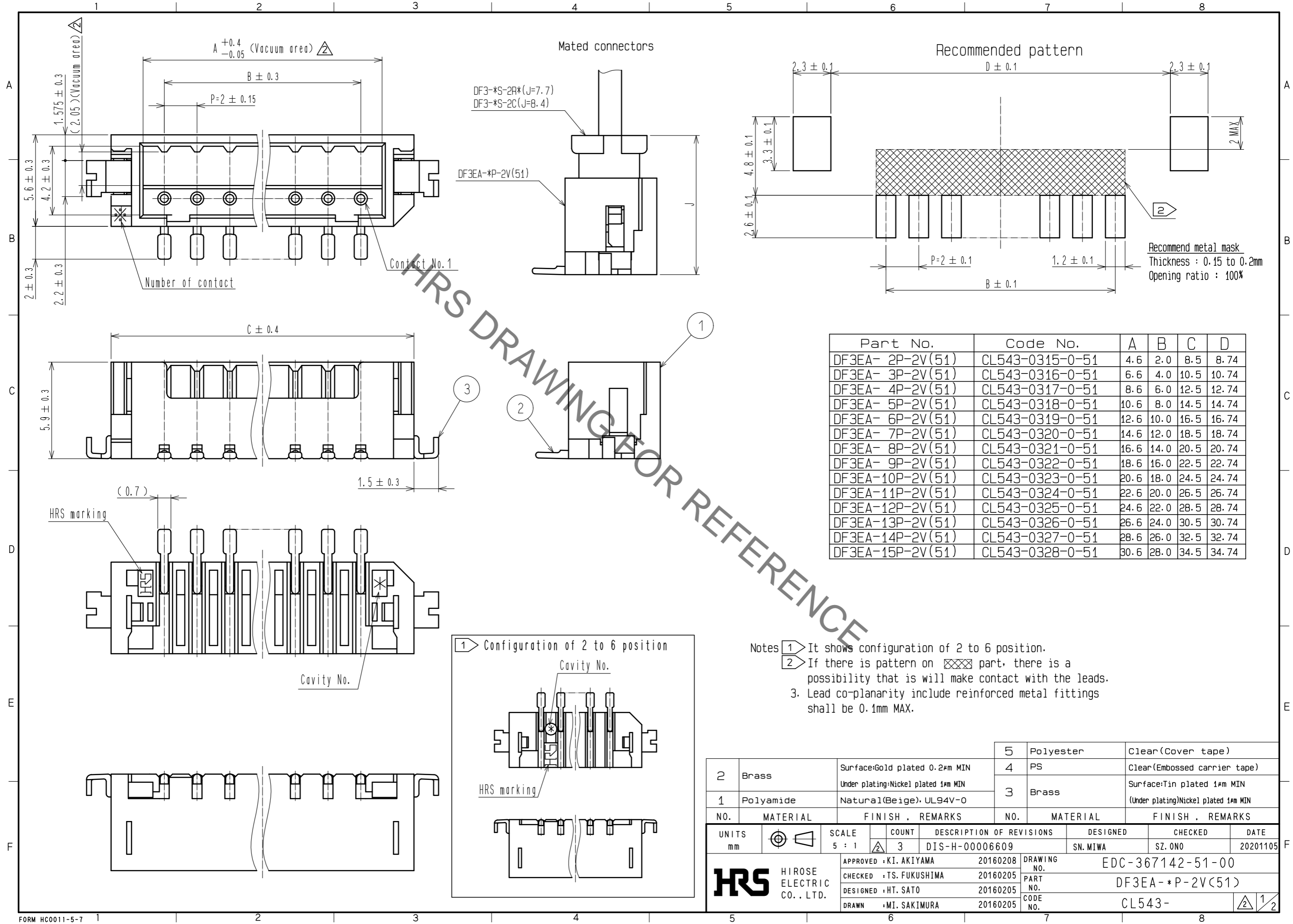


Aug.1.2021 Copyright 2021 HIROSE ELECTRIC CO., LTD. All Rights Reserved.  
In case of consideration for using Automotive equipment / device which demand high reliability, kindly contact our sales window correspondents.



| Part No.         | Code No.        | A    | B    | C    | D     |
|------------------|-----------------|------|------|------|-------|
| DF3EA- 2P-2V(51) | CL543-0315-0-51 | 4.6  | 2.0  | 8.5  | 8.74  |
| DF3EA- 3P-2V(51) | CL543-0316-0-51 | 6.6  | 4.0  | 10.5 | 10.74 |
| DF3EA- 4P-2V(51) | CL543-0317-0-51 | 8.6  | 6.0  | 12.5 | 12.74 |
| DF3EA- 5P-2V(51) | CL543-0318-0-51 | 10.6 | 8.0  | 14.5 | 14.74 |
| DF3EA- 6P-2V(51) | CL543-0319-0-51 | 12.6 | 10.0 | 16.5 | 16.74 |
| DF3EA- 7P-2V(51) | CL543-0320-0-51 | 14.6 | 12.0 | 18.5 | 18.74 |
| DF3EA- 8P-2V(51) | CL543-0321-0-51 | 16.6 | 14.0 | 20.5 | 20.74 |
| DF3EA- 9P-2V(51) | CL543-0322-0-51 | 18.6 | 16.0 | 22.5 | 22.74 |
| DF3EA-10P-2V(51) | CL543-0323-0-51 | 20.6 | 18.0 | 24.5 | 24.74 |
| DF3EA-11P-2V(51) | CL543-0324-0-51 | 22.6 | 20.0 | 26.5 | 26.74 |
| DF3EA-12P-2V(51) | CL543-0325-0-51 | 24.6 | 22.0 | 28.5 | 28.74 |
| DF3EA-13P-2V(51) | CL543-0326-0-51 | 26.6 | 24.0 | 30.5 | 30.74 |
| DF3EA-14P-2V(51) | CL543-0327-0-51 | 28.6 | 26.0 | 32.5 | 32.74 |
| DF3EA-15P-2V(51) | CL543-0328-0-51 | 30.6 | 28.0 | 34.5 | 34.74 |

- Notes
- 1 It shows configuration of 2 to 6 position.
  - 2 If there is pattern on part, there is a possibility that it will make contact with the leads.
  3. Lead co-planarity include reinforced metal fittings shall be 0.1mm MAX.

| NO. | MATERIAL  | FINISH   | REMARKS | NO. | MATERIAL  | FINISH | REMARKS  |
|-----|-----------|--|---------|-----|-----------|--------|--|
| 2   | Brass     | Surface:Gold plated 0.2μm MIN<br>Under plating:Nickel plated 1μm MIN |         | 5   | Polyester |        | Clear(Cover tape)  |
| 1   | Polyamide | Natural(Beige), UL94V-0  |         | 4   | PS        |        | Clear(Embossed carrier tape)                                       |
|     |           |  |         | 3   | Brass     |        | Surface:Tin plated 1μm MIN<br>(Under plating)Nickel plated 1μm MIN |

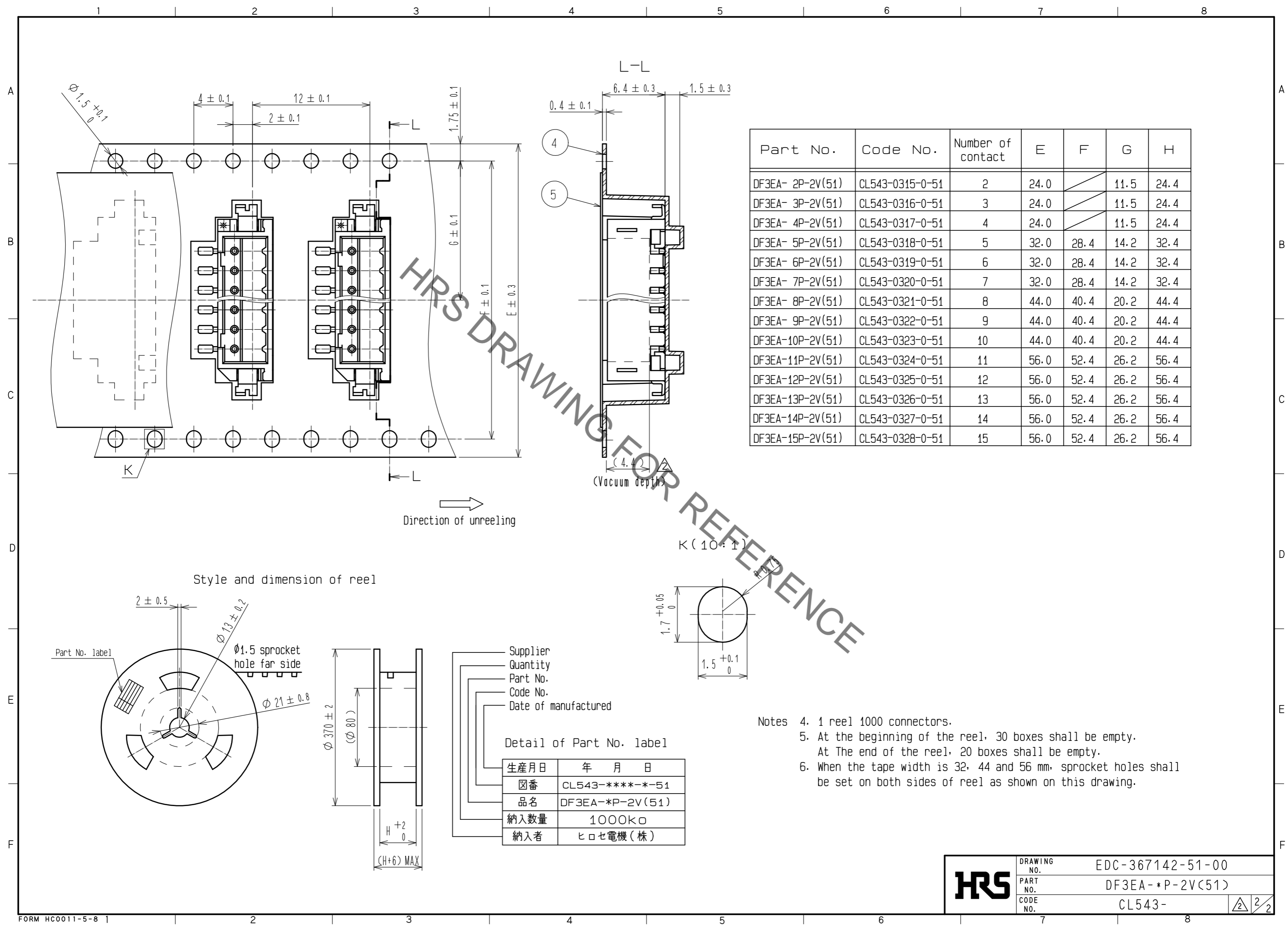
  

| UNITS | SCALE | COUNT | DESCRIPTION OF REVISIONS | DESIGNED | CHECKED | DATE     |
|-------|-------|-------|--------------------------|----------|---------|----------|
| mm    | 5 : 1 | 3     | DIS-H-00006609           | SN. MIWA | SZ. ONO | 20201105 |

|                         |          |             |                  |
|-------------------------|----------|-------------|------------------|
| APPROVED : KI. AKIYAMA  | 20160208 | DRAWING NO. | EDC-367142-51-00 |
| CHECKED : TS. FUKUSHIMA | 20160205 | PART NO.    | DF3EA- *P-2V(51) |
| DESIGNED : HT. SATO     | 20160205 | CODE NO.    | CL543-           |
| DRAWN : MI. SAKIMURA    | 20160205 |             |                  |

Aug.1.2021 Copyright 2021 HIROSE ELECTRIC CO., LTD. All Rights Reserved.  
In case of consideration for using Automotive equipment / device which demand high reliability, kindly contact our sales window correspondents.



| Part No.         | Code No.        | Number of contact | E    | F    | G    | H    |
|------------------|-----------------|-------------------|------|------|------|------|
| DF3EA- 2P-2V(51) | CL543-0315-0-51 | 2                 | 24.0 |      | 11.5 | 24.4 |
| DF3EA- 3P-2V(51) | CL543-0316-0-51 | 3                 | 24.0 |      | 11.5 | 24.4 |
| DF3EA- 4P-2V(51) | CL543-0317-0-51 | 4                 | 24.0 |      | 11.5 | 24.4 |
| DF3EA- 5P-2V(51) | CL543-0318-0-51 | 5                 | 32.0 | 28.4 | 14.2 | 32.4 |
| DF3EA- 6P-2V(51) | CL543-0319-0-51 | 6                 | 32.0 | 28.4 | 14.2 | 32.4 |
| DF3EA- 7P-2V(51) | CL543-0320-0-51 | 7                 | 32.0 | 28.4 | 14.2 | 32.4 |
| DF3EA- 8P-2V(51) | CL543-0321-0-51 | 8                 | 44.0 | 40.4 | 20.2 | 44.4 |
| DF3EA- 9P-2V(51) | CL543-0322-0-51 | 9                 | 44.0 | 40.4 | 20.2 | 44.4 |
| DF3EA-10P-2V(51) | CL543-0323-0-51 | 10                | 44.0 | 40.4 | 20.2 | 44.4 |
| DF3EA-11P-2V(51) | CL543-0324-0-51 | 11                | 56.0 | 52.4 | 26.2 | 56.4 |
| DF3EA-12P-2V(51) | CL543-0325-0-51 | 12                | 56.0 | 52.4 | 26.2 | 56.4 |
| DF3EA-13P-2V(51) | CL543-0326-0-51 | 13                | 56.0 | 52.4 | 26.2 | 56.4 |
| DF3EA-14P-2V(51) | CL543-0327-0-51 | 14                | 56.0 | 52.4 | 26.2 | 56.4 |
| DF3EA-15P-2V(51) | CL543-0328-0-51 | 15                | 56.0 | 52.4 | 26.2 | 56.4 |

Style and dimension of reel

Direction of unreeling

K (10:1)

Supplier  
Quantity  
Part No.  
Code No.  
Date of manufactured

Detail of Part No. label

|      |                 |
|------|-----------------|
| 生産月日 | 年 月 日           |
| 図番   | CL543-****-*-51 |
| 品名   | DF3EA-*P-2V(51) |
| 納入数量 | 1000K $\square$ |
| 納入者  | ヒロセ電機(株)        |

- Notes
- 1 reel 1000 connectors.
  - At the beginning of the reel, 30 boxes shall be empty.  
At The end of the reel, 20 boxes shall be empty.
  - When the tape width is 32, 44 and 56 mm, sprocket holes shall be set on both sides of reel as shown on this drawing.

|            |             |                  |
|------------|-------------|------------------|
| <b>HRS</b> | DRAWING NO. | EDC-367142-51-00 |
|            | PART NO.    | DF3EA-*P-2V(51)  |
|            | CODE NO.    | CL543-           |

## X-ON Electronics

Largest Supplier of Electrical and Electronic Components

*Click to view similar products for [Headers & Wire Housings](#) category:*

*Click to view products by [Hirose](#) manufacturer:*

Other Similar products are found below :

[892-18-020-10-001101](#) [58102-G61-06LF](#) [582553-1](#) [0009485154](#) [009176003701906](#) [0050291907](#) [LY20-4P-DT1-P1E-BR](#) [02.125.8002.8](#)  
[609-3404](#) [61062-3](#) [622-0430](#) [622-3653LF](#) [63453-116](#) [636-1030](#) [636-1427](#) [636-3427](#) [636-4007](#) [641938-9](#) [641991-4](#) [644827-2](#) [65817-010LF](#)  
[65817-015LF](#) [65863-015LF](#) [66207-023LF](#) [67095-007LF](#) [67601157](#) [68648-049](#) [70.362.1628.0](#) [70-4210](#) [70-4226B](#) [70-4853B](#) [707-5020](#) [707-](#)  
[5028](#) [71.350.2428.0](#) [71918-208LF](#) [71961-016LF](#) [733-134](#) [733-162](#) [754199-000](#) [760-3052](#) [787-8014-00](#) [79531-3000](#) [FCN-360C032-B](#) [FCN-](#)  
[367T-T012/H](#) [FCN-723D010/2](#) [80.063.4001.1](#) [800-90-001-10-001000](#) [800-90-010-10-002000](#) [801-43-002-10-013000](#) [801-43-006-10-002000](#)