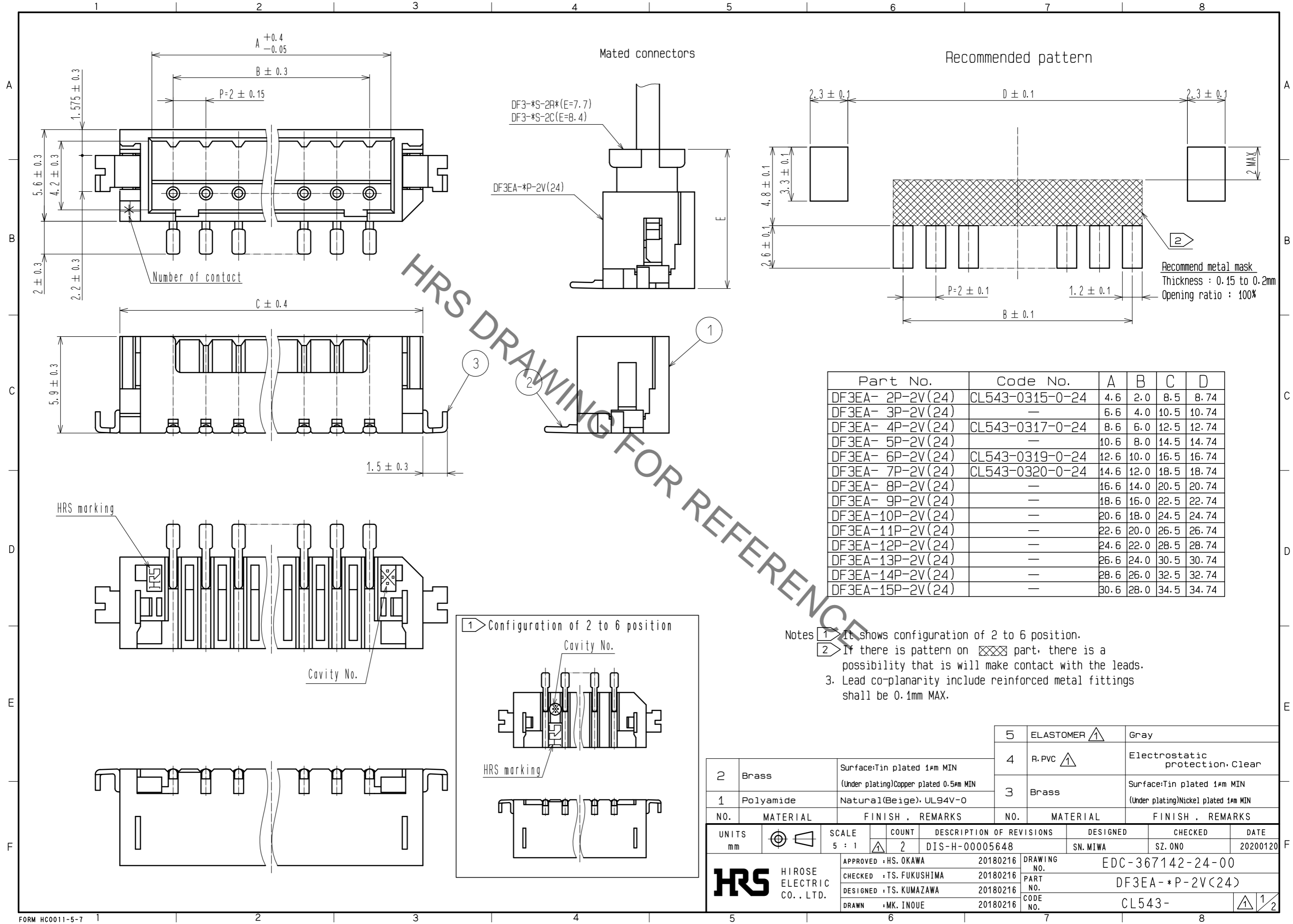


Aug.1.2021 Copyright 2021 HIROSE ELECTRIC CO., LTD. All Rights Reserved.  
In case of consideration for using Automotive equipment / device which demand high reliability, kindly contact our sales window correspondents.



Part No.	Code No.	A	B	C	D
DF3EA- 2P-2V(24)	CL543-0315-0-24	4.6	2.0	8.5	8.74
DF3EA- 3P-2V(24)	—	6.6	4.0	10.5	10.74
DF3EA- 4P-2V(24)	CL543-0317-0-24	8.6	6.0	12.5	12.74
DF3EA- 5P-2V(24)	—	10.6	8.0	14.5	14.74
DF3EA- 6P-2V(24)	CL543-0319-0-24	12.6	10.0	16.5	16.74
DF3EA- 7P-2V(24)	CL543-0320-0-24	14.6	12.0	18.5	18.74
DF3EA- 8P-2V(24)	—	16.6	14.0	20.5	20.74
DF3EA- 9P-2V(24)	—	18.6	16.0	22.5	22.74
DF3EA-10P-2V(24)	—	20.6	18.0	24.5	24.74
DF3EA-11P-2V(24)	—	22.6	20.0	26.5	26.74
DF3EA-12P-2V(24)	—	24.6	22.0	28.5	28.74
DF3EA-13P-2V(24)	—	26.6	24.0	30.5	30.74
DF3EA-14P-2V(24)	—	28.6	26.0	32.5	32.74
DF3EA-15P-2V(24)	—	30.6	28.0	34.5	34.74

- Notes
- 1 It shows configuration of 2 to 6 position.
  - 2 If there is pattern on part, there is a possibility that it will make contact with the leads.
  - 3. Lead co-planarity include reinforced metal fittings shall be 0.1mm MAX.

NO.	MATERIAL	FINISH	REMARKS	NO.	MATERIAL	FINISH	REMARKS
2	Brass	Surface: Tin plated 1μm MIN (Under plating) Copper plated 0.5μm MIN		5	ELASTOMER		Gray
1	Polyamide	Natural(Beige), UL94V-0		4	R.PVC		Electrostatic protection, Clear
				3	Brass		Surface: Tin plated 1μm MIN (Under plating) Nickel plated 1μm MIN

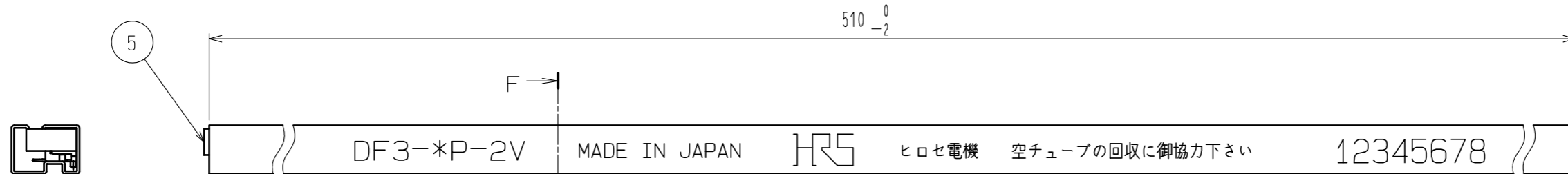
  

UNITS	SCALE	COUNT	DESCRIPTION OF REVISIONS	DESIGNED	CHECKED	DATE
mm	5 : 1	2	DIS-H-00005648	SN. MIWA	SZ. ONO	20200120

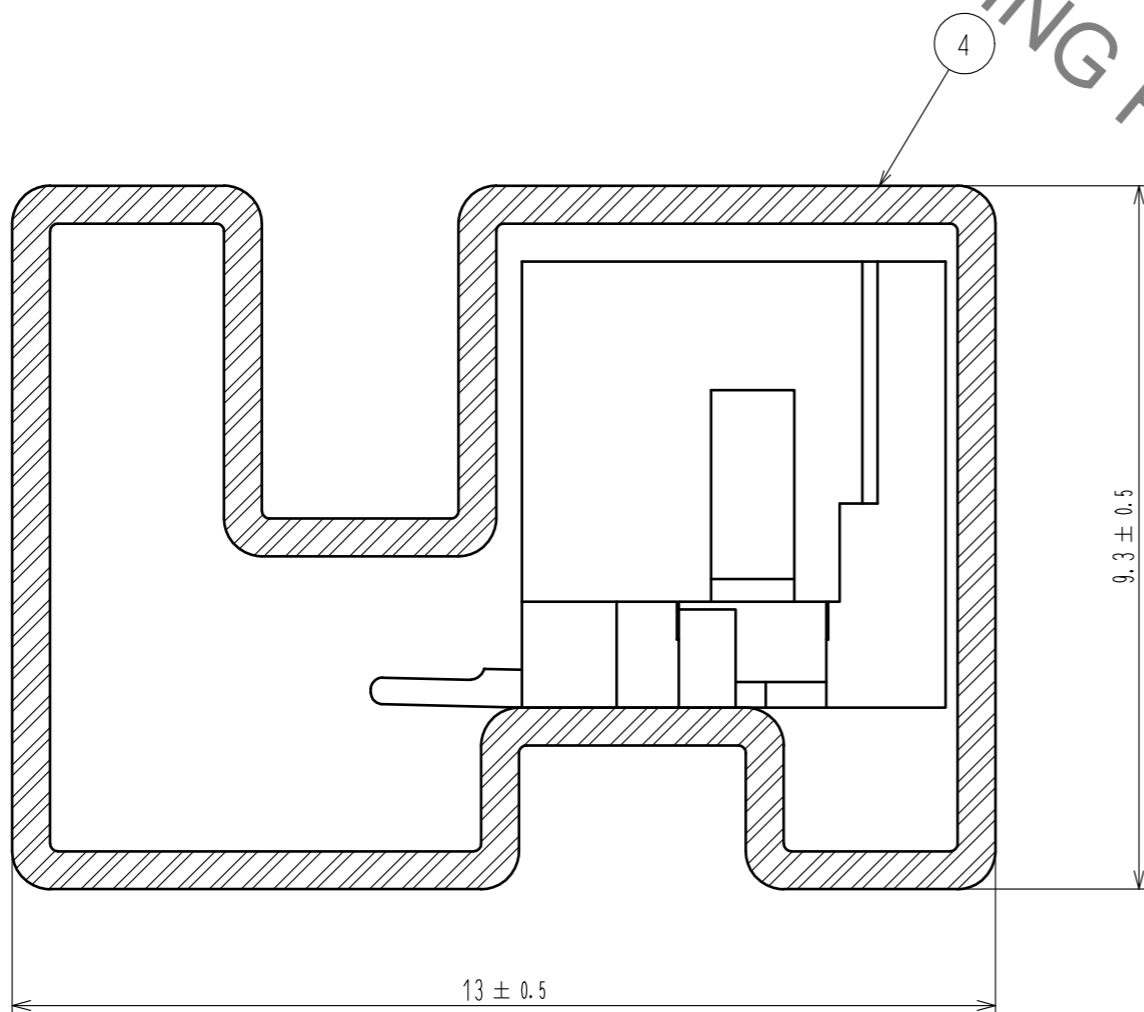
APPROVED	CHECKED	DESIGNED	DRAWN	DRAWING NO.	PART NO.	CODE NO.
HS. OKAWA	TS. FUKUSHIMA	TS. KUMAZAWA	MK. INOUE	20180216	20180216	20180216
				EDC-367142-24-00		
				DF3EA-*P-2V(24)		
				CL543-		

Aug.1.2021 Copyright 2021 HIROSE ELECTRIC CO., LTD. All Rights Reserved.  
 In case of consideration for using Automotive equipment / device which demand high reliability, kindly contact our sales window correspondents.



- Notes 4. Number of connectors per a magazine case shall be in accordance with the list.  
 5. These connectors shall be on sated in accordance with the multiple quantity on the list.

F-F (10:1)



Part No.	Code No.	Number of connectors
DF3EA- 2P-2V(24)	CL543-0315-0-24	41
DF3EA- 3P-2V(24)	—	34
DF3EA- 4P-2V(24)	CL543-0317-0-24	30
DF3EA- 5P-2V(24)	—	26
DF3EA- 6P-2V(24)	CL543-0319-0-24	23
DF3EA- 7P-2V(24)	CL543-0320-0-24	21
DF3EA- 8P-2V(24)	—	19
DF3EA- 9P-2V(24)	—	18
DF3EA-10P-2V(24)	—	17
DF3EA-11P-2V(24)	—	15
DF3EA-12P-2V(24)	—	14
DF3EA-13P-2V(24)	—	14
DF3EA-14P-2V(24)	—	13
DF3EA-15P-2V(24)	—	12

<b>HRS</b>	DRAWING NO.	EDC-367142-24-00	
	PART NO.	DF3EA-*P-2V(24)	
	CODE NO.	CL543-	① 2/2

## X-ON Electronics

Largest Supplier of Electrical and Electronic Components

*Click to view similar products for [Headers & Wire Housings](#) category:*

*Click to view products by [Hirose](#) manufacturer:*

Other Similar products are found below :

[892-18-020-10-001101](#) [58102-G61-06LF](#) [582553-1](#) [0009485154](#) [009176003701906](#) [0050291907](#) [LY20-4P-DT1-P1E-BR](#) [02.125.8002.8](#)  
[609-3404](#) [61062-3](#) [622-0430](#) [622-3653LF](#) [63453-116](#) [636-1030](#) [636-1427](#) [636-3427](#) [636-4007](#) [641938-9](#) [641991-4](#) [644827-2](#) [65817-010LF](#)  
[65817-015LF](#) [65863-015LF](#) [66207-023LF](#) [67095-007LF](#) [67601157](#) [68648-049](#) [70.362.1628.0](#) [70-4210](#) [70-4226B](#) [70-4853B](#) [707-5020](#) [707-](#)  
[5028](#) [71.350.2428.0](#) [71918-208LF](#) [71961-016LF](#) [733-134](#) [733-162](#) [754199-000](#) [760-3052](#) [787-8014-00](#) [79531-3000](#) [FCN-360C032-B](#) [FCN-](#)  
[367T-T012/H](#) [FCN-723D010/2](#) [80.063.4001.1](#) [800-90-001-10-001000](#) [800-90-010-10-002000](#) [801-43-002-10-013000](#) [801-43-006-10-002000](#)