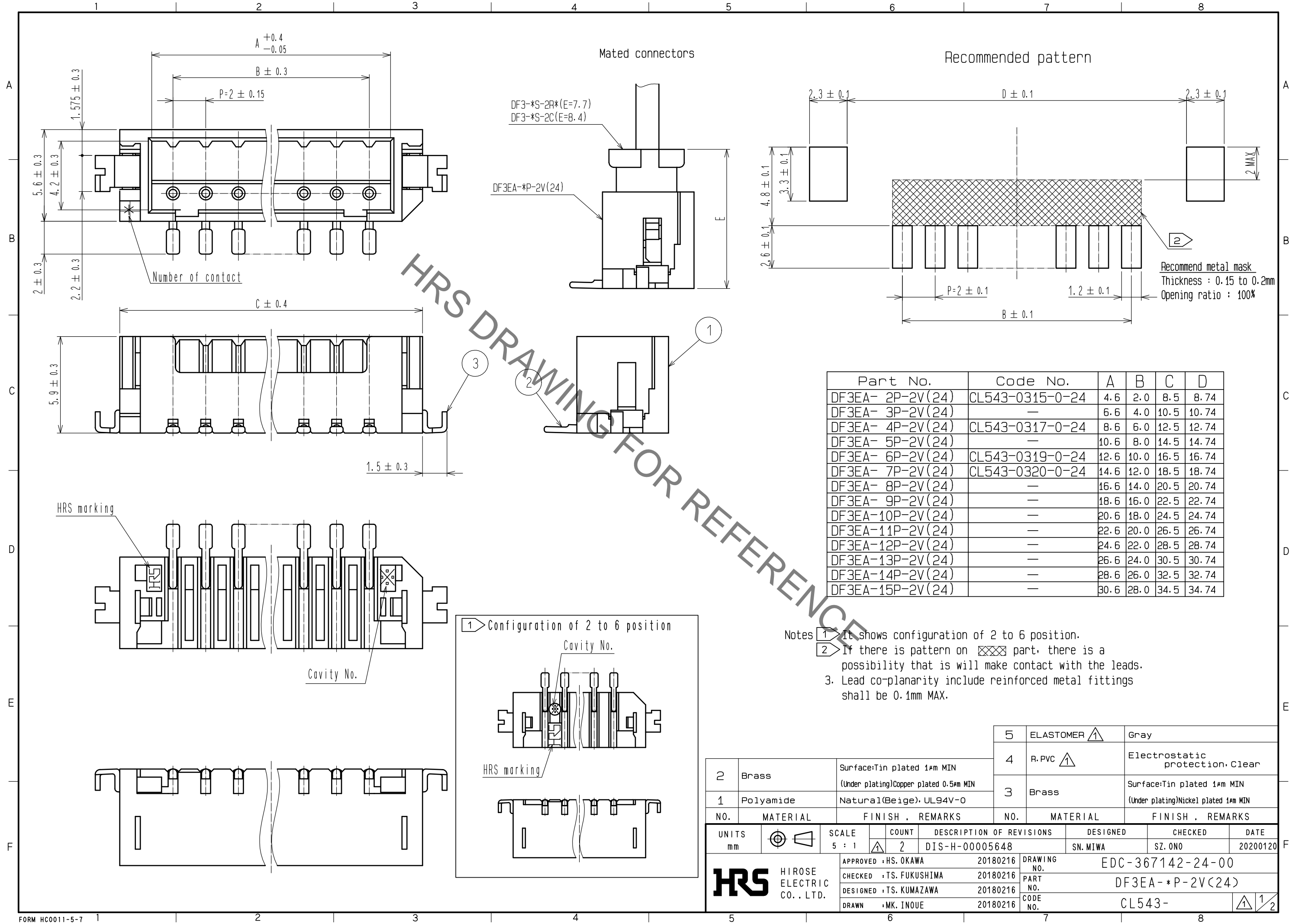


Aug.1.2021 Copyright 2021 HIROSE ELECTRIC CO., LTD. All Rights Reserved.
In case of consideration for using Automotive equipment / device which demand high reliability, kindly contact our sales window correspondents.



| Part No. | Code No. | A | B | C | D |
|------------------|-----------------|------|------|------|-------|
| DF3EA- 2P-2V(24) | CL543-0315-0-24 | 4.6 | 2.0 | 8.5 | 8.74 |
| DF3EA- 3P-2V(24) | — | 6.6 | 4.0 | 10.5 | 10.74 |
| DF3EA- 4P-2V(24) | CL543-0317-0-24 | 8.6 | 6.0 | 12.5 | 12.74 |
| DF3EA- 5P-2V(24) | — | 10.6 | 8.0 | 14.5 | 14.74 |
| DF3EA- 6P-2V(24) | CL543-0319-0-24 | 12.6 | 10.0 | 16.5 | 16.74 |
| DF3EA- 7P-2V(24) | CL543-0320-0-24 | 14.6 | 12.0 | 18.5 | 18.74 |
| DF3EA- 8P-2V(24) | — | 16.6 | 14.0 | 20.5 | 20.74 |
| DF3EA- 9P-2V(24) | — | 18.6 | 16.0 | 22.5 | 22.74 |
| DF3EA-10P-2V(24) | — | 20.6 | 18.0 | 24.5 | 24.74 |
| DF3EA-11P-2V(24) | — | 22.6 | 20.0 | 26.5 | 26.74 |
| DF3EA-12P-2V(24) | — | 24.6 | 22.0 | 28.5 | 28.74 |
| DF3EA-13P-2V(24) | — | 26.6 | 24.0 | 30.5 | 30.74 |
| DF3EA-14P-2V(24) | — | 28.6 | 26.0 | 32.5 | 32.74 |
| DF3EA-15P-2V(24) | — | 30.6 | 28.0 | 34.5 | 34.74 |

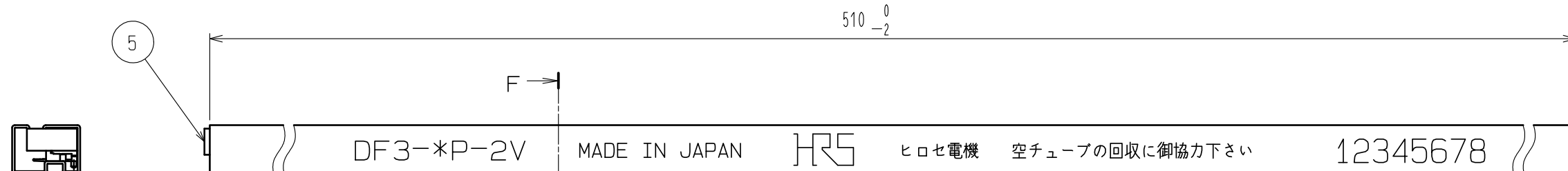
- Notes
- It shows configuration of 2 to 6 position.
 - If there is pattern on part, there is a possibility that it will make contact with the leads.
 - Lead co-planarity include reinforced metal fittings shall be 0.1mm MAX.

| NO. | MATERIAL | FINISH | REMARKS | NO. | MATERIAL | FINISH | REMARKS |
|-----|-----------|--|---------|-----|-----------|--------|--|
| 2 | Brass | Surface: Tin plated 1μm MIN (Under plating) Copper plated 0.5μm MIN | | 5 | ELASTOMER | | Gray |
| 1 | Polyamide | Natural(Beige), UL94V-0 | | 4 | R.PVC | | Electrostatic protection, Clear |
| | | | | 3 | Brass | | Surface: Tin plated 1μm MIN (Under plating) Nickel plated 1μm MIN |

| UNITS | SCALE | COUNT | DESCRIPTION OF REVISIONS | DESIGNED | CHECKED | DATE |
|-------|-------|-------|--------------------------|----------|---------|----------|
| mm | 5 : 1 | 2 | DIS-H-00005648 | SN. MIWA | SZ. ONO | 20200120 |

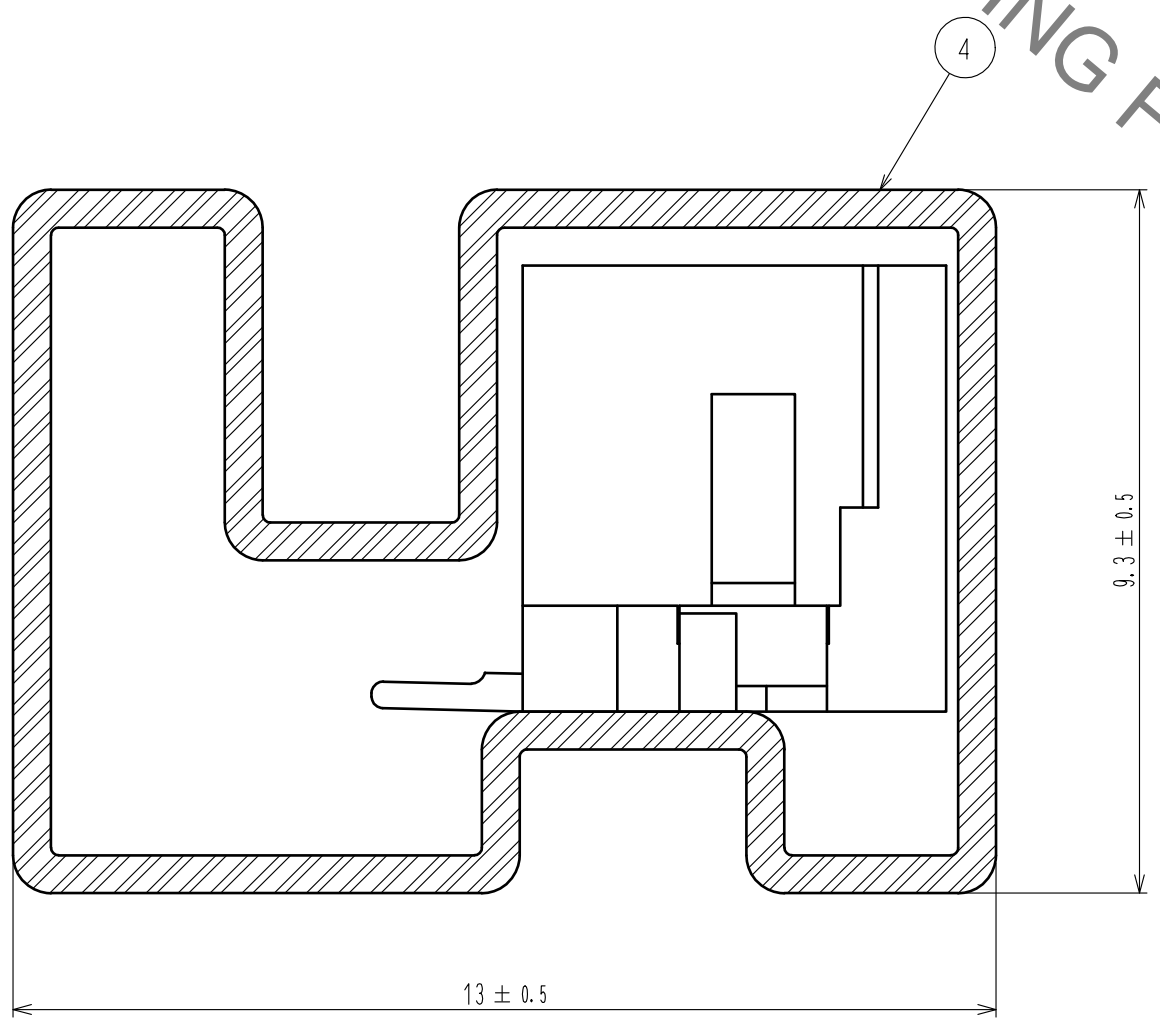
| APPROVED | CHECKED | DESIGNED | DRAWN | DRAWING NO. | PART NO. | CODE NO. |
|-----------|---------------|--------------|-----------|------------------|-----------------|----------|
| HS. OKAWA | TS. FUKUSHIMA | TS. KUMAZAWA | MK. INOUE | 20180216 | 20180216 | 20180216 |
| | | | | EDC-367142-24-00 | DF3EA-*P-2V(24) | CL543- |

Aug.1.2021 Copyright 2021 HIROSE ELECTRIC CO., LTD. All Rights Reserved.
 In case of consideration for using Automotive equipment / device which demand high reliability, kindly contact our sales window correspondents.



Notes 4. Number of connectors per a magazine case shall be in accordance with the list.
 5. These connectors shall be on sated in accordance with the multiple quantity on the list.

F-F (10:1)



| Part No. | Code No. | Number of connectors |
|------------------|-----------------|----------------------|
| DF3EA- 2P-2V(24) | CL543-0315-0-24 | 41 |
| DF3EA- 3P-2V(24) | — | 34 |
| DF3EA- 4P-2V(24) | CL543-0317-0-24 | 30 |
| DF3EA- 5P-2V(24) | — | 26 |
| DF3EA- 6P-2V(24) | CL543-0319-0-24 | 23 |
| DF3EA- 7P-2V(24) | CL543-0320-0-24 | 21 |
| DF3EA- 8P-2V(24) | — | 19 |
| DF3EA- 9P-2V(24) | — | 18 |
| DF3EA-10P-2V(24) | — | 17 |
| DF3EA-11P-2V(24) | — | 15 |
| DF3EA-12P-2V(24) | — | 14 |
| DF3EA-13P-2V(24) | — | 14 |
| DF3EA-14P-2V(24) | — | 13 |
| DF3EA-15P-2V(24) | — | 12 |

| | | | |
|------------|-------------|------------------|-------|
| HRS | DRAWING NO. | EDC-367142-24-00 | |
| | PART NO. | DF3EA-*P-2V(24) | |
| | CODE NO. | CL543- | ① 2/2 |

X-ON Electronics

Largest Supplier of Electrical and Electronic Components

Click to view similar products for [Headers & Wire Housings](#) category:

Click to view products by [Hirose](#) manufacturer:

Other Similar products are found below :

[892-18-020-10-001101](#) [58102-G61-06LF](#) [582553-1](#) [0009485154](#) [009176003701906](#) [0050291907](#) [LY20-4P-DT1-P1E-BR](#) [02.125.8002.8](#)
[609-3404](#) [61062-3](#) [622-0430](#) [622-3653LF](#) [63453-116](#) [636-1030](#) [636-1427](#) [636-3427](#) [636-4007](#) [641938-9](#) [641991-4](#) [644827-2](#) [65817-010LF](#)
[65817-015LF](#) [65863-015LF](#) [66207-023LF](#) [67095-007LF](#) [67601157](#) [68648-049](#) [70.362.1628.0](#) [70-4210](#) [70-4226B](#) [70-4853B](#) [707-5020](#) [707-5028](#) [71.350.2428.0](#) [71918-208LF](#) [71961-016LF](#) [733-134](#) [733-162](#) [754199-000](#) [760-3052](#) [787-8014-00](#) [79531-3000](#) [FCN-360C032-B](#) [FCN-367T-T012/H](#) [FCN-723D010/2](#) [80.063.4001.1](#) [800-90-001-10-001000](#) [800-90-010-10-002000](#) [801-43-002-10-013000](#) [801-43-006-10-002000](#)