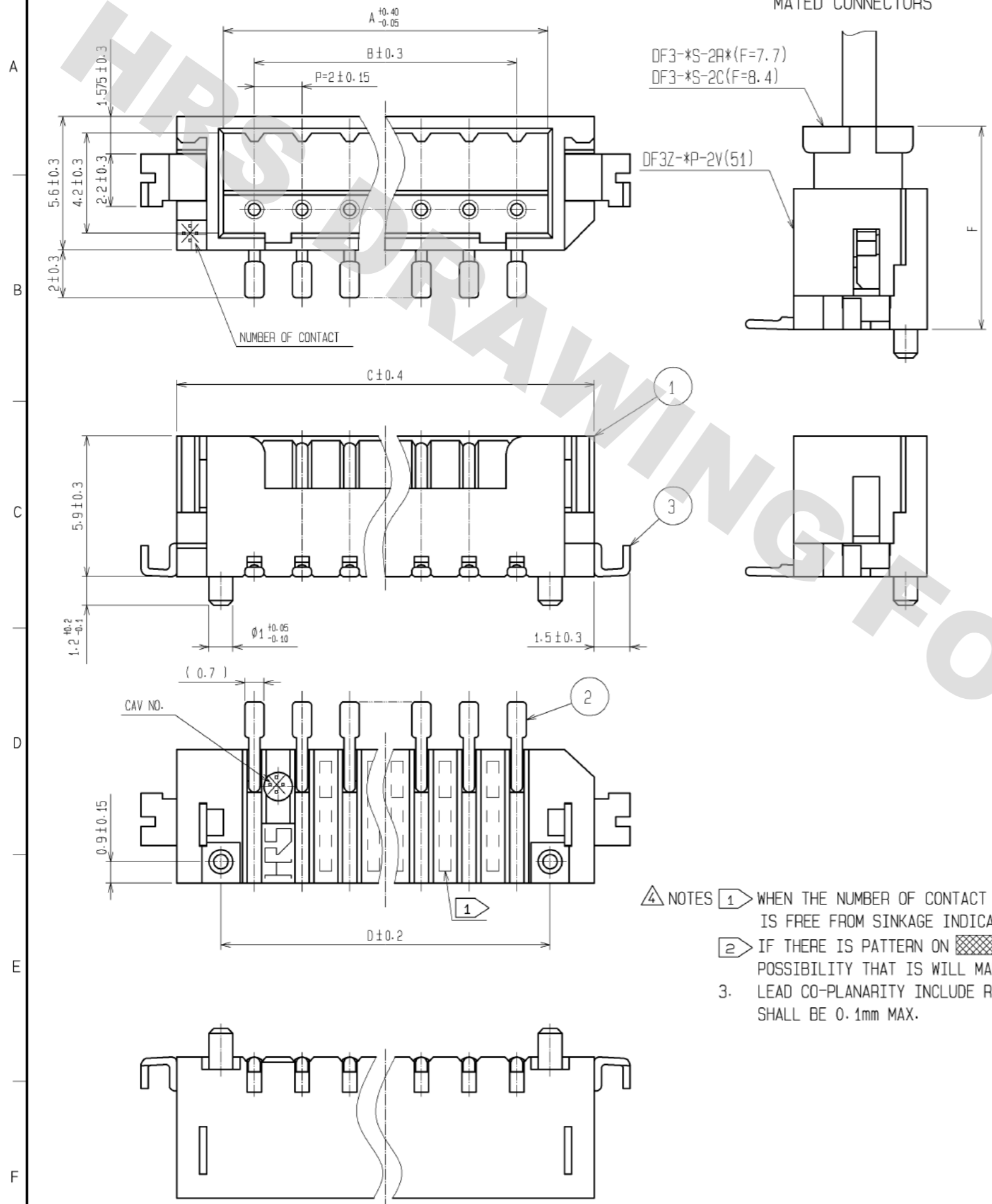
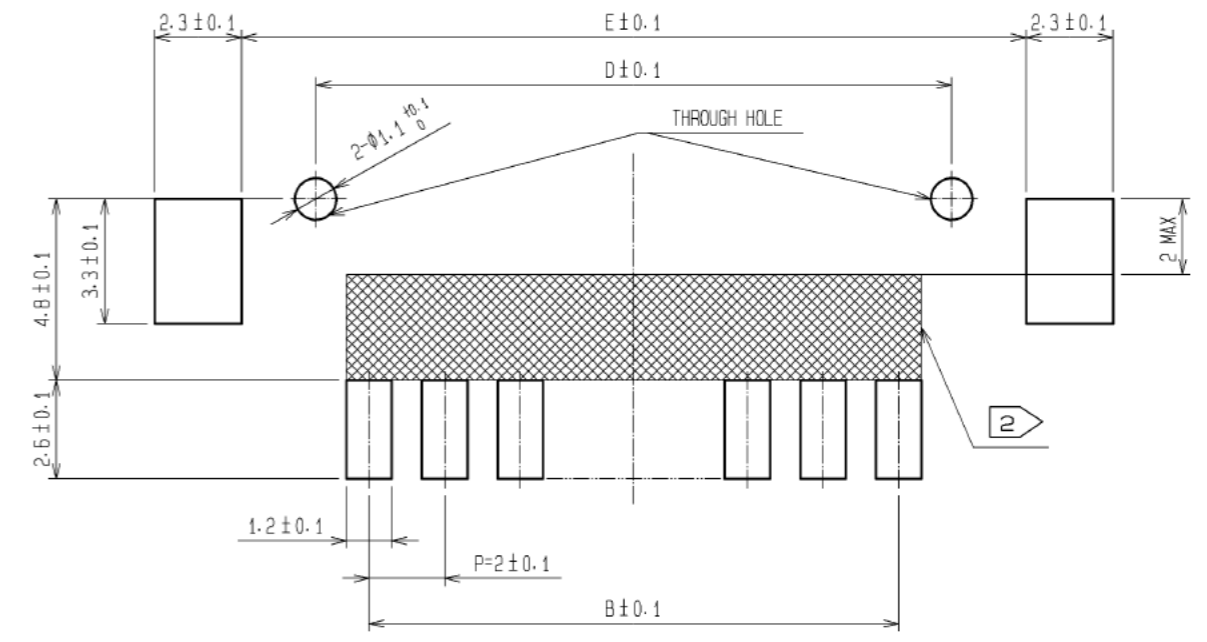


DRAWING FOR REFERENCE: This is subject to change without notice  
05/31/2013

MATED CONNECTORS



RECOMMENDED PATTERN



PART NO.	CODE NO.	A	B	C	D	E
DF3Z- 2P-2V(51)	CL543-1028-4-51	4.6	2.0	8.5	4.8	8.74
DF3Z- 3P-2V(51)	CL543-1029-7-51	6.6	4.0	10.5	6.8	10.74
DF3Z- 4P-2V(51)	CL543-1030-6-51	8.6	6.0	12.5	8.8	12.74
DF3Z- 5P-2V(51)	CL543-1031-9-51	10.6	8.0	14.5	10.8	14.74
DF3Z- 6P-2V(51)	CL543-1032-1-51	12.6	10.0	16.5	12.8	16.74
DF3Z- 7P-2V(51)	CL543-1033-4-51	14.6	12.0	18.5	14.8	18.74
DF3Z- 8P-2V(51)	CL543-1034-7-51	16.6	14.0	20.5	16.8	20.74
DF3Z-10P-2V(51)	CL543-1036-2-51	20.6	18.0	24.5	20.8	24.74
-	-	-	-	-	-	-
-	-	-	-	-	-	-
-	-	-	-	-	-	-
-	-	-	-	-	-	-
-	-	-	-	-	-	-

- 4 NOTES
- 1 WHEN THE NUMBER OF CONTACT IS 2 TO 10, THIS PART IS FREE FROM SINKAGE INDICATING DOTTED LINES.
  - 2 IF THERE IS PATTERN ON PART, THERE IS A POSSIBILITY THAT IS WILL MAKE CONTACT WITH THE LEADS.
  3. LEAD CO-PLANARITY INCLUDE REINFORCED METAL FITTINGS SHALL BE 0.1mm MAX.

NO.	MATERIAL	FINISH . REMARKS	NO.	MATERIAL	FINISH . REMARKS
2	BRASS	SURFACE:GOLD PLATED 0.2 $\mu$ m min (UNDER PLATING)NICKEL PLATED 1 $\mu$ m min	5	POLYESTER	CLEAR(COVER TAPE)
1	POLYAMIDE	BEIGE, UL94V-0	4	PS $\Delta$	CLEAR(EMBOSSD CARRIER TAPE)
			3	BRASS	SURFACE:TIN PLATED 1 $\mu$ m min (UNDER PLATING)NICKEL PLATED 1 $\mu$ m min

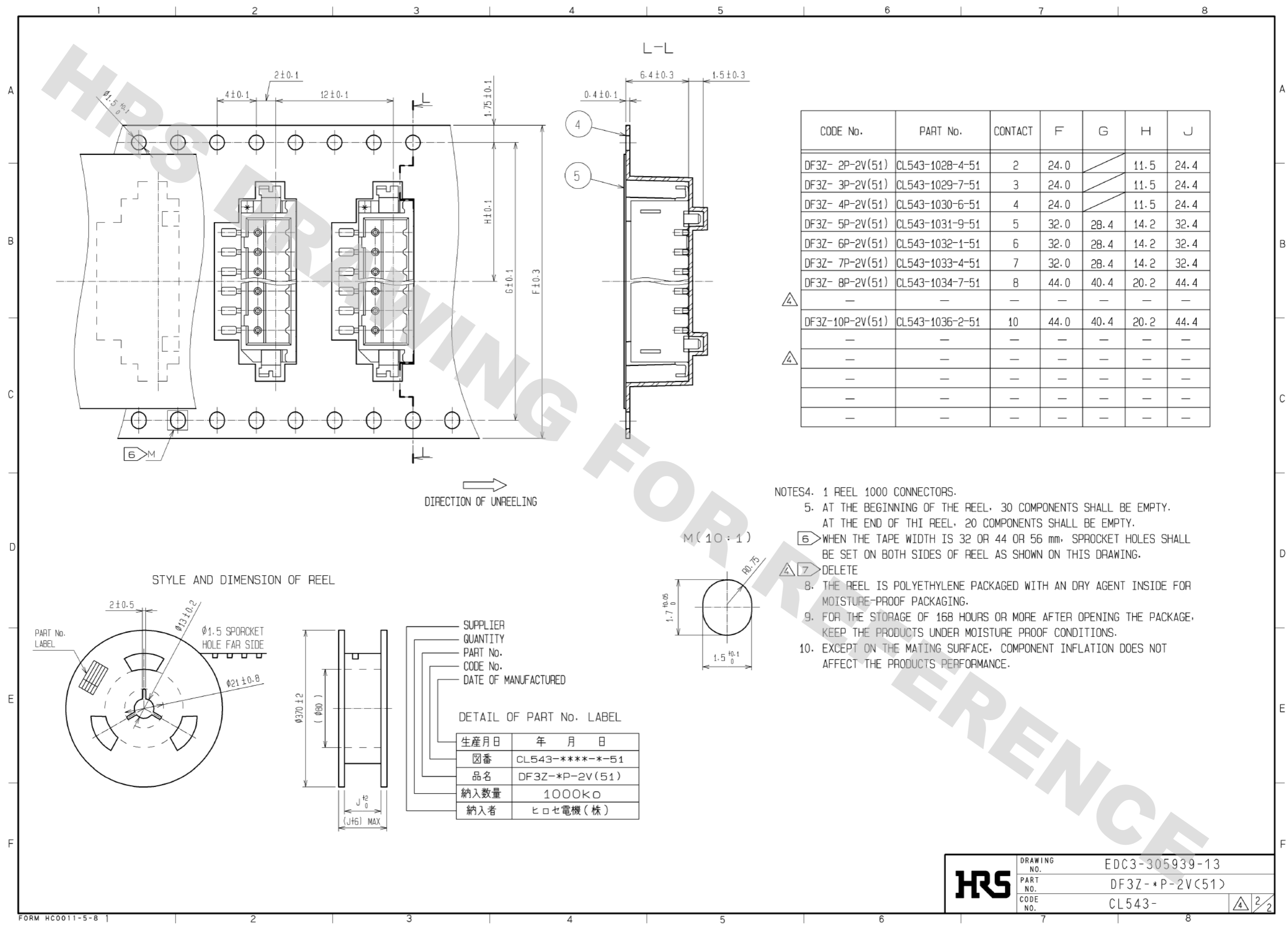
  

UNITS	SCALE	COUNT	DESCRIPTION OF REVISIONS	DESIGNED	CHECKED	DATE
mm	5 : 1	8	DIS-H-007595	MI. SAKIMURA	TS. KUMAZAWA	13. 02. 05

APPROVED	CHECKED	DESIGNED	DRAWN	DRAWING NO.	PART NO.	CODE NO.
KJ. KATAYOSE	KI. AKIYAMA	TH. ARAI	TH. ARAI	EDC3-305939-13	DF3Z-*P-2V(51)	CL543-

DRAWING FOR REFERENCE: This is subject to change without notice  
05/31/2013



CODE No.	PART No.	CONTACT	F	G	H	J
DF3Z- 2P-2V(51)	CL543-1028-4-51	2	24.0		11.5	24.4
DF3Z- 3P-2V(51)	CL543-1029-7-51	3	24.0		11.5	24.4
DF3Z- 4P-2V(51)	CL543-1030-6-51	4	24.0		11.5	24.4
DF3Z- 5P-2V(51)	CL543-1031-9-51	5	32.0	28.4	14.2	32.4
DF3Z- 6P-2V(51)	CL543-1032-1-51	6	32.0	28.4	14.2	32.4
DF3Z- 7P-2V(51)	CL543-1033-4-51	7	32.0	28.4	14.2	32.4
DF3Z- 8P-2V(51)	CL543-1034-7-51	8	44.0	40.4	20.2	44.4
DF3Z-10P-2V(51)	CL543-1036-2-51	10	44.0	40.4	20.2	44.4
-	-	-	-	-	-	-
-	-	-	-	-	-	-
-	-	-	-	-	-	-
-	-	-	-	-	-	-

- NOTES4. 1 REEL 1000 CONNECTORS.  
 5. AT THE BEGINNING OF THE REEL, 30 COMPONENTS SHALL BE EMPTY.  
 AT THE END OF THI REEL, 20 COMPONENTS SHALL BE EMPTY.  
 6. WHEN THE TAPE WIDTH IS 32 OR 44 OR 56 mm, SPROCKET HOLES SHALL BE SET ON BOTH SIDES OF REEL AS SHOWN ON THIS DRAWING.  
 7. DELETE  
 8. THE REEL IS POLYETHYLENE PACKAGED WITH AN DRY AGENT INSIDE FOR MOISTURE-PROOF PACKAGING.  
 9. FOR THE STORAGE OF 168 HOURS OR MORE AFTER OPENING THE PACKAGE, KEEP THE PRODUCTS UNDER MOISTURE PROOF CONDITIONS.  
 10. EXCEPT ON THE MATING SURFACE, COMPONENT INFLATION DOES NOT AFFECT THE PRODUCTS PERFORMANCE.

DETAIL OF PART No. LABEL

生産月日	年 月 日
図番	CL543-****-*-51
品名	DF3Z-*P-2V(51)
納入数量	1000K0
納入者	ヒロセ電機(株)

<b>HRS</b>	DRAWING NO.	EDC3-305939-13
	PART NO.	DF3Z-*P-2V(51)
	CODE NO.	CL543-

## X-ON Electronics

Largest Supplier of Electrical and Electronic Components

*Click to view similar products for [Headers & Wire Housings](#) category:*

*Click to view products by [Hirose](#) manufacturer:*

Other Similar products are found below :

[892-18-020-10-001101](#) [58102-G61-06LF](#) [582553-1](#) [0009485154](#) [009176003701906](#) [0050291907](#) [LY20-4P-DT1-P1E-BR](#) [02.125.8002.8](#)  
[609-3404](#) [61062-3](#) [622-0430](#) [622-3653LF](#) [63453-116](#) [636-1030](#) [636-1427](#) [636-3427](#) [636-4007](#) [641938-9](#) [641991-4](#) [644827-2](#) [65817-010LF](#)  
[65817-015LF](#) [65863-015LF](#) [66207-023LF](#) [67095-007LF](#) [67601157](#) [68648-049](#) [70.362.1628.0](#) [70-4210](#) [70-4226B](#) [70-4853B](#) [707-5020](#) [707-](#)  
[5028](#) [71.350.2428.0](#) [71918-208LF](#) [71961-016LF](#) [733-134](#) [733-162](#) [754199-000](#) [760-3052](#) [787-8014-00](#) [79531-3000](#) [FCN-360C032-B](#) [FCN-](#)  
[367T-T012/H](#) [FCN-723D010/2](#) [80.063.4001.1](#) [800-90-001-10-001000](#) [800-90-010-10-002000](#) [801-43-002-10-013000](#) [801-43-006-10-002000](#)