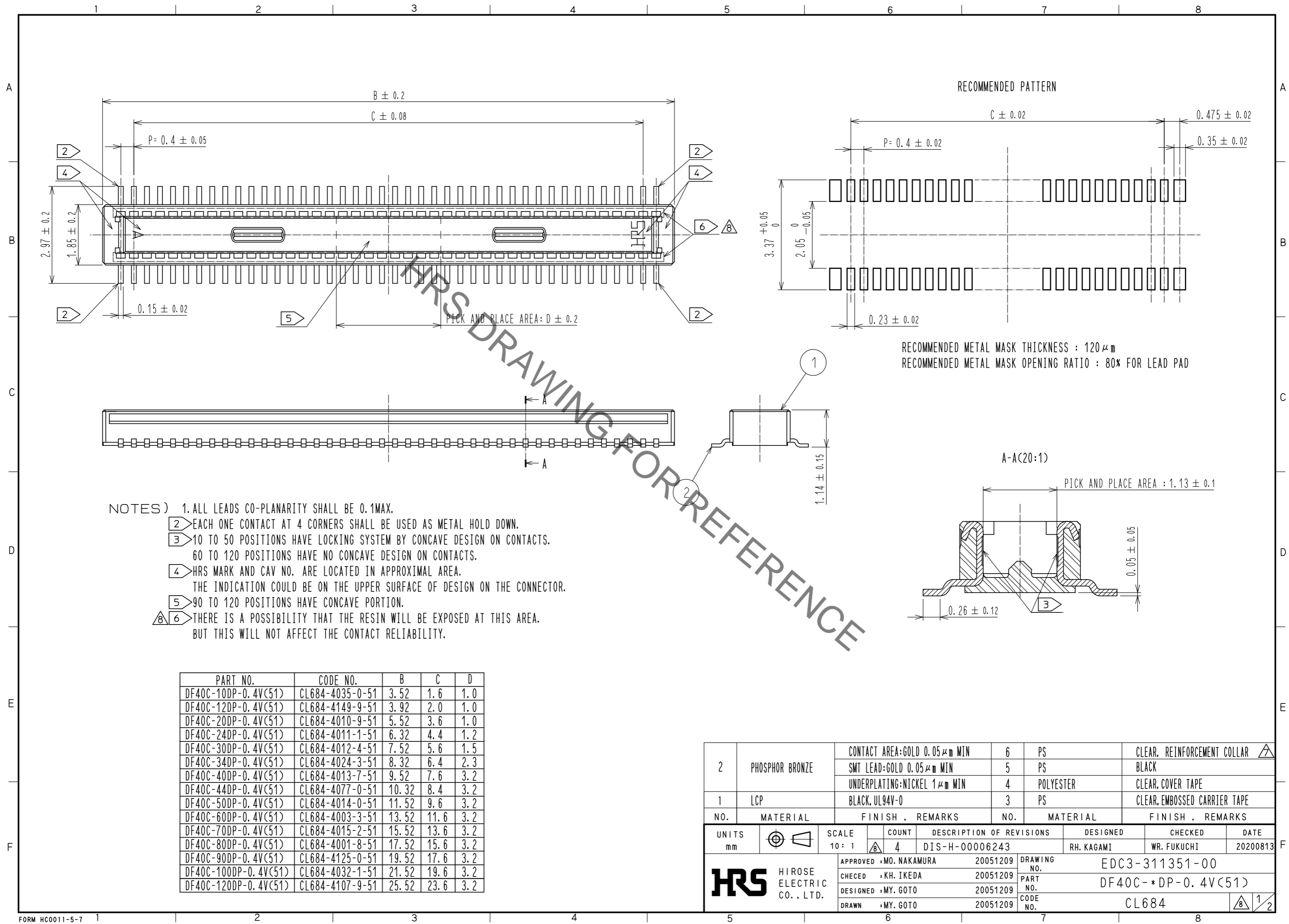


Aug.1.2021 Copyright 2021 HIROSE ELECTRIC CO., LTD. All Rights Reserved.  
In case of consideration for using Automotive equipment / device which demand high reliability, kindly contact our sales window correspondents.



- NOTES)
- 1. ALL LEADS CO-PLANARITY SHALL BE 0.1MAX.
  - 2. EACH ONE CONTACT AT 4 CORNERS SHALL BE USED AS METAL HOLD DOWN.
  - 3. 10 TO 50 POSITIONS HAVE LOCKING SYSTEM BY CONCAVE DESIGN ON CONTACTS.  
60 TO 120 POSITIONS HAVE NO CONCAVE DESIGN ON CONTACTS.
  - 4. HRS MARK AND CAV NO. ARE LOCATED IN APPROXIMAL AREA.  
THE INDICATION COULD BE ON THE UPPER SURFACE OF DESIGN ON THE CONNECTOR.
  - 5. 90 TO 120 POSITIONS HAVE CONCAVE PORTION.
  - 6. THERE IS A POSSIBILITY THAT THE RESIN WILL BE EXPOSED AT THIS AREA.  
BUT THIS WILL NOT AFFECT THE CONTACT RELIABILITY.

PART NO.	CODE NO.	B	C	D
DF40C-10DP-0.4V(51)	CL684-4035-0-51	3.52	1.6	1.0
DF40C-12DP-0.4V(51)	CL684-4149-9-51	3.92	2.0	1.0
DF40C-20DP-0.4V(51)	CL684-4010-9-51	5.52	3.6	1.0
DF40C-24DP-0.4V(51)	CL684-4011-1-51	6.32	4.4	1.2
DF40C-30DP-0.4V(51)	CL684-4012-4-51	7.52	5.6	1.5
DF40C-34DP-0.4V(51)	CL684-4024-3-51	8.32	6.4	2.3
DF40C-40DP-0.4V(51)	CL684-4013-7-51	9.52	7.6	3.2
DF40C-44DP-0.4V(51)	CL684-4077-0-51	10.32	8.4	3.2
DF40C-50DP-0.4V(51)	CL684-4014-0-51	11.52	9.6	3.2
DF40C-60DP-0.4V(51)	CL684-4003-3-51	13.52	11.6	3.2
DF40C-70DP-0.4V(51)	CL684-4015-2-51	15.52	13.6	3.2
DF40C-80DP-0.4V(51)	CL684-4001-8-51	17.52	15.6	3.2
DF40C-90DP-0.4V(51)	CL684-4125-0-51	19.52	17.6	3.2
DF40C-100DP-0.4V(51)	CL684-4032-1-51	21.52	19.6	3.2
DF40C-120DP-0.4V(51)	CL684-4107-9-51	25.52	23.6	3.2

NO.	MATERIAL	FINISH	REMARKS	NO.	MATERIAL	FINISH	REMARKS
2	PHOSPHOR BRONZE	CONTACT AREA:GOLD 0.05 μm MIN	6	PS	CLEAR, REINFORCEMENT COLLAR		
		SMT LEAD:GOLD 0.05 μm MIN	5	PS	BLACK		
		UNDERPLATING:NICKEL 1 μm MIN	4	POLYESTER	CLEAR, COVER TAPE		
1	LCP	BLACK, UL94V-0	3	PS	CLEAR, EMBOSSED CARRIER TAPE		

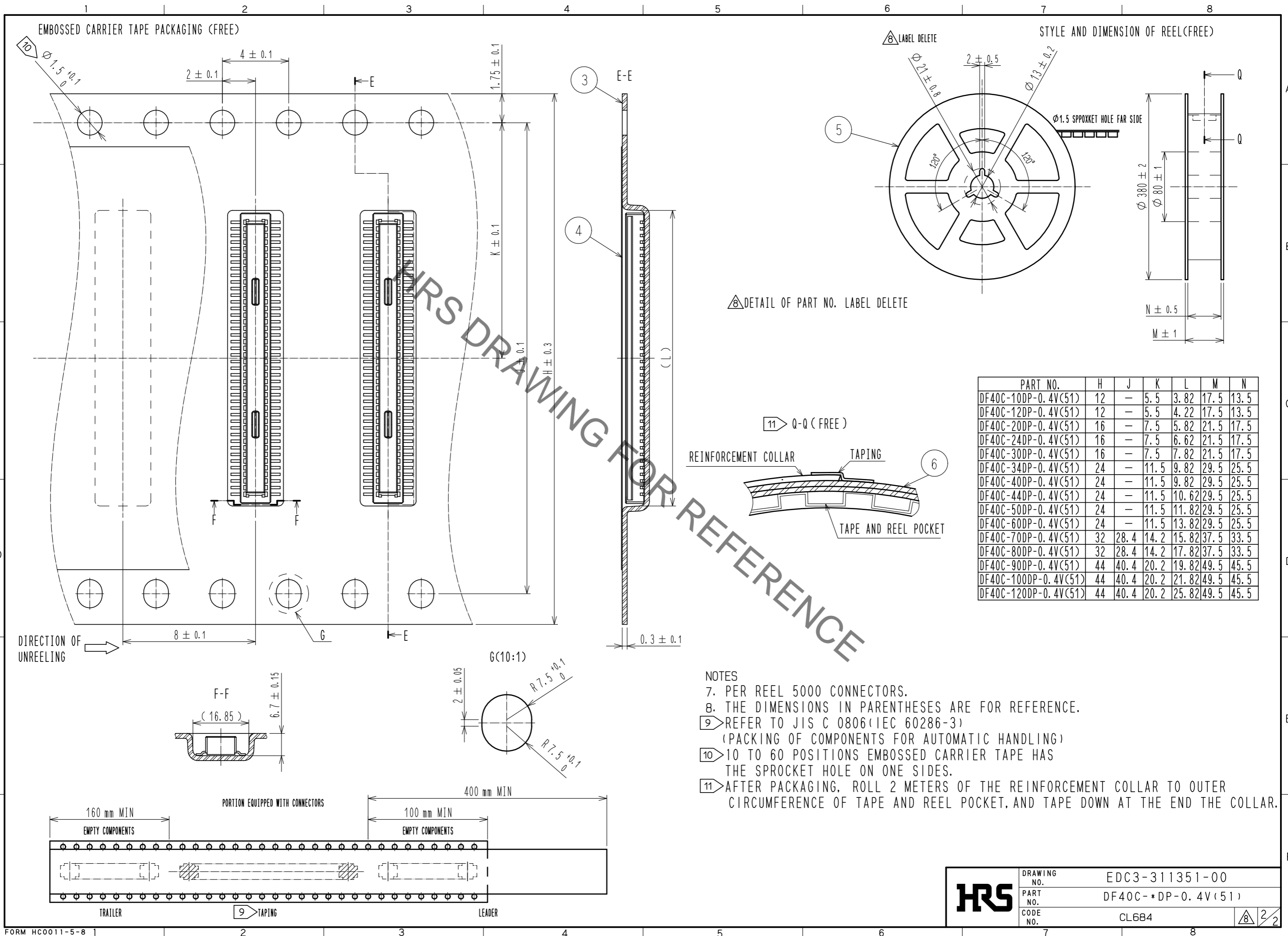
  

UNITS	SCALE	COUNT	DESCRIPTION OF REVISIONS	DESIGNED	CHECKED	DATE
mm	10:1	4	DIS-H-00006243	RH. KAGAMI	WR. FUKUCHI	20200813

APPROVED	MO. NAKAMURA	20051209	DRAWING NO.	EDC3-311351-00
CHECKED	KH. IKEDA	20051209	PART NO.	DF40C-*DP-0.4V(51)
DESIGNED	MY. GOTO	20051209	CODE NO.	CL684
DRAWN	MY. GOTO	20051209		

Aug.1.2021 Copyright 2021 HIROSE ELECTRIC CO., LTD. All Rights Reserved.  
 In case of consideration for using Automotive equipment / device which demand high reliability, kindly contact our sales window correspondents.



PART NO.	H	J	K	L	M	N
DF40C-10DP-0.4V(51)	12	-	5.5	3.82	17.5	13.5
DF40C-12DP-0.4V(51)	12	-	5.5	4.22	17.5	13.5
DF40C-20DP-0.4V(51)	16	-	7.5	5.82	21.5	17.5
DF40C-24DP-0.4V(51)	16	-	7.5	6.62	21.5	17.5
DF40C-30DP-0.4V(51)	16	-	7.5	7.82	21.5	17.5
DF40C-34DP-0.4V(51)	24	-	11.5	9.82	29.5	25.5
DF40C-40DP-0.4V(51)	24	-	11.5	9.82	29.5	25.5
DF40C-44DP-0.4V(51)	24	-	11.5	10.62	29.5	25.5
DF40C-50DP-0.4V(51)	24	-	11.5	11.82	29.5	25.5
DF40C-60DP-0.4V(51)	24	-	11.5	13.82	29.5	25.5
DF40C-70DP-0.4V(51)	32	28.4	14.2	15.82	37.5	33.5
DF40C-80DP-0.4V(51)	32	28.4	14.2	17.82	37.5	33.5
DF40C-90DP-0.4V(51)	44	40.4	20.2	19.82	49.5	45.5
DF40C-100DP-0.4V(51)	44	40.4	20.2	21.82	49.5	45.5
DF40C-120DP-0.4V(51)	44	40.4	20.2	25.82	49.5	45.5

- NOTES
- 7. PER REEL 5000 CONNECTORS.
  - 8. THE DIMENSIONS IN PARENTHESES ARE FOR REFERENCE.
  - 9. REFER TO JIS C 0806 (IEC 60286-3)  
(PACKING OF COMPONENTS FOR AUTOMATIC HANDLING)
  - 10. 10 TO 60 POSITIONS EMBOSSED CARRIER TAPE HAS THE SPROCKET HOLE ON ONE SIDES.
  - 11. AFTER PACKAGING, ROLL 2 METERS OF THE REINFORCEMENT COLLAR TO OUTER CIRCUMFERENCE OF TAPE AND REEL POCKET, AND TAPE DOWN AT THE END THE COLLAR.

<b>HRS</b>	DRAWING NO.	EDC3-311351-00
	PART NO.	DF40C-*DP-0.4V(51)
	CODE NO.	CL684
		2/2

## X-ON Electronics

Largest Supplier of Electrical and Electronic Components

*Click to view similar products for [Board to Board & Mezzanine Connectors](#) category:*

*Click to view products by [Hirose](#) manufacturer:*

Other Similar products are found below :

[589158040000018](#) [MDF7C-18P-2.54DSA\(55\)](#) [FCN-230C068-11](#) [FCN-268F012-G/BD](#) [FCN-268F036-G/BD](#) [FCN-268M012-G/0D](#) [FCN-268M024-G/1D](#) [FCN-723J004/1](#) [MIS-048-01-F-D-DP-K](#) [832-10-034-10-001000](#) [FX4C-80S-1.27DSA](#) [FCN-214Q030-G/0](#) [FCN-234P048-G/0](#) [FCN-235D050-G/C](#) [210-93-314-41-105000](#) [2-22603-0](#) [MDF7-40DP-2.54DSA\(55\)](#) [AXG720047](#) [MIT-114-03-F-D-K](#) [55323-1519](#) [DF33-2P-3.3DSA\(24\)](#) [YFT-20-05-H-03-SB-K](#) [503308-3040](#) [026-6203-PDB](#) [027-6203-PDB](#) [069159702701000](#) [10123981-102LF](#) [101A10019X](#) [55650-0588-C](#) [68682-310LF](#) [68684-306](#) [75140-7012](#) [87471-650](#) [YTW-30-07-H-Q-410-140](#) [FCN-268F024-G0D](#) [10124054-515LF](#) [68685-603](#) [8-1616154-3](#) [MIS-019-01-F-D](#) [FCN-268M024-G/3D](#) [FCN-268M036-G/BD](#) [20021832-06016C1LF](#) [KX15-20KLDL-E1000E](#) [AXE810124](#) [FCN-214J100-G/0](#) [FCN-230C068-E/S](#) [AXE812124](#) [AXE816124](#) [AXE720127](#) [354184](#)