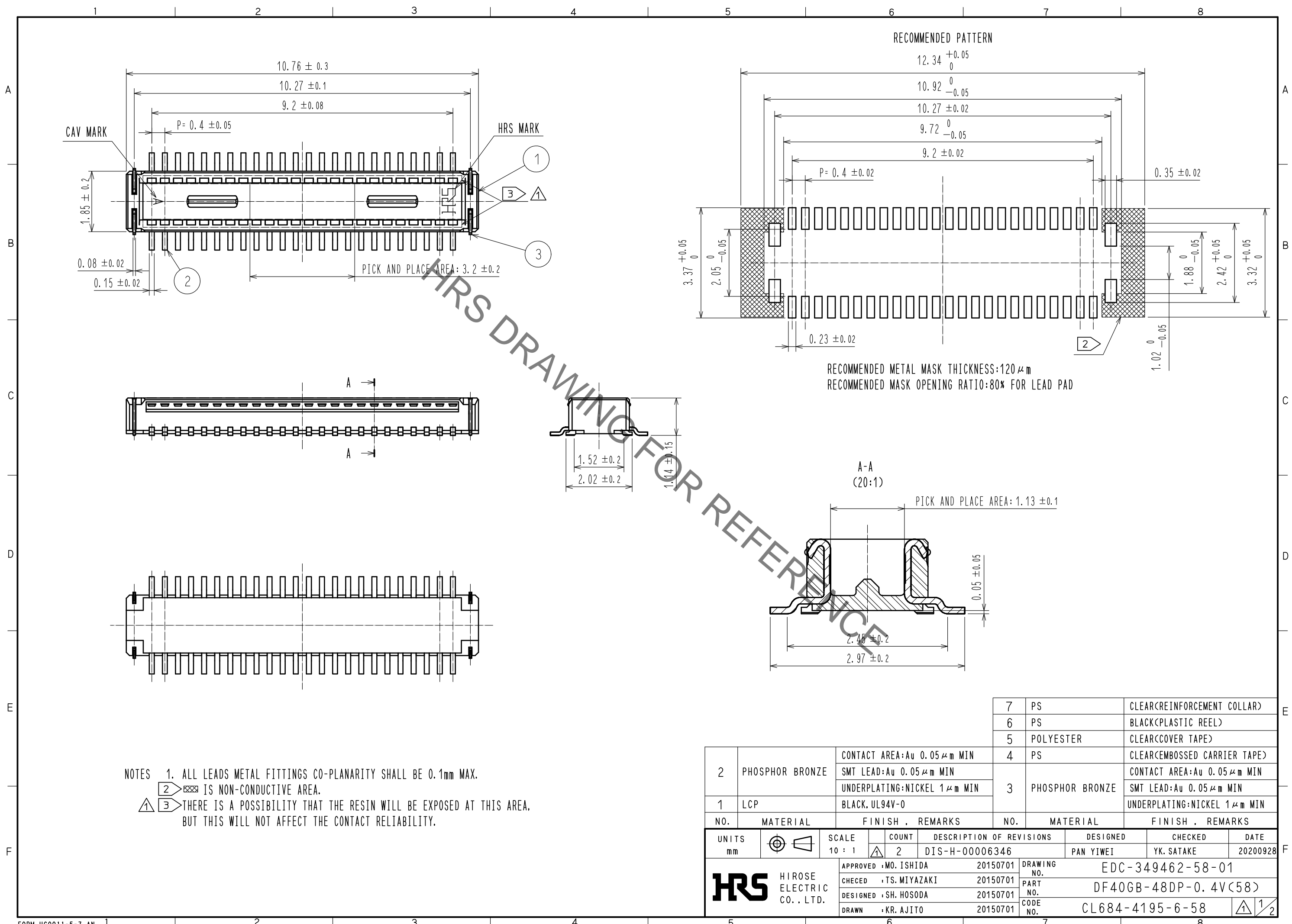


Aug.1.2021 Copyright 2021 HIROSE ELECTRIC CO., LTD. All Rights Reserved.
 In case of consideration for using Automotive equipment / device which demand high reliability, kindly contact our sales window correspondents.



NOTES 1. ALL LEADS METAL FITTINGS CO-PLANARITY SHALL BE 0.1mm MAX.
 2. IS NON-CONDUCTIVE AREA.
 3. THERE IS A POSSIBILITY THAT THE RESIN WILL BE EXPOSED AT THIS AREA.
 BUT THIS WILL NOT AFFECT THE CONTACT RELIABILITY.

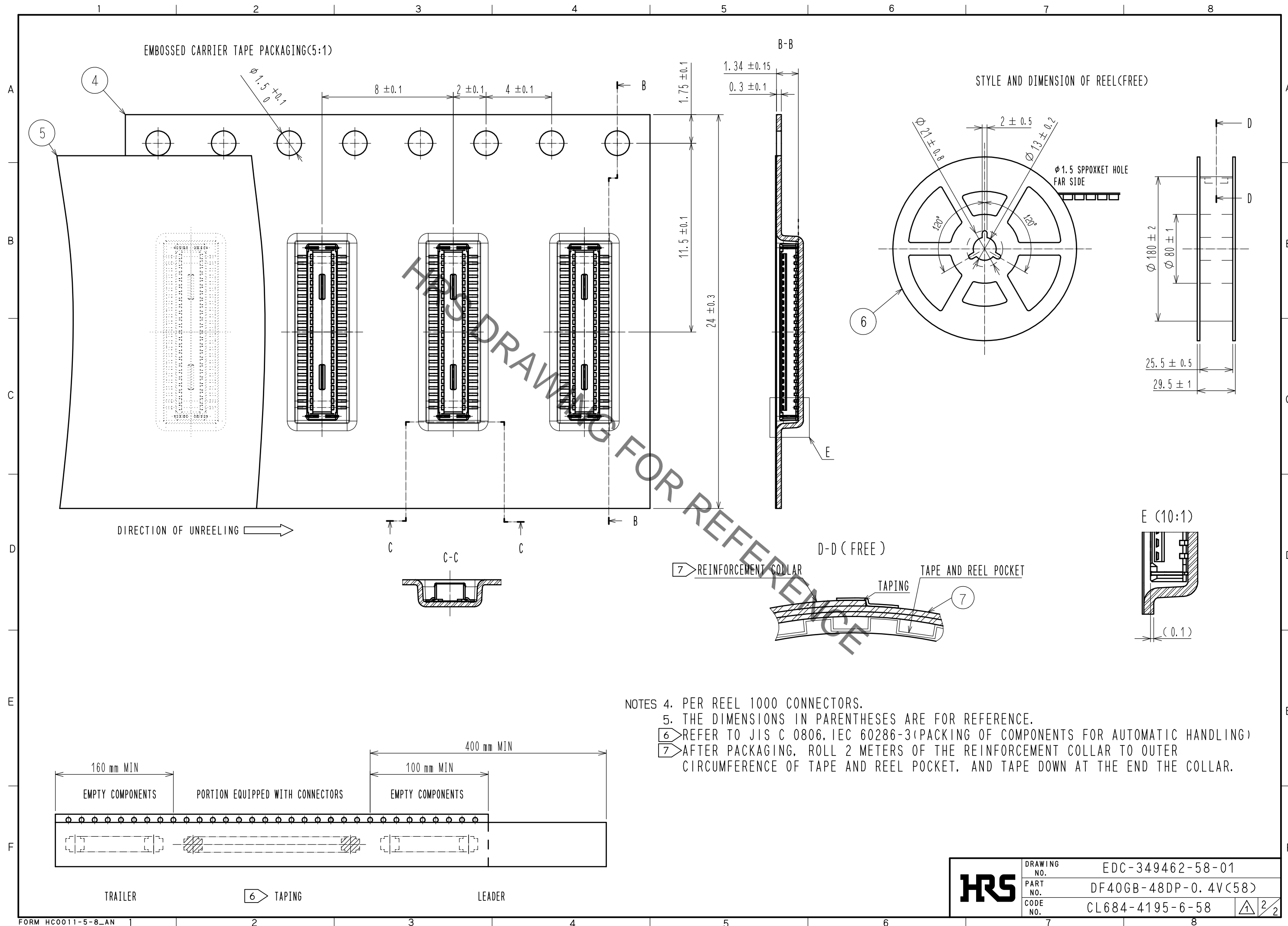
RECOMMENDED METAL MASK THICKNESS: 120 μm
 RECOMMENDED MASK OPENING RATIO: 80% FOR LEAD PAD

7	PS	CLEAR(REINFORCEMENT COLLAR)
6	PS	BLACK(PLASTIC REEL)
5	POLYESTER	CLEAR(COVER TAPE)
4	PS	CLEAR(EMBOSSED CARRIER TAPE)
2	PHOSPHOR BRONZE	CONTACT AREA: Au 0.05 μm MIN
		SMT LEAD: Au 0.05 μm MIN
1	LCP	BLACK, UL94V-0
3	PHOSPHOR BRONZE	CONTACT AREA: Au 0.05 μm MIN
		SMT LEAD: Au 0.05 μm MIN
		UNDERPLATING: NICKEL 1 μm MIN

NO.	MATERIAL	FINISH .	REMARKS	NO.	MATERIAL	FINISH .	REMARKS
2	PHOSPHOR BRONZE		CONTACT AREA: Au 0.05 μm MIN SMT LEAD: Au 0.05 μm MIN	3	PHOSPHOR BRONZE		CONTACT AREA: Au 0.05 μm MIN SMT LEAD: Au 0.05 μm MIN
1	LCP		BLACK, UL94V-0				UNDERPLATING: NICKEL 1 μm MIN

UNITS		SCALE	COUNT	DESCRIPTION OF REVISIONS	DESIGNED	CHECKED	DATE
mm		10 : 1	2	DIS-H-00006346	PAN YIWEI	YK. SATAKE	20200928
HRS HIROSE ELECTRIC CO., LTD.		APPROVED	MO. ISHIDA	20150701	DRAWING NO. EDC-349462-58-01		
		CHECED	TS. MIYAZAKI	20150701	PART NO. DF40GB-48DP-0.4V(58)		
		DESIGNED	SH. HOSODA	20150701	CODE NO. CL684-4195-6-58		
		DRAWN	KR. AJITO	20150701	1/2		

Aug.1.2021 Copyright 2021 HIROSE ELECTRIC CO., LTD. All Rights Reserved.
 In case of consideration for using Automotive equipment / device which demand high reliability, kindly contact our sales window correspondents.



- NOTES
- 4. PER REEL 1000 CONNECTORS.
 - 5. THE DIMENSIONS IN PARENTHESES ARE FOR REFERENCE.
 - 6. REFER TO JIS C 0806, IEC 60286-3(PACKING OF COMPONENTS FOR AUTOMATIC HANDLING)
 - 7. AFTER PACKAGING, ROLL 2 METERS OF THE REINFORCEMENT COLLAR TO OUTER CIRCUMFERENCE OF TAPE AND REEL POCKET, AND TAPE DOWN AT THE END THE COLLAR.

HRS	DRAWING NO.	EDC-349462-58-01
	PART NO.	DF40GB-48DP-0.4V(58)
	CODE NO.	CL684-4195-6-58
		2/2

X-ON Electronics

Largest Supplier of Electrical and Electronic Components

Click to view similar products for [Board to Board & Mezzanine Connectors](#) category:

Click to view products by [Hirose](#) manufacturer:

Other Similar products are found below :

[589158040000018](#) [MDF7C-18P-2.54DSA\(55\)](#) [FCN-230C068-11](#) [FCN-268F012-G/BD](#) [FCN-268F036-G/BD](#) [FCN-268M012-G/0D](#) [FCN-268M024-G/1D](#) [FCN-723J004/1](#) [MIS-048-01-F-D-DP-K](#) [832-10-034-10-001000](#) [FX4C-80S-1.27DSA](#) [FCN-214Q030-G/0](#) [FCN-234P048-G/0](#) [FCN-235D050-G/C](#) [210-93-314-41-105000](#) [2-22603-0](#) [MDF7-40DP-2.54DSA\(55\)](#) [AXG720047](#) [MIT-114-03-F-D-K](#) [55323-1519](#) [DF33-2P-3.3DSA\(24\)](#) [YFT-20-05-H-03-SB-K](#) [503308-3040](#) [026-6203-PDB](#) [027-6203-PDB](#) [069159702701000](#) [10123981-102LF](#) [101A10019X](#) [55650-0588-C](#) [68682-310LF](#) [68684-306](#) [75140-7012](#) [87471-650](#) [YTW-30-07-H-Q-410-140](#) [FCN-268F024-G0D](#) [10124054-515LF](#) [68685-603](#) [8-1616154-3](#) [MIS-019-01-F-D](#) [FCN-268M024-G/3D](#) [FCN-268M036-G/BD](#) [20021832-06016C1LF](#) [KX15-20KLDL-E1000E](#) [AXE810124](#) [FCN-214J100-G/0](#) [FCN-230C068-E/S](#) [AXE812124](#) [AXE816124](#) [AXE720127](#) [354184](#)