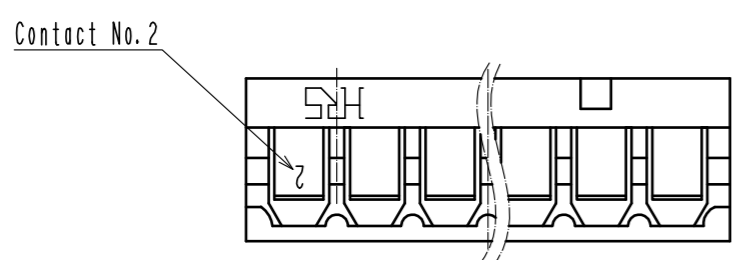
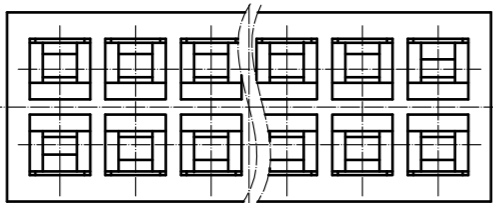
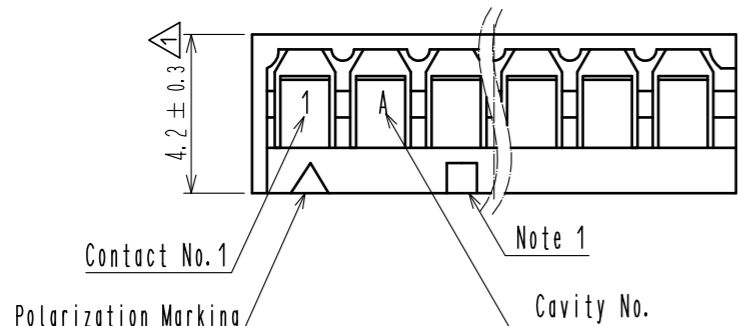
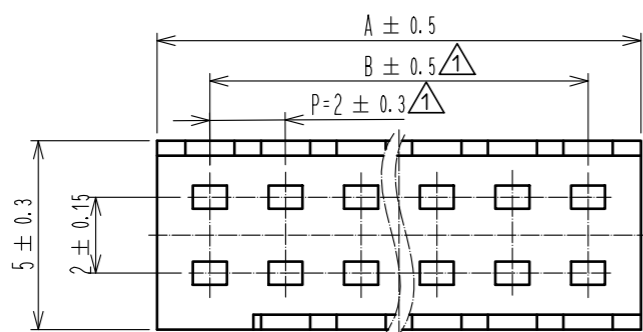
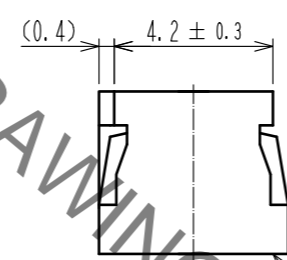


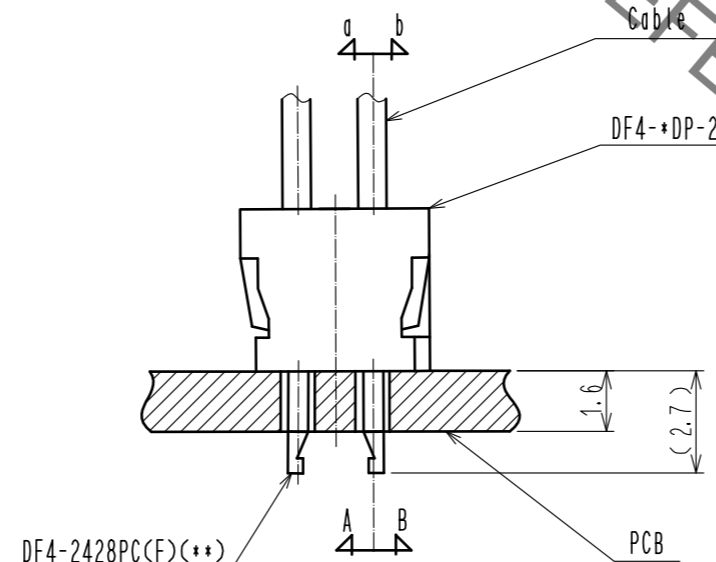
Sep.1.2021 Copyright 2021 HIROSE ELECTRIC CO., LTD. All Rights Reserved.
In case of consideration for using Automotive equipment / device which demand high reliability, kindly contact our sales window correspondents.



HRS DRAWING FOR REFERENCE

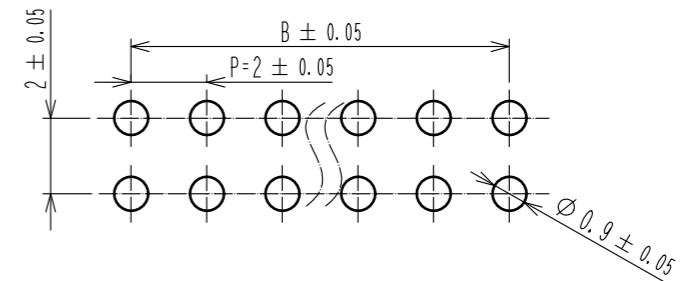


△ Crimp contact insertion drawing



Part No.	Code No.	Number of contact	A	B
DF4- 4DP-2C	544-0078-3	4	4.8	2.0
DF4- 6DP-2C	544-0079-6	6	6.8	4.0
DF4- 8DP-2C	544-0080-5	8	8.8	6.0
DF4-10DP-2C	544-0081-8	10	10.8	8.0
DF4-12DP-2C	544-0082-0	12	12.8	10.0
DF4-14DP-2C	544-0083-3	14	14.8	12.0
DF4-16DP-2C	544-0084-6	16	16.8	14.0
DF4-18DP-2C	544-0085-9	18	18.8	16.0
DF4-20DP-2C	544-0086-1	20	20.8	18.0
DF4-22DP-2C	544-0087-4	22	22.8	20.0
DF4-24DP-2C	544-0088-7	24	24.8	22.0
DF4-26DP-2C	544-0089-0	26	26.8	24.0
DF4-28DP-2C	544-0090-9	28	28.8	26.0
DF4-30DP-2C	544-0091-1	30	30.8	28.0
DF4-32DP-2C	544-0092-4	32	32.8	30.0

Recommended pattern △
(Recommended board thickness t=1.6mm)



- Note 1. Square marks are indicated in relief on the part of following contact No. : 5, 10, 15, 20, 25, 30
 2. Recommended PCB hole diameter 0.9±0.05mm
 3. In case of some thin jacket wires, tips are hard to put together. however, the way of holding these wires makes easier to put them into PCB.
 Ex. When the direction of contact tip is (A), Please hold a wire to the direction(a).

NO.	MATERIAL	FINISH . REMARKS	NO.	MATERIAL	FINISH . REMARKS
1	Polyamide			UL94V-0 (BLACK)	

UNITS	SCALE	COUNT	DESCRIPTION OF REVISIONS	DESIGNED	CHECKED	DATE
mm	5 : 1	6	DIS-H-00004425	HT. SATO	SZ. ONO	20181116

HRS HIROSE ELECTRIC CO., LTD.	APPROVED : KJ. KATAYOSE	20050105	DRAWING NO. EDC-160366-00-00 PART NO. DF4-*DP-2C CODE NO. CL544
	CHECKED : TY. OMA	20050105	
	DESIGNED : IO. DENPOUYA	20050105	
	DRAWN : IO. DENPOUYA	20050105	

X-ON Electronics

Largest Supplier of Electrical and Electronic Components

Click to view similar products for [Headers & Wire Housings](#) category:

Click to view products by [Hirose](#) manufacturer:

Other Similar products are found below :

[892-18-020-10-001101](#) [58102-G61-06LF](#) [582553-1](#) [0009485154](#) [009176003701906](#) [0050291907](#) [LY20-4P-DT1-P1E-BR](#) [02.125.8002.8](#)
[609-3404](#) [61062-3](#) [622-0430](#) [622-3653LF](#) [63453-116](#) [636-1030](#) [636-1427](#) [636-3427](#) [636-4007](#) [641938-9](#) [641991-4](#) [644827-2](#) [65817-010LF](#)
[65817-015LF](#) [65863-015LF](#) [66207-023LF](#) [67095-007LF](#) [67601157](#) [68648-049](#) [70.362.1628.0](#) [70-4210](#) [70-4226B](#) [70-4853B](#) [707-5020](#) [707-](#)
[5028](#) [71.350.2428.0](#) [71918-208LF](#) [71961-016LF](#) [733-134](#) [733-162](#) [754199-000](#) [760-3052](#) [787-8014-00](#) [79531-3000](#) [FCN-360C032-B](#) [FCN-](#)
[367T-T012/H](#) [FCN-723D010/2](#) [80.063.4001.1](#) [800-90-001-10-001000](#) [800-90-010-10-002000](#) [801-43-002-10-013000](#) [801-43-006-10-002000](#)