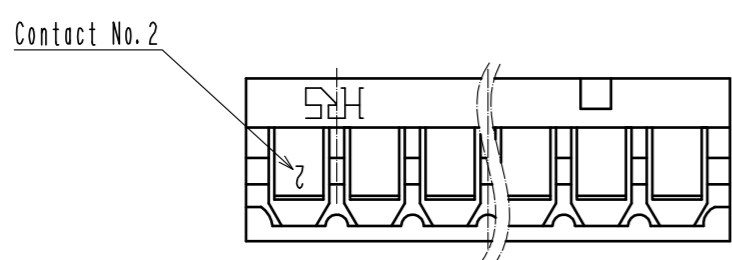
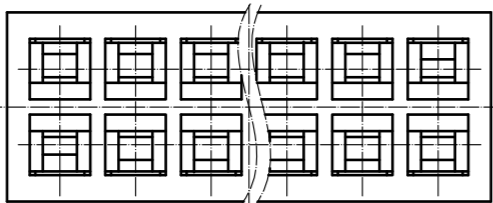
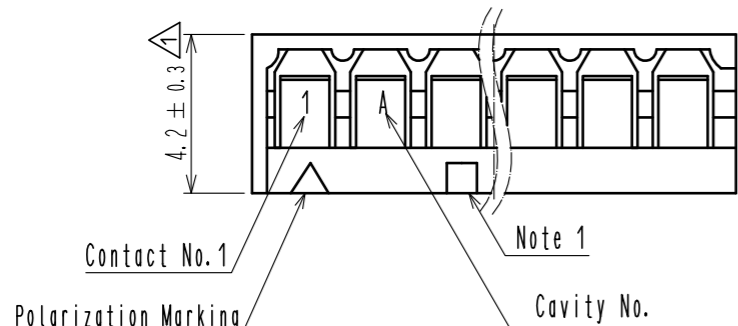
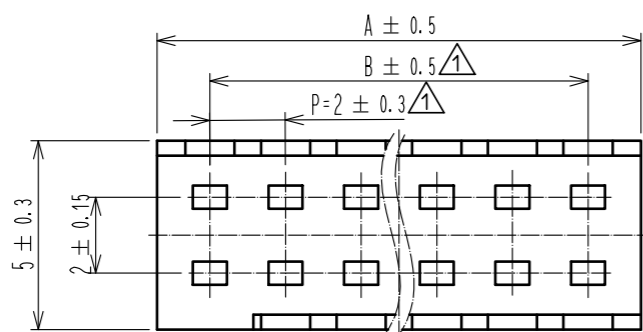
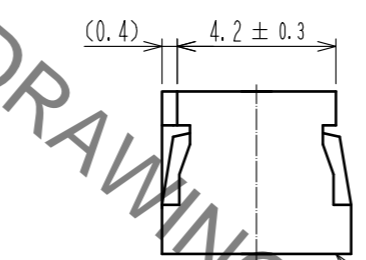


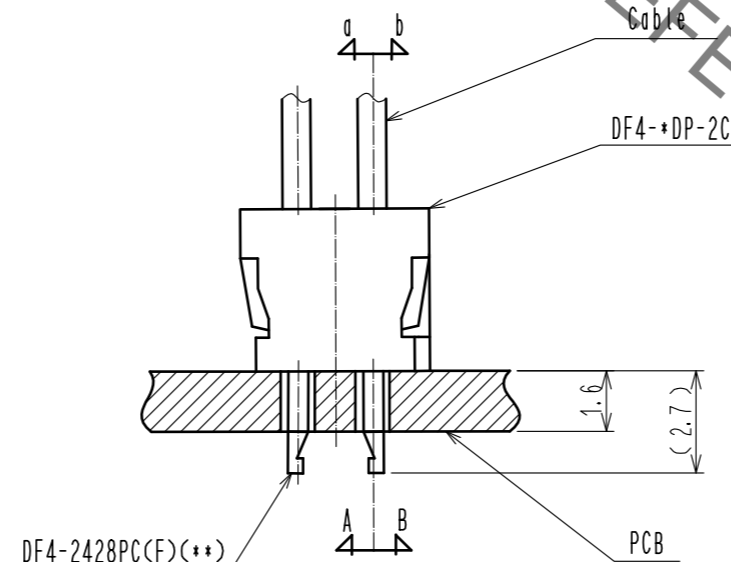
Sep.1.2021 Copyright 2021 HIROSE ELECTRIC CO., LTD. All Rights Reserved.  
In case of consideration for using Automotive equipment / device which demand high reliability, kindly contact our sales window correspondents.



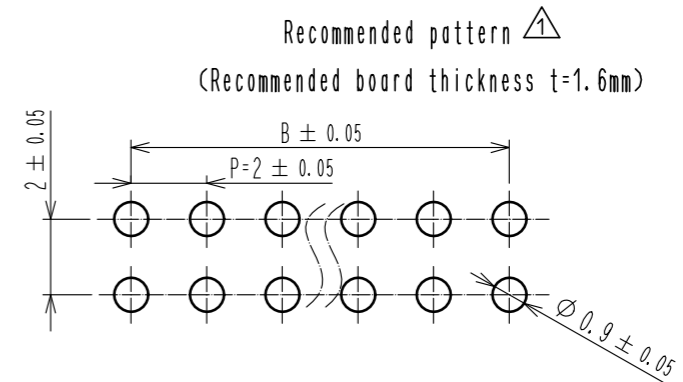
HRS DRAWING FOR REFERENCE



△ Crimp contact insertion drawing



Part No.	Code No.	Number of contact	A	B
DF4- 4DP-2C	544-0078-3	4	4.8	2.0
DF4- 6DP-2C	544-0079-6	6	6.8	4.0
DF4- 8DP-2C	544-0080-5	8	8.8	6.0
DF4-10DP-2C	544-0081-8	10	10.8	8.0
DF4-12DP-2C	544-0082-0	12	12.8	10.0
DF4-14DP-2C	544-0083-3	14	14.8	12.0
DF4-16DP-2C	544-0084-6	16	16.8	14.0
DF4-18DP-2C	544-0085-9	18	18.8	16.0
DF4-20DP-2C	544-0086-1	20	20.8	18.0
DF4-22DP-2C	544-0087-4	22	22.8	20.0
DF4-24DP-2C	544-0088-7	24	24.8	22.0
DF4-26DP-2C	544-0089-0	26	26.8	24.0
DF4-28DP-2C	544-0090-9	28	28.8	26.0
DF4-30DP-2C	544-0091-1	30	30.8	28.0
DF4-32DP-2C	544-0092-4	32	32.8	30.0



- △ Recommended pattern (Recommended board thickness t=1.6mm)
1. Square marks are indicated in relief on the part of following contact No. : 5, 10, 15, 20, 25, 30
  2. Recommended PCB hole diameter 0.9±0.05mm
  3. In case of some thin jacket wires, tips are hard to put together. however, the way of holding these wires makes easier to put them into PCB.
- Ex. When the direction of contact tip is (A), Please hold a wire to the direction(a).

NO.	MATERIAL	FINISH . REMARKS	NO.	MATERIAL	FINISH . REMARKS
			1	Polyamide	UL94V-0 ( BLACK )
UNITS mm		SCALE 5 : 1	COUNT 6	DESCRIPTION OF REVISIONS DIS-H-00004425	DESIGNED HT. SATO
<b>HRS</b> HIROSE ELECTRIC CO., LTD.		APPROVED : KJ. KATAYOSE	20050105	DRAWING NO. EDC-160366-00-00	CHECKED SZ. ONO
		CHECKED : TY. OMA	20050105	PART NO. DF4- * DP-2C	DATE 20181116
		DESIGNED : IO. DENPOUYA	20050105	CODE NO. CL544	
		DRAWN : IO. DENPOUYA	20050105		

## X-ON Electronics

Largest Supplier of Electrical and Electronic Components

*Click to view similar products for [Headers & Wire Housings](#) category:*

*Click to view products by [Hirose](#) manufacturer:*

Other Similar products are found below :

[892-18-020-10-001101](#) [58102-G61-06LF](#) [582553-1](#) [0009485154](#) [009176003701906](#) [0050291907](#) [LY20-4P-DT1-P1E-BR](#) [02.125.8002.8](#)  
[609-3404](#) [61062-3](#) [622-0430](#) [622-3653LF](#) [63453-116](#) [636-1030](#) [636-1427](#) [636-3427](#) [636-4007](#) [641938-9](#) [641991-4](#) [644827-2](#) [65817-010LF](#)  
[65817-015LF](#) [65863-015LF](#) [66207-023LF](#) [67095-007LF](#) [67601157](#) [68648-049](#) [70.362.1628.0](#) [70-4210](#) [70-4226B](#) [70-4853B](#) [707-5020](#) [707-](#)  
[5028](#) [71.350.2428.0](#) [71918-208LF](#) [71961-016LF](#) [733-134](#) [733-162](#) [754199-000](#) [760-3052](#) [787-8014-00](#) [79531-3000](#) [FCN-360C032-B](#) [FCN-](#)  
[367T-T012/H](#) [FCN-723D010/2](#) [80.063.4001.1](#) [800-90-001-10-001000](#) [800-90-010-10-002000](#) [801-43-002-10-013000](#) [801-43-006-10-002000](#)