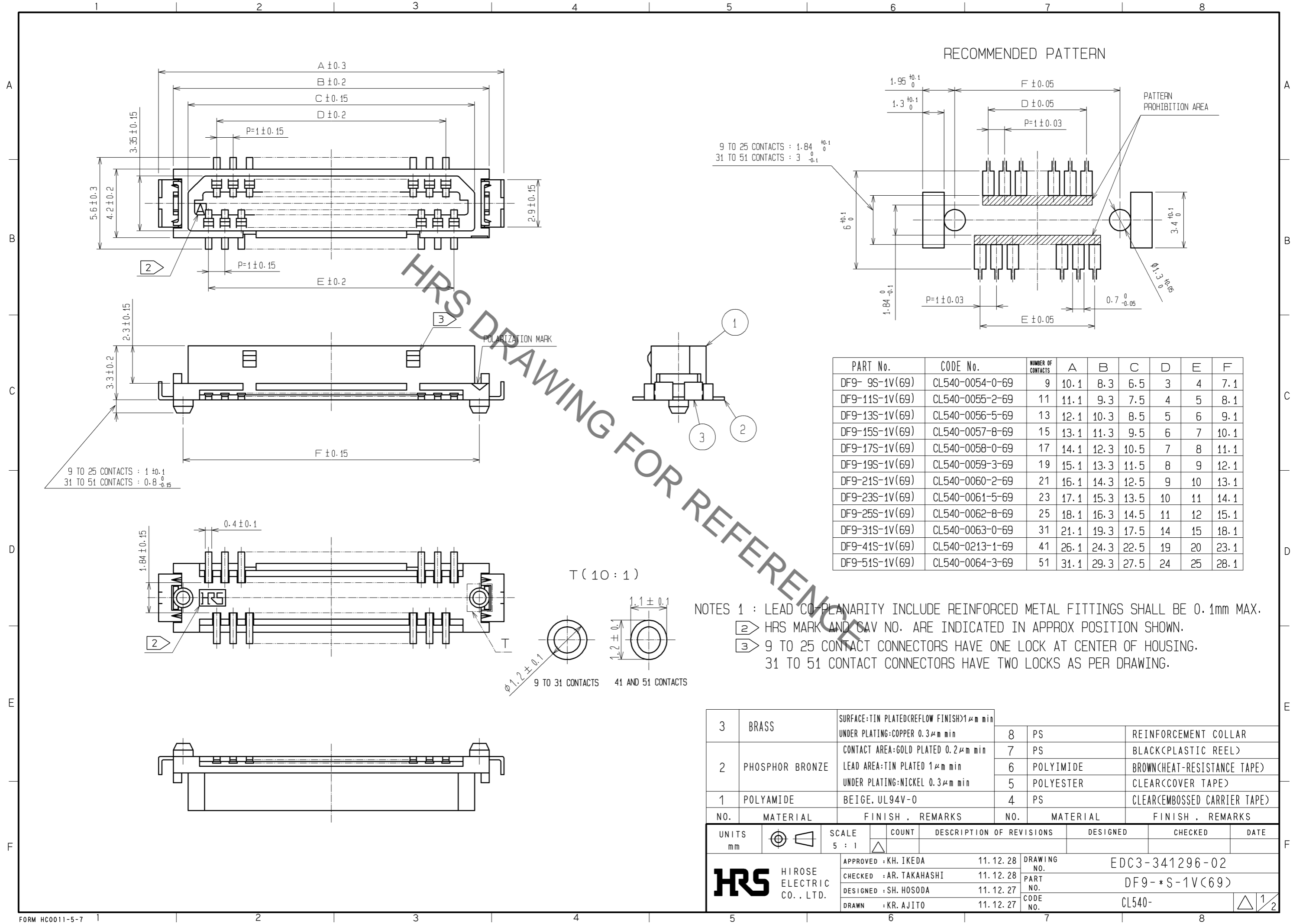


Aug.1.2021 Copyright 2021 HIROSE ELECTRIC CO., LTD. All Rights Reserved.  
In case of consideration for using Automotive equipment / device which demand high reliability, kindly contact our sales window correspondents.



RECOMMENDED PATTERN

9 TO 25 CONTACTS : 1.84<sup>+0.1</sup><sub>0</sub>  
31 TO 51 CONTACTS : 3<sup>+0.1</sup><sub>-0.1</sub>

| PART No.       | CODE No.        | NUMBER OF CONTACTS | A    | B    | C    | D  | E  | F    |
|----------------|-----------------|--------------------|------|------|------|----|----|------|
| DF9-9S-1V(69)  | CL540-0054-0-69 | 9                  | 10.1 | 8.3  | 6.5  | 3  | 4  | 7.1  |
| DF9-11S-1V(69) | CL540-0055-2-69 | 11                 | 11.1 | 9.3  | 7.5  | 4  | 5  | 8.1  |
| DF9-13S-1V(69) | CL540-0056-5-69 | 13                 | 12.1 | 10.3 | 8.5  | 5  | 6  | 9.1  |
| DF9-15S-1V(69) | CL540-0057-8-69 | 15                 | 13.1 | 11.3 | 9.5  | 6  | 7  | 10.1 |
| DF9-17S-1V(69) | CL540-0058-0-69 | 17                 | 14.1 | 12.3 | 10.5 | 7  | 8  | 11.1 |
| DF9-19S-1V(69) | CL540-0059-3-69 | 19                 | 15.1 | 13.3 | 11.5 | 8  | 9  | 12.1 |
| DF9-21S-1V(69) | CL540-0060-2-69 | 21                 | 16.1 | 14.3 | 12.5 | 9  | 10 | 13.1 |
| DF9-23S-1V(69) | CL540-0061-5-69 | 23                 | 17.1 | 15.3 | 13.5 | 10 | 11 | 14.1 |
| DF9-25S-1V(69) | CL540-0062-8-69 | 25                 | 18.1 | 16.3 | 14.5 | 11 | 12 | 15.1 |
| DF9-31S-1V(69) | CL540-0063-0-69 | 31                 | 21.1 | 19.3 | 17.5 | 14 | 15 | 18.1 |
| DF9-41S-1V(69) | CL540-0213-1-69 | 41                 | 26.1 | 24.3 | 22.5 | 19 | 20 | 23.1 |
| DF9-51S-1V(69) | CL540-0064-3-69 | 51                 | 31.1 | 29.3 | 27.5 | 24 | 25 | 28.1 |

NOTES 1 : LEAD CO-PLANARITY INCLUDE REINFORCED METAL FITTINGS SHALL BE 0.1mm MAX.  
 ② HRS MARK AND S.A.V NO. ARE INDICATED IN APPROX POSITION SHOWN.  
 ③ 9 TO 25 CONTACT CONNECTORS HAVE ONE LOCK AT CENTER OF HOUSING.  
 31 TO 51 CONTACT CONNECTORS HAVE TWO LOCKS AS PER DRAWING.

| NO. | MATERIAL        | FINISH . REMARKS   | NO. | MATERIAL  | FINISH . REMARKS             |
|-----|-----------------|--|-----|-----------|------------------------------|
| 3   | BRASS           | SURFACE:TIN PLATED(REFLOW FINISH)1μm min<br>UNDER PLATING:COPPER 0.3μm min                           | 8   | PS        | REINFORCEMENT COLLAR         |
| 2   | PHOSPHOR BRONZE | CONTACT AREA:GOLD PLATED 0.2μm min<br>LEAD AREA:TIN PLATED 1μm min<br>UNDER PLATING:NICKEL 0.3μm min | 7   | PS        | BLACK(PLASTIC REEL)          |
|     |                 |  | 6   | POLYIMIDE | BROWN(HEAT-RESISTANCE TAPE)  |
|     |                 |  | 5   | POLYESTER | CLEAR(COVER TAPE)            |
| 1   | POLYAMIDE       | BEIGE. UL94V-0   | 4   | PS        | CLEAR(EMBOSSED CARRIER TAPE) |

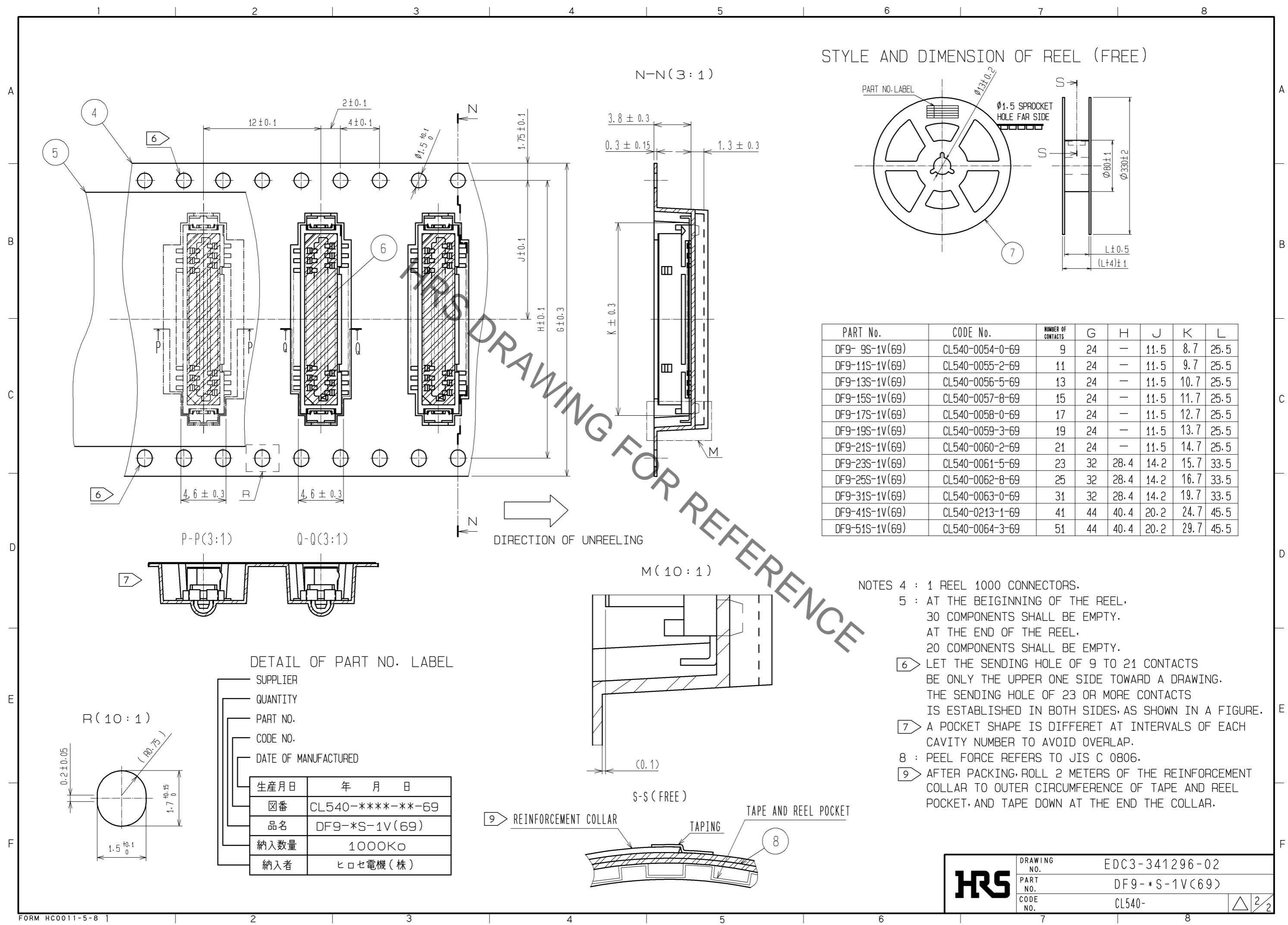
  

| UNITS | SCALE | COUNT | DESCRIPTION OF REVISIONS | DESIGNED | CHECKED | DATE |
|-------|-------|-------|--------------------------|----------|---------|------|
| mm    | 5 : 1 | △     |                          |          |         |      |

|                         |          |             |                |
|-------------------------|----------|-------------|----------------|
| APPROVED : KH. IKEDA    | 11.12.28 | DRAWING NO. | EDC3-341296-02 |
| CHECKED : AR. TAKAHASHI | 11.12.28 | PART NO.    | DF9-*S-1V(69)  |
| DESIGNED : SH. HOSODA   | 11.12.27 | CODE NO.    | CL540-         |
| DRAWN : KR. AJITO       | 11.12.27 |             |                |

Aug.1.2021 Copyright 2021 HIROSE ELECTRIC CO., LTD. All Rights Reserved.  
In case of consideration for using Automotive equipment / device which demand high reliability, kindly contact our sales window correspondents.



| PART No.       | CODE No.        | NUMBER OF CONTACTS | G  | H    | J    | K    | L    |
|----------------|-----------------|--------------------|----|------|------|------|------|
| DF9-9S-1V(69)  | CL540-0054-0-69 | 9                  | 24 | —    | 11.5 | 8.7  | 25.5 |
| DF9-11S-1V(69) | CL540-0055-2-69 | 11                 | 24 | —    | 11.5 | 9.7  | 25.5 |
| DF9-13S-1V(69) | CL540-0056-5-69 | 13                 | 24 | —    | 11.5 | 10.7 | 25.5 |
| DF9-15S-1V(69) | CL540-0057-8-69 | 15                 | 24 | —    | 11.5 | 11.7 | 25.5 |
| DF9-17S-1V(69) | CL540-0058-0-69 | 17                 | 24 | —    | 11.5 | 12.7 | 25.5 |
| DF9-19S-1V(69) | CL540-0059-3-69 | 19                 | 24 | —    | 11.5 | 13.7 | 25.5 |
| DF9-21S-1V(69) | CL540-0060-2-69 | 21                 | 24 | —    | 11.5 | 14.7 | 25.5 |
| DF9-23S-1V(69) | CL540-0061-5-69 | 23                 | 32 | 28.4 | 14.2 | 15.7 | 33.5 |
| DF9-25S-1V(69) | CL540-0062-8-69 | 25                 | 32 | 28.4 | 14.2 | 16.7 | 33.5 |
| DF9-31S-1V(69) | CL540-0063-0-69 | 31                 | 32 | 28.4 | 14.2 | 19.7 | 33.5 |
| DF9-41S-1V(69) | CL540-0213-1-69 | 41                 | 44 | 40.4 | 20.2 | 24.7 | 45.5 |
| DF9-51S-1V(69) | CL540-0064-3-69 | 51                 | 44 | 40.4 | 20.2 | 29.7 | 45.5 |

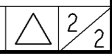
- NOTES 4 : 1 REEL 1000 CONNECTORS.  
 5 : AT THE BEIGINN OF THE REEL, 30 COMPONENTS SHALL BE EMPTY. AT THE END OF THE REEL, 20 COMPONENTS SHALL BE EMPTY.  
 6 LET THE SENDING HOLE OF 9 TO 21 CONTACTS BE ONLY THE UPPER ONE SIDE TOWARD A DRAWING. THE SENDING HOLE OF 23 OR MORE CONTACTS IS ESTABLISHED IN BOTH SIDES, AS SHOWN IN A FIGURE.  
 7 A POCKET SHAPE IS DIFFERET AT INTERVALS OF EACH CAVITY NUMBER TO AVOID OVERLAP.  
 8 : PEEL FORCE REFERS TO JIS C 0806.  
 9 AFTER PACKING, ROLL 2 METERS OF THE REINFORCEMENT COLLAR TO OUTER CIRCUMFERENCE OF TAPE AND REEL POCKET, AND TAPE DOWN AT THE END THE COLLAR.

DETAIL OF PART NO. LABEL

- SUPPLIER
- QUANTITY
- PART NO.
- CODE NO.
- DATE OF MANUFACTURED

|      |                  |
|------|------------------|
| 生産月日 | 年 月 日            |
| 図番   | CL540-****-**-69 |
| 品名   | DF9-*S-1V(69)    |
| 納入数量 | 1000K $\square$  |
| 納入者  | ヒロセ電機(株)         |

|            |             |                |
|------------|-------------|----------------|
| <b>HRS</b> | DRAWING NO. | EDC3-341296-02 |
|            | PART NO.    | DF9-*S-1V(69)  |
|            | CODE NO.    | CL540-         |



## X-ON Electronics

Largest Supplier of Electrical and Electronic Components

*Click to view similar products for [Board to Board & Mezzanine Connectors](#) category:*

*Click to view products by [Hirose](#) manufacturer:*

Other Similar products are found below :

[589158040000018](#) [MDF7C-18P-2.54DSA\(55\)](#) [FCN-230C068-11](#) [FCN-268F012-G/BD](#) [FCN-268F036-G/BD](#) [FCN-268M012-G/0D](#) [FCN-268M024-G/1D](#) [FCN-723J004/1](#) [MIS-048-01-F-D-DP-K](#) [832-10-034-10-001000](#) [FX4C-80S-1.27DSA](#) [FCN-214Q030-G/0](#) [FCN-234P048-G/0](#) [FCN-235D050-G/C](#) [210-93-314-41-105000](#) [2-22603-0](#) [MDF7-40DP-2.54DSA\(55\)](#) [AXG720047](#) [MIT-114-03-F-D-K](#) [55323-1519](#) [DF33-2P-3.3DSA\(24\)](#) [YFT-20-05-H-03-SB-K](#) [503308-3040](#) [026-6203-PDB](#) [027-6203-PDB](#) [069159702701000](#) [10123981-102LF](#) [101A10019X](#) [55650-0588-C](#) [68682-310LF](#) [68684-306](#) [75140-7012](#) [87471-650](#) [YTW-30-07-H-Q-410-140](#) [FCN-268F024-G0D](#) [10124054-515LF](#) [68685-603](#) [8-1616154-3](#) [MIS-019-01-F-D](#) [FCN-268M024-G/3D](#) [FCN-268M036-G/BD](#) [20021832-06016C1LF](#) [KX15-20KLDL-E1000E](#) [AXE810124](#) [FCN-214J100-G/0](#) [FCN-230C068-E/S](#) [AXE812124](#) [AXE816124](#) [AXE720127](#) [354184](#)