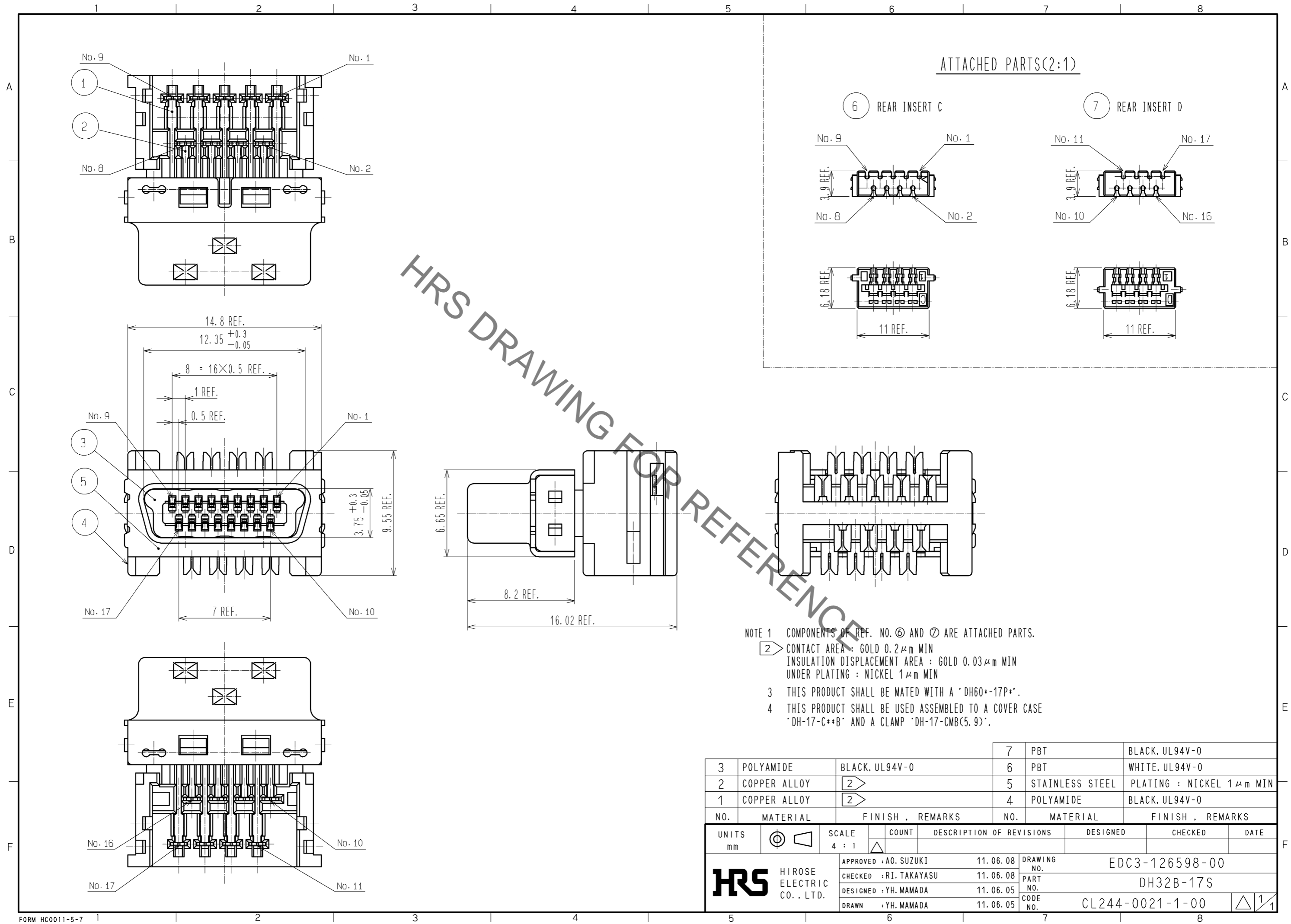


Sep.1.2021 Copyright 2021 HIROSE ELECTRIC CO., LTD. All Rights Reserved.
In case of consideration for using Automotive equipment / device which demand high reliability, kindly contact our sales window correspondents.

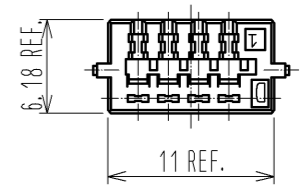
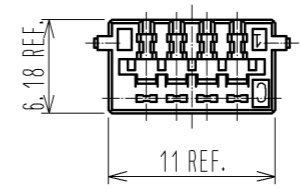
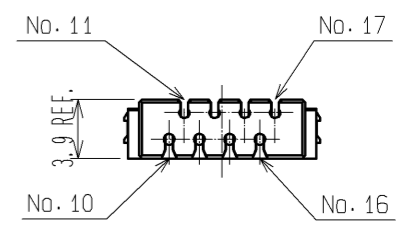
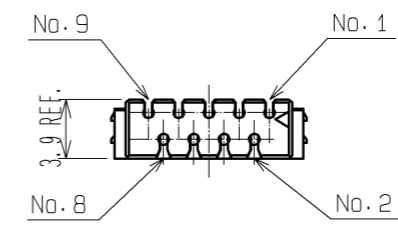


HRS DRAWING FOR REFERENCE

ATTACHED PARTS(2:1)

6 REAR INSERT C

7 REAR INSERT D



- NOTE 1 COMPONENTS OF REF. NO. ⑥ AND ⑦ ARE ATTACHED PARTS.
 ② CONTACT AREA : GOLD 0.2μm MIN
 INSULATION DISPLACEMENT AREA : GOLD 0.03μm MIN
 UNDER PLATING : NICKEL 1μm MIN
 3 THIS PRODUCT SHALL BE MATED WITH A 'DH60*-17P*'.
 4 THIS PRODUCT SHALL BE USED ASSEMBLED TO A COVER CASE 'DH-17-C**B' AND A CLAMP 'DH-17-CMB(5.9)'.

3	POLYAMIDE	BLACK, UL94V-0	7	PBT	BLACK, UL94V-0
2	COPPER ALLOY	②	6	PBT	WHITE, UL94V-0
1	COPPER ALLOY	②	5	STAINLESS STEEL	PLATING : NICKEL 1μm MIN
			4	POLYAMIDE	BLACK, UL94V-0
NO.	MATERIAL	FINISH . REMARKS	NO.	MATERIAL	FINISH . REMARKS
UNITS mm		SCALE 4 : 1	COUNT		DESCRIPTION OF REVISIONS
DESIGNED		CHECKED		DATE	
APPROVED : A0. SUZUKI			11. 06. 08		
CHECKED : RI. TAKAYASU			11. 06. 08		
DESIGNED : YH. MAMADA			11. 06. 05		
DRAWN : YH. MAMADA			11. 06. 05		
DRAWING NO.				EDC3-126598-00	
PART NO.				DH32B-17S	
CODE NO.				CL244-0021-1-00	
				1/1	

X-ON Electronics

Largest Supplier of Electrical and Electronic Components

Click to view similar products for [I/O Connectors](#) category:

Click to view products by [Hirose](#) manufacturer:

Other Similar products are found below :

[571763P](#) [58098-0628](#) [72.250.1628.2](#) [72.250.2428.2](#) [74720-0505](#) [76.350.0729.0](#) [76871-1403](#) [FCN-244F080-G/1](#) [FCN-260A9920](#) [PCR-E36PM](#) [PCS-XE26MA+](#) [G38A71314B](#) [1571250010](#) [157-22500-3](#) [MS3471L14-19P L/C](#) [192991-0703](#) [172501-4002](#) [172501-6002](#) [FCN-260C008-A/L0](#) [FCN-260C024-AL0](#) [FCN-261Z008](#) [2000314-1](#) [200331-1](#) [PCR-E36FC+](#) [PCS-E28FS+](#) [PCS-XE26SLFD+](#) [PCS-XE26SLFDT+](#) [G730VID08BDC24](#) [U90B2054081210](#) [38113800006](#) [DP3AR020WQ1R200](#) [Z4.102.0680.0](#) [500-1040](#) [500-1052](#) [500-1054](#) [ZP-4008-66L](#) [0709821002](#) [DX40-20P\(55\)](#) [5554841-1](#) [MS3474W18-8P-LC*](#) [U90B3054061110](#) [U65-E04-4020](#) [ZPF000000000097891](#) [747360449](#) [10099439-003C-TRLF](#) [10137239-0021LF](#) [E9320-001-01](#) [10137239-0011LF](#) [70289-001LF](#) [70.060.1028.0](#)