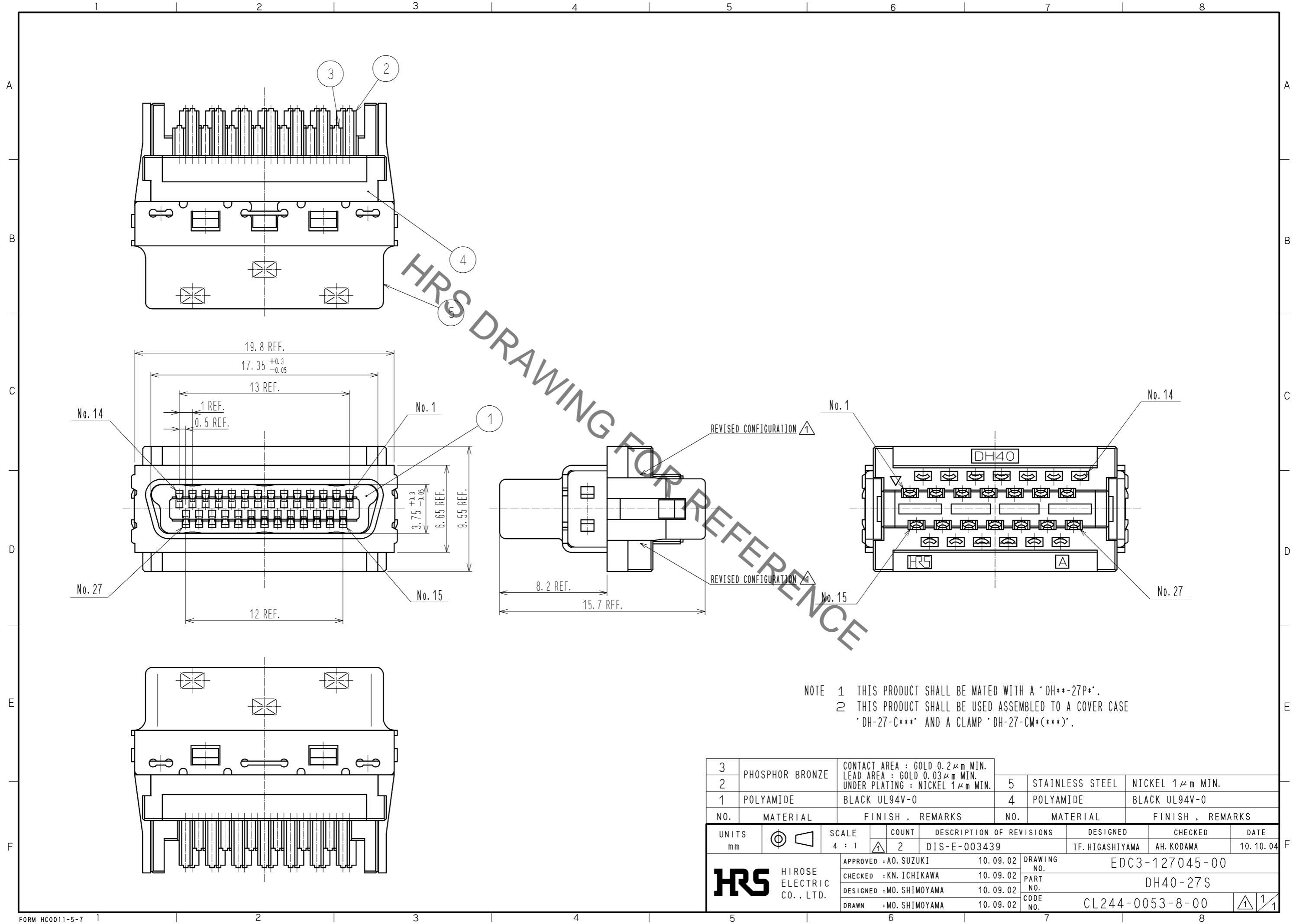


Sep.1.2021 Copyright 2021 HIROSE ELECTRIC CO., LTD. All Rights Reserved.
 In case of consideration for using Automotive equipment / device which demand high reliability, kindly contact our sales window correspondents.



NOTE 1 THIS PRODUCT SHALL BE MATED WITH A 'DH**-27P*'.
 2 THIS PRODUCT SHALL BE USED ASSEMBLED TO A COVER CASE 'DH-27-C***' AND A CLAMP 'DH-27-CM*(***)'.

3	PHOSPHOR BRONZE	CONTACT AREA : GOLD 0.2 μm MIN. LEAD AREA : GOLD 0.03 μm MIN. UNDER PLATING : NICKEL 1 μm MIN.	5	STAINLESS STEEL	NICKEL 1 μm MIN.
2			4	POLYAMIDE	BLACK UL94V-0
1	POLYAMIDE	BLACK UL94V-0			
NO.	MATERIAL	FINISH . REMARKS	NO.	MATERIAL	FINISH . REMARKS
UNITS	mm	SCALE	4 : 1	COUNT	2
DESCRIPTION OF REVISIONS			DESIGNED	TF. HIGASHIYAMA	CHECKED
DIS-E-003439			DATE	10.10.04	
APPROVED : A0. SUZUKI			10.09.02	DRAWING NO. EDC3-127045-00	
CHECKED : KN. ICHIKAWA			10.09.02	PART NO. DH40-27S	
DESIGNED : MO. SHIMOYAMA			10.09.02	CODE NO. CL244-0053-8-00	
DRAWN : MO. SHIMOYAMA			10.09.02	1/1	

X-ON Electronics

Largest Supplier of Electrical and Electronic Components

Click to view similar products for [I/O Connectors](#) category:

Click to view products by [Hirose](#) manufacturer:

Other Similar products are found below :

[571763P](#) [58098-0628](#) [72.250.1628.2](#) [72.250.2428.2](#) [74720-0505](#) [76.350.0729.0](#) [76871-1403](#) [FCN-244F080-G/1](#) [FCN-260A9920](#) [PCR-E36PM](#) [PCS-XE26MA+](#) [G38A71314B](#) [1571250010](#) [157-22500-3](#) [MS3471L14-19P L/C](#) [192991-0703](#) [172501-4002](#) [172501-6002](#) [FCN-260C008-A/L0](#) [FCN-260C024-AL0](#) [FCN-261Z008](#) [2000314-1](#) [200331-1](#) [PCR-E36FC+](#) [PCS-E28FS+](#) [PCS-XE26SLFD+](#) [PCS-XE26SLFDT+](#) [G730VID08BDC24](#) [U90B2054081210](#) [38113800006](#) [DP3AR020WQ1R200](#) [Z4.102.0680.0](#) [500-1040](#) [500-1052](#) [500-1054](#) [ZP-4008-66L](#) [0709821002](#) [DX40-20P\(55\)](#) [5554841-1](#) [MS3474W18-8P-LC*](#) [U90B3054061110](#) [U65-E04-4020](#) [ZPF000000000097891](#) [747360449](#) [10099439-003C-TRLF](#) [10137239-0021LF](#) [E9320-001-01](#) [10137239-0011LF](#) [70289-001LF](#) [70.060.1028.0](#)