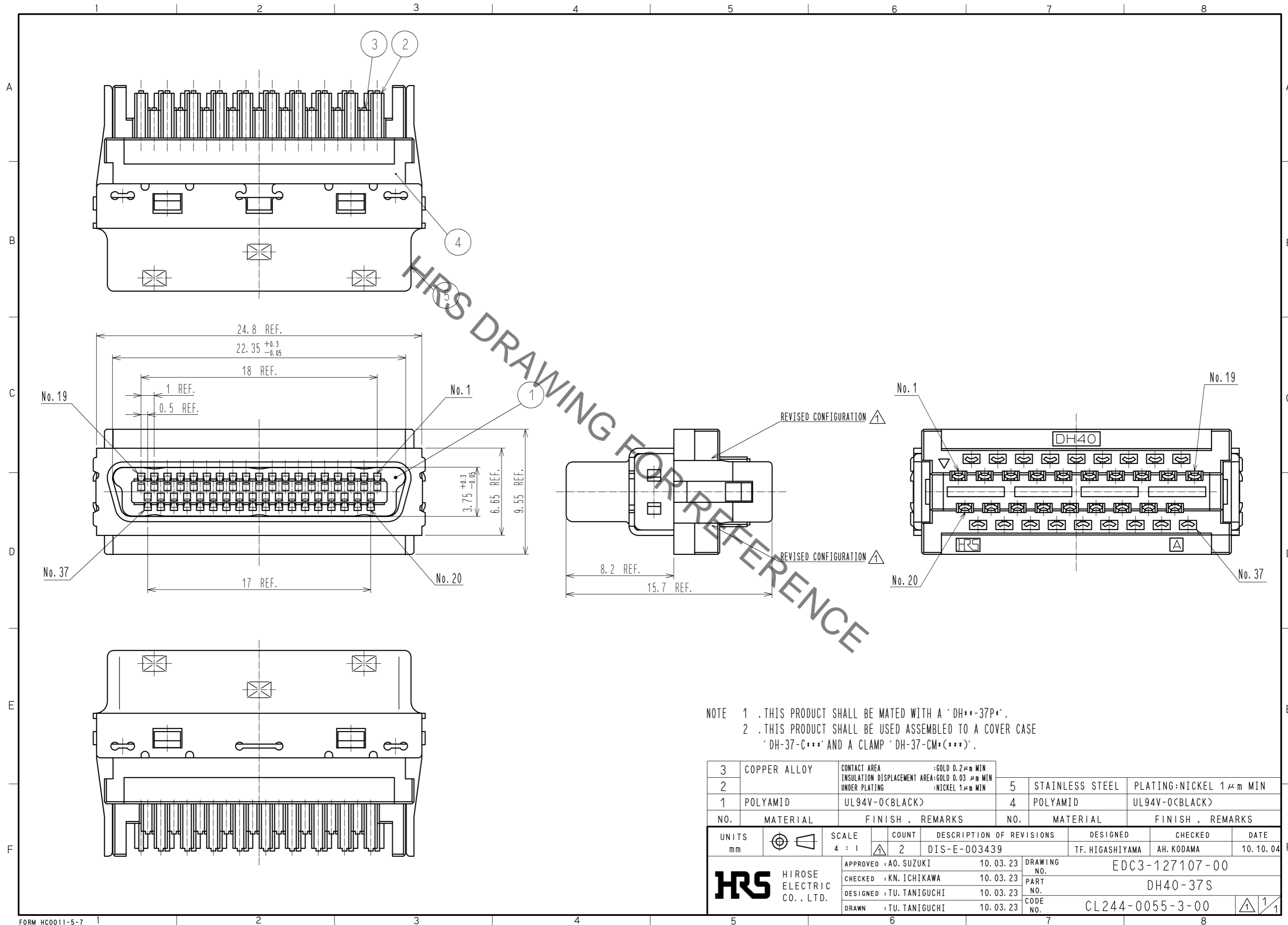


Sep.1.2021 Copyright 2021 HIROSE ELECTRIC CO., LTD. All Rights Reserved.
In case of consideration for using Automotive equipment / device which demand high reliability, kindly contact our sales window correspondents.



NOTE 1 .THIS PRODUCT SHALL BE MATED WITH A 'DH**-37P*'.
2 .THIS PRODUCT SHALL BE USED ASSEMBLED TO A COVER CASE 'DH-37-C***' AND A CLAMP 'DH-37-CM*(***)'.

3	COPPER ALLOY	CONTACT AREA :GOLD 0.2μm MIN INSULATION DISPLACEMENT AREA:GOLD 0.03 μm MIN UNDER PLATING :NICKEL 1μm MIN	5	STAINLESS STEEL	PLATING:NICKEL 1μm MIN
2			4	POLYAMID	UL94V-0(BLACK)
1	POLYAMID	UL94V-0(BLACK)			
NO.	MATERIAL	FINISH . REMARKS	NO.	MATERIAL	FINISH . REMARKS
UNITS mm		SCALE 4 : 1	COUNT 2	DESCRIPTION OF REVISIONS DIS-E-003439	
		APPROVED :A0. SUZUKI	10. 03. 23	DESIGNED	TF. HIGASHIYAMA
HIROSE ELECTRIC CO., LTD.		CHECKED :KN. ICHIKAWA	10. 03. 23	CHECKED	AH. KODAMA
		DESIGNED :TU. TANIGUCHI	10. 03. 23	DATE	10. 10. 04
		DRAWN :TU. TANIGUCHI	10. 03. 23	DRAWING NO.	EDC3-127107-00
				PART NO.	DH40-37S
				CODE NO.	CL244-0055-3-00
					1/1

X-ON Electronics

Largest Supplier of Electrical and Electronic Components

Click to view similar products for [I/O Connectors](#) category:

Click to view products by [Hirose](#) manufacturer:

Other Similar products are found below :

[571763P](#) [58098-0628](#) [72.250.1628.2](#) [72.250.2428.2](#) [74720-0505](#) [76.350.0729.0](#) [76871-1403](#) [FCN-244F080-G/1](#) [FCN-260A9920](#) [PCR-E36PM](#) [PCS-XE26MA+](#) [G38A71314B](#) [1571250010](#) [157-22500-3](#) [MS3471L14-19P L/C](#) [192991-0703](#) [172501-4002](#) [172501-6002](#) [FCN-260C008-A/L0](#) [FCN-260C024-AL0](#) [FCN-261Z008](#) [2000314-1](#) [200331-1](#) [PCR-E36FC+](#) [PCS-E28FS+](#) [PCS-XE26SLFD+](#) [PCS-XE26SLFDT+](#) [G730VID08BDC24](#) [U90B2054081210](#) [38113800006](#) [DP3AR020WQ1R200](#) [Z4.102.0680.0](#) [500-1040](#) [500-1052](#) [500-1054](#) [ZP-4008-66L](#) [0709821002](#) [DX40-20P\(55\)](#) [5554841-1](#) [MS3474W18-8P-LC*](#) [U90B3054061110](#) [U65-E04-4020](#) [ZPF000000000097891](#) [747360449](#) [10099439-003C-TRLF](#) [10137239-0021LF](#) [E9320-001-01](#) [10137239-0011LF](#) [70289-001LF](#) [70.060.1028.0](#)