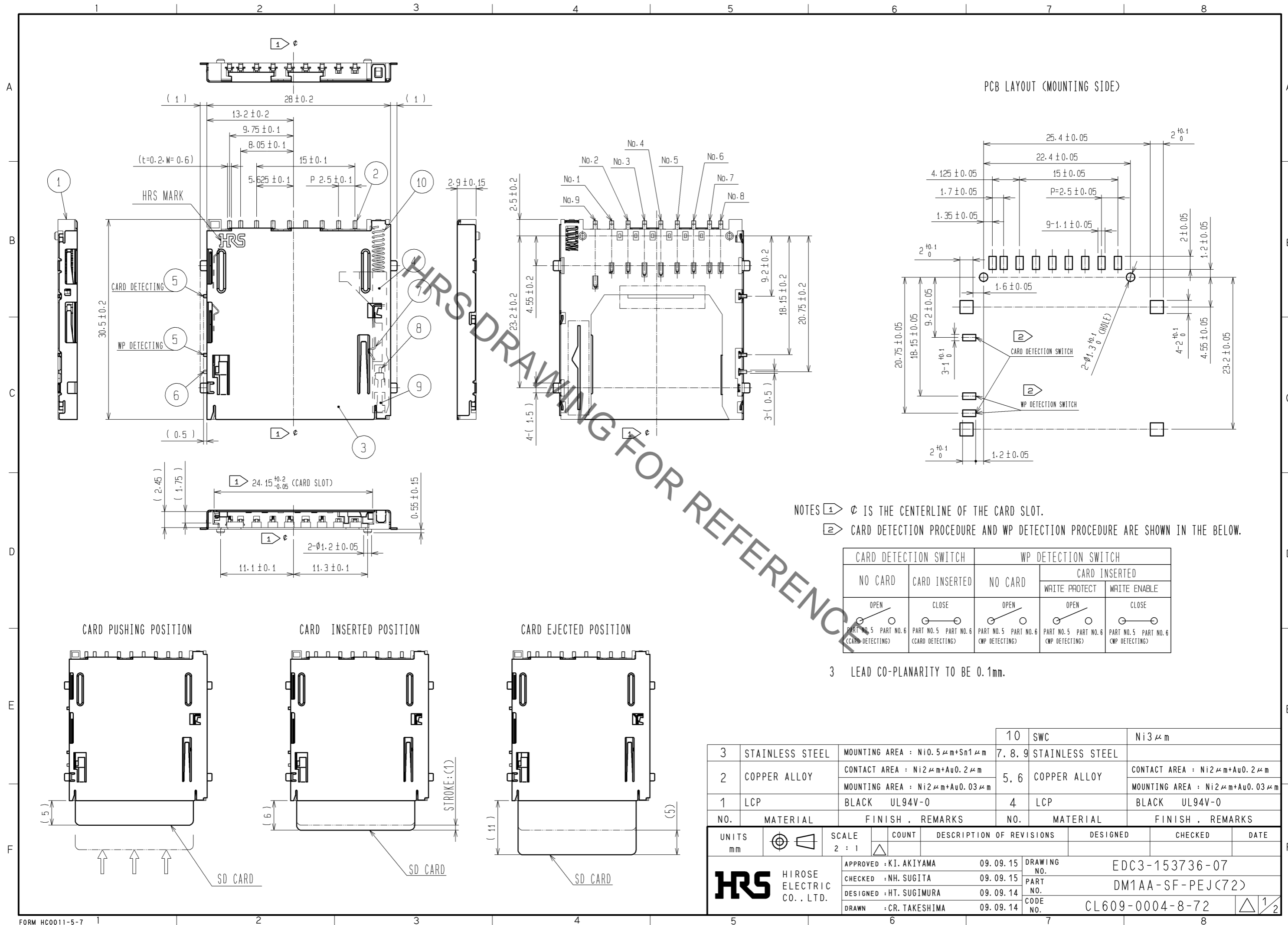


Aug.1.2021 Copyright 2021 HIROSE ELECTRIC CO., LTD. All Rights Reserved.
 In case of consideration for using Automotive equipment / device which demand high reliability, kindly contact our sales window correspondents.



NOTES ① ϕ IS THE CENTERLINE OF THE CARD SLOT.
 ② CARD DETECTION PROCEDURE AND WP DETECTION PROCEDURE ARE SHOWN IN THE BELOW.

CARD DETECTION SWITCH		WP DETECTION SWITCH		
NO CARD	CARD INSERTED	NO CARD	CARD INSERTED	
			WRITE PROTECT	WRITE ENABLE
OPEN	CLOSE	OPEN	OPEN	CLOSE
PART NO. 5 (CARD DETECTING)	PART NO. 5 (CARD DETECTING)	PART NO. 5 (WP DETECTING)	PART NO. 5 (WP DETECTING)	PART NO. 6 (WP DETECTING)

3 LEAD CO-PLANARITY TO BE 0.1mm.

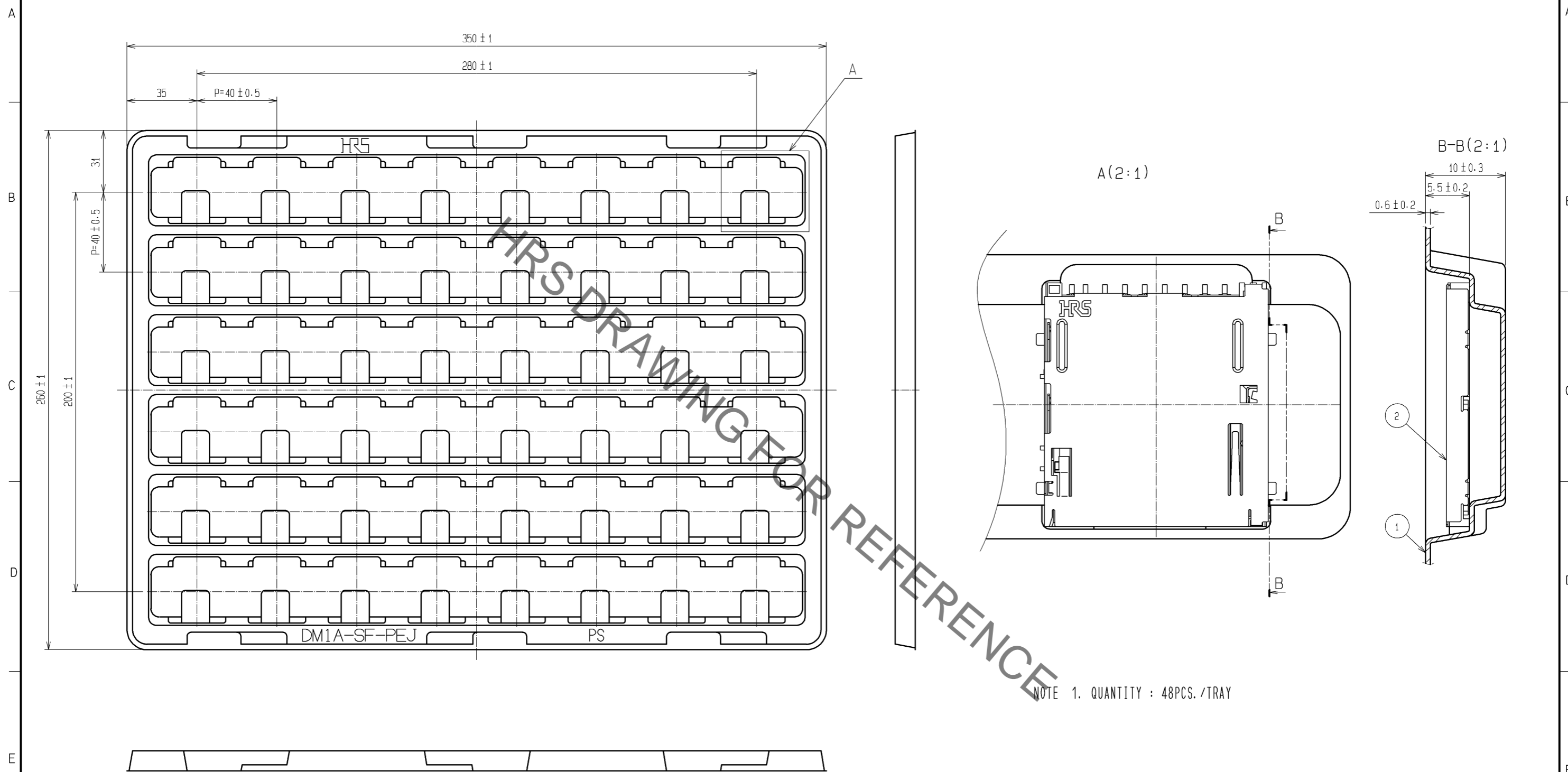
NO.	MATERIAL	FINISH . REMARKS	NO.	MATERIAL	FINISH . REMARKS
3	STAINLESS STEEL	MOUNTING AREA : Ni0.5 μm+Sn1 μm	10	SWC	Ni3 μm
2	COPPER ALLOY	CONTACT AREA : Ni2 μm+Au0.2 μm MOUNTING AREA : Ni2 μm+Au0.03 μm	7, 8, 9	STAINLESS STEEL	CONTACT AREA : Ni2 μm+Au0.2 μm MOUNTING AREA : Ni2 μm+Au0.03 μm
1	LCP	BLACK UL94V-0	4	LCP	BLACK UL94V-0

UNITS	SCALE	COUNT	DESCRIPTION OF REVISIONS	DESIGNED	CHECKED	DATE
mm	2 : 1	△	APPROVED : KI. AKIYAMA 09.09.15 CHECKED : NH. SUGITA 09.09.15 DESIGNED : HT. SUGIMURA 09.09.14 DRAWN : CR. TAKESHIMA 09.09.14			

DRAWING NO.	PART NO.	CODE NO.
EDC3-153736-07	DM1AA-SF-PEJ(72)	CL609-0004-8-72

Aug.1.2021 Copyright 2021 HIROSE ELECTRIC CO., LTD. All Rights Reserved.
In case of consideration for using Automotive equipment / device which demand high reliability, kindly contact our sales window correspondents.

CONFIGURATION OF PACKING TRAY



NOTE 1. QUANTITY : 48PCS./TRAY

2	CONNECTOR:DM1AA-SF-PEJ(72)
1	PS CLEAR
NO.	MATERIAL

HRS	DRAWING NO.	EDC3-153736-07
	PART NO.	DM1AA-SF-PEJ(72)
	CODE NO.	CL609-0004-8-72
		△ 2/2

X-ON Electronics

Largest Supplier of Electrical and Electronic Components

Click to view similar products for [Memory Card Connectors](#) category:

Click to view products by [Hirose](#) manufacturer:

Other Similar products are found below :

[M21-033321-005](#) [6407-249V-25273P](#) [6407-249V-25343P](#) [6426-201-21343](#) [69.920.0553.0](#) [FCN-568P068-G/07-4V](#) [809180410000000](#)
[N7E50-7516PG-20-WF](#) [21920-5](#) [2041353-2](#) [33CFAE-DN](#) [502431-1011](#) [EN2997S61212BN](#) [EN2997SE61212BN](#) [95622-003LF](#) [N7E50-](#)
[U516RB-50-SIN0005](#) [95079-00CALF](#) [84648-056HLF](#) [68-580163-21S](#) [33DVIR-29S12R](#) [125A-78C00](#) [MI20A-50PD-SF-EJL\(71\)](#) [KP10S-SF-](#)
[PEJ\(812\)](#) [504536-0691](#) [504580-0691](#) [CCM03-3109 B LFT](#) [2309923-1](#) [61126-050CAHLF](#) [IC1GA-68PD-1.27DS-EJ\(72\)](#) [GTFP08432B1HR](#)
[G85DT17001P1EU](#) [G85B21611142HHR](#) [GSD090144HR](#) [G85D1140022P1HR](#) [GMCB05801124EU](#) [112K-TAA0-RA1](#) [115S-ACA2](#) [115S-](#)
[ACA3](#) [115S-BS00](#) [115S-BT00](#) [115V-AD00](#) [MCSP-Q1-08-A-SG-T/R](#) [503960-0695](#) [101B-TAA0-R](#) [101D-TAAA-R01](#) [101D-TAAB-R01](#)
[104D-TCA0-R06](#) [104B-TAA0-R](#) [112C-TBAR-R02](#) [114B-40B00-R02](#)