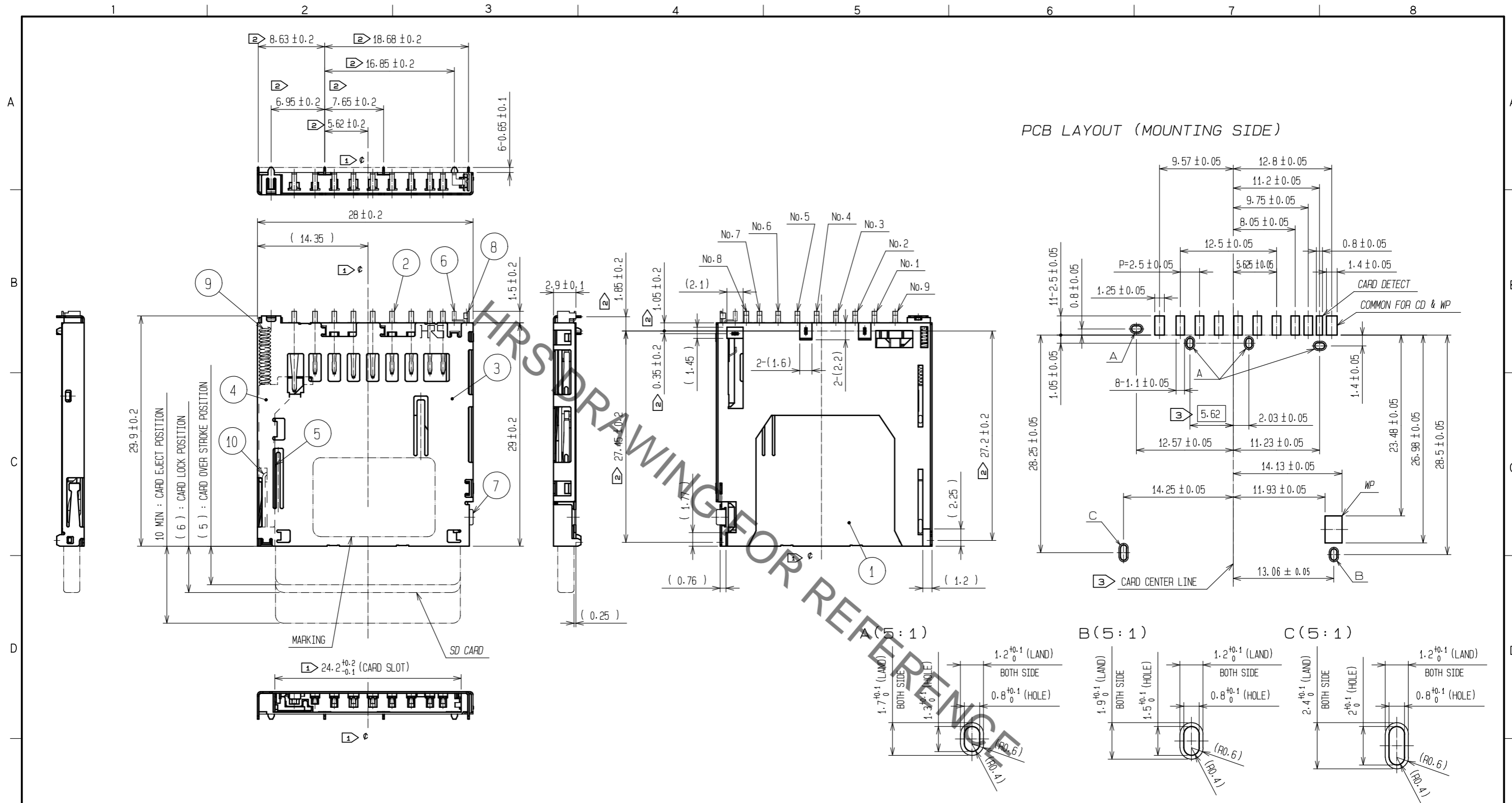


Jan.1.2022 Copyright 2022 HIROSE ELECTRIC CO., LTD. All Rights Reserved.
 In case of consideration for using Automotive equipment / device which demand high reliability, kindly contact our sales window correspondents.



- NOTE. ① ϕ IS THE CENTERLINE OF THE CARD SLOT.
 ② THESE DIMENSIONS ARE FROM THE CENTER TO THE CENTER OF EACH DIP PIN.
 ③ 'CARD CENTER LINE' IS SPECIFIED BY DIMENSION [5.62].
 4 CARD DETECTION PROCEDURE AND WP DETECTION PROCEDURE ARE SHOWN IN THE BELOW.

CARD DETECTION SWITCH		WP DETECTION SWITCH		
NO CARD	CARD INSERTED	NO CARD	CARD INSERTED	
			WRITE PROTECT	WRITE ENABLE
OPEN	CLOSE	OPEN	OPEN	CLOSE
PART NO.6 PART NO.8	PART NO.6 PART NO.8	PART NO.7 PART NO.8	PART NO.7 PART NO.8	PART NO.7 PART NO.8

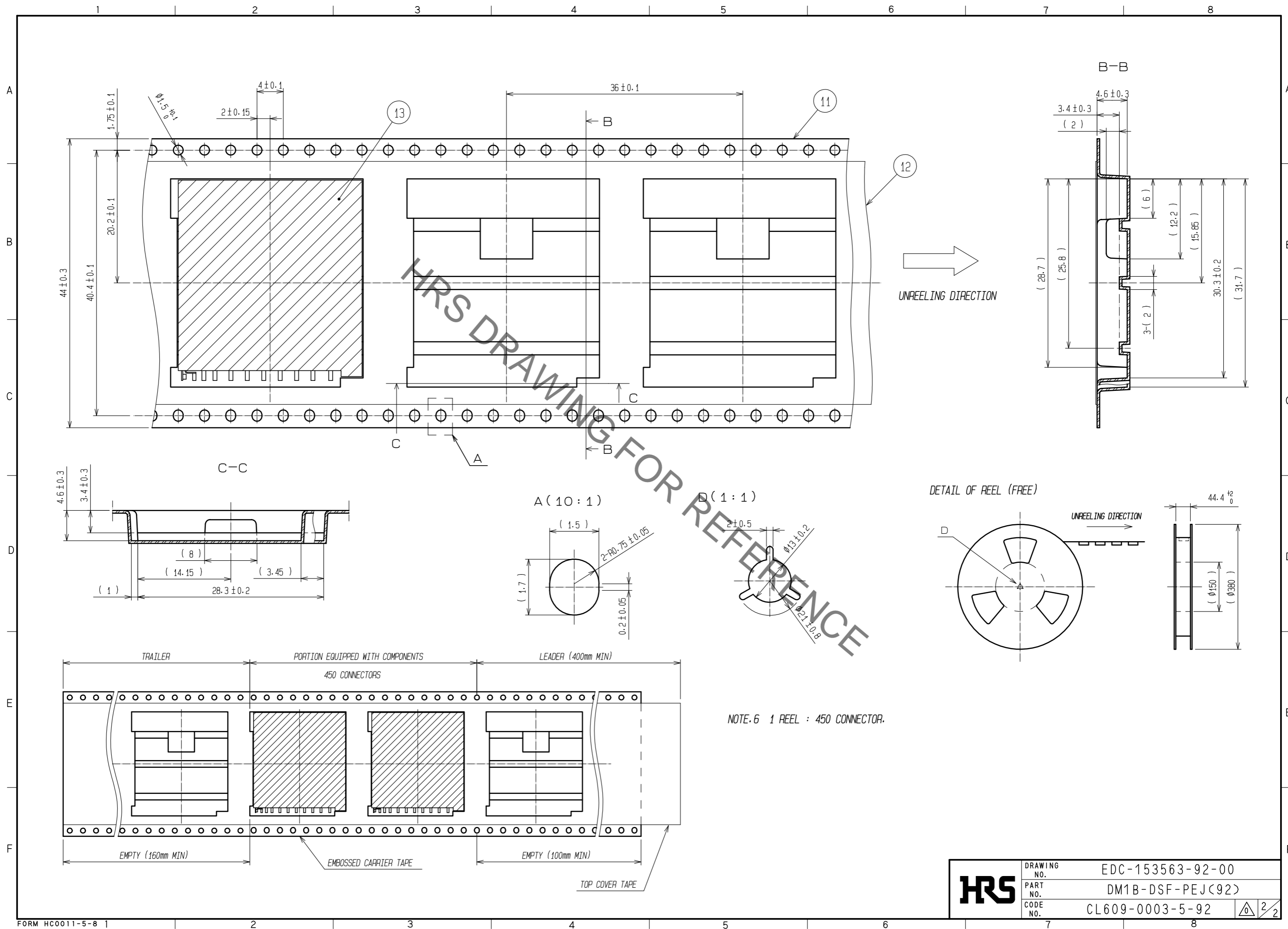
5 LEAD CO-PLANARITY TO BE 0.1 mm.

NO.	MATERIAL	FINISH	REMARKS	NO.	MATERIAL	FINISH	REMARKS
5	STAINLESS STEEL			13	(CONNECTOR)		
4	PA	BLACK	UL94V-0	12	POLYESTER		
3	STAINLESS STEEL	DIP AREA	Ni0.2 μ m + Sn1.5 μ m	11	PS		
2	COPPER ALLOY	CONTACT AREA	Ni1.5 μ m + Au0.2 μ m	10	STAINLESS STEEL		
		MOUNTING AREA	Ni1.5 μ m + Au0.03 μ m	9	STEEL WIRE	Ni	
1	LCP	BLACK	UL94V-0	6~8	COPPER ALLOY	CONTACT AREA	Ni1.5 μ m + Au0.2 μ m
						MOUNTING AREA	Ni1.5 μ m + Au0.03 μ m

UNITS	SCALE	COUNT	DESCRIPTION OF REVISIONS	DESIGNED	CHECKED	DATE
mm	2 : 1					

APPROVED	CHECKED	DESIGNED	DRAWN	DRAWING NO.	PART NO.	CODE NO.
HT. YAMAGUCHI	HT. YAMAGUCHI	MT. ITANO	DS. HIROWATARI	20200318	20200318	20200317
				EDC-153563-92-00	DM1B-DSF-PEJ(92)	CL609-0003-5-92

Jan.1.2022 Copyright 2022 HIROSE ELECTRIC CO., LTD. All Rights Reserved.
 In case of consideration for using Automotive equipment / device which demand high reliability, kindly contact our sales window correspondents.



NOTE.6 1 REEL : 450 CONNECTOR.

HRS	DRAWING NO.	EDC-153563-92-00
	PART NO.	DM1B-DSF-PEJ(92)
	CODE NO.	CL609-0003-5-92
		2/2

X-ON Electronics

Largest Supplier of Electrical and Electronic Components

Click to view similar products for [Memory Card Connectors](#) category:

Click to view products by [Hirose](#) manufacturer:

Other Similar products are found below :

[M21-033321-005](#) [6407-249V-25273P](#) [6407-249V-25343P](#) [69.920.0553.0](#) [MCR60A-98D-2.54DSA\(70\)](#) [809180410000000](#) [DM3AT-SF-PEJM5\(41\)](#) [N7E50-7516PG-20-WF](#) [HMCAP001](#) [252-0144-000](#) [2041353-2](#) [308-DS1P0811-192](#) [HM2P09PDR360N9LF](#) [502431-1011](#) [10-247926-166](#) [10-629549-258N](#) [11327-001](#) [11327-002](#) [617230001](#) [95622-003LF](#) [N7E50-U516RB-50-SIN0005](#) [84648-056HLF](#) [93-570123-08P](#) [125A-78C00](#) [MI20A-50PD-SF-EJL\(71\)](#) [504536-0691](#) [CCM03-3109 B LFT](#) [MI21-50PD-SF\(91\)](#) [2309923-1](#) [61126-050CAHLF](#) [IC1GA-68PD-1.27DS-EJ\(72\)](#) [GTFP08432B1HR](#) [G85DT17001P1EU](#) [G85C11101152HHR](#) [G85D1160022HHR](#) [KP15TL-SF\(800\)](#) [KP10BH-8S-SF\(800\)](#) [SCE2MSDB76A121SN](#) [SCE2MSDZN76A121SN](#) [C00710B0250001](#) [47309-2651](#) [47481-0001](#) [67799-0004](#) [91228-3006](#) [104168-1616](#) [112I-TA01](#) [112K-TAA0-RA1](#) [115S-ACA2](#) [115S-ACA3](#) [115S-BS00](#)