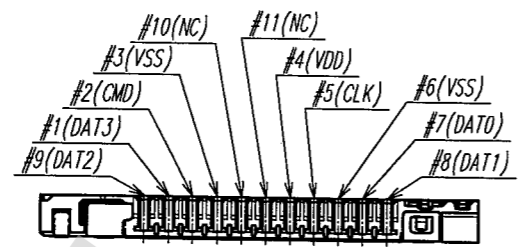
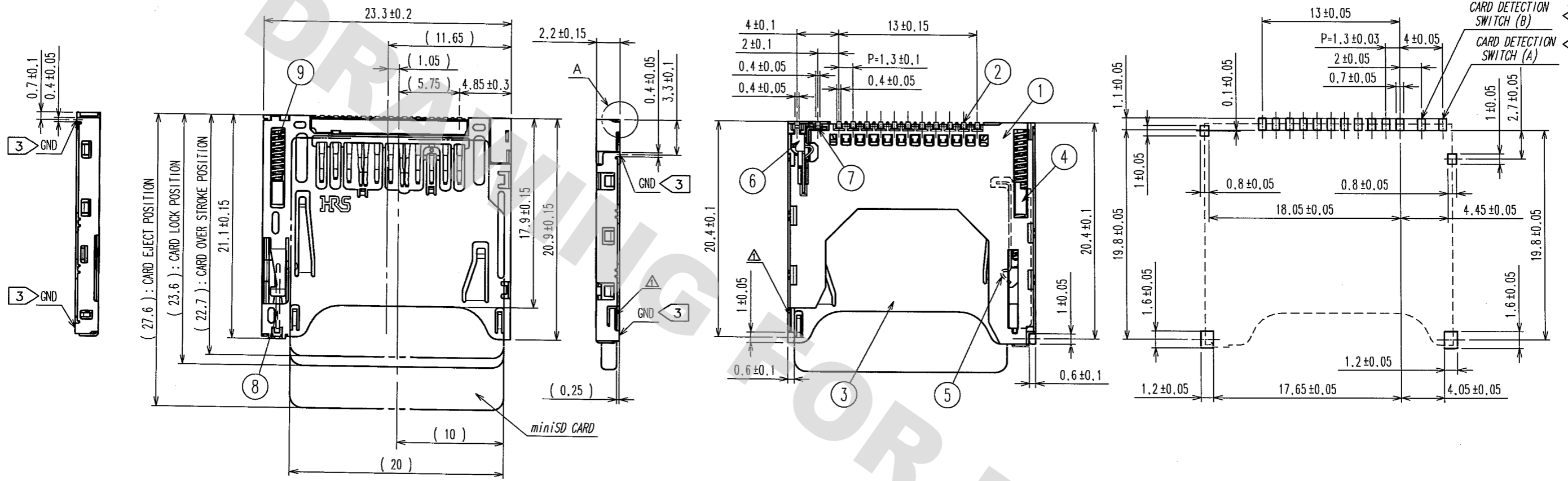


COUNT	DESCRIPTION OF REVISIONS	BY	CHKD	DATE	COUNT	DESCRIPTION OF REVISIONS	BY	CHKD	DATE
2	RE-F-10211	R.T		04.11.17					



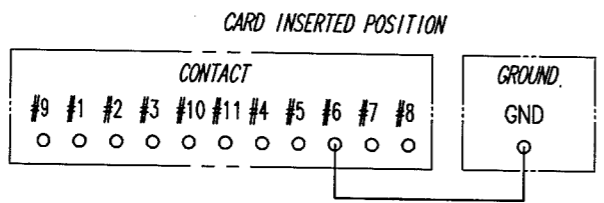
RECOMMENDED PCB LAYOUT (MOUNTING SIDE)



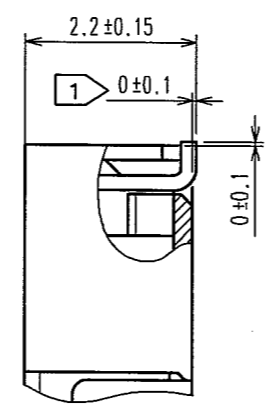
NOTE. ① CO-PLANARITY SHALL BE 0.1mm MAX.
 ② CARD DETECTION PROCEDURE IS SHOWN BELOW.

CARD DETECTION SWITCH			
NO CARD	CARD INSERTED		
CLOSE	OPEN		
(A) (B)	(A)	(B)	

③ CIRCUIT OF CONTACTS AND GROUND IS SHOWN BELOW.



A (10:1)



4	HEAT-RESISTANT RESIN	BLACK	UL94V-0	9	STEEL WIRE	Ni PLATING
3	COPPER ALLOY(t=0.2)			8	STAINLESS STEEL	
2	PHOSPHOR BRONZE(t=0.2)	CONTACT AREA	Ni1.5μm+Au0.1μm	6, 7	PHOSPHOR BRONZE(t=0.2)	CONTACT AREA Ni1.5μm+Au0.1μm
		MOUNTING AREA	Ni1.5μm+Au0.03μm			MOUNTING AREA Ni1.5μm+Au0.03μm
1	HEAT-RESISTANT RESIN	BLACK	UL94V-0	5	STAINLESS STEEL	

NO.	MATERIAL	FINISH, REMARKS	NO.	MATERIAL	FINISH, REMARKS
4	HEAT-RESISTANT RESIN	BLACK	UL94V-0	9	STEEL WIRE
3	COPPER ALLOY(t=0.2)			8	STAINLESS STEEL
2	PHOSPHOR BRONZE(t=0.2)	CONTACT AREA Ni1.5μm+Au0.1μm MOUNTING AREA Ni1.5μm+Au0.03μm	6, 7	PHOSPHOR BRONZE(t=0.2)	CONTACT AREA Ni1.5μm+Au0.1μm MOUNTING AREA Ni1.5μm+Au0.03μm
1	HEAT-RESISTANT RESIN	BLACK	UL94V-0	5	STAINLESS STEEL

CODE NO. (OLD)	CL	DRAWN	DESIGNED	CHECKED	APPROVED	RELEASED
		R.Takayama	R.Takayama	H.Ozawa	K.Akiyama	
		04.04.22	04.04.22	04.04.23	04.04.23	

SCALE	FREE	DRAWING NO.	EDC3-155009	PART NO.	DM2B-DSFW-PEJ-S
UNITS	mm	CODE NO.	CL609-0009-1		1/2

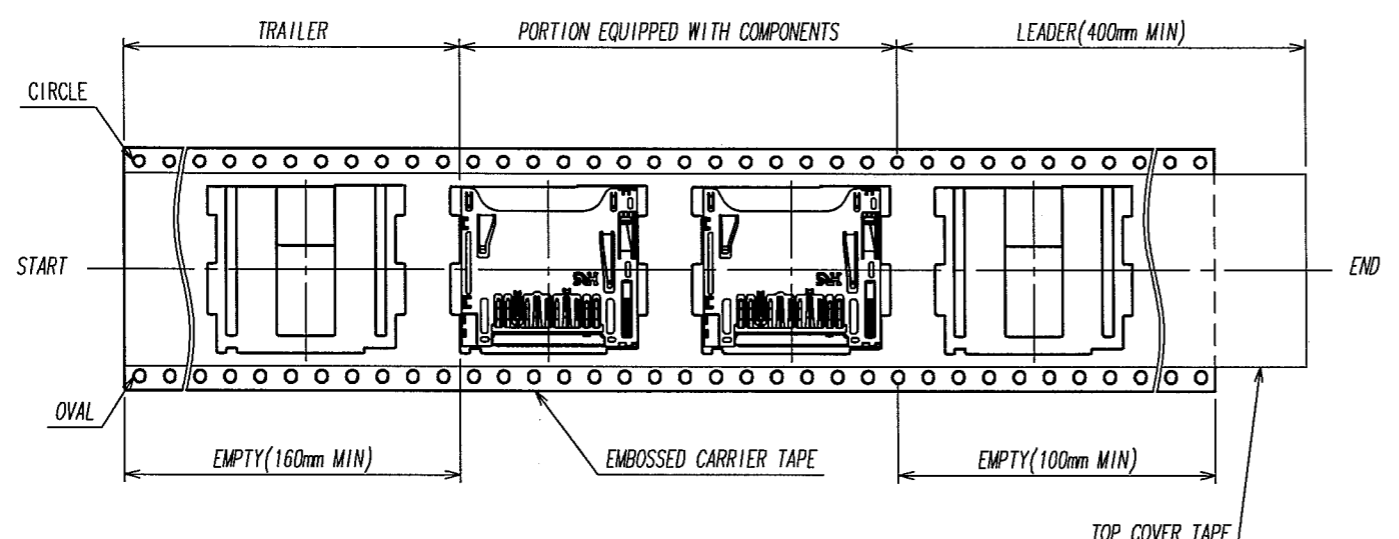
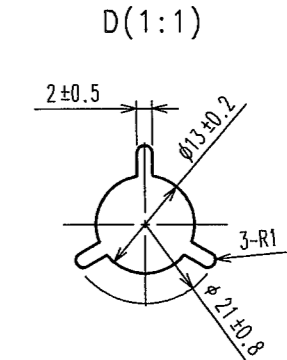
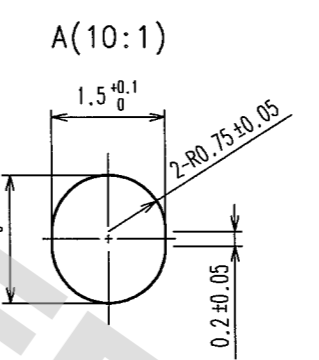
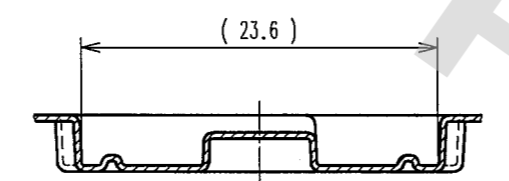
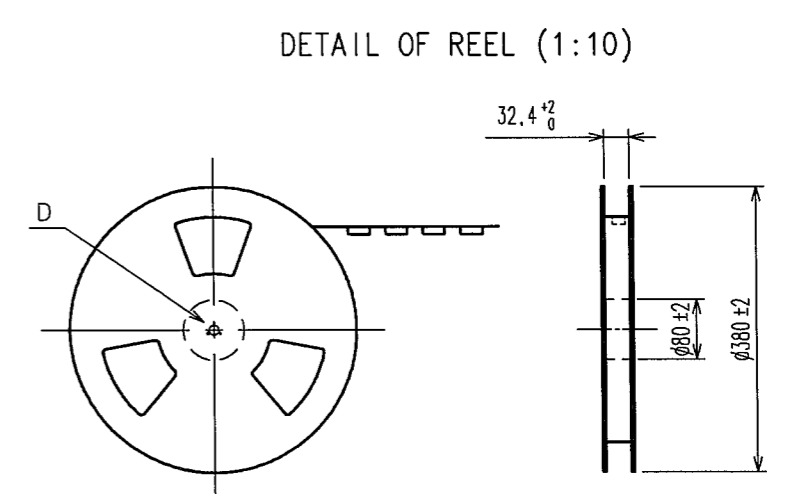
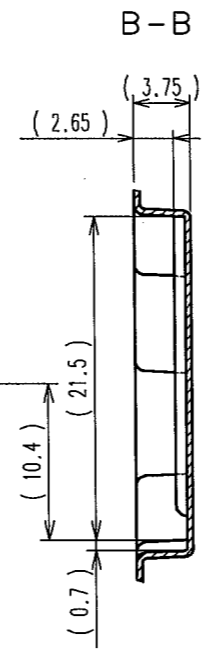
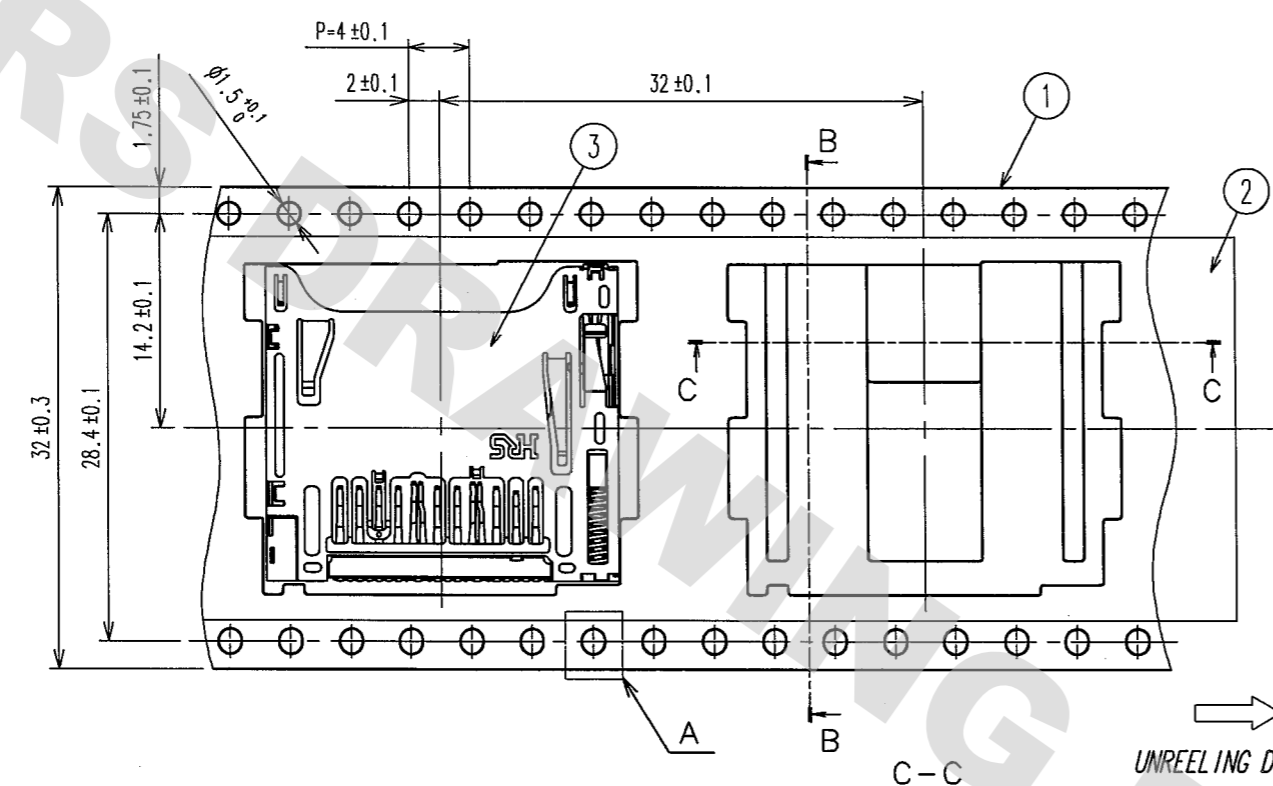
DRAWING FOR REFERENCE: This is subject to change without notice
08/11/2012

TO

DRAWING FOR REFERENCE: This is subject to change without notice
08/11/2012

TO

COUNT	DESCRIPTION OF REVISIONS	BY	CHKD	DATE	COUNT	DESCRIPTION OF REVISIONS	BY	CHKD	DATE



NOTE. 1 PACKING TYPE: TAPE AND REEL. 800 PCS PER REEL.

3	(CONNECTORS)	
2	POLYESTER	
1	PS	

NO.	MATERIAL	FINISH, REMARKS	NO.	MATERIAL	FINISH, REMARKS		
CODE NO. (OLD)	CL		DRAWN	DESIGNED	CHECKED	APPROVED	RELEASED
			R.Takayama	R.Takayama	H.Ozawa	K.Akiyama	
			04.04.22	04.04.22	04.04.23	04.04.23	
DRAWING NO.		EDC3-155009	PART NO.		DM2B-DSFW-PEJ-S		
SCALE		2: 1	CODE NO.		CL609-0009-1	2/2	
UNITS		mm	HRS		HIROSE ELECTRIC CO., LTD		

X-ON Electronics

Largest Supplier of Electrical and Electronic Components

Click to view similar products for [Memory Card Connectors](#) category:

Click to view products by [Hirose](#) manufacturer:

Other Similar products are found below :

[M21-033321-005](#) [6407-249V-25273P](#) [6407-249V-25343P](#) [6426-201-21343](#) [69.920.0553.0](#) [FCN-568P068-G/07-4V](#) [809180410000000](#)
[N7E50-7516PG-20-WF](#) [21920-5](#) [2041353-2](#) [33CFAE-DN](#) [502431-1011](#) [EN2997S61212BN](#) [EN2997SE61212BN](#) [95622-003LF](#) [N7E50-](#)
[U516RB-50-SIN0005](#) [95079-00CALF](#) [84648-056HLF](#) [68-580163-21S](#) [33DVIR-29S12R](#) [125A-78C00](#) [MI20A-50PD-SF-EJL\(71\)](#) [KP10S-SF-](#)
[PEJ\(812\)](#) [504536-0691](#) [504580-0691](#) [CCM03-3109 B LFT](#) [2309923-1](#) [61126-050CAHLF](#) [IC1GA-68PD-1.27DS-EJ\(72\)](#) [GTFP08432B1HR](#)
[G85DT17001P1EU](#) [G85B21611142HHR](#) [GSD090144HR](#) [G85D1140022P1HR](#) [GMCB05801124EU](#) [112K-TAA0-RA1](#) [115S-ACA2](#) [115S-](#)
[ACA3](#) [115S-BS00](#) [115S-BT00](#) [115V-AD00](#) [MCSP-Q1-08-A-SG-T/R](#) [503960-0695](#) [101B-TAA0-R](#) [101D-TAAA-R01](#) [101D-TAAB-R01](#)
[104D-TCA0-R06](#) [104B-TAA0-R](#) [112C-TBAR-R02](#) [114B-40B00-R02](#)