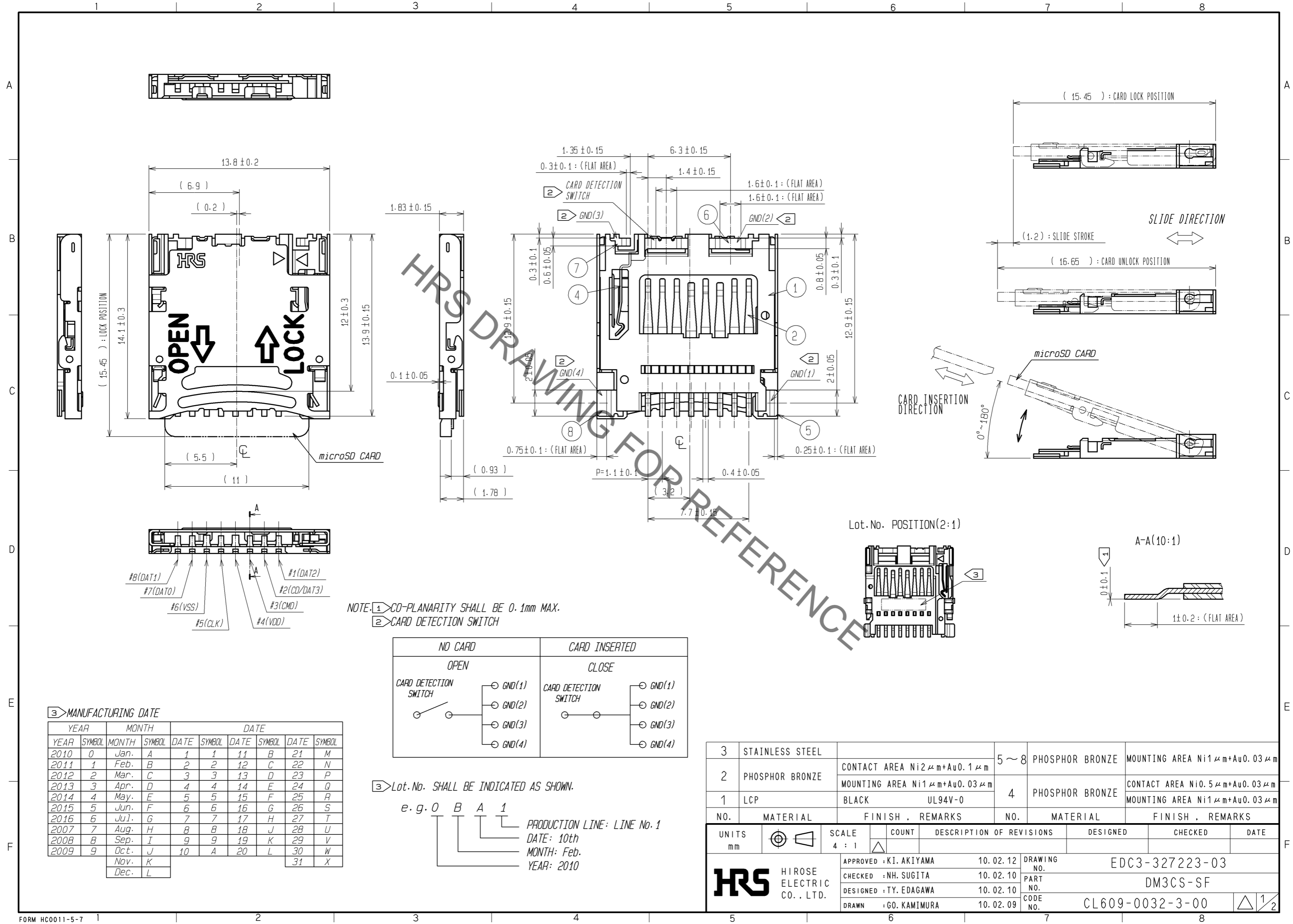
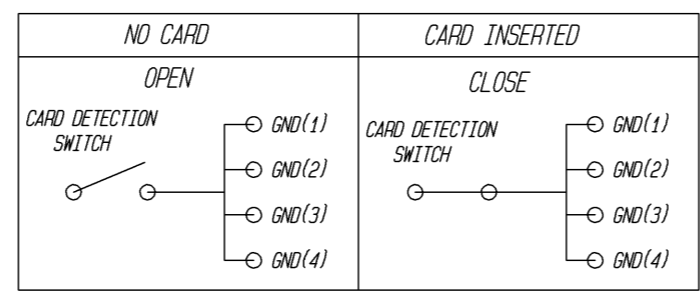


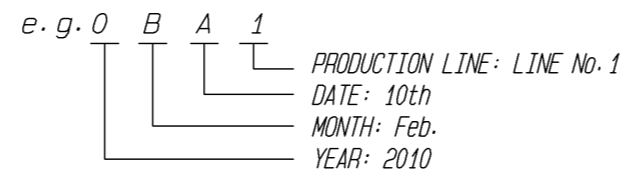
Aug.1.2021 Copyright 2021 HIROSE ELECTRIC CO., LTD. All Rights Reserved.
 In case of consideration for using Automotive equipment / device which demand high reliability, kindly contact our sales window correspondents.



NOTE: ① CO-PLANARITY SHALL BE 0.1mm MAX.
 ② CARD DETECTION SWITCH



③ Lot.No. SHALL BE INDICATED AS SHOWN.



③ MANUFACTURING DATE

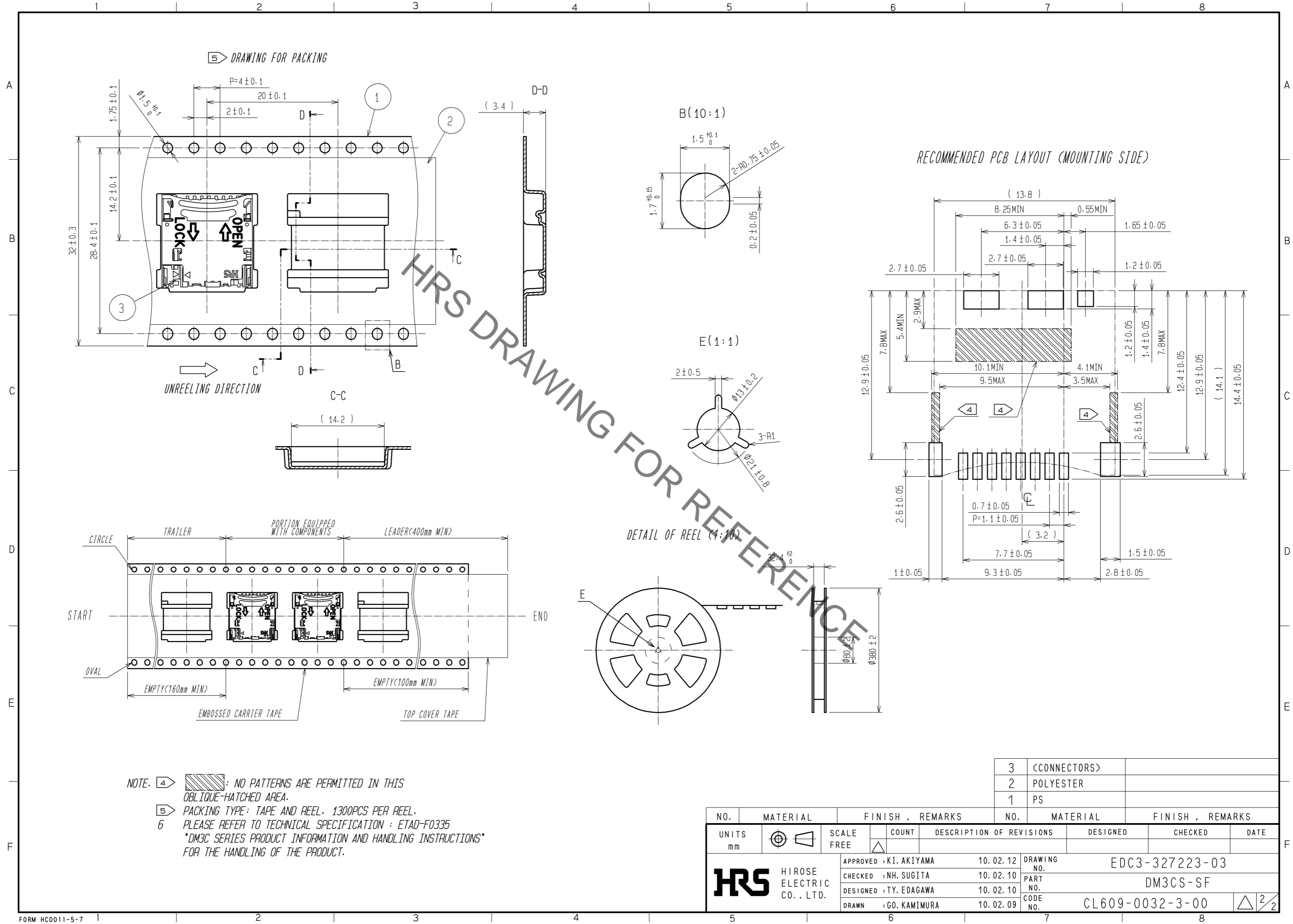
YEAR	SYMBOL	MONTH	SYMBOL	DATE	SYMBOL	DATE	SYMBOL	DATE	SYMBOL
2010	0	Jan.	A	1	1	11	B	21	M
2011	1	Feb.	B	2	2	12	C	22	N
2012	2	Mar.	C	3	3	13	D	23	P
2013	3	Apr.	D	4	4	14	E	24	Q
2014	4	May.	E	5	5	15	F	25	R
2015	5	Jun.	F	6	6	16	G	26	S
2016	6	Jul.	G	7	7	17	H	27	T
2007	7	Aug.	H	8	8	18	J	28	U
2008	8	Sep.	I	9	9	19	K	29	V
2009	9	Oct.	J	10	A	20	L	30	W
		Nov.	K						
		Dec.	L						

NO.	MATERIAL	FINISH	REMARKS	NO.	MATERIAL	FINISH	REMARKS
3	STAINLESS STEEL			5~8	PHOSPHOR BRONZE		MOUNTING AREA Ni1μm+Au0.03μm
2	PHOSPHOR BRONZE		CONTACT AREA Ni2μm+Au0.1μm	4	PHOSPHOR BRONZE		CONTACT AREA Ni0.5μm+Au0.03μm
1	LCP	BLACK	UL94V-0				MOUNTING AREA Ni1μm+Au0.03μm

UNITS	SCALE	COUNT	DESCRIPTION OF REVISIONS	DESIGNED	CHECKED	DATE
mm	4:1	△	APPROVED: KI. AKIYAMA 10.02.12			
			CHECKED: NH. SUGITA 10.02.10			
			DESIGNED: TY. EDAGAWA 10.02.10			
			DRAWN: GO. KAMIMURA 10.02.09			

DRAWING NO.	PART NO.	CODE NO.
EDC3-327223-03	DM3CS-SF	CL609-0032-3-00

Aug.1.2021 Copyright 2021 HIROSE ELECTRIC CO., LTD. All Rights Reserved.
 In case of consideration for using Automotive equipment / device which demand high reliability, kindly contact our sales window correspondents.



NOTE. 4 : NO PATTERNS ARE PERMITTED IN THIS OBLIQUE-HATCHED AREA.
 5 PACKING TYPE: TAPE AND REEL. 1300PCS PER REEL.
 6 PLEASE REFER TO TECHNICAL SPECIFICATION : ETAD-F0335 "DM3C SERIES PRODUCT INFORMATION AND HANDLING INSTRUCTIONS" FOR THE HANDLING OF THE PRODUCT.

NO.	MATERIAL	FINISH . REMARKS	NO.	MATERIAL	FINISH . REMARKS
3	(CONNECTORS)		3	(CONNECTORS)	
2	POLYESTER		2	POLYESTER	
1	PS		1	PS	

UNITS mm		SCALE FREE	COUNT 	DESCRIPTION OF REVISIONS	DESIGNED	CHECKED	DATE
HRS HIROSE ELECTRIC CO., LTD.		APPROVED : KI. AKIYAMA	10.02.12	DRAWING NO.	EDC3-327223-03		
		CHECKED : NH. SUGITA	10.02.10	PART NO.	DM3CS-SF		
		DESIGNED : TY. EDAGAWA	10.02.10	CODE NO.	CL609-0032-3-00		
		DRAWN : GO. KAMIMURA	10.02.09		2/2		

X-ON Electronics

Largest Supplier of Electrical and Electronic Components

Click to view similar products for [Memory Card Connectors](#) category:

Click to view products by [Hirose](#) manufacturer:

Other Similar products are found below :

[M21-033321-005](#) [6407-249V-25273P](#) [6407-249V-25343P](#) [6426-201-21343](#) [69.920.0553.0](#) [FCN-568P068-G/07-4V](#) [809180410000000](#)
[N7E50-7516PG-20-WF](#) [21920-5](#) [2041353-2](#) [33CFAE-DN](#) [502431-1011](#) [EN2997S61212BN](#) [EN2997SE61212BN](#) [95622-003LF](#) [N7E50-](#)
[U516RB-50-SIN0005](#) [95079-00CALF](#) [84648-056HLF](#) [68-580163-21S](#) [33DVIR-29S12R](#) [125A-78C00](#) [MI20A-50PD-SF-EJL\(71\)](#) [KP10S-SF-](#)
[PEJ\(812\)](#) [504536-0691](#) [504580-0691](#) [CCM03-3109 B LFT](#) [2309923-1](#) [61126-050CAHLF](#) [IC1GA-68PD-1.27DS-EJ\(72\)](#) [GTFP08432B1HR](#)
[G85DT17001P1EU](#) [G85B21611142HHR](#) [GSD090144HR](#) [G85D1140022P1HR](#) [GMCB05801124EU](#) [112K-TAA0-RA1](#) [115S-ACA2](#) [115S-](#)
[ACA3](#) [115S-BS00](#) [115S-BT00](#) [115V-AD00](#) [MCSP-Q1-08-A-SG-T/R](#) [503960-0695](#) [101B-TAA0-R](#) [101D-TAAA-R01](#) [101D-TAAB-R01](#)
[104D-TCA0-R06](#) [104B-TAA0-R](#) [112C-TBAR-R02](#) [114B-40B00-R02](#)