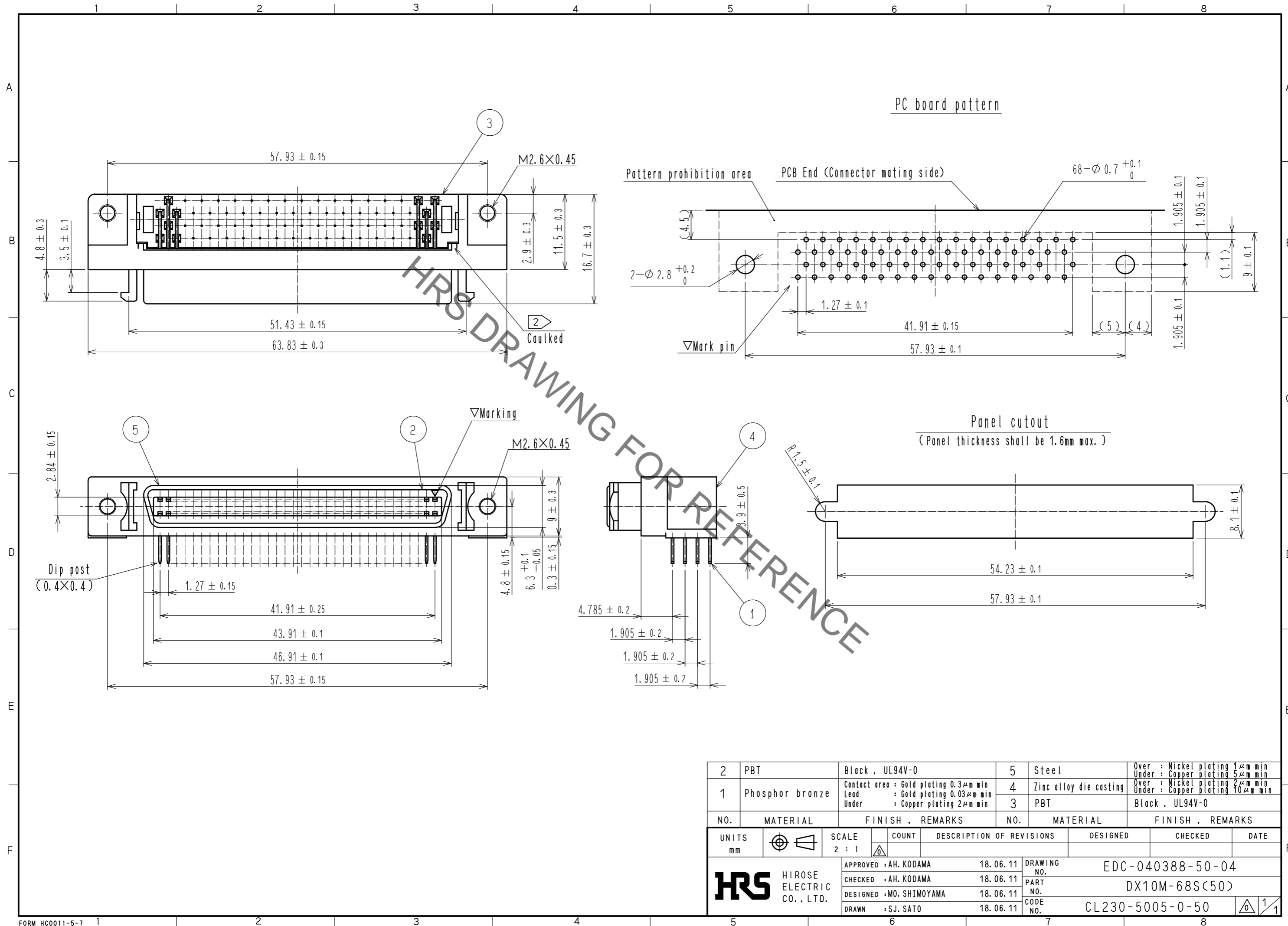


Aug.1.2021 Copyright 2021 HIROSE ELECTRIC CO., LTD. All Rights Reserved.
In case of consideration for using Automotive equipment / device which demand high reliability, kindly contact our sales window correspondents.



| 2 | PBT | Black . UL94V-0 | 5 | Steel | Over : Nickel plating 1 μ m min Under : Copper plating 5 μ m min |
|--------------------------------------|-----------------|---|----------|------------------------------|--|
| 1 | Phosphor bronze | Contact area : Gold plating 0.3 μ m min Lead : Gold plating 0.03 μ m min Under : Copper plating 2 μ m min | 4 | Zinc alloy die casting | Over : Nickel plating 2 μ m min Under : Copper plating 10 μ m min |
| | | | 3 | PBT | Black . UL94V-0 |
| NO. | MATERIAL | FINISH . REMARKS | NO. | MATERIAL | FINISH . REMARKS |
| UNITS | | SCALE | COUNT | DESCRIPTION OF REVISIONS | |
| mm | | 2 : 1 | | DESIGNED | CHECKED |
| HRS HIROSE ELECTRIC CO., LTD. | | APPROVED : AH. KODAMA | 18.06.11 | DRAWING NO. EDC-040388-50-04 | |
| | | CHECKED : AH. KODAMA | 18.06.11 | PART NO. DX10M-68S(50) | |
| | | DESIGNED : MO. SHIMOYAMA | 18.06.11 | CODE NO. CL230-5005-0-50 | |
| | | DRAWN : SJ. SATO | 18.06.11 | | |

X-ON Electronics

Largest Supplier of Electrical and Electronic Components

Click to view similar products for [I/O Connectors](#) category:

Click to view products by [Hirose](#) manufacturer:

Other Similar products are found below :

[571763P](#) [58098-0628](#) [72.250.1628.2](#) [72.250.2428.2](#) [74720-0505](#) [76.350.0729.0](#) [76871-1403](#) [FCN-244F080-G/1](#) [FCN-260A9920](#) [MP-5T180MUNNA-005](#) [PCR-E36PM](#) [PCS-XE26MA+](#) [G38A71314B](#) [1571250010](#) [157-22500-3](#) [MS3471L14-19P L/C](#) [192991-0703](#) [172501-4002](#) [172501-6002](#) [FCN-260C008-A/L0](#) [FCN-260C024-AL0](#) [FCN-261Z008](#) [2000314-1](#) [200331-1](#) [PCR-E36FC+](#) [PCS-E28FS+](#) [PCS-XE26SLFD+](#) [PCS-XE26SLFDT+](#) [G730VID08BDC24](#) [HDR-E14MSG1+](#) [U90B2054081210](#) [UE86K842720321](#) [38113800006](#)
[DP3AR020WQ1R200](#) [Z4.102.0680.0](#) [500-1040](#) [500-1052](#) [500-1054](#) [ZP-4008-66L](#) [0709821002](#) [DX40-20P\(55\)](#) [5554841-1](#) [MS3474W18-8P-LC*](#) [SM3106F14S-7S-LC](#) [U90B3054061110](#) [U65-E04-4020](#) [ZPF000000000097891](#) [557-262M2-06C](#) [747360449](#) [10099439-003C-TRLF](#)