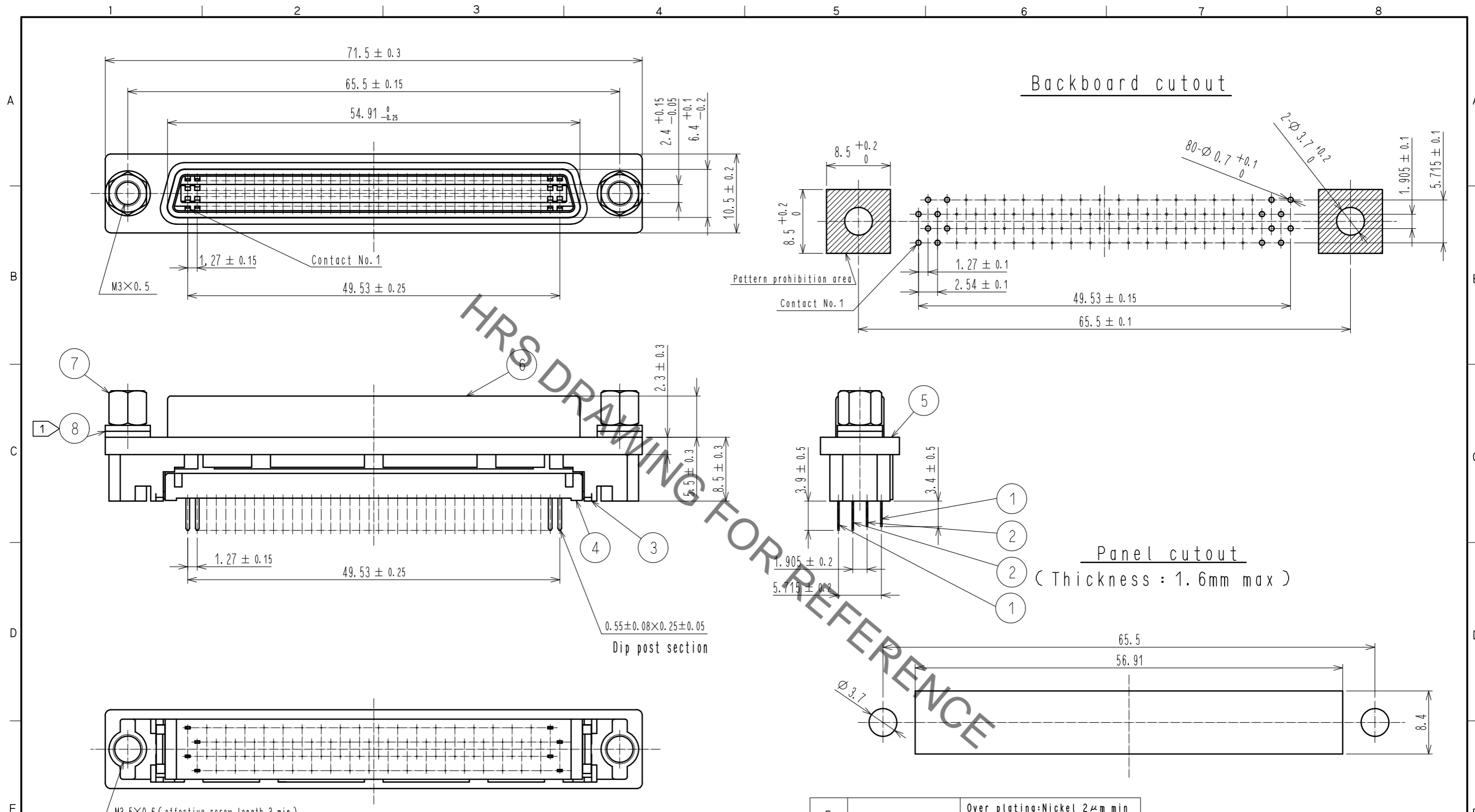


Sep.1.2021 Copyright 2021 HIROSE ELECTRIC CO., LTD. All Rights Reserved.
In case of consideration for using Automotive equipment / device which demand high reliability, kindly contact our sales window correspondents.



Note ① Part No. ⑧ shall be finished as shown below according to panel thickness.

Panel thickness	Number of washer
t=0.7~1.0	2 each
t=1.5~1.8	1 each

5	Zinc Alloy Die Casting	Over plating:Nickel 2μm min Under plating:Copper 10μm min	8	Steel	Over plating:Nickel 2μm min Under plating:Copper 3μm min
4	PBT	Black, UL94V-0	7	Brass	Over plating:Nickel 2μm min Under plating:Copper 1μm min
3	PBT	Black, UL94V-0			
1~2	Phosphor Bronze	Contact area:Gold 0.2μm min Lead area:Gold 0.03μm min Under plating:Nickel 2μm min	6	Steel	Over plating:Nickel 1μm min Under plating:Copper 5μm min
NO.	MATERIAL	FINISH . REMARKS	NO.	MATERIAL	FINISH . REMARKS

UNITS	SYMBOLS	SCALE	COUNT	DESCRIPTION OF REVISIONS	DESIGNED	CHECKED	DATE
mm	⊕, △	2 : 1	△				

APPROVED	:RI. TAKAYASU	18.05.23	DRAWING NO.	EDC-043584-50-00
CHECKED	:AH. KODAMA	18.05.23	PART NO.	DX20A-80S(50)
DESIGNED	:TS. ITO	18.05.23	CODE NO.	CL230-0158-3-50
DRAWN	:AK. AKIYAMA	18.05.23		

X-ON Electronics

Largest Supplier of Electrical and Electronic Components

Click to view similar products for [I/O Connectors](#) category:

Click to view products by [Hirose](#) manufacturer:

Other Similar products are found below :

[571763P](#) [58098-0628](#) [72.250.1628.2](#) [72.250.2428.2](#) [74720-0505](#) [76.350.0729.0](#) [76871-1403](#) [FCN-244F080-G/1](#) [FCN-260A9920](#) [PCR-E36PM](#) [PCS-XE26MA+](#) [G38A71314B](#) [1571250010](#) [157-22500-3](#) [MS3471L14-19P L/C](#) [192991-0703](#) [172501-4002](#) [172501-6002](#) [FCN-260C008-A/L0](#) [FCN-260C024-AL0](#) [FCN-261Z008](#) [2000314-1](#) [200331-1](#) [PCR-E36FC+](#) [PCS-E28FS+](#) [PCS-XE26SLFD+](#) [PCS-XE26SLFDT+](#) [G730VID08BDC24](#) [U90B2054081210](#) [UE86K842720321](#) [38113800006](#) [DP3AR020WQ1R200](#) [Z4.102.0680.0](#) [500-1040](#) [500-1052](#) [500-1054](#) [ZP-4008-66L](#) [0709821002](#) [DX40-20P\(55\)](#) [5554841-1](#) [MS3474W18-8P-LC*](#) [SM3106F14S-7S-LC](#) [U90B3054061110](#) [U65-E04-4020](#) [ZPF000000000097891](#) [557-262M2-06C](#) [747360449](#) [10099439-003C-TRLF](#) [10137239-0021LF](#) [E9320-001-01](#)