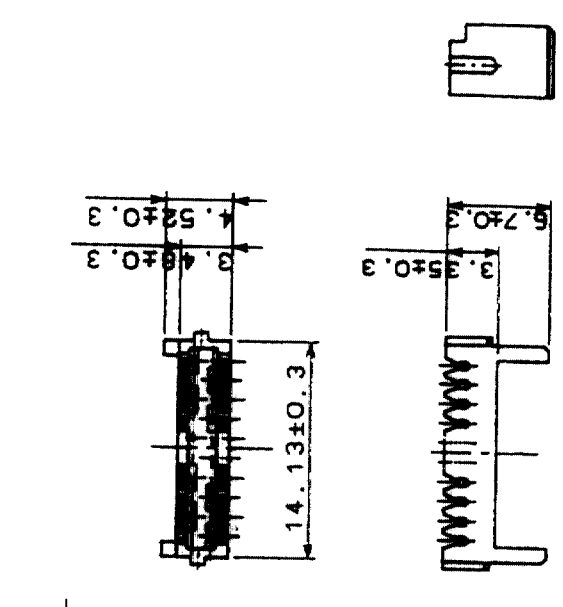
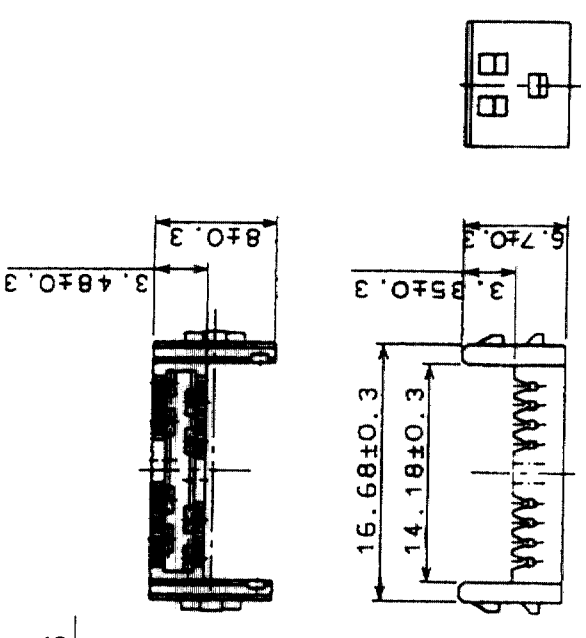
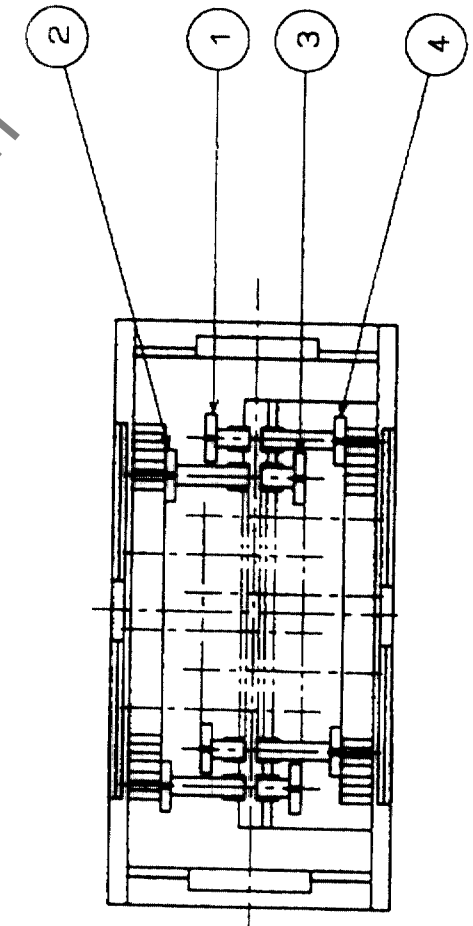
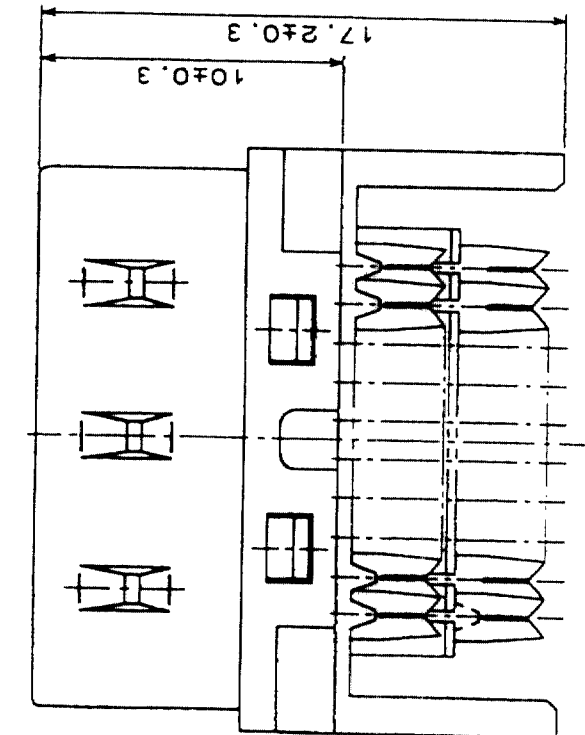
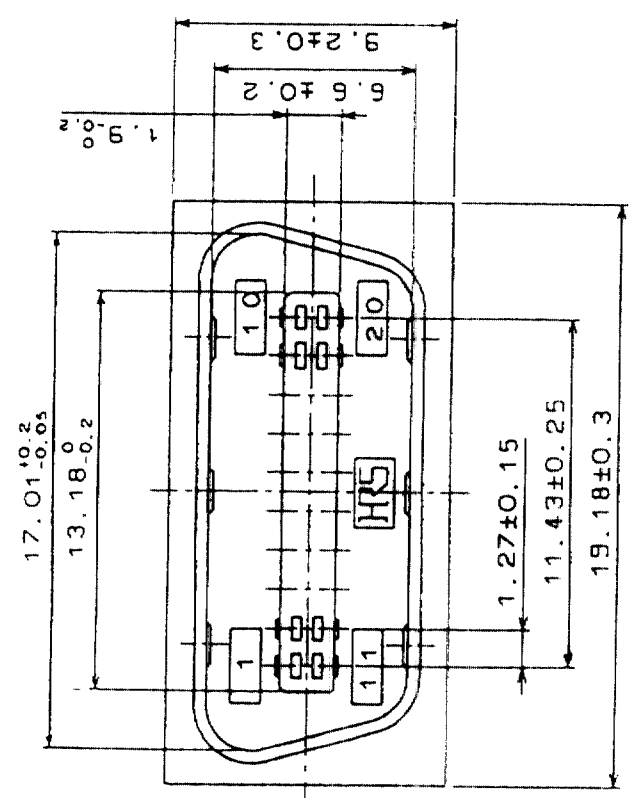


In case of consideration for using Automotive equipment / device which demand high reliability, kindly contact our sales window correspondents.

Sep.1.2021 Copyright 2021 HIROSE ELECTRIC CO., LTD. All Rights Reserved.



HRS DRAWING FOR REFERENCE

| COUNT | DESCRIPTION OF REVISIONS | BY | CHKD | DATE | COUNT | DESCRIPTION OF REVISIONS | BY | CHKD | DATE |
|-------|--------------------------|----|------|------|-------|--------------------------|----|------|------|
| | | | | | | | | | |
| | | | | | | | | | |

| NO. | MATERIAL | FINISH, REMARKS | NO. | MATERIAL | FINISH, REMARKS |
|-----|-----------------|------------------------------|-----|----------|----------------------|
| 4 | PHOSPHOR BRONZE | SELECTIVE GOLD PLATING 0.2μm | 8 | PBT | UL94V-0(BLACK) |
| 3 | PHOSPHOR BRONZE | SELECTIVE GOLD PLATING 0.2μm | 7 | PBT | UL94V-0(BLACK) |
| 2 | PHOSPHOR BRONZE | SELECTIVE GOLD PLATING 0.2μm | 6 | STEEL | NICKEL PLATING |
| 1 | PHOSPHOR BRONZE | SELECTIVE GOLD PLATING 0.2μm | 5 | PBT | UL94V-0(MILKY-WHITE) |

| | | | | | |
|----|--------------------|--------------------|-----------------|-----------------|----------|
| CL | DRAWN | DESIGNED | CHECKED | APPROVED | RELEASED |
| | <i>T. Kamegaya</i> | <i>T. Kamegaya</i> | <i>Y. Enomi</i> | <i>H. Murao</i> | |
| | 03.9.20 | 03.9.20 | 03.09.22 | 03.09.22 | |

| | | | | | |
|-------|-------|-------------|-----------------|----------|---------------|
| SCALE | 4 : 1 | DRAWING NO. | EDC3-027477-01 | PART NO. | DX30A-20P(50) |
| UNITS | mm | CODE NO. | CL230-0022-1-50 | FORM NO. | 2.229 |

TO
Q

X-ON Electronics

Largest Supplier of Electrical and Electronic Components

Click to view similar products for [I/O Connectors](#) category:

Click to view products by [Hirose](#) manufacturer:

Other Similar products are found below :

[571763P](#) [58098-0628](#) [72.250.1628.2](#) [72.250.2428.2](#) [74720-0505](#) [76.350.0729.0](#) [76871-1403](#) [FCN-244F080-G/1](#) [FCN-260A9920](#) [MP-5T180MUNNA-005](#) [PCR-E36PM](#) [PCS-XE26MA+](#) [G38A71314B](#) [1571250010](#) [157-22500-3](#) [MS3471L14-19P L/C](#) [192991-0703](#) [172501-4002](#) [172501-6002](#) [FCN-260C008-A/L0](#) [FCN-260C024-AL0](#) [FCN-261Z008](#) [2000314-1](#) [200331-1](#) [PCR-E36FC+](#) [PCS-E28FS+](#) [PCS-XE26SLFD+](#) [PCS-XE26SLFDT+](#) [G730VID08BDC24](#) [HDR-E14MSG1+](#) [U90B2054081210](#) [UE86K842720321](#) [38113800006](#)
[DP3AR020WQ1R200](#) [Z4.102.0680.0](#) [500-1040](#) [500-1052](#) [500-1054](#) [ZP-4008-66L](#) [0709821002](#) [DX40-20P\(55\)](#) [5554841-1](#) [MS3474W18-8P-LC*](#) [SM3106F14S-7S-LC](#) [U90B3054061110](#) [U65-E04-4020](#) [ZPF000000000097891](#) [557-262M2-06C](#) [747360449](#) [10099439-003C-TRLF](#)