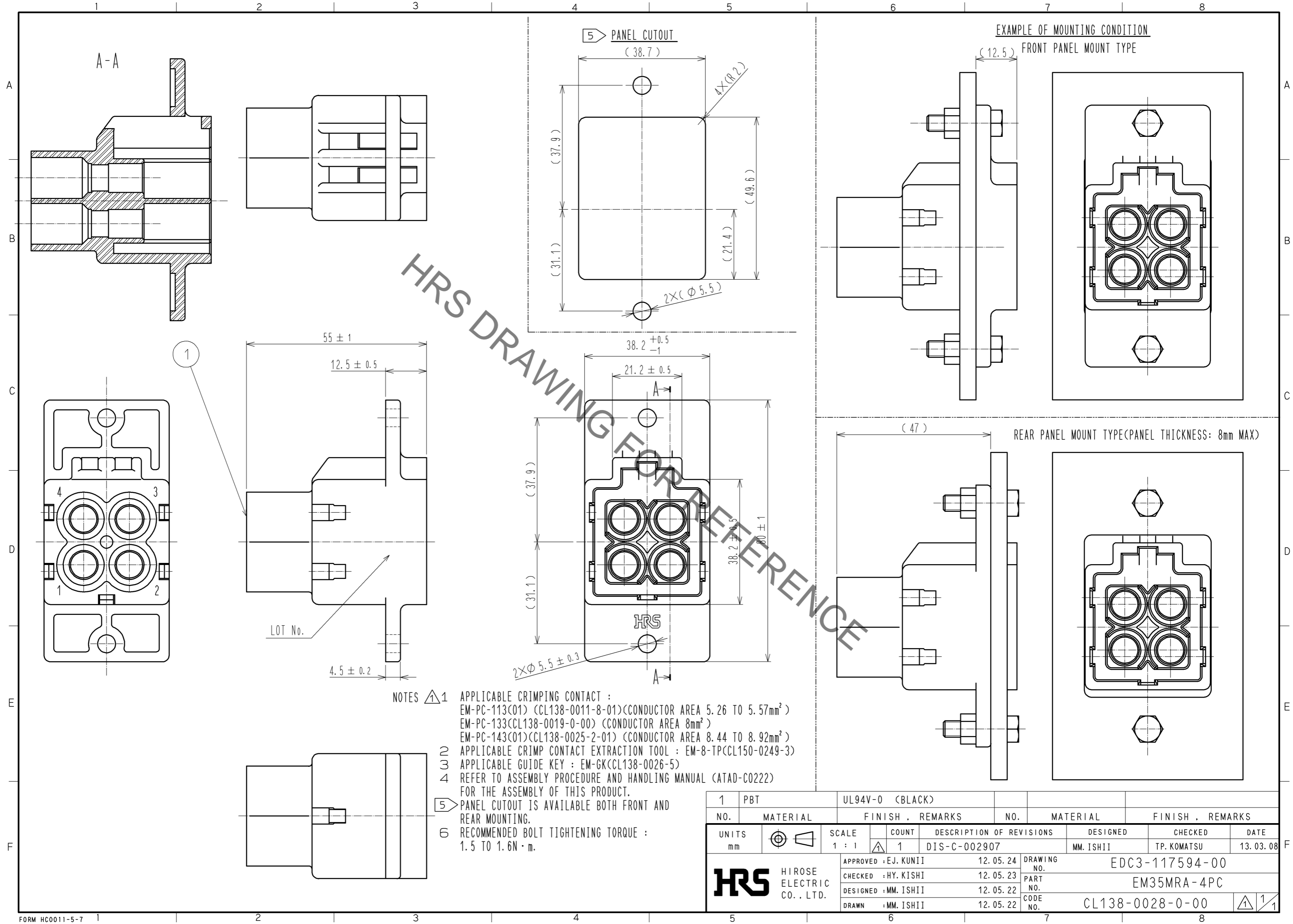


Jun.1.2019 Copyright 2019 HIROSE ELECTRIC CO., LTD. All Rights Reserved.
 In case of consideration for using Automotive equipment / device which demand high reliability, kindly contact our sales window correspondents.



- NOTES
- 1 APPLICABLE CRIMPING CONTACT :
 EM-PC-113(01) (CL138-0011-8-01) (CONDUCTOR AREA 5.26 TO 5.57mm²)
 EM-PC-133 (CL138-0019-0-00) (CONDUCTOR AREA 8mm²)
 EM-PC-143(01) (CL138-0025-2-01) (CONDUCTOR AREA 8.44 TO 8.92mm²)
 - 2 APPLICABLE CRIMP CONTACT EXTRACTION TOOL : EM-8-TP (CL150-0249-3)
 - 3 APPLICABLE GUIDE KEY : EM-GK (CL138-0026-5)
 - 4 REFER TO ASSEMBLY PROCEDURE AND HANDLING MANUAL (ATAD-C0222) FOR THE ASSEMBLY OF THIS PRODUCT.
 - 5 PANEL CUTOUT IS AVAILABLE BOTH FRONT AND REAR MOUNTING.
 - 6 RECOMMENDED BOLT TIGHTENING TORQUE : 1.5 TO 1.6N · m.

1	PBT	UL94V-0 (BLACK)					
NO.	MATERIAL	FINISH . REMARKS	NO.	MATERIAL	FINISH . REMARKS		
UNITS	mm	SCALE	1 : 1	COUNT	1	DESCRIPTION OF REVISIONS	DIS-C-002907
		DESIGNED	MM. ISHII	CHECKED	TP. KOMATSU	DATE	13.03.08
		APPROVED	EJ. KUNII	12.05.24	DRAWING NO.	EDC3-117594-00	
		CHECKED	HY. KISHI	12.05.23	PART NO.	EM35MRA-4PC	
		DESIGNED	MM. ISHII	12.05.22	CODE NO.	CL138-0028-0-00	
		DRAWN	MM. ISHII	12.05.22			

X-ON Electronics

Largest Supplier of Electrical and Electronic Components

Click to view similar products for [Heavy Duty Power Connectors](#) category:

Click to view products by [Hirose](#) manufacturer:

Other Similar products are found below :

[647757-1](#) [6643411-1](#) [6646058-2](#) [6646137-1](#) [6646138-1](#) [6646479-1](#) [6646608-1](#) [6646786-1](#) [6646940-1](#) [6651091-1](#) [6651525-1](#) [6651529-1](#)
[6651788-1](#) [696475-1](#) [73000005059](#) [73000005642](#) [765-15-0080A](#) [765-16-0080B](#) [829992-1](#) [902-77-02113](#) [129-1J](#) [AN0024023](#) [E6374G1](#)
[e6389g2](#) [157-43GW8](#) [MS3117-14AC](#) [1643543-1](#) [1650540-1](#) [1651811-2](#) [1766260-1](#) [1766282-1](#) [1766966-1](#) [1791340000](#) [NLDFT-3-BL-L-](#)
[S120-M40A](#) [NLDFT-N-W-L-C240-M40B](#) [NLS-2-R-C240-M40B](#) [NLS-N-W-C240-M40B](#) [NPS-3-BL-T6](#) [1986615-1](#) [2-1589900-8](#) [2199314-1](#)
[KA8102](#) [9300480317](#) [SBS50BRN#6](#) [29131](#) [29652](#) [1646905-1](#) [1648320-1](#) [1648582-1](#) [1650195-2](#)