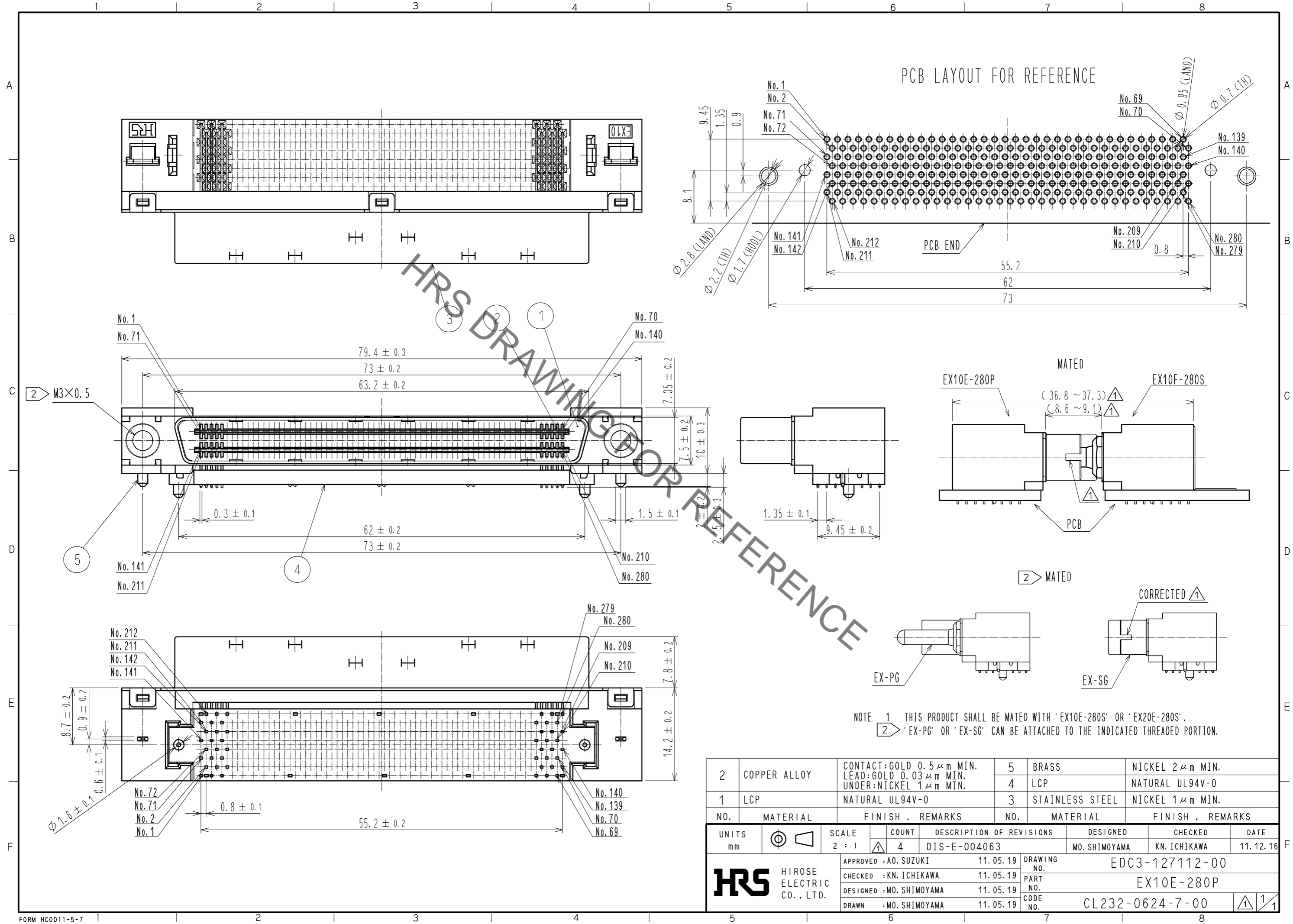


Sep.1.2021 Copyright 2021 HIROSE ELECTRIC CO., LTD. All Rights Reserved.
 In case of consideration for using Automotive equipment / device which demand high reliability, kindly contact our sales window correspondents.



NOTE 1 THIS PRODUCT SHALL BE MATED WITH 'EX10E-280S' OR 'EX20E-280S'.
 2 'EX-PG' OR 'EX-SG' CAN BE ATTACHED TO THE INDICATED THREADED PORTION.

2	COPPER ALLOY	CONTACT:GOLD 0.5 μm MIN. LEAD:GOLD 0.03 μm MIN. UNDER:NICKEL 1 μm MIN.	5	BRASS	NICKEL 2 μm MIN.		
1	LCP	NATURAL UL94V-0	4	LCP	NATURAL UL94V-0		
			3	STAINLESS STEEL	NICKEL 1 μm MIN.		
NO.	MATERIAL	FINISH . REMARKS	NO.	MATERIAL	FINISH . REMARKS		
UNITS		SCALE	COUNT	DESCRIPTION OF REVISIONS	DESIGNED	CHECKED	DATE
mm		2 : 1	4	DIS-E-004063	MO. SHIMOYAMA	KN. ICHIKAWA	11. 12. 16
HRS HIROSE ELECTRIC CO., LTD.		APPROVED : AO. SUZUKI	11. 05. 19	DRAWING NO. EDC3-127112-00			
		CHECKED : KN. ICHIKAWA	11. 05. 19	PART NO. EX10E-280P			
		DESIGNED : MO. SHIMOYAMA	11. 05. 19	CODE NO. CL232-0624-7-00			
		DRAWN : MO. SHIMOYAMA	11. 05. 19			1/1	

X-ON Electronics

Largest Supplier of Electrical and Electronic Components

Click to view similar products for [I/O Connectors](#) category:

Click to view products by [Hirose](#) manufacturer:

Other Similar products are found below :

[571763P](#) [58098-0628](#) [72.250.1628.2](#) [72.250.2428.2](#) [74720-0505](#) [76.350.0729.0](#) [76871-1403](#) [FCN-244F080-G/1](#) [FCN-260A9920](#) [PCR-E36PM](#) [PCS-XE26MA+](#) [G38A71314B](#) [1571250010](#) [157-22500-3](#) [MS3471L14-19P L/C](#) [192991-0703](#) [172501-4002](#) [172501-6002](#) [FCN-260C008-A/L0](#) [FCN-260C024-AL0](#) [FCN-261Z008](#) [2000314-1](#) [200331-1](#) [PCR-E36FC+](#) [PCS-E28FS+](#) [PCS-XE26SLFD+](#) [PCS-XE26SLFDT+](#) [G730VID08BDC24](#) [U90B2054081210](#) [UE86K842720321](#) [38113800006](#) [DP3AR020WQ1R200](#) [Z4.102.0680.0](#) [500-1040](#) [500-1052](#) [500-1054](#) [ZP-4008-66L](#) [0709821002](#) [DX40-20P\(55\)](#) [5554841-1](#) [MS3474W18-8P-LC*](#) [SM3106F14S-7S-LC](#) [U90B3054061110](#) [U65-E04-4020](#) [ZPF000000000097891](#) [557-262M2-06C](#) [747360449](#) [10099439-003C-TRLF](#) [10137239-0021LF](#) [E9320-001-01](#)