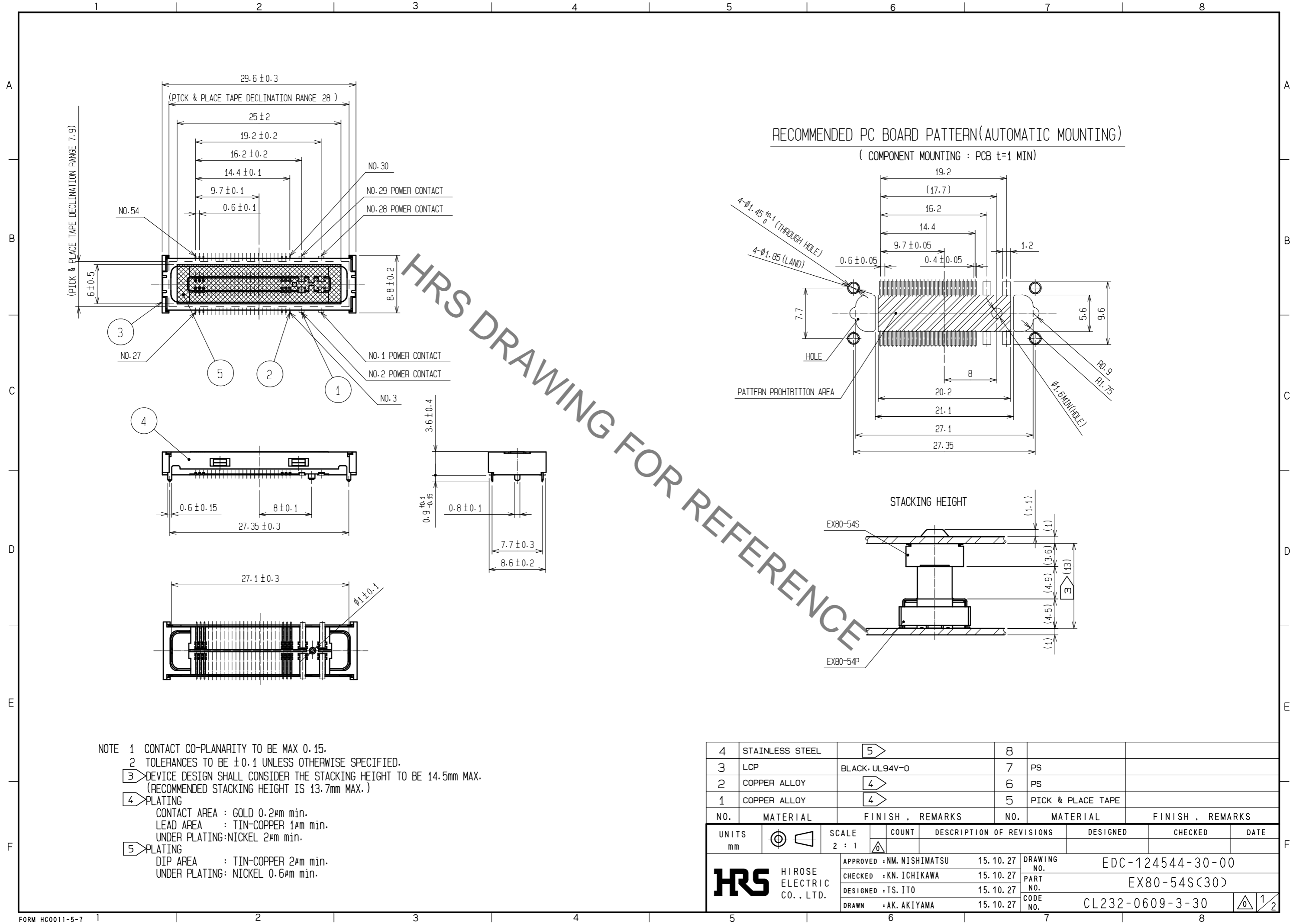


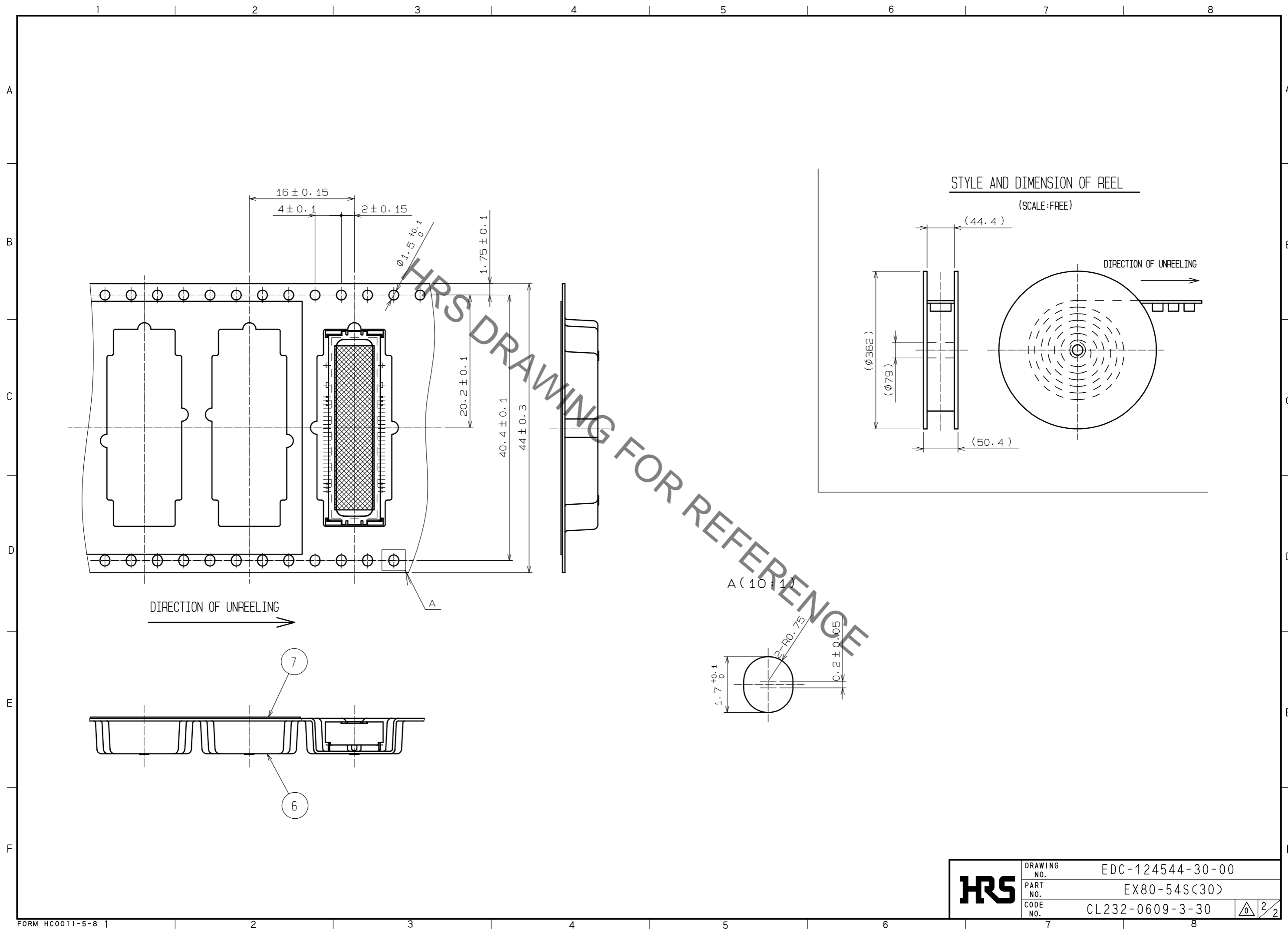
May.1.2019 Copyright 2019 HIROSE ELECTRIC CO., LTD. All Rights Reserved.
 In case of consideration for using Automotive equipment / device which demand high reliability, kindly contact our sales window correspondents.



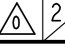
NOTE 1 CONTACT CO-PLANARITY TO BE MAX 0.15.
 2 TOLERANCES TO BE ±0.1 UNLESS OTHERWISE SPECIFIED.
 3 DEVICE DESIGN SHALL CONSIDER THE STACKING HEIGHT TO BE 14.5mm MAX.
 (RECOMMENDED STACKING HEIGHT IS 13.7mm MAX.)
 4 PLATING
 CONTACT AREA : GOLD 0.2µm min.
 LEAD AREA : TIN-COPPER 1µm min.
 UNDER PLATING: NICKEL 2µm min.
 5 PLATING
 DIP AREA : TIN-COPPER 2µm min.
 UNDER PLATING: NICKEL 0.6µm min.

4	STAINLESS STEEL	5	8		
3	LCP	BLACK, UL94V-0	7	PS	
2	COPPER ALLOY	4	6	PS	
1	COPPER ALLOY	4	5	PICK & PLACE TAPE	
NO.	MATERIAL	FINISH . REMARKS	NO.	MATERIAL	FINISH . REMARKS
UNITS	mm	SCALE	2 : 1	COUNT	DESCRIPTION OF REVISIONS
		APPROVED	: NM. NISHIMATSU	15.10.27	DESIGNED
		CHECKED	: KN. ICHIKAWA	15.10.27	CHECKED
		DESIGNED	: TS. ITO	15.10.27	DATE
		DRAWN	: AK. AKIYAMA	15.10.27	
DRAWING NO.			EDC-124544-30-00		
PART NO.			EX80-54S(30)		
CODE NO.			CL232-0609-3-30		

May.1.2019 Copyright 2019 HIROSE ELECTRIC CO., LTD. All Rights Reserved.
 In case of consideration for using Automotive equipment / device which demand high reliability, kindly contact our sales window correspondents.



STYLE AND DIMENSION OF REEL
 (SCALE:FREE)

HRS	DRAWING NO.	EDC-124544-30-00	 2/2
	PART NO.	EX80-54S(30)	
	CODE NO.	CL232-0609-3-30	

X-ON Electronics

Largest Supplier of Electrical and Electronic Components

Click to view similar products for [I/O Connectors](#) category:

Click to view products by [Hirose](#) manufacturer:

Other Similar products are found below :

[571763P](#) [58098-0628](#) [72.250.1628.2](#) [72.250.2428.2](#) [74720-0505](#) [76.350.0729.0](#) [76871-1403](#) [FCN-244F080-G/1](#) [FCN-260A9920](#) [PCR-E36PM](#) [PCS-XE26MA+](#) [G38A71314B](#) [1571250010](#) [157-22500-3](#) [MS3471L14-19P L/C](#) [192991-0703](#) [172501-4002](#) [172501-6002](#) [FCN-260C008-A/L0](#) [FCN-260C024-AL0](#) [FCN-261Z008](#) [2000314-1](#) [200331-1](#) [PCR-E36FC+](#) [PCS-E28FS+](#) [PCS-XE26SLFD+](#) [PCS-XE26SLFDT+](#) [G730VID08BDC24](#) [U90B2054081210](#) [UE86K842720321](#) [38113800006](#) [DP3AR020WQ1R200](#) [Z4.102.0680.0](#) [500-1040](#) [500-1052](#) [500-1054](#) [ZP-4008-66L](#) [0709821002](#) [DX40-20P\(55\)](#) [5554841-1](#) [MS3474W18-8P-LC*](#) [SM3106F14S-7S-LC](#) [U90B3054061110](#) [U65-E04-4020](#) [ZPF000000000097891](#) [557-262M2-06C](#) [747360449](#) [10099439-003C-TRLF](#) [10137239-0021LF](#) [E9320-001-01](#)