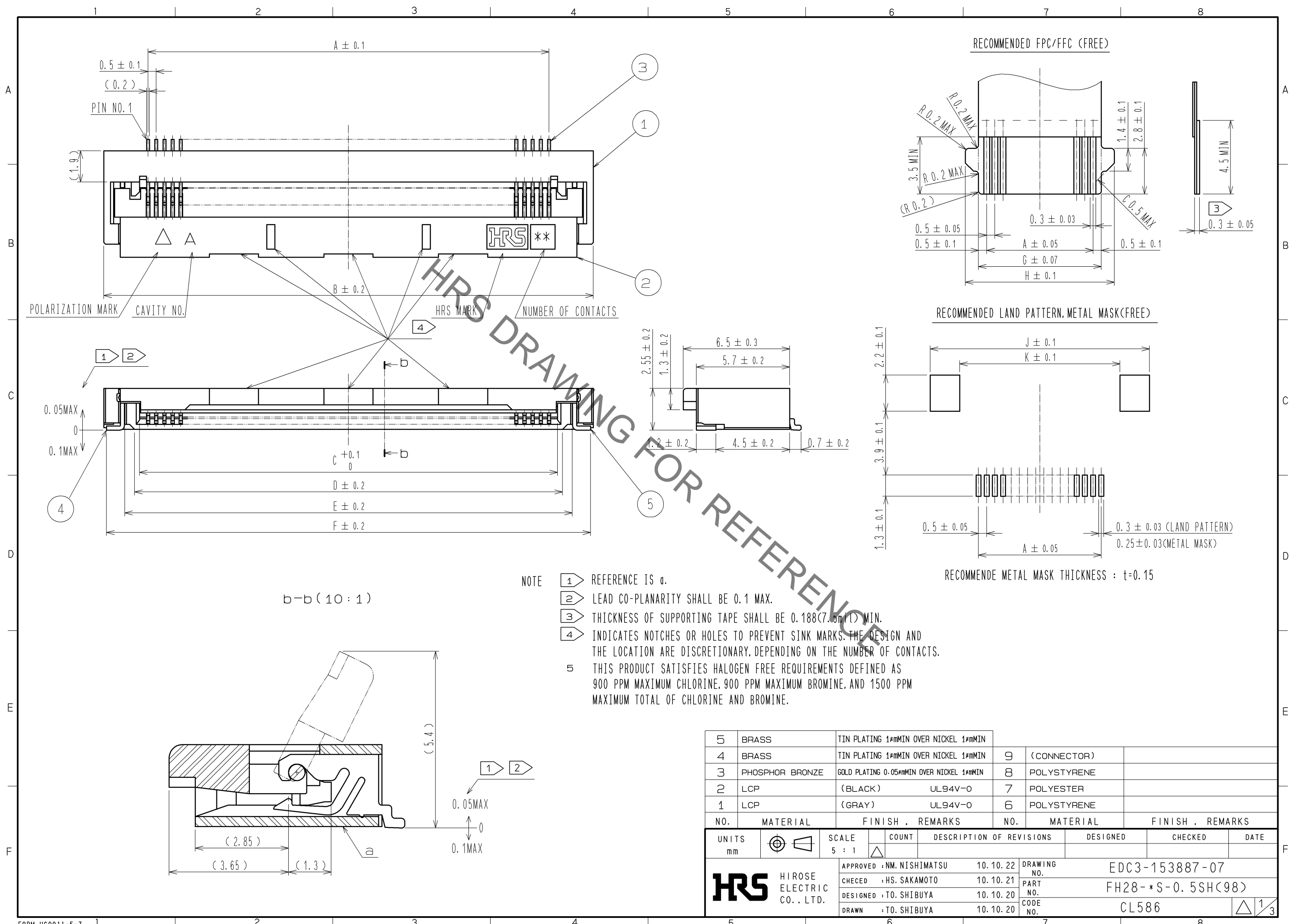
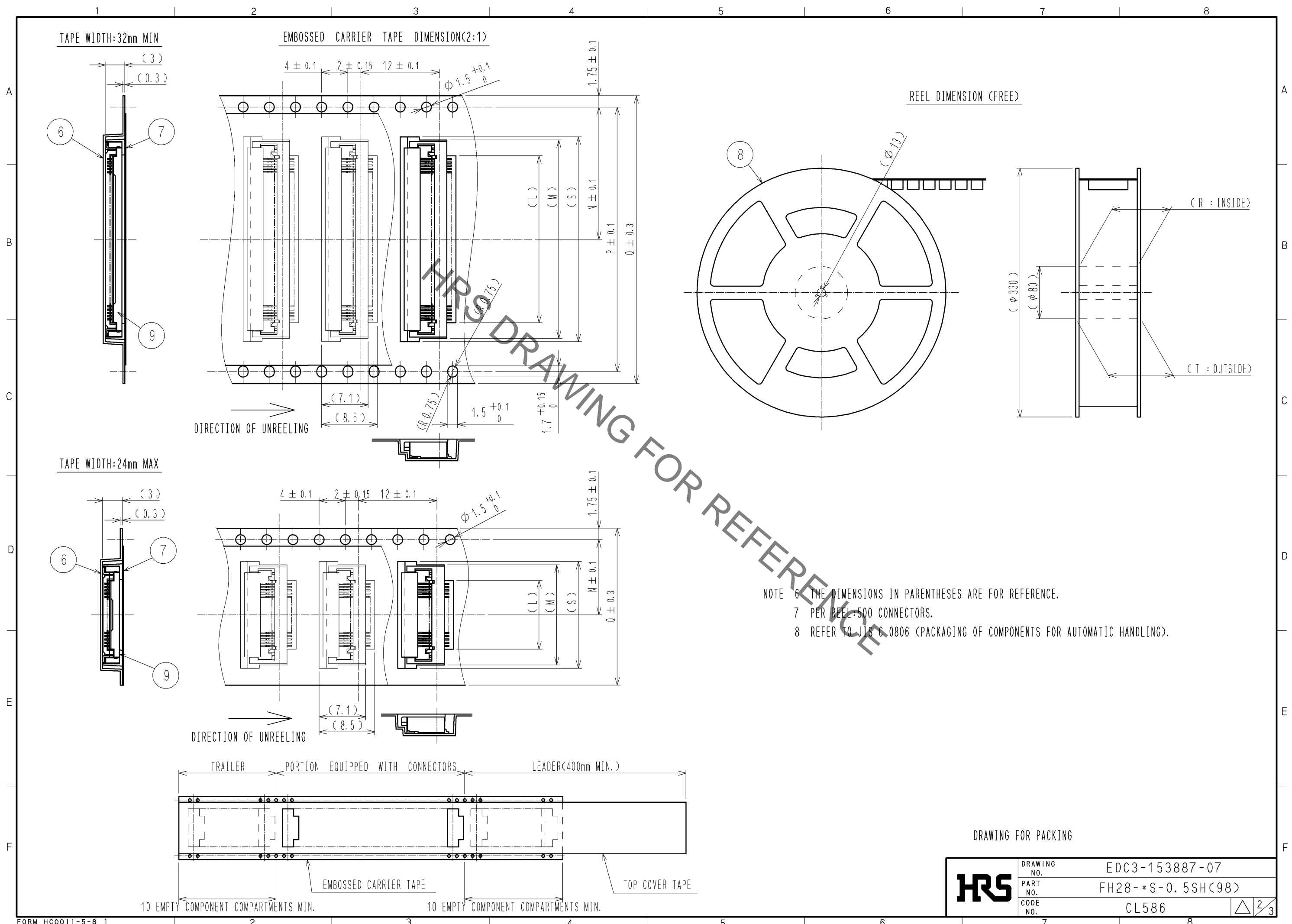


Dec.1.2021 Copyright 2021 HIROSE ELECTRIC CO., LTD. All Rights Reserved.  
In case of consideration for using Automotive equipment / device which demand high reliability, kindly contact our sales window correspondents.



5	BRASS	TIN PLATING 1#mMIN OVER NICKEL 1#mMIN						
4	BRASS	TIN PLATING 1#mMIN OVER NICKEL 1#mMIN	9	(CONNECTOR)				
3	PHOSPHOR BRONZE	GOLD PLATING 0.05#mMIN OVER NICKEL 1#mMIN	8	POLYSTYRENE				
2	LCP	(BLACK) UL94V-0	7	POLYESTER				
1	LCP	(GRAY) UL94V-0	6	POLYSTYRENE				
NO.	MATERIAL	FINISH . REMARKS	NO.	MATERIAL	FINISH . REMARKS			
UNITS	mm	SCALE	5 : 1	COUNT	DESCRIPTION OF REVISIONS	DESIGNED	CHECKED	DATE
APPROVED : NM. NISHIMATSU		10.10.22		DRAWING NO.		EDC3-153887-07		
CHECKED : HS. SAKAMOTO		10.10.21		PART NO.		FH28-*S-0.5SH(98)		
DESIGNED : TO. SHIBUYA		10.10.20		CODE NO.		CL586		
DRAWN : TO. SHIBUYA		10.10.20						

Dec.1.2021 Copyright 2021 HIROSE ELECTRIC CO., LTD. All Rights Reserved.  
 In case of consideration for using Automotive equipment / device which demand high reliability, kindly contact our sales window correspondents.



DRAWING FOR PACKING

<b>HRS</b>	DRAWING NO.	EDC3-153887-07
	PART NO.	FH28-*S-0.5SH(98)
	CODE NO.	CL586
		$\triangle$ 2/3

Dec.1.2021 Copyright 2021 HIROSE ELECTRIC CO., LTD. All Rights Reserved.  
In case of consideration for using Automotive equipment / device which demand high reliability, kindly contact our sales window correspondents.

DIMENSION TABLE OF CONNECTOR, FPC, FFC, LAND PATTERN AND METAL MASK

PART NO.	CODE NO.	*	A	B	C	D	E	F	G	H	J	K
FH28-10S-0.5SH(98)	CL586-1861-4-98	10	4.5	9.9	5.57	6.15	7.35	9.58	5.5	7.1	10.6	7
FH28-40S-0.5SH(98)	CL586-1803-8-98	40	19.5	24.9	20.57	21.15	22.35	24.58	20.5	22.1	25.6	22
FH28-45S-0.5SH(98)	CL586-1848-6-98	45	22	27.4	23.07	23.65	24.85	27.08	23	24.6	28.1	24.5
FH28-50S-0.5SH(98)	CL586-1801-2-98	50	24.5	29.9	25.57	26.15	27.35	29.58	25.5	27.1	30.6	27
FH28-55S-0.5SH(98)	CL586-1800-0-98	55	27	32.4	28.07	28.65	29.85	32.08	28	29.6	33.1	29.5
FH28-60S-0.5SH(98)	CL586-1811-6-98	60	29.5	34.9	30.57	31.15	32.35	34.58	30.5	32.1	35.6	32

DIMENSION TABLE OF DRAWING FOR PACKING

PART NO.	CODE NO.	*	L	M	N	P	Q	R	T	S
FH28-10S-0.5SH(98)	CL586-1861-4-98	10	5.5	10.3	11.5	-	24	25.4	29.4	11.3
FH28-40S-0.5SH(98)	CL586-1803-8-98	40	20.5	25.3	20.2	40.4	44	45.4	49.4	-
FH28-45S-0.5SH(98)	CL586-1848-6-98	45	23	27.8	20.2	40.4	44	45.4	49.4	28.8
FH28-50S-0.5SH(98)	CL586-1801-2-98	50	25.5	30.3	20.2	40.4	44	45.4	49.4	-
FH28-55S-0.5SH(98)	CL586-1800-0-98	55	28	32.8	20.2	40.4	44	45.4	49.4	-
FH28-60S-0.5SH(98)	CL586-1811-6-98	60	30.5	35.3	26.2	52.4	56	57.4	61.4	-

\* : NUMBER OF CONTACTS

<b>HRS</b>	DRAWING NO.	EDC3-153887-07
	PART NO.	FH28-*S-0.5SH(98)
	CODE NO.	CL586
		△ 3/3

## X-ON Electronics

Largest Supplier of Electrical and Electronic Components

*Click to view similar products for [FFC & FPC Connectors](#) category:*

*Click to view products by [Hirose](#) manufacturer:*

Other Similar products are found below :

[K-FC20](#) [FH29B-80S-0.2SHW\(99\)](#) [FPH-2022G](#) [AYF332735](#) [52610-1075](#) [52610-1275](#) [52610-1934](#) [501864-3091-TR225](#) [086222026001800](#)  
[52610-0675](#) [62684-36210E9ALF](#) [52746-1671-TR250](#) [10051922-2810EHLF](#) [6-520415-9](#) [SFV6R-1STE9HLF](#) [XF3M-2915-1B-R100](#)  
[1658549-1](#) [46214008010800](#) [AYF534065TA](#) [AYF351525](#) [086212040340800+](#) [AYF530365TA](#) [67000-014LF](#) [67000-004LF](#)  
[006207341915000+](#) [DS1020-19RT1D](#) [67000-003LF](#) [67000-011LF](#) [67000-016LF](#) [HFW14R-2STE9LF](#) [SFV32R-2STBE9HLF](#) [SFW12R-](#)  
[5STE9LF](#) [SFW18R-1STAE9LF](#) [SFW4R-5STE9LF](#) [52807-0430](#) [046283021002868+](#) [THD1015-8CL-SN](#) [67000-006LF](#) [502250-8027](#)  
[104267-9617](#) [66987-011LF](#) [AYF362535](#) [F0501-T-50-20T-R](#) [HFW8S-2STAE1HLF](#) [67000-008LF](#) [67000-012LF](#) [ECC576069EU](#) [F1002-B-](#)  
[20-20T-R](#) [HFW15S-2STAE1HLF](#) [0781271110](#)