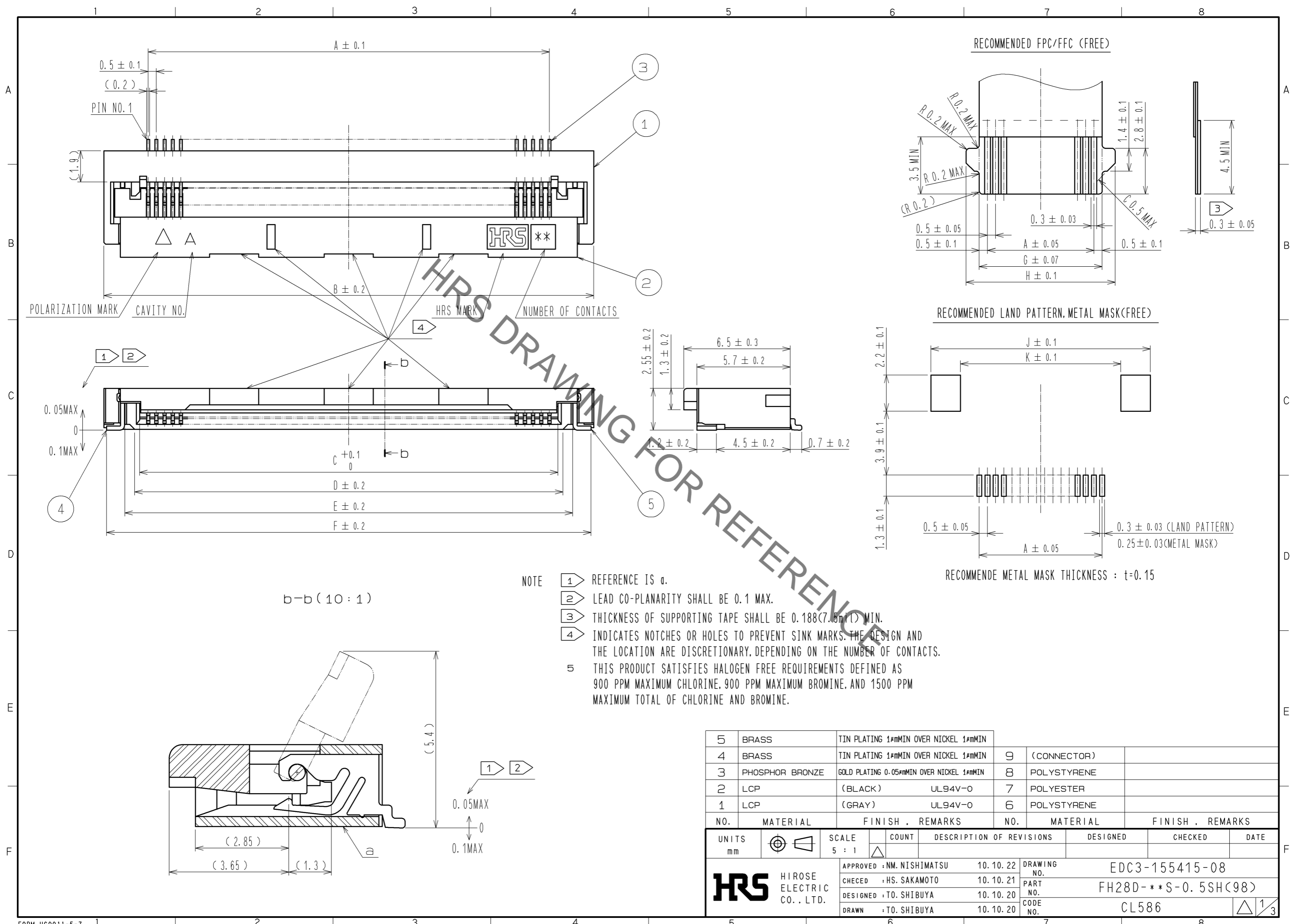
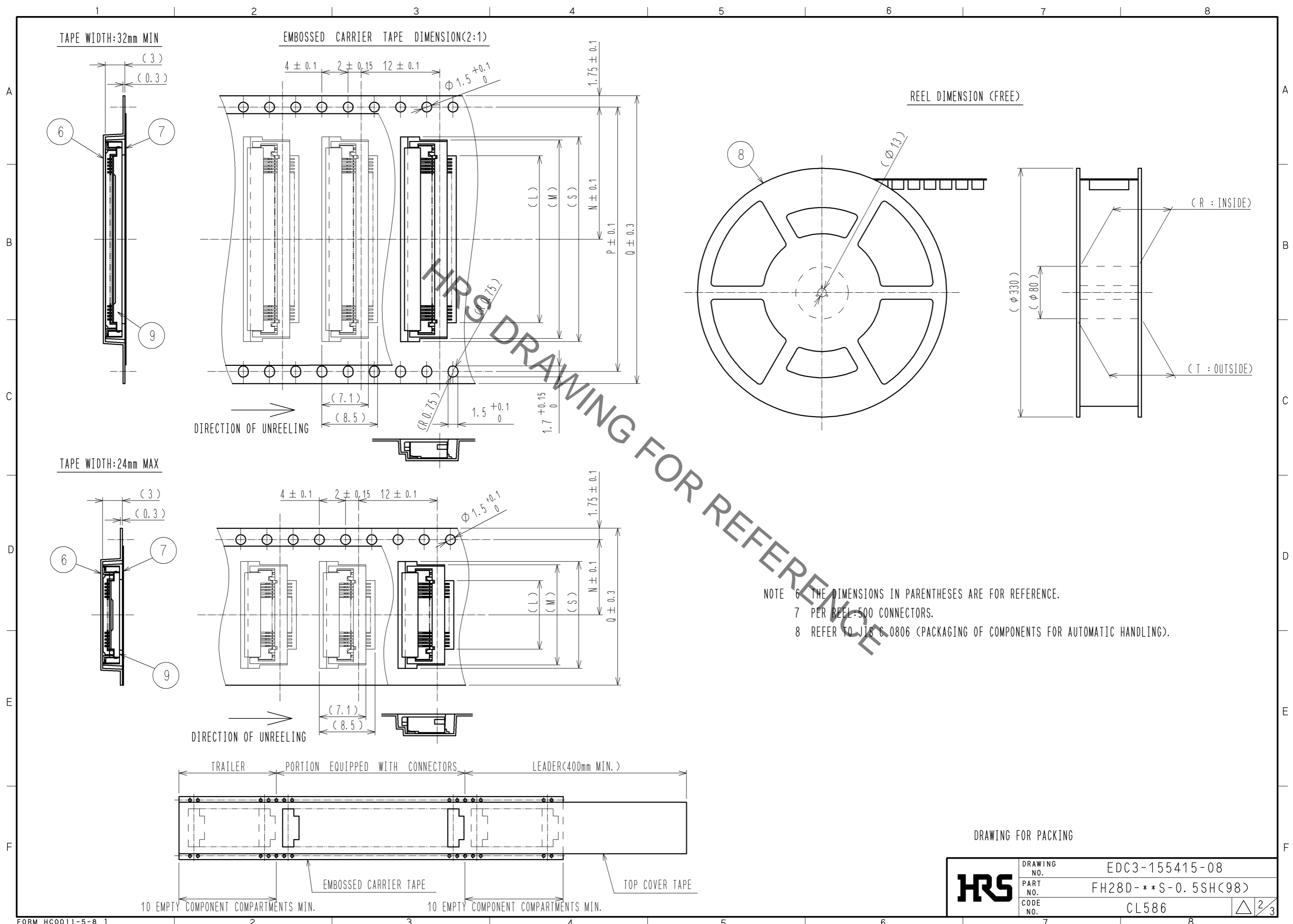


Jun.1.2021 Copyright 2021 HIROSE ELECTRIC CO., LTD. All Rights Reserved.
In case of consideration for using Automotive equipment / device which demand high reliability, kindly contact our sales window correspondents.



5	BRASS	TIN PLATING 1#MMIN OVER NICKEL 1#MMIN						
4	BRASS	TIN PLATING 1#MMIN OVER NICKEL 1#MMIN	9	(CONNECTOR)				
3	PHOSPHOR BRONZE	GOLD PLATING 0.05#MMIN OVER NICKEL 1#MMIN	8	POLYSTYRENE				
2	LCP	(BLACK) UL94V-0	7	POLYESTER				
1	LCP	(GRAY) UL94V-0	6	POLYSTYRENE				
NO.	MATERIAL	FINISH . REMARKS	NO.	MATERIAL	FINISH . REMARKS			
UNITS	mm	SCALE	5 : 1	COUNT	DESCRIPTION OF REVISIONS	DESIGNED	CHECKED	DATE
APPROVED : NM. NISHIMATSU		10.10.22		DRAWING NO.		EDC3-155415-08		
CHECKED : HS. SAKAMOTO		10.10.21		PART NO.		FH28D-***S-0.5SH(98)		
DESIGNED : TO. SHIBUYA		10.10.20		CODE NO.		CL586		
DRAWN : TO. SHIBUYA		10.10.20						

Jun.1.2021 Copyright 2021 HIROSE ELECTRIC CO., LTD. All Rights Reserved.
 In case of consideration for using Automotive equipment / device which demand high reliability, kindly contact our sales window correspondents.



NOTE 6 THE DIMENSIONS IN PARENTHESES ARE FOR REFERENCE.
 7 PER REEL: 500 CONNECTORS.
 8 REFER TO JIS C 0806 (PACKAGING OF COMPONENTS FOR AUTOMATIC HANDLING).

DRAWING FOR PACKING

HRS	DRAWING NO.	EDC3-155415-08	2/3
	PART NO.	FH28D-**S-0.5SH(98)	
	CODE NO.	CL586	

Jun.1.2021 Copyright 2021 HIROSE ELECTRIC CO., LTD. All Rights Reserved.
 In case of consideration for using Automotive equipment / device which demand high reliability, kindly contact our sales window correspondents.

DIMENSION TABLE OF CONNECTOR, FPC, FFC, LAND PATTERN AND METAL MASK

PART NO.	CODE NO.	*	A	B	C	D	E	F	G	H	J	K
FH28D-20S-0.5SH(98)	CL586-1823-5-98	20	9.5	14.9	10.57	11.15	12.35	14.58	10.5	12.1	15.6	12
FH28D-28S-0.5SH(98)	CL586-1835-4-98	28	13.5	18.9	14.57	15.15	16.35	18.58	14.5	16.1	19.6	16
FH28D-30S-0.5SH(98)	CL586-1827-6-98	30	14.5	19.9	15.57	16.15	17.35	19.58	15.5	17.1	20.6	17
FH28D-50S-0.5SH(98)	CL586-1808-1-98	50	24.5	29.9	25.57	26.15	27.35	29.58	25.5	27.1	30.6	27
FH28D-55S-0.5SH(98)	CL586-1821-0-98	55	27	32.4	28.07	28.65	29.85	32.08	28	29.6	33.1	29.5
FH28D-64S-0.5SH(98)	CL586-1813-1-98	64	31.5	36.9	32.57	33.15	34.35	36.58	32.5	34.1	37.6	34
FH28D-68S-0.5SH(98)	CL586-1819-8-98	68	33.5	38.9	34.57	35.15	36.35	38.58	34.5	36.1	39.6	36
FH28D-74S-0.5SH(98)	CL586-1828-9-98	74	36.5	41.9	37.57	38.15	39.35	41.58	37.5	39.1	42.6	39

DIMENSION TABLE OF DRAWING FOR PACKING

PART NO.	CODE NO.	*	L	M	N	P	Q	R	T	S
FH28D-20S-0.5SH(98)	CL586-1823-5-98	20	10.5	15.3	11.5	-	24	25.4	29.4	16.3
FH28D-28S-0.5SH(98)	CL586-1835-4-98	28	14.5	19.3	14.2	28.4	32	33.4	37.4	20.3
FH28D-30S-0.5SH(98)	CL586-1827-6-98	30	15.5	20.3	14.2	28.4	32	33.4	37.4	21.3
FH28D-50S-0.5SH(98)	CL586-1808-1-98	50	25.5	30.3	20.2	40.4	44	45.4	49.4	-
FH28D-55S-0.5SH(98)	CL586-1821-0-98	55	28	32.8	20.2	40.4	44	45.4	49.4	-
FH28D-64S-0.5SH(98)	CL586-1813-1-98	64	32.5	37.3	26.2	52.4	56	57.4	61.4	-
FH28D-68S-0.5SH(98)	CL586-1819-8-98	68	34.5	39.3	26.2	52.4	56	57.4	61.4	-
FH28D-74S-0.5SH(98)	CL586-1828-9-98	74	37.5	42.3	26.2	52.4	56	57.4	61.4	43.3

* : NUMBER OF CONTACTS

HRS	DRAWING NO.	EDC3-155415-08
	PART NO.	FH28D-**S-0.5SH(98)
	CODE NO.	CL586
		△ 3/3

X-ON Electronics

Largest Supplier of Electrical and Electronic Components

Click to view similar products for [FFC & FPC Connectors](#) category:

Click to view products by [Hirose](#) manufacturer:

Other Similar products are found below :

[K-FC20](#) [FH29B-80S-0.2SHW\(99\)](#) [FPH-2022G](#) [AYF332735](#) [52610-1075](#) [52610-1275](#) [52610-1934](#) [501864-3091-TR225](#) [086222026001800](#)
[52610-0675](#) [62684-36210E9ALF](#) [52746-1671-TR250](#) [10051922-2810EHLF](#) [6-520415-9](#) [SFV6R-1STE9HLF](#) [XF3M-2915-1B-R100](#)
[1658549-1](#) [46214008010800](#) [AYF534065TA](#) [AYF351525](#) [086212040340800+](#) [AYF530365TA](#) [67000-014LF](#) [67000-004LF](#)
[006207341915000+](#) [DS1020-19RT1D](#) [67000-003LF](#) [67000-011LF](#) [67000-016LF](#) [HFW14R-2STE9LF](#) [SFV32R-2STBE9HLF](#) [SFW12R-](#)
[5STE9LF](#) [SFW18R-1STAE9LF](#) [SFW4R-5STE9LF](#) [52807-0430](#) [046283021002868+](#) [THD1015-8CL-SN](#) [67000-006LF](#) [502250-8027](#)
[104267-9617](#) [66987-011LF](#) [AYF362535](#) [F0501-T-50-20T-R](#) [HFW8S-2STAE1HLF](#) [67000-008LF](#) [67000-012LF](#) [ECC576069EU](#) [F1002-B-](#)
[20-20T-R](#) [HFW15S-2STAE1HLF](#) [0781271110](#)