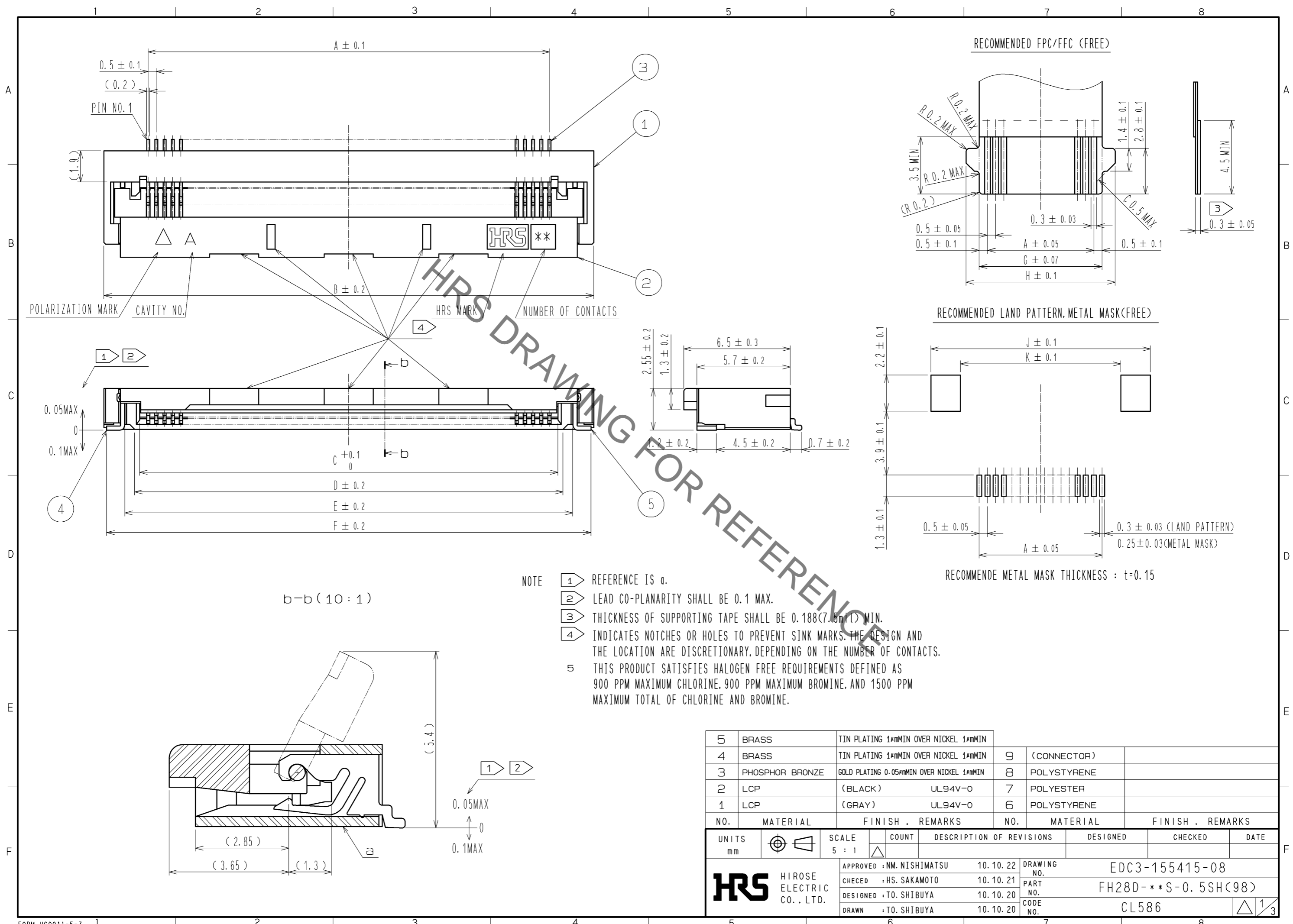
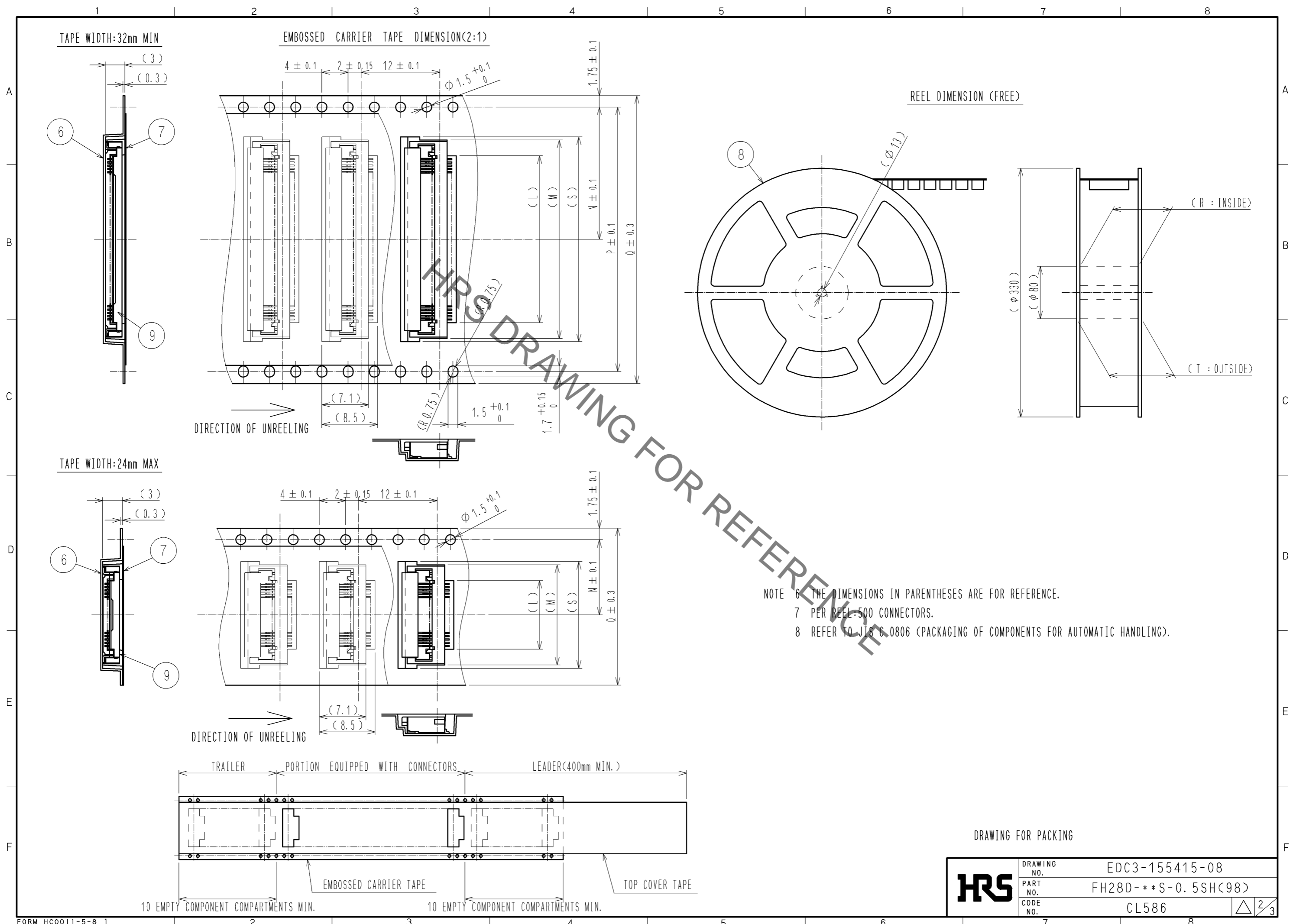


Aug.1.2021 Copyright 2021 HIROSE ELECTRIC CO., LTD. All Rights Reserved.  
In case of consideration for using Automotive equipment / device which demand high reliability, kindly contact our sales window correspondents.



| 5                                    | BRASS           | TIN PLATING 1#mMIN OVER NICKEL 1#mMIN     |          |                              |                          |          |         |      |
|--------------------------------------|-----------------|---|----------|------------------------------|--------------------------|----------|---------|------|
| 4                                    | BRASS           | TIN PLATING 1#mMIN OVER NICKEL 1#mMIN     | 9        | (CONNECTOR)                  |                          |          |         |      |
| 3                                    | PHOSPHOR BRONZE | GOLD PLATING 0.05#mMIN OVER NICKEL 1#mMIN | 8        | POLYSTYRENE                  |                          |          |         |      |
| 2                                    | LCP             | (BLACK) UL94V-0                           | 7        | POLYESTER                    |                          |          |         |      |
| 1                                    | LCP             | (GRAY) UL94V-0                            | 6        | POLYSTYRENE                  |                          |          |         |      |
| NO.                                  | MATERIAL        | FINISH . REMARKS                          | NO.      | MATERIAL                     | FINISH . REMARKS         |          |         |      |
| UNITS                                | mm              | SCALE                                     | 5 : 1    | COUNT                        | DESCRIPTION OF REVISIONS | DESIGNED | CHECKED | DATE |
| <b>HRS</b> HIROSE ELECTRIC CO., LTD. |                 | APPROVED : NM. NISHIMATSU                 | 10.10.22 | DRAWING NO. EDC3-155415-08   |                          |          |         |      |
|                                      |                 | CHECKED : HS. SAKAMOTO                    | 10.10.21 | PART NO. FH28D-**S-0.5SH(98) |                          |          |         |      |
|                                      |                 | DESIGNED : TO. SHIBUYA                    | 10.10.20 | CODE NO. CL586               |                          |          |         |      |
|                                      |                 | DRAWN : TO. SHIBUYA                       | 10.10.20 |                              |                          |          |         |      |

Aug.1.2021 Copyright 2021 HIROSE ELECTRIC CO., LTD. All Rights Reserved.  
 In case of consideration for using Automotive equipment / device which demand high reliability, kindly contact our sales window correspondents.



NOTE 6 THE DIMENSIONS IN PARENTHESES ARE FOR REFERENCE.  
 7 PER REEL:500 CONNECTORS.  
 8 REFER TO JIS C 0806 (PACKAGING OF COMPONENTS FOR AUTOMATIC HANDLING).

DRAWING FOR PACKING

|            |             |                     |
|------------|-------------|---------------------|
| <b>HRS</b> | DRAWING NO. | EDC3-155415-08      |
|            | PART NO.    | FH28D-**S-0.5SH(98) |
|            | CODE NO.    | CL586               |
|            |             | △ 2/3               |

Aug.1.2021 Copyright 2021 HIROSE ELECTRIC CO., LTD. All Rights Reserved.  
 In case of consideration for using Automotive equipment / device which demand high reliability, kindly contact our sales window correspondents.

DIMENSION TABLE OF CONNECTOR, FPC, FFC, LAND PATTERN AND METAL MASK

| PART NO.            | CODE NO.        | *  | A    | B    | C     | D     | E     | F     | G    | H    | J    | K    |
|---------------------|-----------------|----|------|------|-------|-------|-------|-------|------|------|------|------|
| FH28D-20S-0.5SH(98) | CL586-1823-5-98 | 20 | 9.5  | 14.9 | 10.57 | 11.15 | 12.35 | 14.58 | 10.5 | 12.1 | 15.6 | 12   |
| FH28D-28S-0.5SH(98) | CL586-1835-4-98 | 28 | 13.5 | 18.9 | 14.57 | 15.15 | 16.35 | 18.58 | 14.5 | 16.1 | 19.6 | 16   |
| FH28D-30S-0.5SH(98) | CL586-1827-6-98 | 30 | 14.5 | 19.9 | 15.57 | 16.15 | 17.35 | 19.58 | 15.5 | 17.1 | 20.6 | 17   |
| FH28D-50S-0.5SH(98) | CL586-1808-1-98 | 50 | 24.5 | 29.9 | 25.57 | 26.15 | 27.35 | 29.58 | 25.5 | 27.1 | 30.6 | 27   |
| FH28D-55S-0.5SH(98) | CL586-1821-0-98 | 55 | 27   | 32.4 | 28.07 | 28.65 | 29.85 | 32.08 | 28   | 29.6 | 33.1 | 29.5 |
| FH28D-64S-0.5SH(98) | CL586-1813-1-98 | 64 | 31.5 | 36.9 | 32.57 | 33.15 | 34.35 | 36.58 | 32.5 | 34.1 | 37.6 | 34   |
| FH28D-68S-0.5SH(98) | CL586-1819-8-98 | 68 | 33.5 | 38.9 | 34.57 | 35.15 | 36.35 | 38.58 | 34.5 | 36.1 | 39.6 | 36   |
| FH28D-74S-0.5SH(98) | CL586-1828-9-98 | 74 | 36.5 | 41.9 | 37.57 | 38.15 | 39.35 | 41.58 | 37.5 | 39.1 | 42.6 | 39   |

DIMENSION TABLE OF DRAWING FOR PACKING

| PART NO.            | CODE NO.        | *  | L    | M    | N    | P    | Q  | R    | T    | S    |
|---------------------|-----------------|----|------|------|------|------|----|------|------|------|
| FH28D-20S-0.5SH(98) | CL586-1823-5-98 | 20 | 10.5 | 15.3 | 11.5 | -    | 24 | 25.4 | 29.4 | 16.3 |
| FH28D-28S-0.5SH(98) | CL586-1835-4-98 | 28 | 14.5 | 19.3 | 14.2 | 28.4 | 32 | 33.4 | 37.4 | 20.3 |
| FH28D-30S-0.5SH(98) | CL586-1827-6-98 | 30 | 15.5 | 20.3 | 14.2 | 28.4 | 32 | 33.4 | 37.4 | 21.3 |
| FH28D-50S-0.5SH(98) | CL586-1808-1-98 | 50 | 25.5 | 30.3 | 20.2 | 40.4 | 44 | 45.4 | 49.4 | -    |
| FH28D-55S-0.5SH(98) | CL586-1821-0-98 | 55 | 28   | 32.8 | 20.2 | 40.4 | 44 | 45.4 | 49.4 | -    |
| FH28D-64S-0.5SH(98) | CL586-1813-1-98 | 64 | 32.5 | 37.3 | 26.2 | 52.4 | 56 | 57.4 | 61.4 | -    |
| FH28D-68S-0.5SH(98) | CL586-1819-8-98 | 68 | 34.5 | 39.3 | 26.2 | 52.4 | 56 | 57.4 | 61.4 | -    |
| FH28D-74S-0.5SH(98) | CL586-1828-9-98 | 74 | 37.5 | 42.3 | 26.2 | 52.4 | 56 | 57.4 | 61.4 | 43.3 |

\* : NUMBER OF CONTACTS

|            |             |                     |
|------------|-------------|---------------------|
| <b>HRS</b> | DRAWING NO. | EDC3-155415-08      |
|            | PART NO.    | FH28D-**S-0.5SH(98) |
|            | CODE NO.    | CL586               |
|            |             | △ 3/3               |

## X-ON Electronics

Largest Supplier of Electrical and Electronic Components

*Click to view similar products for [FFC & FPC Connectors](#) category:*

*Click to view products by [Hirose](#) manufacturer:*

Other Similar products are found below :

[K-FC20](#) [FH29B-80S-0.2SHW\(99\)](#) [FPH-2022G](#) [AYF332735](#) [52610-1075](#) [52610-1275](#) [52610-1934](#) [501864-3091-TR225](#) [086222026001800](#)  
[52610-0675](#) [62684-36210E9ALF](#) [52746-1671-TR250](#) [10051922-2810EHLF](#) [6-520415-9](#) [SFV6R-1STE9HLF](#) [XF3M-2915-1B-R100](#)  
[1658549-1](#) [46214008010800](#) [AYF534065TA](#) [AYF351525](#) [086212040340800+](#) [AYF530365TA](#) [67000-014LF](#) [67000-004LF](#)  
[006207341915000+](#) [DS1020-19RT1D](#) [67000-003LF](#) [67000-011LF](#) [67000-016LF](#) [HFW14R-2STE9LF](#) [SFV32R-2STBE9HLF](#) [SFW12R-](#)  
[5STE9LF](#) [SFW18R-1STAE9LF](#) [SFW4R-5STE9LF](#) [52807-0430](#) [046283021002868+](#) [THD1015-8CL-SN](#) [67000-006LF](#) [502250-8027](#)  
[104267-9617](#) [66987-011LF](#) [AYF362535](#) [F0501-T-50-20T-R](#) [HFW8S-2STAE1HLF](#) [67000-008LF](#) [67000-012LF](#) [ECC576069EU](#) [F1002-B-](#)  
[20-20T-R](#) [HFW15S-2STAE1HLF](#) [0781271110](#)