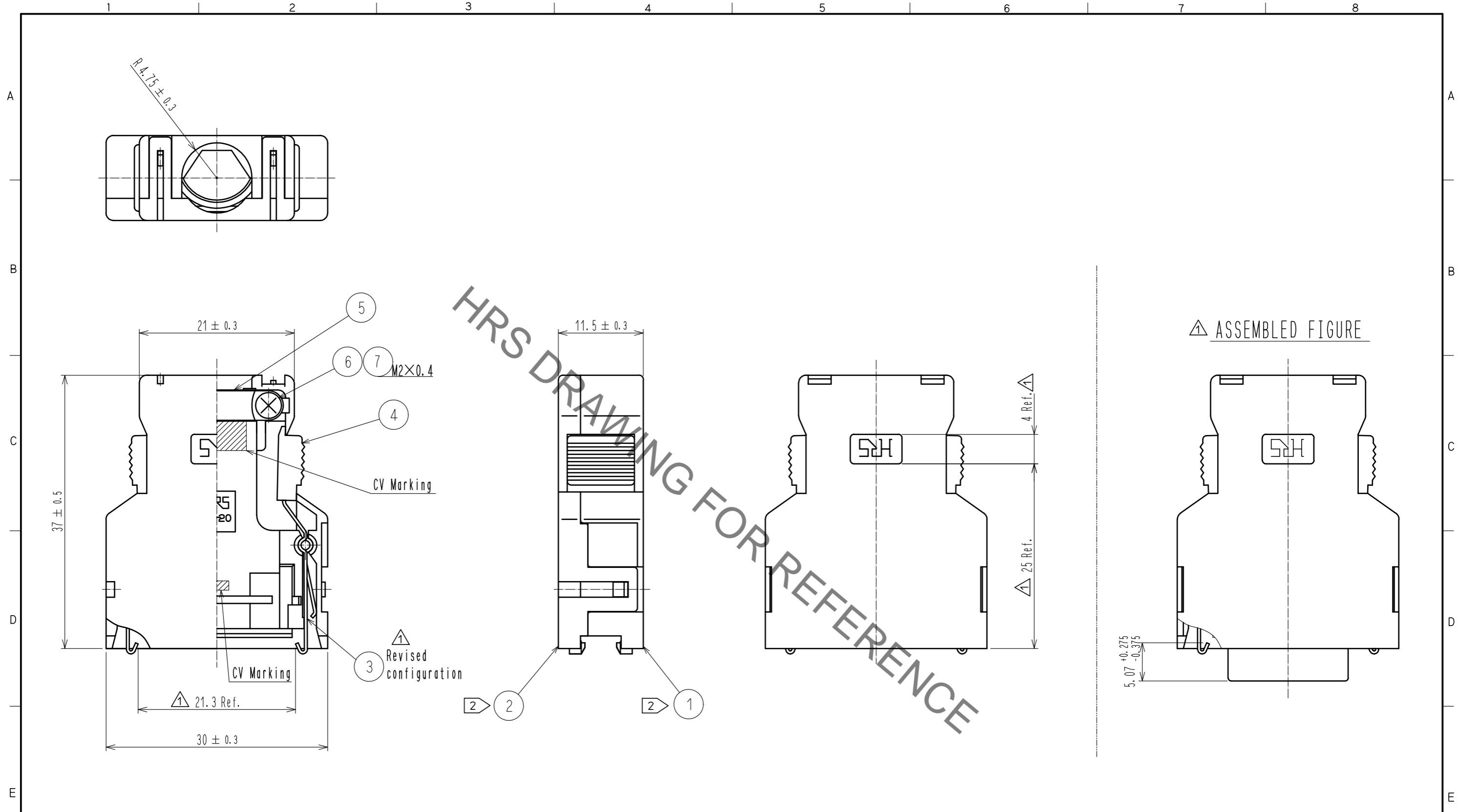


Sep.1.2021 Copyright 2021 HIROSE ELECTRIC CO., LTD. All Rights Reserved.
In case of consideration for using Automotive equipment / device which demand high reliability, kindly contact our sales window correspondents.



HRS DRAWING FOR REFERENCE

- Note**
1. Outer surface of cover case part no. ① and ② are matte finished equivalent to TH-117 (Tanazawa hakkosha Co., Ltd.). Except around the ditch of HRS mark.
 2. Part no. ③, ④, ⑤, ⑥, ⑦ are assembled into part no. ①. Part no. ① and ② are not assembled when delivered.
 3. Outer diameter of applicable cable shall be $\phi 8.5 \pm 0.5$.

NO.	MATERIAL	FINISH . REMARKS	NO.	MATERIAL	FINISH . REMARKS
4	Polycarbonate	Gray . UL94V-0			
3	Stainless steel		7	Brass	Nickel plating $0.8 \mu\text{m}$ min.
2	Polycarbonate	Gray . UL94V-0	6	Brass	Nickel plating $0.8 \mu\text{m}$ min.
1	Polycarbonate	Gray . UL94V-0	5	Stainless steel	

UNITS	SCALE	COUNT	DESCRIPTION OF REVISIONS	DESIGNED	CHECKED	DATE
mm	2 : 1	6	DIS-E-00001548	P. EKSOURIYA	AH. KODAMA	18. 07. 09
APPROVED : HO. MIWA			05. 10. 17	DRAWING NO. EDC-040857-60-01		
CHECKED : YH. ENAMI			05. 10. 14	PART NO. FI-20-CV(60)		
DESIGNED : TU. TANIGUCHI			05. 10. 14	CODE NO. CL230-0501-4-60		
DRAWN : YK. SATO			05. 09. 07	1/1		

X-ON Electronics

Largest Supplier of Electrical and Electronic Components

Click to view similar products for [I/O Connectors](#) category:

Click to view products by [Hirose](#) manufacturer:

Other Similar products are found below :

[571763P](#) [58098-0628](#) [72.250.1628.2](#) [72.250.2428.2](#) [74720-0505](#) [76.350.0729.0](#) [76871-1403](#) [FCN-244F080-G/1](#) [FCN-260A9920](#) [MP-5T180MUNNA-005](#) [PCR-E36PM](#) [PCS-XE26MA+](#) [G38A71314B](#) [1571250010](#) [157-22500-3](#) [MS3471L14-19P L/C](#) [192991-0703](#) [172501-4002](#) [172501-6002](#) [FCN-260C008-A/L0](#) [FCN-260C024-AL0](#) [FCN-261Z008](#) [2000314-1](#) [200331-1](#) [PCR-E36FC+](#) [PCS-E28FS+](#) [PCS-XE26SLFD+](#) [PCS-XE26SLFDT+](#) [G730VID08BDC24](#) [HDR-E14MSG1+](#) [U90B2054081210](#) [UE86K842720321](#) [38113800006](#)
[DP3AR020WQ1R200](#) [Z4.102.0680.0](#) [500-1040](#) [500-1052](#) [500-1054](#) [ZP-4008-66L](#) [0709821002](#) [DX40-20P\(55\)](#) [5554841-1](#) [MS3474W18-8P-LC*](#) [SM3106F14S-7S-LC](#) [U90B3054061110](#) [U65-E04-4020](#) [ZPF000000000097891](#) [557-262M2-06C](#) [747360449](#) [10099439-003C-TRLF](#)