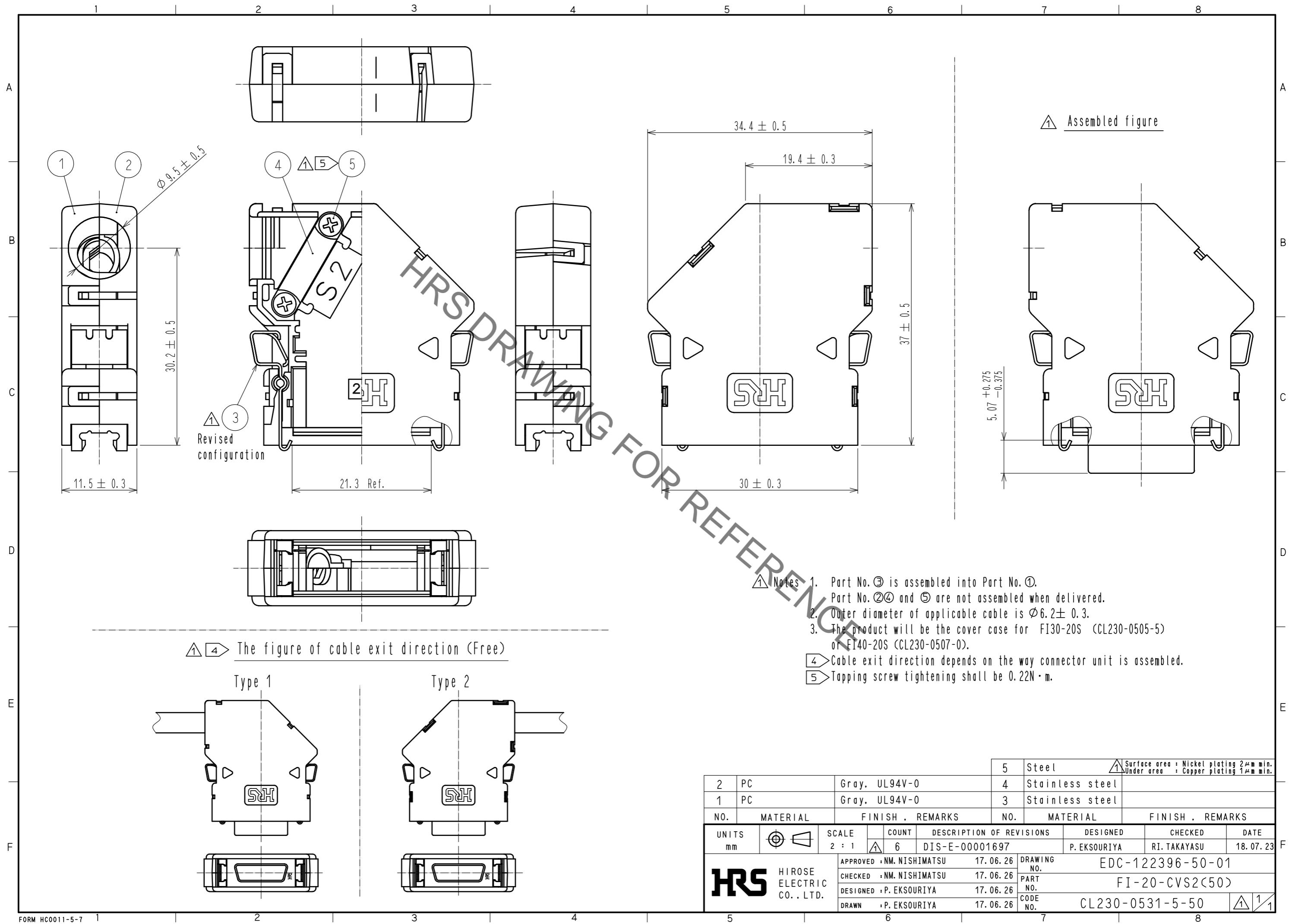
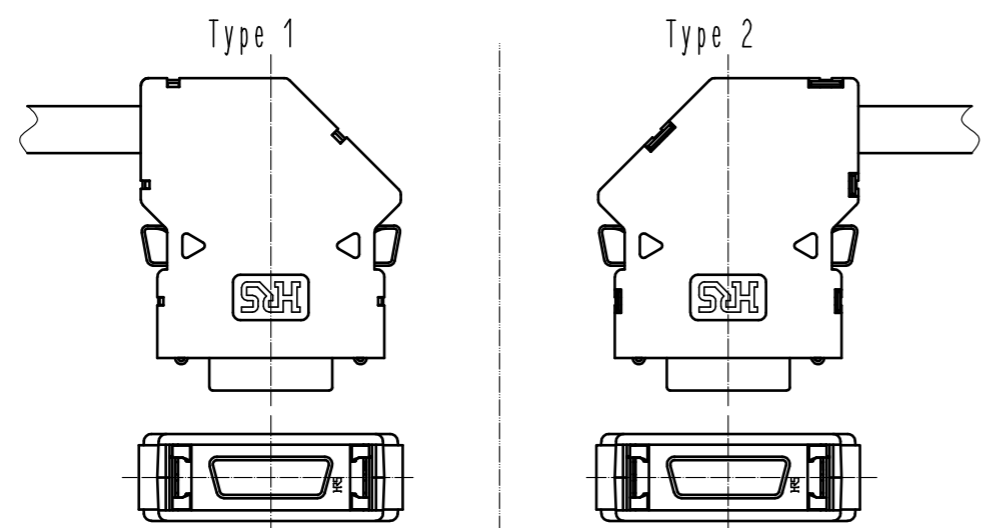


Sep.1.2021 Copyright 2021 HIROSE ELECTRIC CO., LTD. All Rights Reserved.  
 In case of consideration for using Automotive equipment / device which demand high reliability, kindly contact our sales window correspondents.



④ The figure of cable exit direction (Free)



- Notes
1. Part No. ③ is assembled into Part No. ①.  
Part No. ②④ and ⑤ are not assembled when delivered.
  2. Outer diameter of applicable cable is  $\phi 6.2 \pm 0.3$ .
  3. The product will be the cover case for FI30-20S (CL230-0505-5) or FI40-20S (CL230-0507-0).
  - ④ Cable exit direction depends on the way connector unit is assembled.
  - ⑤ Tapping screw tightening shall be  $0.22N \cdot m$ .

2	PC	Gray, UL94V-0	5	Steel	① Surface area : Nickel plating 2 $\mu$ m min. Under area : Copper plating 1 $\mu$ m min.
1	PC	Gray, UL94V-0	4	Stainless steel	
			3	Stainless steel	
NO.	MATERIAL	FINISH . REMARKS	NO.	MATERIAL	FINISH . REMARKS
UNITS		SCALE	COUNT	DESCRIPTION OF REVISIONS	
mm		2 : 1	④ 6	DESIGNED	CHECKED
				P. EKSOURIYA	RI. TAKAYASU
				DATE	18. 07. 23
			APPROVED : NM. NISHIMATSU	17. 06. 26	DRAWING NO. EDC-122396-50-01
			CHECKED : NM. NISHIMATSU	17. 06. 26	PART NO. FI-20-CVS2(50)
			DESIGNED : P. EKSOURIYA	17. 06. 26	CODE NO. CL230-0531-5-50
			DRAWN : P. EKSOURIYA	17. 06. 26	① 1/1

## X-ON Electronics

Largest Supplier of Electrical and Electronic Components

*Click to view similar products for [I/O Connectors](#) category:*

*Click to view products by [Hirose](#) manufacturer:*

Other Similar products are found below :

[571763P](#) [58098-0628](#) [72.250.1628.2](#) [72.250.2428.2](#) [74720-0505](#) [76.350.0729.0](#) [76871-1403](#) [FCN-244F080-G/1](#) [FCN-260A9920](#) [PCR-E36PM](#) [PCS-XE26MA+](#) [G38A71314B](#) [1571250010](#) [157-22500-3](#) [MS3471L14-19P L/C](#) [192991-0703](#) [172501-4002](#) [172501-6002](#) [FCN-260C008-A/L0](#) [FCN-260C024-AL0](#) [FCN-261Z008](#) [2000314-1](#) [200331-1](#) [PCR-E36FC+](#) [PCS-E28FS+](#) [PCS-XE26SLFD+](#) [PCS-XE26SLFDT+](#) [G730VID08BDC24](#) [U90B2054081210](#) [38113800006](#) [DP3AR020WQ1R200](#) [Z4.102.0680.0](#) [500-1040](#) [500-1052](#) [500-1054](#) [ZP-4008-66L](#) [0709821002](#) [DX40-20P\(55\)](#) [5554841-1](#) [MS3474W18-8P-LC\\*](#) [U90B3054061110](#) [U65-E04-4020](#) [ZPF000000000097891](#) [747360449](#) [10099439-003C-TRLF](#) [10137239-0021LF](#) [E9320-001-01](#) [10137239-0011LF](#) [70289-001LF](#) [70.060.1028.0](#)