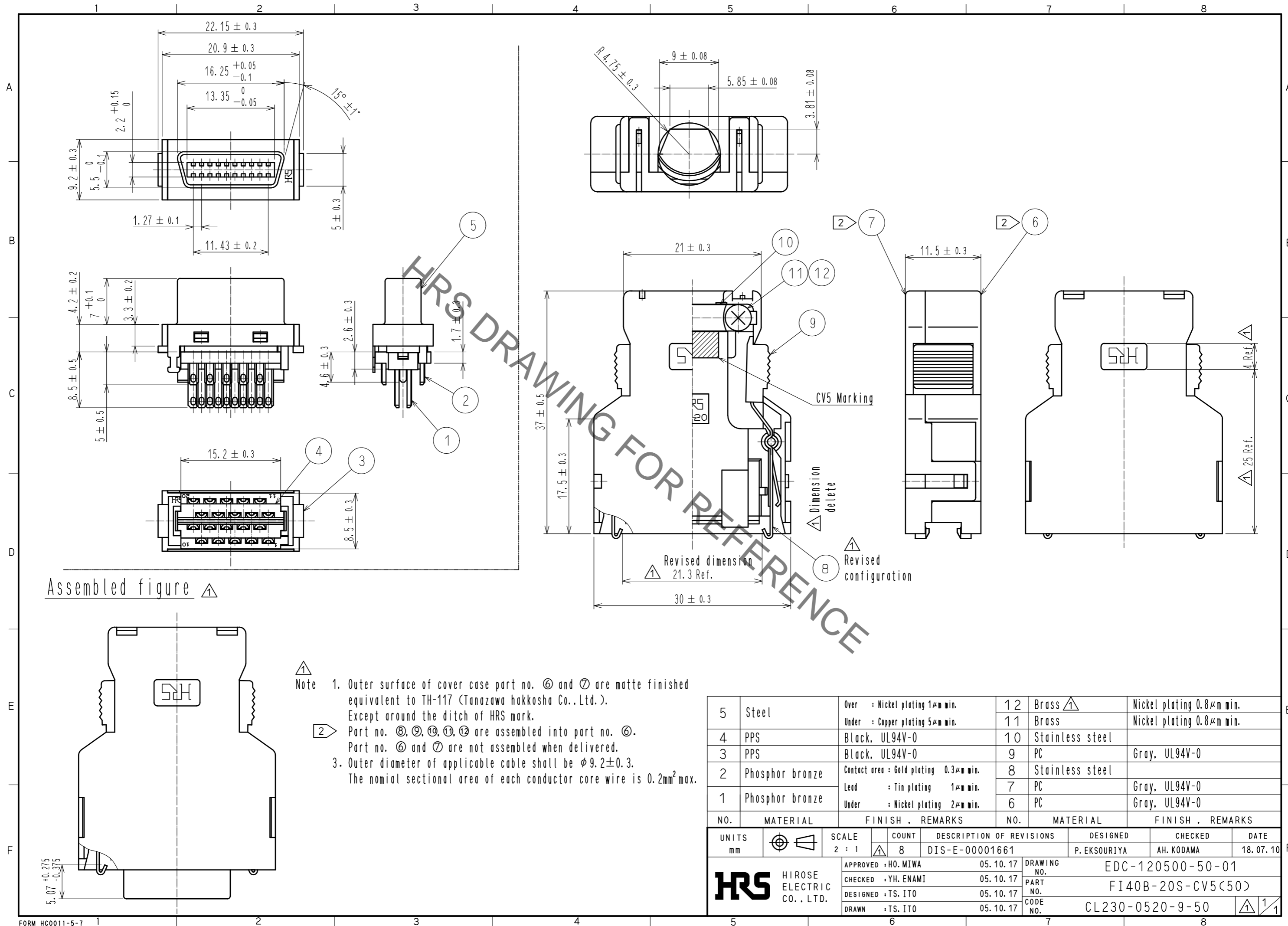


Sep.1.2021 Copyright 2021 HIROSE ELECTRIC CO., LTD. All Rights Reserved.  
In case of consideration for using Automotive equipment / device which demand high reliability, kindly contact our sales window correspondents.



Assembled figure  $\triangle$

- $\triangle$  Note 1. Outer surface of cover case part no.  $\textcircled{6}$  and  $\textcircled{7}$  are matte finished equivalent to TH-117 (Tanazawa hakkosha Co., Ltd.). Except around the ditch of HRS mark.
- $\textcircled{2}$  Part no.  $\textcircled{8}$ ,  $\textcircled{9}$ ,  $\textcircled{10}$ ,  $\textcircled{11}$ ,  $\textcircled{12}$  are assembled into part no.  $\textcircled{6}$ . Part no.  $\textcircled{6}$  and  $\textcircled{7}$  are not assembled when delivered.
3. Outer diameter of applicable cable shall be  $\phi 9.2 \pm 0.3$ . The nominal sectional area of each conductor core wire is  $0.2 \text{ mm}^2$  max.

5	Steel	Over : Nickel plating $1 \mu\text{m}$ min. Under : Copper plating $5 \mu\text{m}$ min.	12	Brass $\triangle$	Nickel plating $0.8 \mu\text{m}$ min.
4	PPS	Black, UL94V-0	11	Brass	Nickel plating $0.8 \mu\text{m}$ min.
3	PPS	Black, UL94V-0	10	Stainless steel	
2	Phosphor bronze	Contact area : Gold plating $0.3 \mu\text{m}$ min. Lead : Tin plating $1 \mu\text{m}$ min.	9	PC	Gray, UL94V-0
1	Phosphor bronze	Under : Nickel plating $2 \mu\text{m}$ min.	8	Stainless steel	
			7	PC	Gray, UL94V-0
			6	PC	Gray, UL94V-0
NO.	MATERIAL	FINISH . REMARKS	NO.	MATERIAL	FINISH . REMARKS

UNITS mm	$\odot$ $\triangle$	SCALE 2 : 1	COUNT $\triangle$ 8	DESCRIPTION OF REVISIONS DIS-E-00001661	DESIGNED P. EKSOURIYA	CHECKED AH. KODAMA	DATE 18.07.10
<b>HRS</b> HIROSE ELECTRIC CO., LTD.		APPROVED : HO. MIWA	05.10.17	DRAWING NO. EDC-120500-50-01			
		CHECKED : YH. ENAMI	05.10.17	PART NO. FI40B-20S-CV5(50)			
		DESIGNED : TS. ITO	05.10.17	CODE NO. CL230-0520-9-50			
		DRAWN : TS. ITO	05.10.17	$\triangle$ 1/1			

## X-ON Electronics

Largest Supplier of Electrical and Electronic Components

*Click to view similar products for [I/O Connectors](#) category:*

*Click to view products by [Hirose](#) manufacturer:*

Other Similar products are found below :

[571763P](#) [58098-0628](#) [72.250.1628.2](#) [72.250.2428.2](#) [74720-0505](#) [76.350.0729.0](#) [76871-1403](#) [FCN-244F080-G/1](#) [FCN-260A9920](#) [PCR-E36PM](#) [PCS-XE26MA+](#) [G38A71314B](#) [1571250010](#) [157-22500-3](#) [MS3471L14-19P L/C](#) [192991-0703](#) [172501-4002](#) [172501-6002](#) [FCN-260C008-A/L0](#) [FCN-260C024-AL0](#) [FCN-261Z008](#) [2000314-1](#) [200331-1](#) [PCR-E36FC+](#) [PCS-E28FS+](#) [PCS-XE26SLFD+](#) [PCS-XE26SLFDT+](#) [G730VID08BDC24](#) [U90B2054081210](#) [UE86K842720321](#) [38113800006](#) [DP3AR020WQ1R200](#) [Z4.102.0680.0](#) [500-1040](#) [500-1052](#) [500-1054](#) [ZP-4008-66L](#) [0709821002](#) [DX40-20P\(55\)](#) [5554841-1](#) [MS3474W18-8P-LC\\*](#) [SM3106F14S-7S-LC](#) [U90B3054061110](#) [U65-E04-4020](#) [ZPF000000000097891](#) [557-262M2-06C](#) [747360449](#) [10099439-003C-TRLF](#) [10137239-0021LF](#) [E9320-001-01](#)