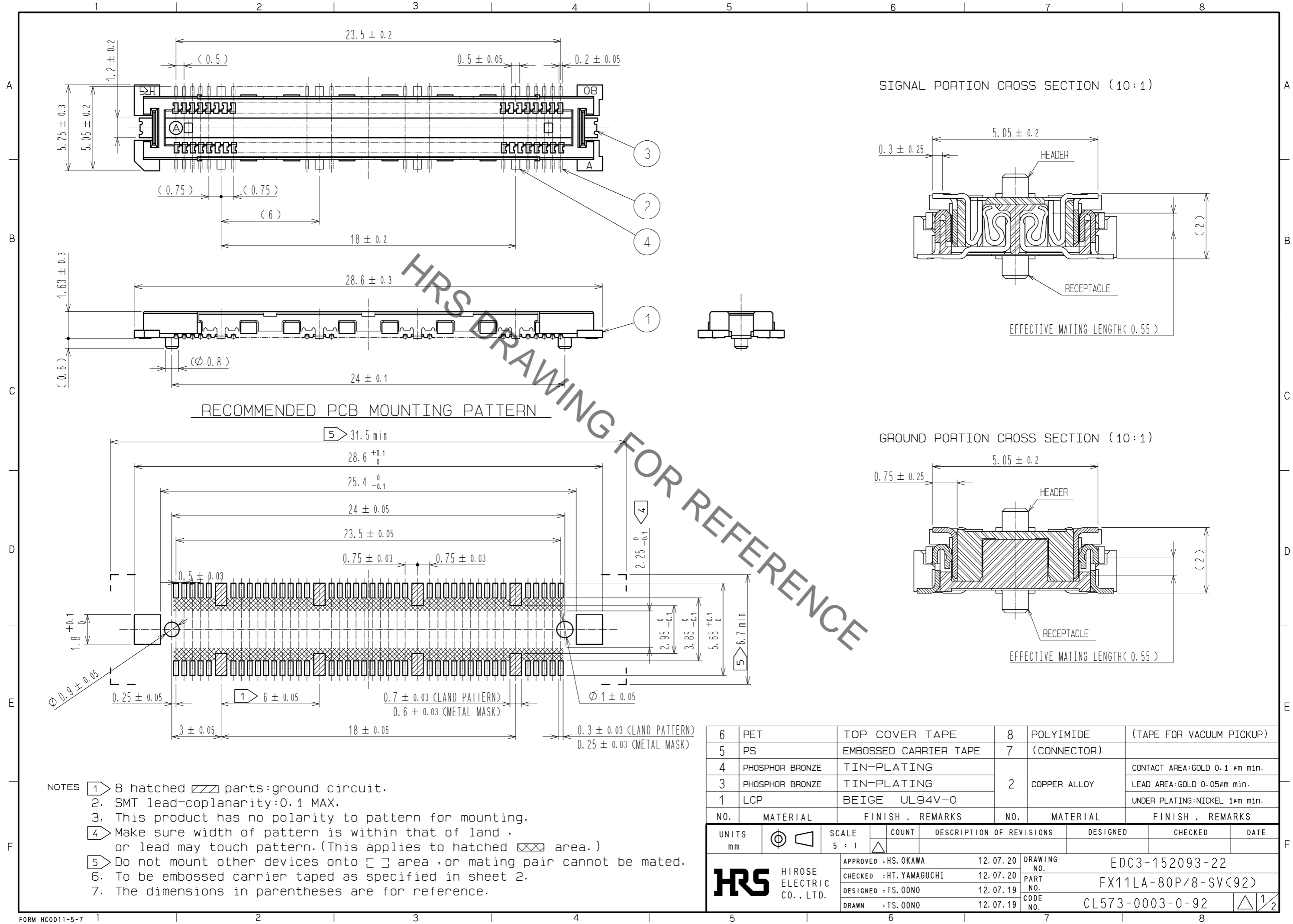


Sep.1.2021 Copyright 2021 HIROSE ELECTRIC CO., LTD. All Rights Reserved.  
In case of consideration for using Automotive equipment / device which demand high reliability, kindly contact our sales window correspondents.

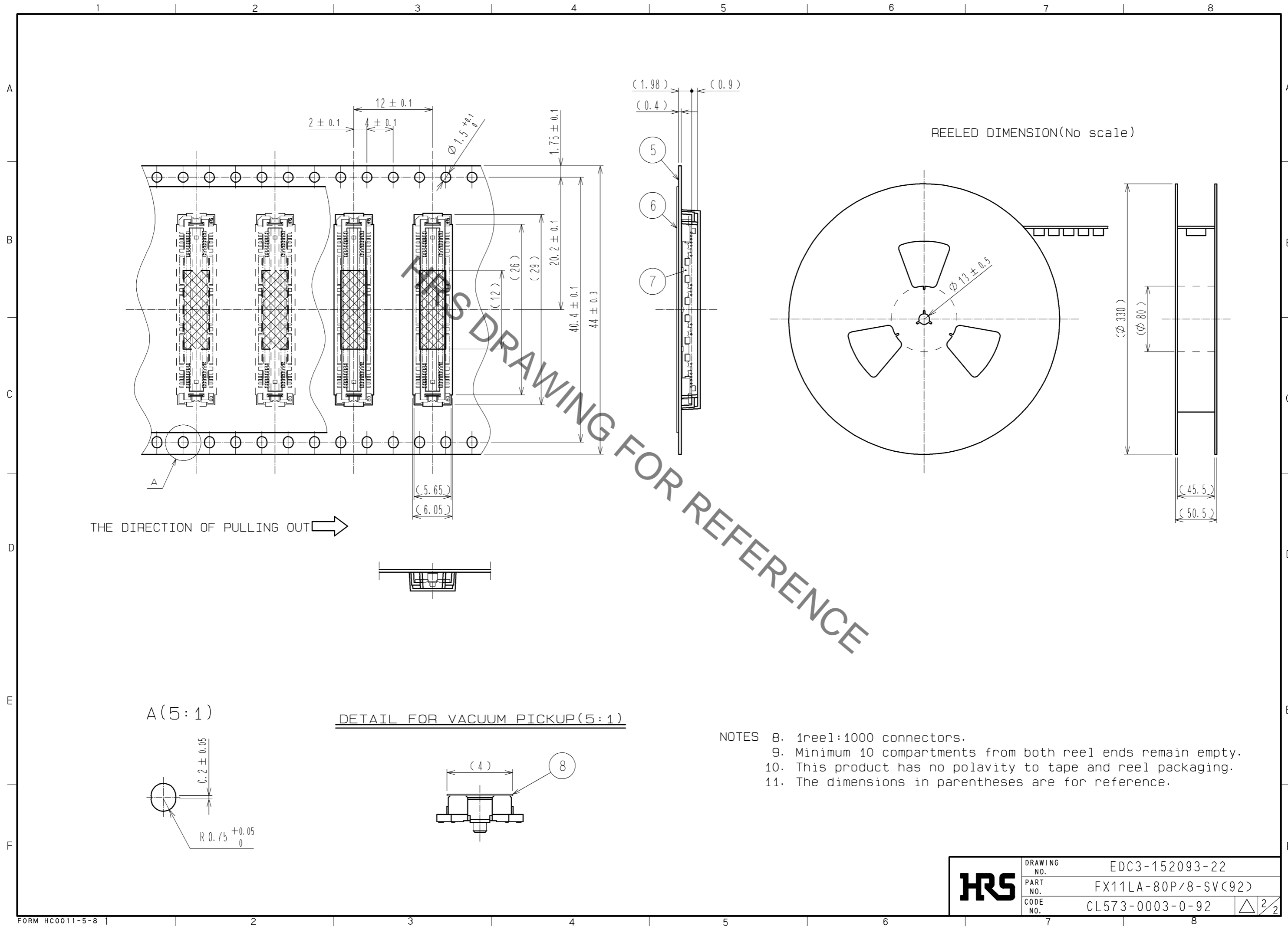


HRS DRAWING FOR REFERENCE

- NOTES
- 1 8 hatched parts:ground circuit.
  2. SMT lead-coplanarity:0.1 MAX.
  3. This product has no polarity to pattern for mounting.
  - 4 Make sure width of pattern is within that of land , or lead may touch pattern.(This applies to hatched area.)
  - 5 Do not mount other devices onto area ,or mating pair cannot be mated.
  6. To be embossed carrier taped as specified in sheet 2.
  7. The dimensions in parentheses are for reference.

| 6                                    | PET             | TOP COVER TAPE          | 8              | POLYIMIDE    | (TAPE FOR VACUUM PICKUP)      |
|--------------------------------------|-----------------|-------------------------|----------------|--------------|-------------------------------|
| 5                                    | PS              | EMBOSSD CARRIER TAPE    | 7              | (CONNECTOR)  |                               |
| 4                                    | PHOSPHOR BRONZE | TIN-PLATING             | 2              | COPPER ALLOY | CONTACT AREA:GOLD 0.1 μm min. |
| 3                                    | PHOSPHOR BRONZE | TIN-PLATING             |                |              | LEAD AREA:GOLD 0.05μm min.    |
| 1                                    | LCP             | BEIGE UL94V-0           |                |              | UNDER PLATING:NICKEL 1μm min. |
| NO.                                  | MATERIAL        | FINISH . REMARKS        | NO.            | MATERIAL     | FINISH . REMARKS              |
| UNITS<br>mm                          |                 |                         | SCALE<br>5 : 1 |              | COUNT                         |
| <b>HRS</b> HIROSE ELECTRIC CO., LTD. |                 | APPROVED : HS. OKAWA    | 12.07.20       | DESIGNED     | DATE                          |
|                                      |                 | CHECKED : HT. YAMAGUCHI | 12.07.20       | CHECKED      | DATE                          |
|                                      |                 | DESIGNED : TS. OONO     | 12.07.19       | DRAWING NO.  | EDC3-152093-22                |
|                                      |                 | DRAWN : TS. OONO        | 12.07.19       | PART NO.     | FX11LA-80P/8-SV(92)           |
|                                      |                 |                         |                | CODE NO.     | CL573-0003-0-92               |
|                                      |                 |                         |                |              | 1/2                           |

Sep.1.2021 Copyright 2021 HIROSE ELECTRIC CO., LTD. All Rights Reserved.  
 In case of consideration for using Automotive equipment / device which demand high reliability, kindly contact our sales window correspondents.



REELED DIMENSION(No scale)

THE DIRECTION OF PULLING OUT →

A(5:1)

DETAIL FOR VACUUM PICKUP(5:1)

- NOTES
- 8. 1reel:1000 connectors.
  - 9. Minimum 10 compartments from both reel ends remain empty.
  - 10. This product has no polavity to tape and reel packaging.
  - 11. The dimensions in parentheses are for reference.

|            |             |                     |
|------------|-------------|---------------------|
| <b>HRS</b> | DRAWING NO. | EDC3-152093-22      |
|            | PART NO.    | FX11LA-80P/8-SV(92) |
|            | CODE NO.    | CL573-0003-0-92     |
|            |             | △ 2/2               |

## X-ON Electronics

Largest Supplier of Electrical and Electronic Components

*Click to view similar products for [Board to Board & Mezzanine Connectors](#) category:*

*Click to view products by [Hirose](#) manufacturer:*

Other Similar products are found below :

[589158040000018](#) [MDF7C-18P-2.54DSA\(55\)](#) [FCN-230C068-11](#) [FCN-268F012-G/BD](#) [FCN-268F036-G/BD](#) [FCN-268M012-G/0D](#) [FCN-268M024-G/1D](#) [FCN-723J004/1](#) [MIS-048-01-F-D-DP-K](#) [832-10-034-10-001000](#) [FX4C-80S-1.27DSA](#) [FCN-214Q030-G/0](#) [FCN-234P048-G/0](#) [FCN-235D050-G/C](#) [210-93-314-41-105000](#) [2-22603-0](#) [MDF7-40DP-2.54DSA\(55\)](#) [AXG720047](#) [MIT-114-03-F-D-K](#) [55323-1519](#) [DF33-2P-3.3DSA\(24\)](#) [YFT-20-05-H-03-SB-K](#) [503308-3040](#) [026-6203-PDB](#) [027-6203-PDB](#) [069159702701000](#) [10123981-102LF](#) [101A10019X](#) [55650-0588-C](#) [68682-310LF](#) [68684-306](#) [75140-7012](#) [87471-650](#) [YTW-30-07-H-Q-410-140](#) [FCN-268F024-G0D](#) [10124054-515LF](#) [68685-603](#) [8-1616154-3](#) [MIS-019-01-F-D](#) [FCN-268M024-G/3D](#) [FCN-268M036-G/BD](#) [20021832-06016C1LF](#) [KX15-20KLDL-E1000E](#) [AXE810124](#) [FCN-214J100-G/0](#) [FCN-230C068-E/S](#) [AXE812124](#) [AXE816124](#) [AXE720127](#) [354184](#)