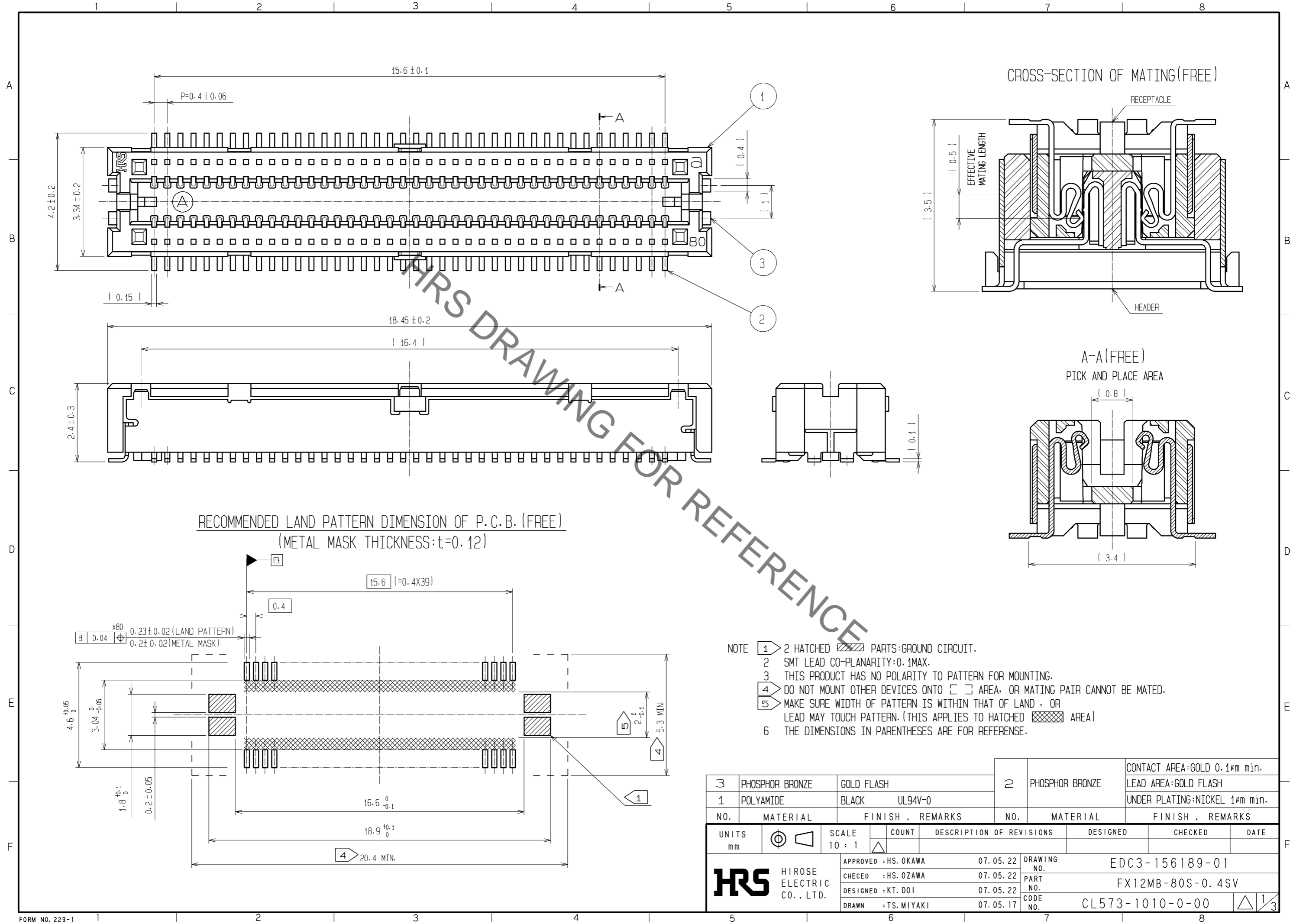
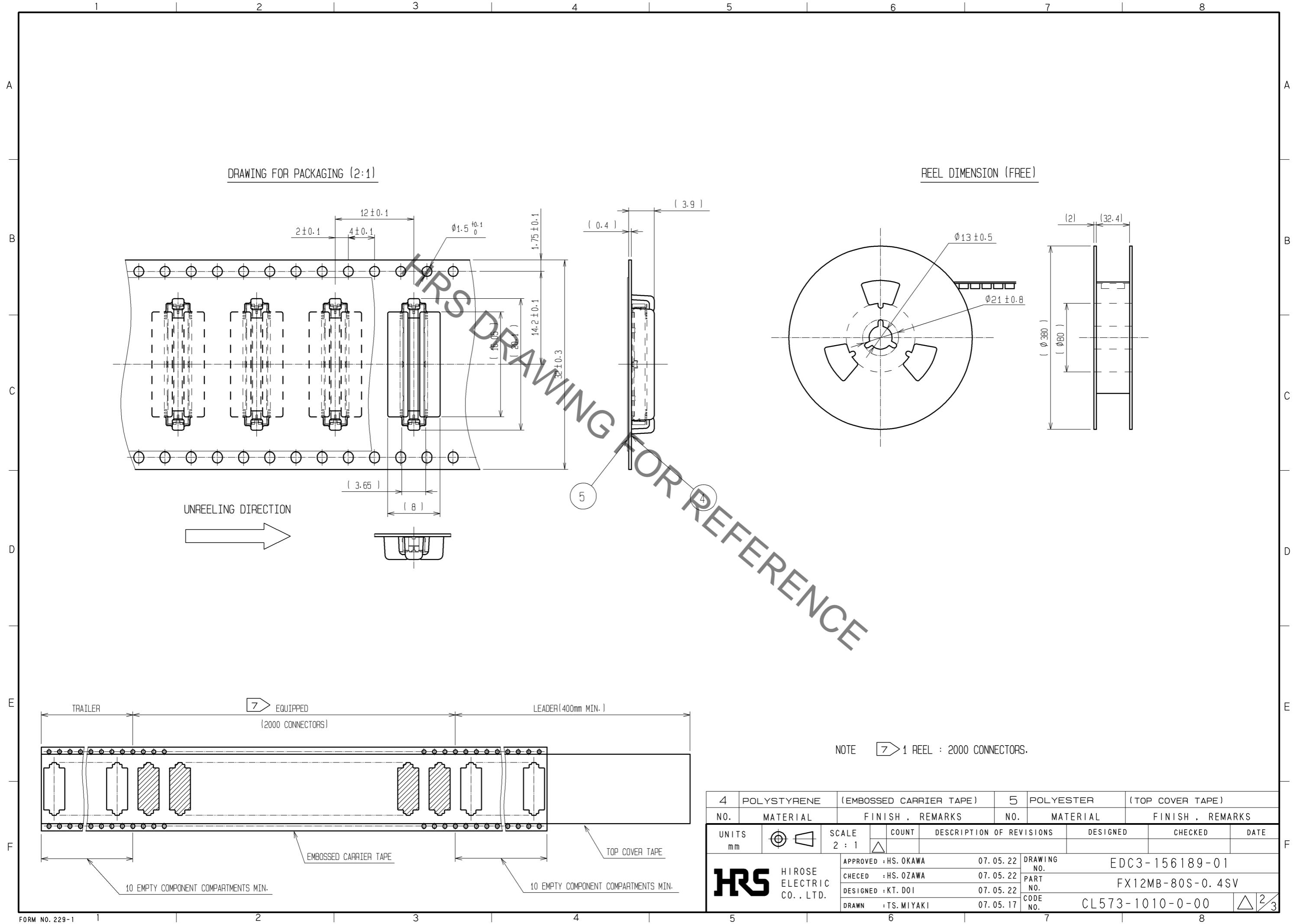


May.1.2019 Copyright 2019 HIROSE ELECTRIC CO., LTD. All Rights Reserved.  
 In case of consideration for using Automotive equipment / device which demand high reliability, kindly contact our sales window correspondents.



3	PHOSPHOR BRONZE	GOLD FLASH	2	PHOSPHOR BRONZE	CONTACT AREA: GOLD 0.1 $\mu\text{m}$ min. LEAD AREA: GOLD FLASH		
1	POLYAMIDE	BLACK UL94V-0			UNDER PLATING: NICKEL 1 $\mu\text{m}$ min.		
NO.	MATERIAL	FINISH . REMARKS	NO.	MATERIAL	FINISH . REMARKS		
UNITS	$\odot$	SCALE	COUNT	DESCRIPTION OF REVISIONS	DESIGNED	CHECKED	DATE
mm		10 : 1	$\triangle$				
<b>HRS</b> HIROSE ELECTRIC CO., LTD.		APPROVED : HS. OKAWA	07.05.22	DRAWING NO.	EDC3-156189-01		
		CHECKED : HS. OZAWA	07.05.22	PART NO.	FX12MB-80S-0.4SV		
		DESIGNED : KT. DOI	07.05.22	CODE NO.	CL573-1010-0-00		
		DRAWN : TS. MIYAKI	07.05.17				

May.1.2019 Copyright 2019 HIROSE ELECTRIC CO., LTD. All Rights Reserved.  
 In case of consideration for using Automotive equipment / device which demand high reliability, kindly contact our sales window correspondents.

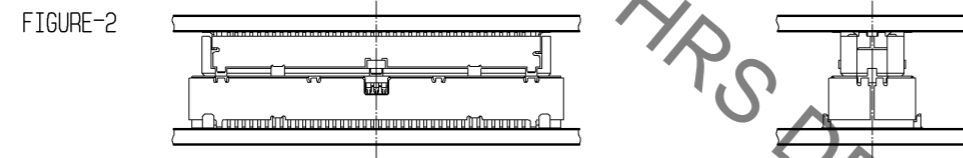
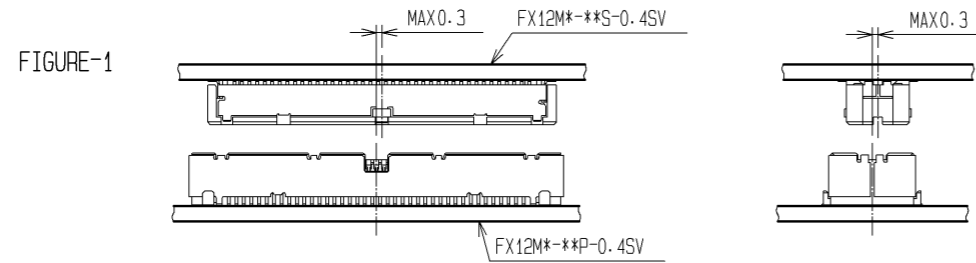


FORM NO. 229-1

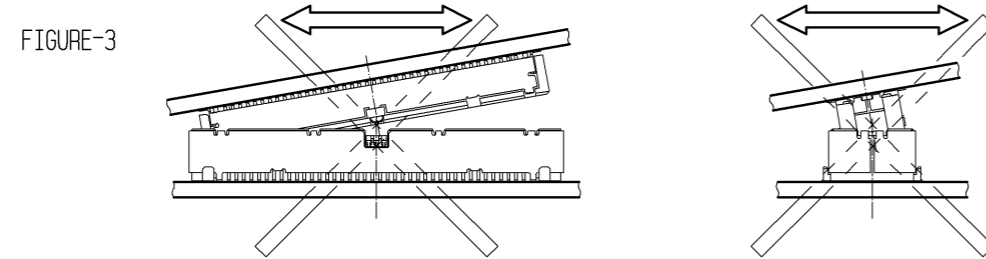
4	POLYSTYRENE	(EMBOSSED CARRIER TAPE)	5	POLYESTER	(TOP COVER TAPE)		
NO.	MATERIAL	FINISH . REMARKS	NO.	MATERIAL	FINISH . REMARKS		
UNITS	mm	SCALE	COUNT	DESCRIPTION OF REVISIONS	DESIGNED	CHECKED	DATE
		2 : 1	△				
<b>HRS</b>		HIROSE ELECTRIC CO., LTD.	APPROVED : HS. OKAWA	07.05.22	DRAWING NO. EDC3-156189-01		
			CHECED : HS. OZAWA	07.05.22	PART NO. FX12MB-80S-0.4SV		
			DESIGNED : KT. DOI	07.05.22	CODE NO. CL573-1010-0-00		
			DRAWN : TS. MIYAKI	07.05.17	△ 2/3		

# CAUTIONS FOR USE

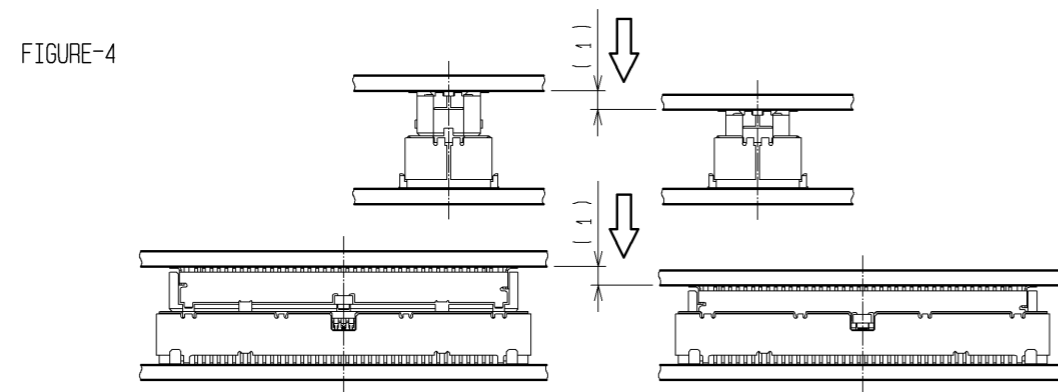
## NOTES WHEN MATING FX12 SERIES CONNECTORS.



THE SELF ALIGNMENT RANGE OF THIS CONNECTOR IS 0.3 mm.  
 PLACE THE CONNECTORS AT THE INITIAL MATING POSITION WHERE ITS MISALIGNMENT IS WITHIN 0.3 mm.  
 THEN INSERT THE CONNECTOR ON THE CHAMFERED PARTS OF THE MATING-HALF'S OPENING. MAKE SURE TO  
 KEEP THE CONNECTORS PARALLEL TO EACH OTHER.  
 NOTE THAT ANGLED INSERTION OR THE PRESSURE APPLIED TO THE CONNECTORS BEFORE ALIGNMENT MAY  
 RESULT IN DAMAGE TO MOLDED HOUSING OR CONTACT DEFORMATION.

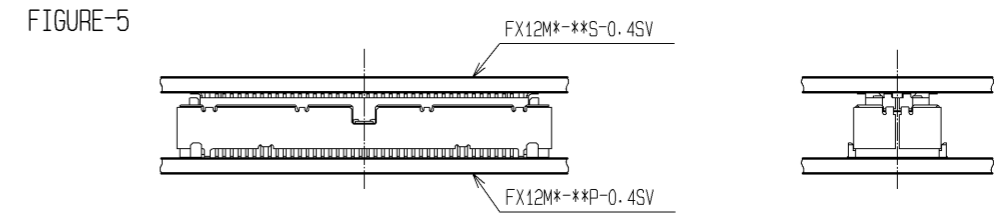


PRESS-DOWN EVENLY UNTIL SLIGHT RESISTANCE IS FELT.  
 OVERCOMING THIS SLIGHT RESISTANCE WILL COMPLETE THE MATING OF RECEPTACLE WITH HEADER.  
 A DEFINITE 'CLICK' SENSATION WILL CONFIRM THE FULLY MATED CONDITION.

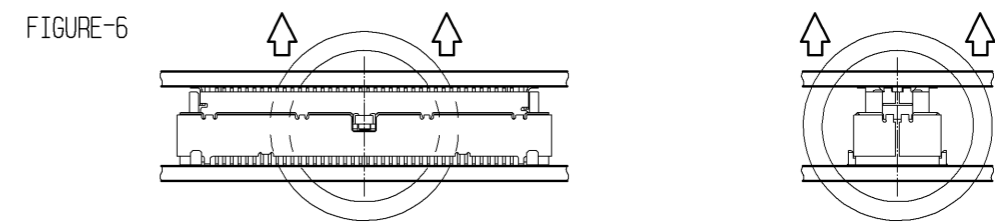


THE MATED CONDITIONS CAN BE RELEASED BY A DROP IMPACT.  
 FIX THE CONNECTORS BY APPLYING PRESSURE IN THE MATING DIRECTION WITH THE DEVICE OR A BUFFER MATERIAL.

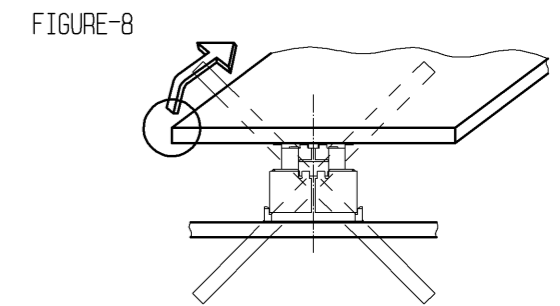
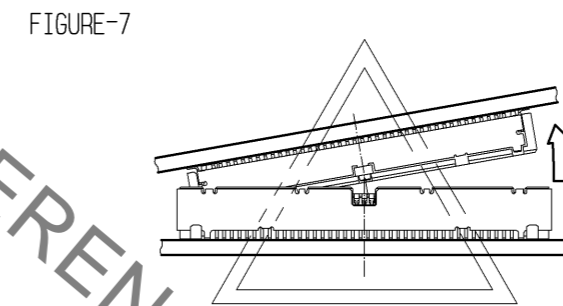
## NOTES WHEN EXTRACTING



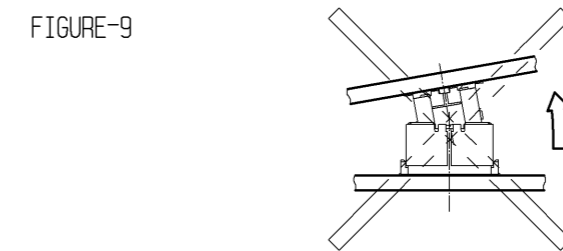
LEFT EVEN ONE SIDE, KEEPING BOTH BOARDS PARALLEL TO EACH OTHER.



WHEN HANDLING CIRCUMSTANCES PREVENT THE CONNECTOR FROM BEING KEPT  
 LEVEL DURING UN-MATING, ONE END MAY BE LIFTED SEPARATE AS SHOWN ON FIGURE-7.  
 DO NOT ATTEMPT THE START OF THE UN-MATING OF THE CONNECTORS FROM ONE SIDE (FIGURE-8)



WHEN REMOVAL IS FROM THE WIDTH ORIENTATION AS ILLUSTRATED IN THE DIAGRAM TO THE LEFT,  
 DAMAGE COULD BE CAUSED TO THE CONNECTOR. DO NOT PERFORM REMOVAL FROM THE WIDTH ORIENTATION.



UNITS	SCALE	COUNT	DESCRIPTION OF REVISIONS	DESIGNED	CHECKED	DATE
mm	FREE	△				
APPROVED : HS. OKAWA			07.05.22	DRAWING NO. EDC3-156189-01		
CHECKED : HS. OZAWA			07.05.22	PART NO. FX12MB-80S-0.4SV		
DESIGNED : KT. DOI			07.05.22	CODE NO. CL573-1010-0-00		
DRAWN : TS. MIYAKI			07.05.17	△ 3/3		

May.1.2019 Copyright 2019 HIROSE ELECTRIC CO., LTD. All Rights Reserved.  
 In case of consideration for using Automotive equipment / device which demand high reliability, kindly contact our sales window correspondents.

HRS DRAWING FOR REFERENCE

## X-ON Electronics

Largest Supplier of Electrical and Electronic Components

*Click to view similar products for [Board to Board & Mezzanine Connectors](#) category:*

*Click to view products by [Hirose](#) manufacturer:*

Other Similar products are found below :

[589158040000018](#) [MDF7C-18P-2.54DSA\(55\)](#) [FCN-230C068-11](#) [FCN-268F012-G/BD](#) [FCN-268F036-G/BD](#) [FCN-268M012-G/0D](#) [FCN-268M024-G/1D](#) [FCN-723J004/1](#) [MIS-048-01-F-D-DP-K](#) [832-10-034-10-001000](#) [FX4C-80S-1.27DSA](#) [FCN-214Q030-G/0](#) [FCN-234P048-G/0](#) [FCN-235D050-G/C](#) [210-93-314-41-105000](#) [2-22603-0](#) [MDF7-40DP-2.54DSA\(55\)](#) [AXG720047](#) [MIT-114-03-F-D-K](#) [55323-1519](#) [DF33-2P-3.3DSA\(24\)](#) [YFT-20-05-H-03-SB-K](#) [503308-3040](#) [026-6203-PDB](#) [027-6203-PDB](#) [069159702701000](#) [10123981-102LF](#) [101A10019X](#) [55650-0588-C](#) [68682-310LF](#) [68684-306](#) [75140-7012](#) [87471-650](#) [YTW-30-07-H-Q-410-140](#) [FCN-268F024-G0D](#) [10124054-515LF](#) [68685-603](#) [8-1616154-3](#) [MIS-019-01-F-D](#) [FCN-268M024-G/3D](#) [FCN-268M036-G/BD](#) [20021832-06016C1LF](#) [KX15-20KLDL-E1000E](#) [AXE810124](#) [FCN-214J100-G/0](#) [FCN-230C068-E/S](#) [AXE812124](#) [AXE816124](#) [AXE720127](#) [354184](#)