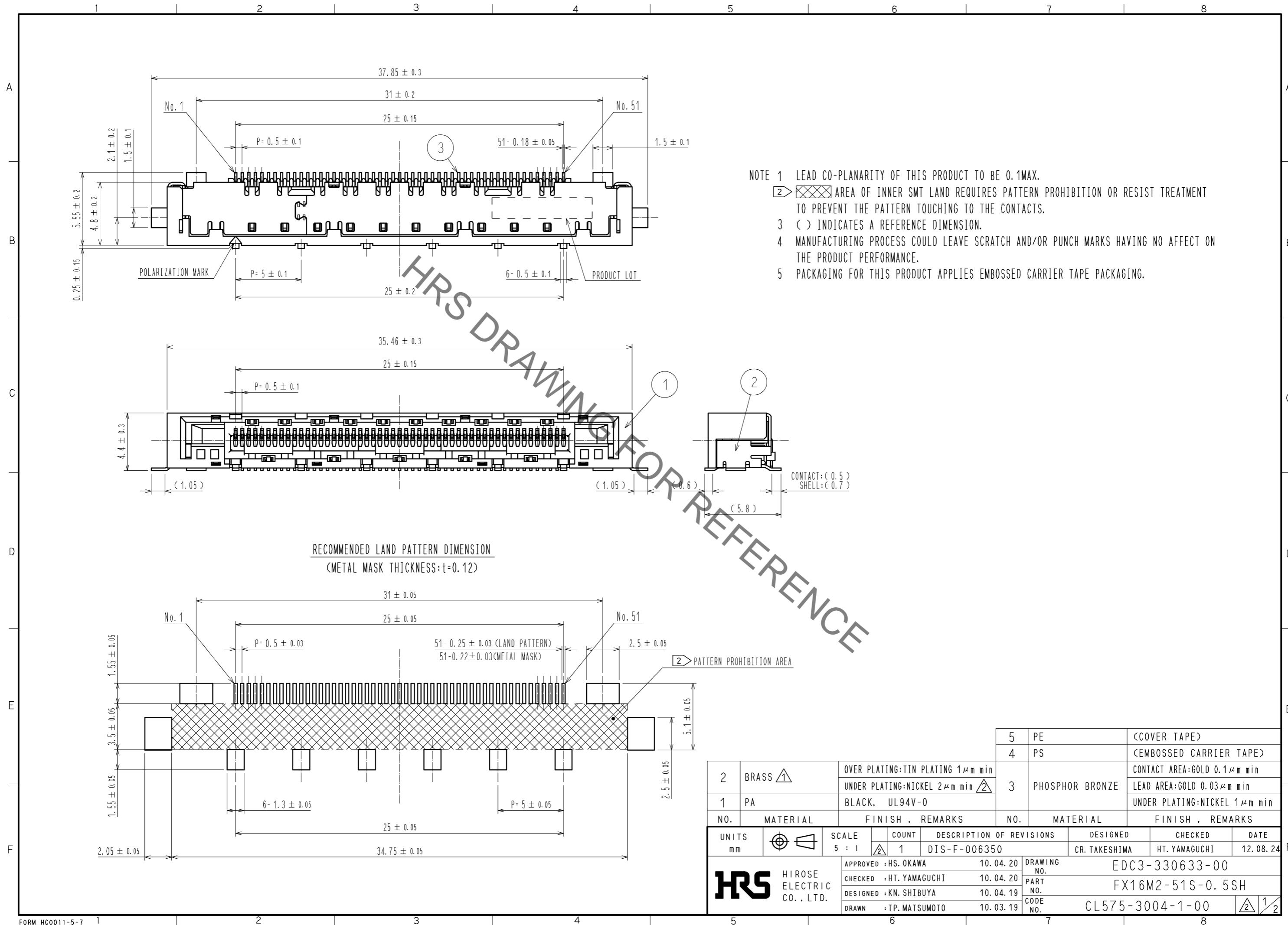


Sep.1.2021 Copyright 2021 HIROSE ELECTRIC CO., LTD. All Rights Reserved.
 In case of consideration for using Automotive equipment / device which demand high reliability, kindly contact our sales window correspondents.



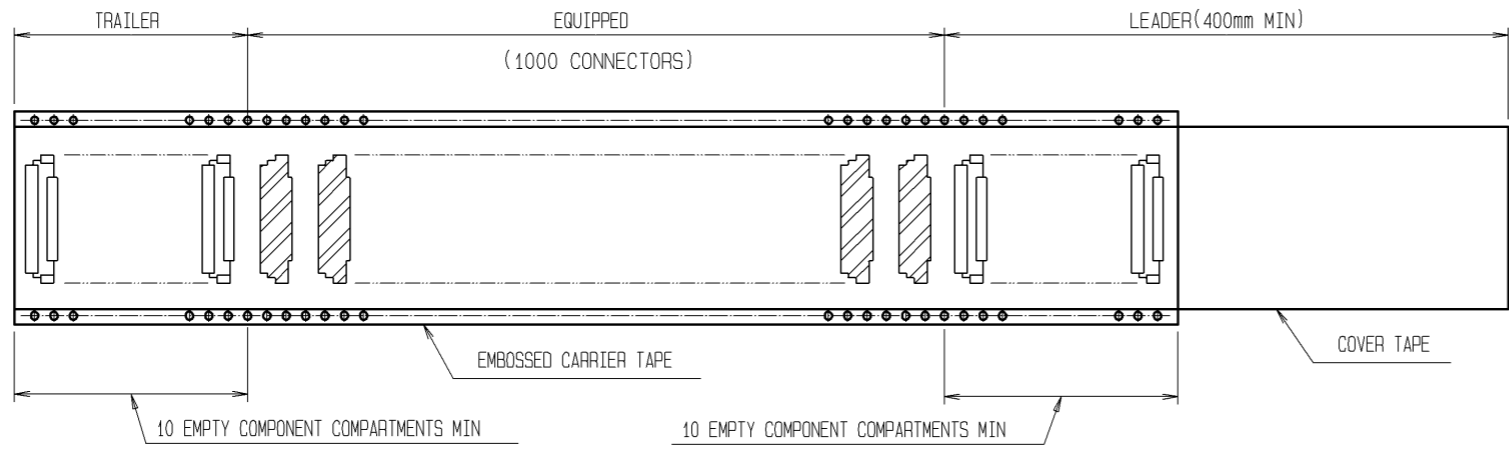
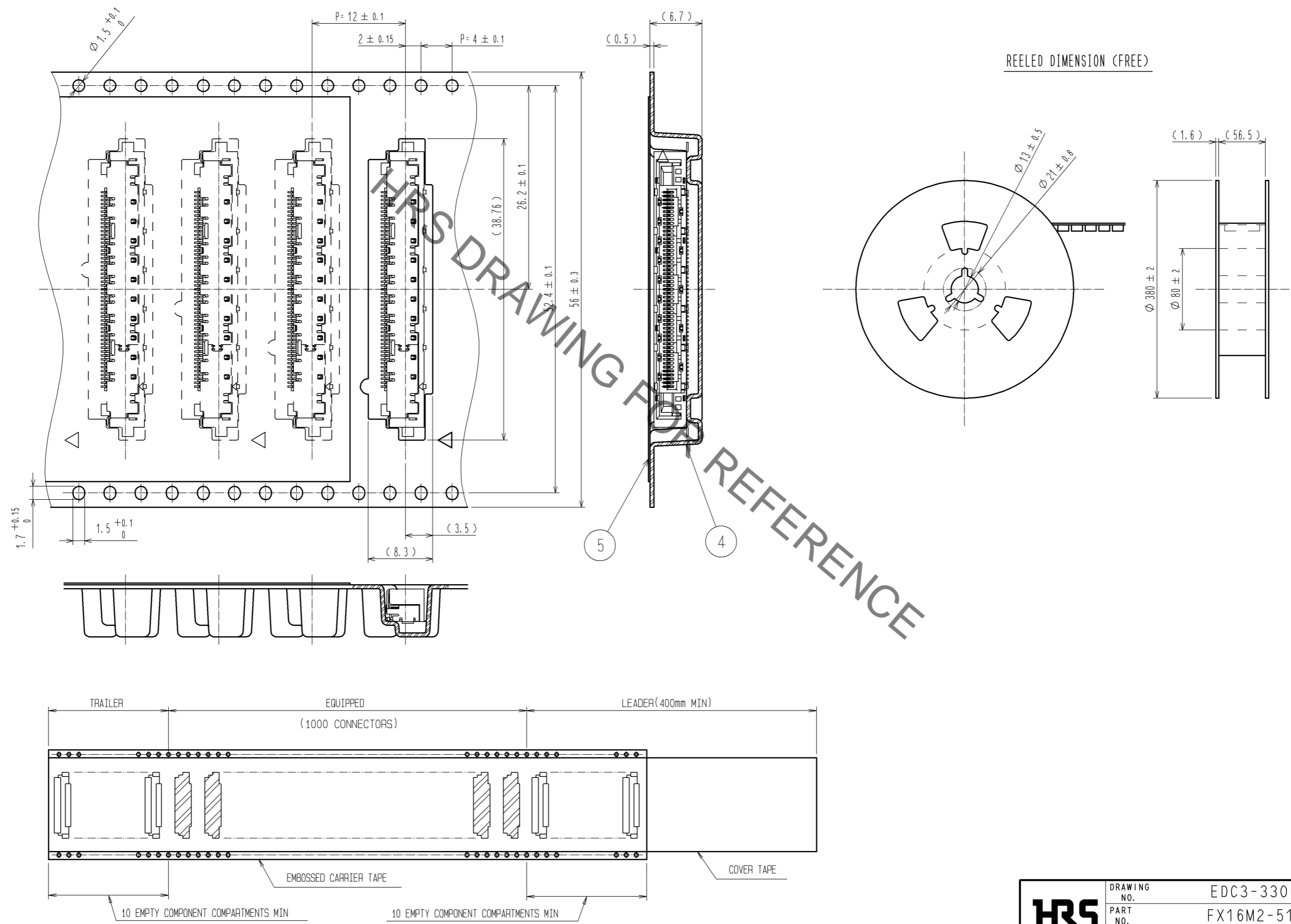
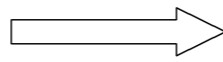
5	PE	(COVER TAPE)
4	PS	(EMBOSSED CARRIER TAPE)
3	PHOSPHOR BRONZE	CONTACT AREA: GOLD 0.1μm min
		LEAD AREA: GOLD 0.03μm min
2	BRASS	OVER PLATING: TIN PLATING 1μm min
1	PA	UNDER PLATING: NICKEL 2μm min
		BLACK. UL94V-0
NO.	MATERIAL	FINISH . REMARKS
NO.	MATERIAL	FINISH . REMARKS

UNITS		SCALE	COUNT	DESCRIPTION OF REVISIONS	DESIGNED	CHECKED	DATE
mm		5 : 1	1	DIS-F-006350	CR. TAKESHIMA	HT. YAMAGUCHI	12.08.24
APPROVED : HS. OKAWA		10.04.20		DRAWING NO.		EDC3-330633-00	
CHECKED : HT. YAMAGUCHI		10.04.20		PART NO.		FX16M2-51S-0.5SH	
DESIGNED : KN. SHIBUYA		10.04.19		CODE NO.		CL575-3004-1-00	
DRAWN : TP. MATSUMOTO		10.03.19				1/2	

Sep.1.2021 Copyright 2021 HIROSE ELECTRIC CO., LTD. All Rights Reserved.
 In case of consideration for using Automotive equipment / device which demand high reliability, kindly contact our sales window correspondents.

DRAWING FOR PACKING (2:1)

THE DIRECTION OF PULLING OUT



HRS	DRAWING NO.	EDC3-330633-00
	PART NO.	FX16M2-51S-0.5SH
	CODE NO.	CL575-3004-1-00
		2/2

X-ON Electronics

Largest Supplier of Electrical and Electronic Components

Click to view similar products for [FFC & FPC Connectors](#) category:

Click to view products by [Hirose](#) manufacturer:

Other Similar products are found below :

[K-FC20](#) [FH29B-80S-0.2SHW\(99\)](#) [FPH-2022G](#) [AYF332735](#) [52610-1075](#) [52610-1275](#) [52610-1934](#) [501864-3091-TR225](#) [086222026001800](#)
[52610-0675](#) [62684-36210E9ALF](#) [52746-1671-TR250](#) [10051922-2810EHLF](#) [6-520415-9](#) [SFV6R-1STE9HLF](#) [XF3M-2915-1B-R100](#)
[1658549-1](#) [46214008010800](#) [AYF534065TA](#) [AYF351525](#) [086212040340800+](#) [AYF530365TA](#) [67000-014LF](#) [67000-004LF](#)
[006207341915000+](#) [DS1020-19RT1D](#) [67000-003LF](#) [67000-011LF](#) [67000-016LF](#) [HFW14R-2STE9LF](#) [SFV32R-2STBE9HLF](#) [SFW12R-](#)
[5STE9LF](#) [SFW18R-1STAE9LF](#) [SFW4R-5STE9LF](#) [52807-0430](#) [046283021002868+](#) [THD1015-8CL-SN](#) [67000-006LF](#) [502250-8027](#)
[104267-9617](#) [66987-011LF](#) [AYF362535](#) [F0501-T-50-20T-R](#) [HFW8S-2STAE1HLF](#) [67000-008LF](#) [67000-012LF](#) [ECC576069EU](#) [F1002-B-](#)
[20-20T-R](#) [HFW15S-2STAE1HLF](#) [0781271110](#)