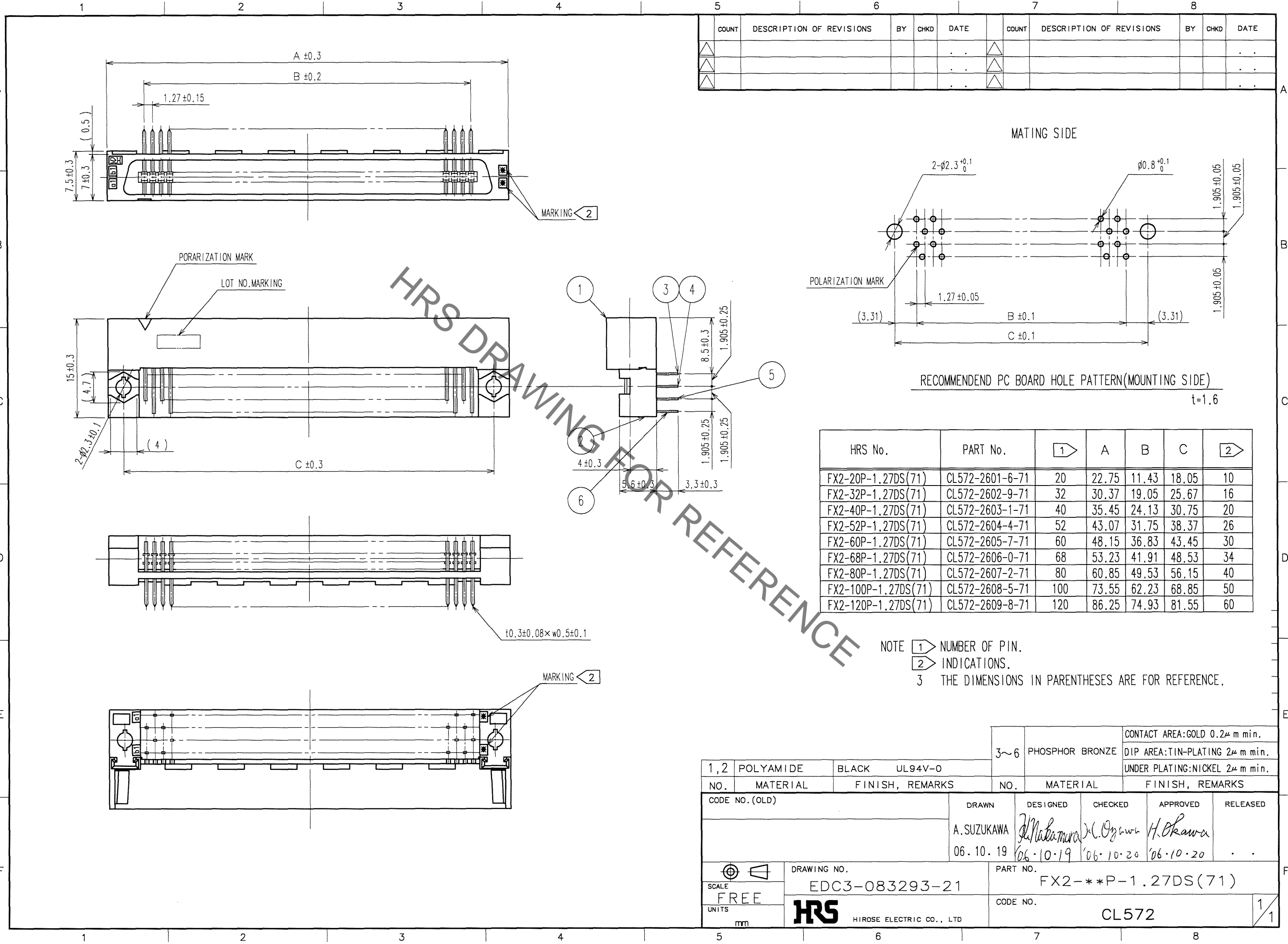


Aug.1.2021 Copyright 2021 HIROSE ELECTRIC CO., LTD. All Rights Reserved.  
In case of consideration for using Automotive equipment / device which demand high reliability, kindly contact our sales window correspondents.



COUNT	DESCRIPTION OF REVISIONS	BY	CHKD	DATE	COUNT	DESCRIPTION OF REVISIONS	BY	CHKD	DATE
△					△				
△					△				
△					△				

HRS DRAWING FOR REFERENCE

RECOMMEND PC BOARD HOLE PATTERN(MOUNTING SIDE)  
t=1.6

HRS No.	PART No.	1	A	B	C	2
FX2-20P-1.27DS(71)	CL572-2601-6-71	20	22.75	11.43	18.05	10
FX2-32P-1.27DS(71)	CL572-2602-9-71	32	30.37	19.05	25.67	16
FX2-40P-1.27DS(71)	CL572-2603-1-71	40	35.45	24.13	30.75	20
FX2-52P-1.27DS(71)	CL572-2604-4-71	52	43.07	31.75	38.37	26
FX2-60P-1.27DS(71)	CL572-2605-7-71	60	48.15	36.83	43.45	30
FX2-68P-1.27DS(71)	CL572-2606-0-71	68	53.23	41.91	48.53	34
FX2-80P-1.27DS(71)	CL572-2607-2-71	80	60.85	49.53	56.15	40
FX2-100P-1.27DS(71)	CL572-2608-5-71	100	73.55	62.23	68.85	50
FX2-120P-1.27DS(71)	CL572-2609-8-71	120	86.25	74.93	81.55	60

NOTE 1 NUMBER OF PIN.  
2 INDICATIONS.  
3 THE DIMENSIONS IN PARENTHESES ARE FOR REFERENCE.

TO  
PCK

1,2	POLYAMIDE	BLACK	UL94V-0	3~6	PHOSPHOR BRONZE	CONTACT AREA:GOLD 0.2μ m min. DIP AREA:TIN-PLATING 2μ m min. UNDER PLATING:NICKEL 2μ m min.
NO.	MATERIAL	FINISH, REMARKS	NO.	MATERIAL	FINISH, REMARKS	
CODE NO. (OLD)	DRAWN		DESIGNED	CHECKED	APPROVED	RELEASED
	A.SUZUKAWA 06.10.19		<i>M. Nabamura</i> 06.10.19	<i>K. Ogawa</i> 06.10.20	<i>H. Okawa</i> 06.10.20	
SCALE FREE	DRAWING NO. EDC3-083293-21		PART NO. FX2-***P-1.27DS(71)			
UNITS mm	HRS HIROSE ELECTRIC CO., LTD		CODE NO. CL572		1/1	

## X-ON Electronics

Largest Supplier of Electrical and Electronic Components

*Click to view similar products for [Board to Board & Mezzanine Connectors](#) category:*

*Click to view products by [Hirose](#) manufacturer:*

Other Similar products are found below :

[589158040000018](#) [MDF7C-18P-2.54DSA\(55\)](#) [FCN-230C068-11](#) [FCN-268F012-G/BD](#) [FCN-268F036-G/BD](#) [FCN-268M012-G/0D](#) [FCN-268M024-G/1D](#) [FCN-723J004/1](#) [MIS-048-01-F-D-DP-K](#) [832-10-034-10-001000](#) [FX4C-80S-1.27DSA](#) [FCN-214Q030-G/0](#) [FCN-234P048-G/0](#) [FCN-235D050-G/C](#) [210-93-314-41-105000](#) [2-22603-0](#) [MDF7-40DP-2.54DSA\(55\)](#) [AXG720047](#) [MIT-114-03-F-D-K](#) [55323-1519](#) [DF33-2P-3.3DSA\(24\)](#) [YFT-20-05-H-03-SB-K](#) [503308-3040](#) [026-6203-PDB](#) [027-6203-PDB](#) [069159702701000](#) [10123981-102LF](#) [101A10019X](#) [55650-0588-C](#) [68682-310LF](#) [68684-306](#) [75140-7012](#) [87471-650](#) [YTW-30-07-H-Q-410-140](#) [FCN-268F024-G0D](#) [10124054-515LF](#) [68685-603](#) [8-1616154-3](#) [MIS-019-01-F-D](#) [FCN-268M024-G/3D](#) [FCN-268M036-G/BD](#) [20021832-06016C1LF](#) [KX15-20KLDL-E1000E](#) [AXE810124](#) [FCN-214J100-G/0](#) [FCN-230C068-E/S](#) [AXE812124](#) [AXE816124](#) [AXE720127](#) [354184](#)