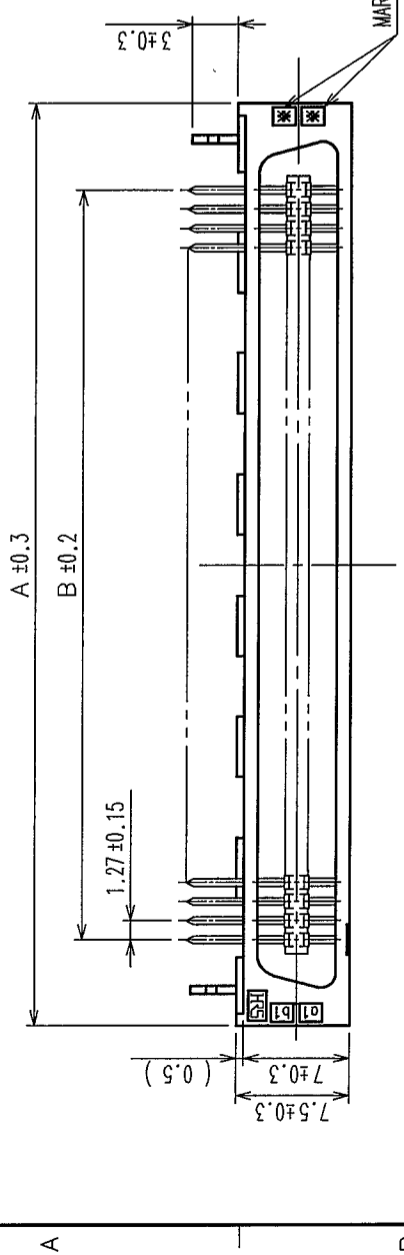


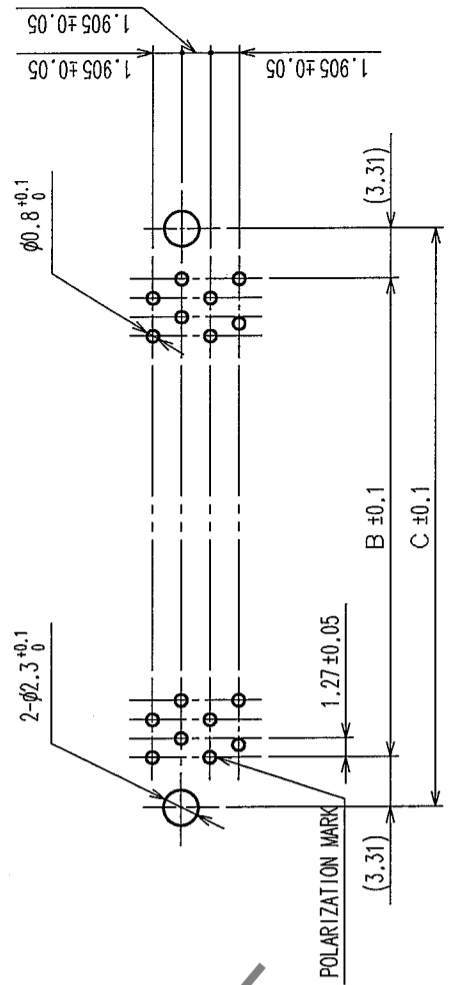
2 In case of consideration for using Automotive equipment / device which demand high reliability, kindly contact our sales window correspondents.

7 8

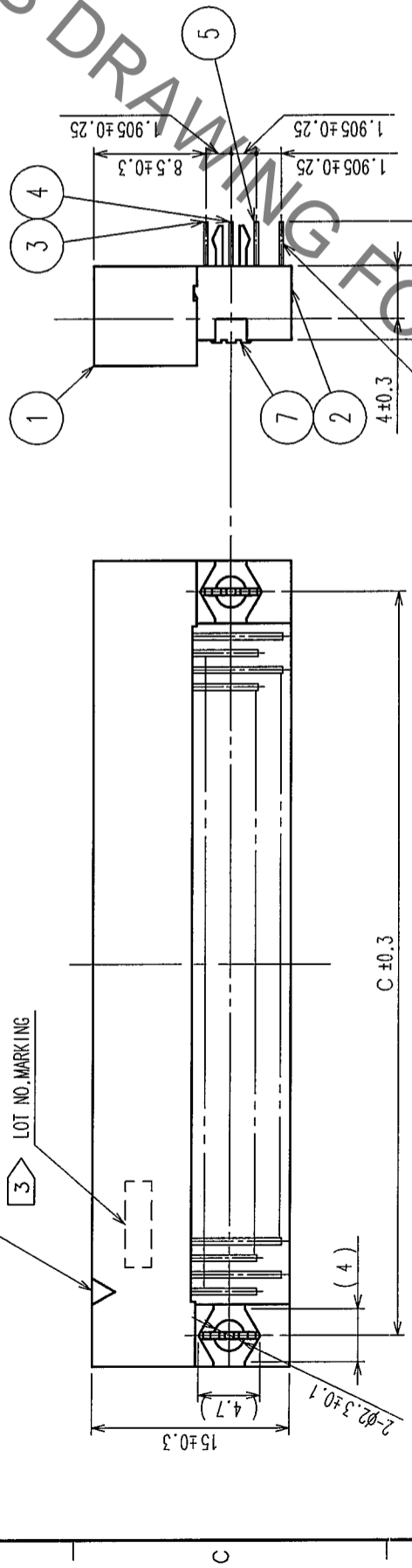
COUNT	DESCRIPTION OF REVISIONS	BY	CHKD	DATE	COUNT	DESCRIPTION OF REVISIONS	BY	CHKD	DATE
△					△				
△					△				
△					△				



MATING SIDE



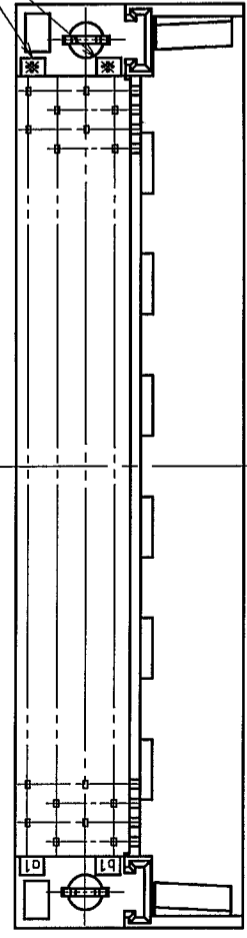
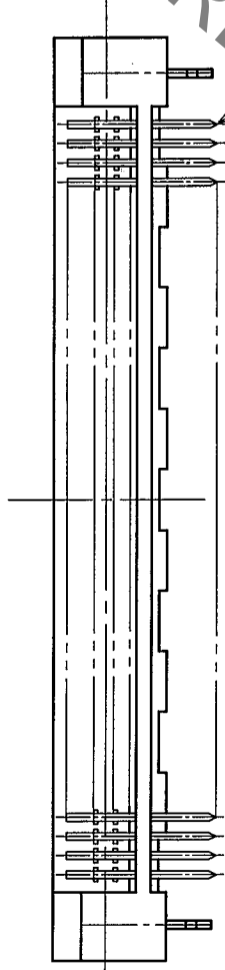
RECOMMEND PC BOARD HOLE PATTERN(MOUNTING SIDE)
t=1.6



HRS No.	PART No.	A	B	C	①	②
FX2-20P-1.27DSL(71)	CL572-2651-4-71	22.75	11.43	18.05	20	10
FX2-32P-1.27DSL(71)	CL572-2652-7-71	30.37	19.05	25.67	32	16
FX2-40P-1.27DSL(71)	CL572-2653-0-71	35.45	24.13	30.75	40	20
FX2-52P-1.27DSL(71)	CL572-2654-2-71	43.07	31.75	38.37	52	26
FX2-60P-1.27DSL(71)	CL572-2655-5-71	48.15	36.83	43.45	60	30
FX2-68P-1.27DSL(71)	CL572-2656-8-71	53.23	41.91	48.53	68	34
FX2-80P-1.27DSL(71)	CL572-2657-0-71	60.85	49.53	56.15	80	40
FX2-100P-1.27DSL(71)	CL572-2658-3-71	73.55	62.23	68.85	100	50
FX2-120P-1.27DSL(71)	CL572-2659-6-71	86.25	74.93	81.55	120	60

NOTE ① NUMBER OF PIN.
② INDICATIONS.
③ SURFACE INDICATED LOT NO. SHALL BE OPTIONAL.
④ THE DIMENSIONS IN PARENTHESES ARE FOR REFERENCE.

HRS DRAWING FOR REFERENCE



NO.	MATERIAL	FINISH, REMARKS	NO.	MATERIAL	FINISH, REMARKS
7	PHOSPHOR BRONZE	TIN PLATED	3~6	PHOSPHOR BRONZE	
1,2	POLYAMIDE	BLACK UL94V-0			

CODE NO. (OLD)	DRAWN	DESIGNED	CHECKED	APPROVED	RELEASED
	<i>A. Sugawara</i>	<i>N. Doi</i>	<i>N. Ogawa</i>	<i>N. Ogawa</i>	
	05-03-25	05-03-25	05-03-25	05-03-25	

DRAWING NO.	PART NO.
EDC3-083294-21	FX2-**-P-1.27DSL(71)

SCALE	UNITS	CODE NO.
FREE	mm	CL572

TO	
PCK	

X-ON Electronics

Largest Supplier of Electrical and Electronic Components

Click to view similar products for [Board to Board & Mezzanine Connectors](#) category:

Click to view products by [Hirose](#) manufacturer:

Other Similar products are found below :

[589158040000018](#) [MDF7C-18P-2.54DSA\(55\)](#) [FCN-230C068-11](#) [FCN-268F012-G/BD](#) [FCN-268F036-G/BD](#) [FCN-268M012-G/0D](#) [FCN-268M024-G/1D](#) [FCN-723J004/1](#) [MIS-048-01-F-D-DP-K](#) [832-10-034-10-001000](#) [FX4C-80S-1.27DSA](#) [FCN-214Q030-G/0](#) [FCN-234P048-G/0](#) [FCN-235D050-G/C](#) [210-93-314-41-105000](#) [2-22603-0](#) [MDF7-40DP-2.54DSA\(55\)](#) [AXG720047](#) [MIT-114-03-F-D-K](#) [55323-1519](#) [DF33-2P-3.3DSA\(24\)](#) [YFT-20-05-H-03-SB-K](#) [503308-3040](#) [026-6203-PDB](#) [027-6203-PDB](#) [069159702701000](#) [10123981-102LF](#) [101A10019X](#) [55650-0588-C](#) [68682-310LF](#) [68684-306](#) [75140-7012](#) [87471-650](#) [YTW-30-07-H-Q-410-140](#) [FCN-268F024-G0D](#) [10124054-515LF](#) [68685-603](#) [8-1616154-3](#) [MIS-019-01-F-D](#) [FCN-268M024-G/3D](#) [FCN-268M036-G/BD](#) [20021832-06016C1LF](#) [KX15-20KLDL-E1000E](#) [AXE810124](#) [FCN-214J100-G/0](#) [FCN-230C068-E/S](#) [AXE812124](#) [AXE816124](#) [AXE720127](#) [354184](#)