

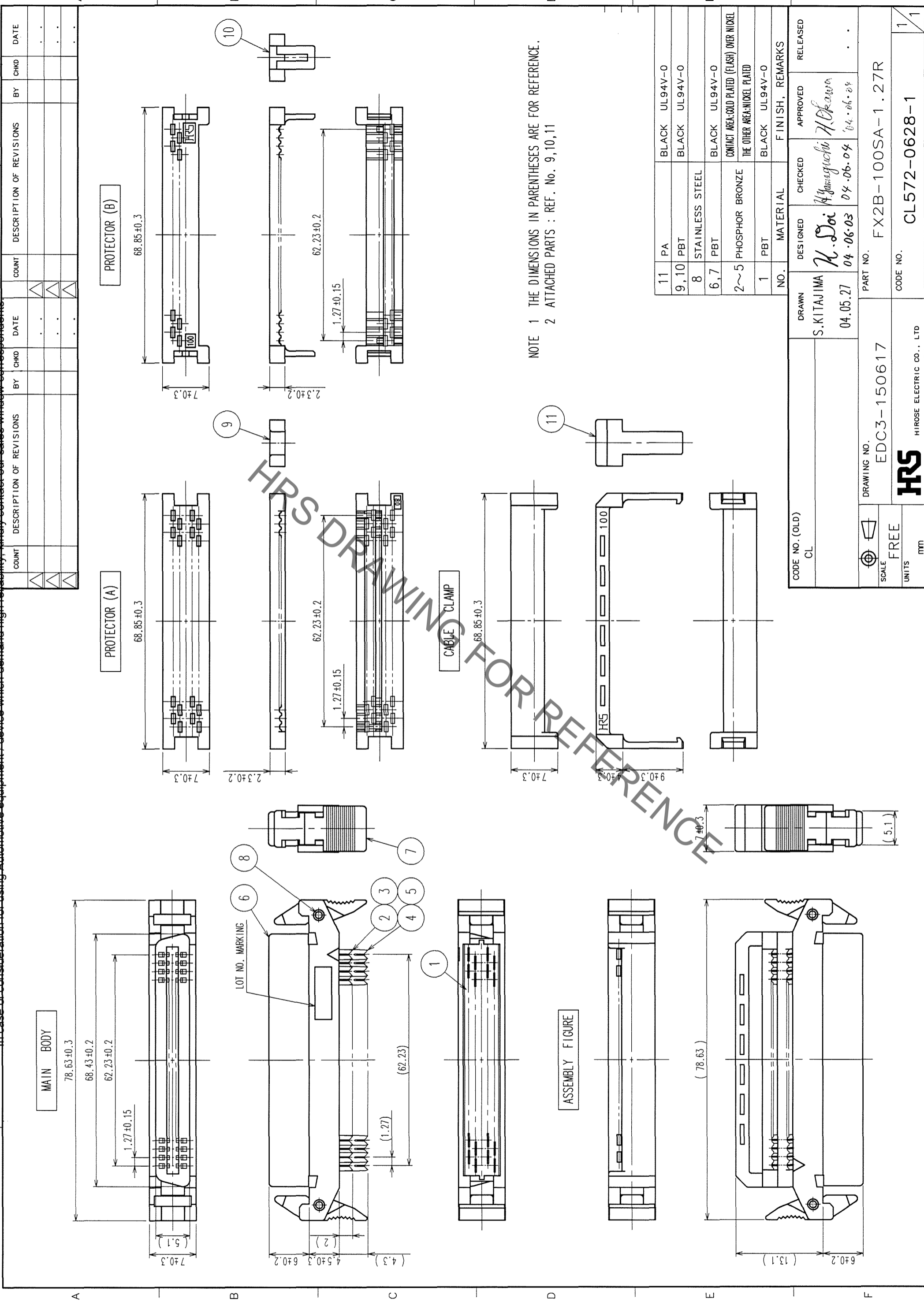
2 In case of consideration for using Automotive equipment / device which demand high reliability, kindly contact our sales window correspondents.

3 Sep.1.2021 Copyright 2021 HIROSE ELECTRIC CO., LTD. All Rights Reserved.

4 In case of consideration for using Automotive equipment / device which demand high reliability, kindly contact our sales window correspondents.

5 In case of consideration for using Automotive equipment / device which demand high reliability, kindly contact our sales window correspondents.

6 In case of consideration for using Automotive equipment / device which demand high reliability, kindly contact our sales window correspondents.



NOTE 1 THE DIMENSIONS IN PARENTHESES ARE FOR REFERENCE.
 2 ATTACHED PARTS : REF. No. 9,10,11

NO.	DESCRIPTION OF REVISIONS	DATE	BY	CHKD	DATE

NO.	DESCRIPTION OF REVISIONS	DATE	BY	CHKD	DATE

11	PA	BLACK	UL94V-0
9,10	PBT	BLACK	UL94V-0
8	STAINLESS STEEL		
6,7	PBT	BLACK	UL94V-0
2~5	PHOSPHOR BRONZE	CONTACT AREA: GOLD PLATED (FLASH) OVER NICKEL THE OTHER AREA: NICKEL PLATED	
1	PBT	BLACK	UL94V-0
NO.	MATERIAL	FINISH, REMARKS	

CODE NO. (OLD)	CL
DRAWING NO.	EDC3-150617
SCALE	FREE
UNITS	mm
DRAWN	S. KITAJIMA
DESIGNED	K. Doi
CHECKED	K. Yamaguchi
APPROVED	A. Okawa
RELEASED	
DATE	04.05.27
DATE	04.06.03
DATE	04.06.04
DATE	04.06.04
PART NO.	FX2B-100SA-1.27R
CODE NO.	CL572-0628-1

TO	
PCK	

X-ON Electronics

Largest Supplier of Electrical and Electronic Components

Click to view similar products for [Board to Board & Mezzanine Connectors](#) category:

Click to view products by [Hirose](#) manufacturer:

Other Similar products are found below :

[589158040000018](#) [MDF7C-18P-2.54DSA\(55\)](#) [FCN-230C068-11](#) [FCN-268F012-G/BD](#) [FCN-268F036-G/BD](#) [FCN-268M012-G/0D](#) [FCN-268M024-G/1D](#) [FCN-723J004/1](#) [MIS-048-01-F-D-DP-K](#) [832-10-034-10-001000](#) [FX4C-80S-1.27DSA](#) [FCN-214Q030-G/0](#) [FCN-234P048-G/0](#) [FCN-235D050-G/C](#) [210-93-314-41-105000](#) [2-22603-0](#) [MDF7-40DP-2.54DSA\(55\)](#) [AXG720047](#) [MIT-114-03-F-D-K](#) [55323-1519](#) [DF33-2P-3.3DSA\(24\)](#) [YFT-20-05-H-03-SB-K](#) [503308-3040](#) [026-6203-PDB](#) [027-6203-PDB](#) [069159702701000](#) [10123981-102LF](#) [101A10019X](#) [55650-0588-C](#) [68682-310LF](#) [68684-306](#) [75140-7012](#) [87471-650](#) [YTW-30-07-H-Q-410-140](#) [FCN-268F024-G0D](#) [10124054-515LF](#) [68685-603](#) [8-1616154-3](#) [MIS-019-01-F-D](#) [FCN-268M024-G/3D](#) [FCN-268M036-G/BD](#) [20021832-06016C1LF](#) [KX15-20KLDL-E1000E](#) [AXE810124](#) [FCN-214J100-G/0](#) [FCN-230C068-E/S](#) [AXE812124](#) [AXE816124](#) [AXE720127](#) [354184](#)