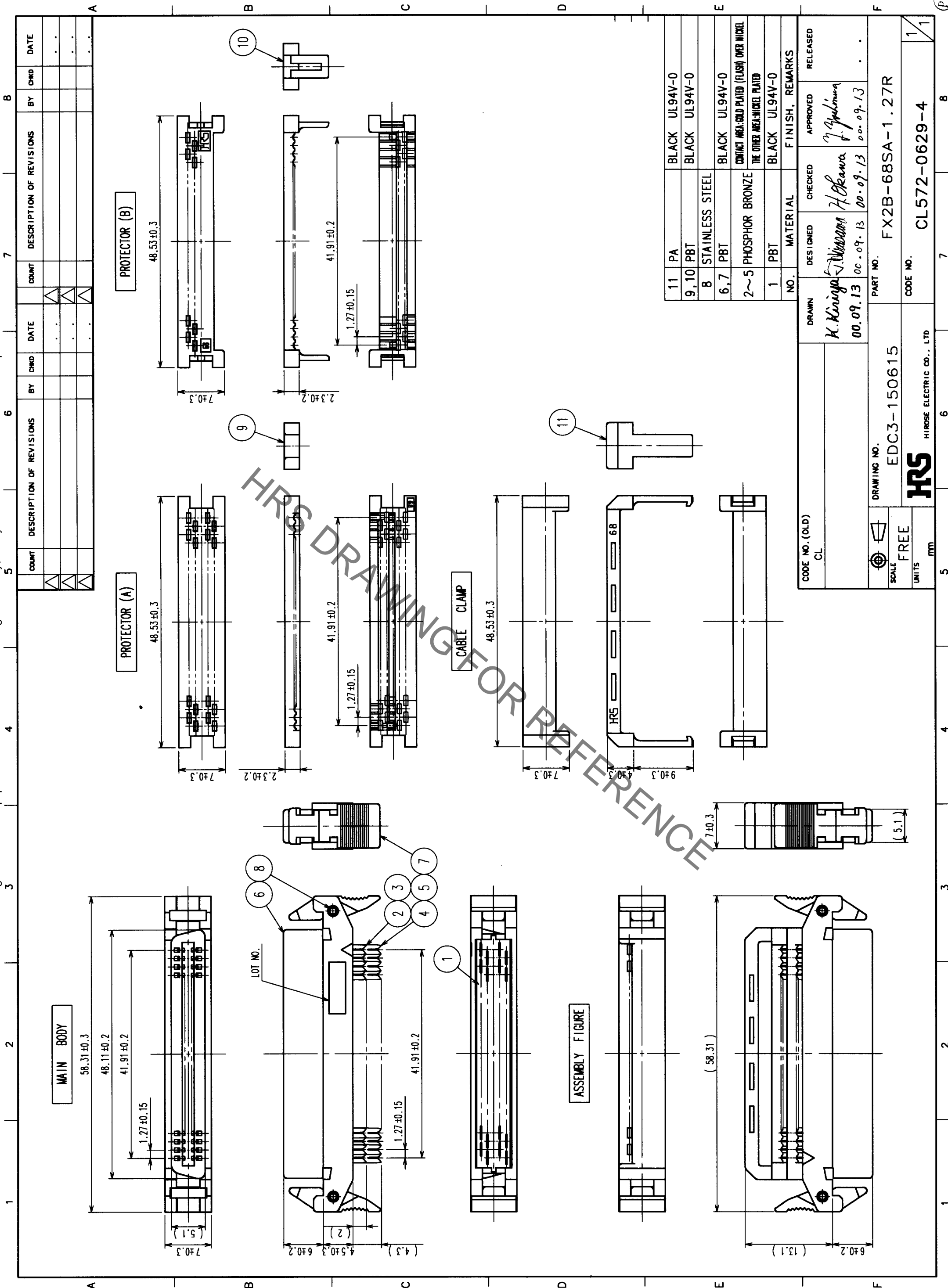


Aug.1.2021 Copyright 2021 HIROSE ELECTRIC CO., LTD. All Rights Reserved.
 In case of consideration for using Automotive equipment / device which demand high reliability, kindly contact our sales window correspondents.



COUNT	DESCRIPTION OF REVISIONS	BY	CHKD	DATE	COUNT	DESCRIPTION OF REVISIONS	BY	CHKD	DATE

11	PA	BLACK	UL94V-0
9,10	PBT	BLACK	UL94V-0
8	STAINLESS STEEL		
6,7	PBT	BLACK	UL94V-0
2~5	PHOSPHOR BRONZE	CONTACT AREA: GOLD PLATED (FLASH) OVER NICKEL THE OTHER AREA: NICKEL PLATED	
1	PBT	BLACK	UL94V-0
NO.	MATERIAL	FINISH, REMARKS	

CODE NO. (OLD) CL	DRAWN K. Kingyo	DESIGNED Y. Yamada	CHECKED H. Okawa	APPROVED T. Yamamoto	RELEASED
SCALE FREE	00.09.13	00.09.13	00.09.13	00.09.13	00.09.13
UNITS mm	DRAWING NO. EDC3-150615		PART NO. FX2B-68SA-1.27R		
	HRS HIROSE ELECTRIC CO., LTD		CODE NO. CL572-0629-4		

TO	
PCK	

1 2 3 4 5 6 7 8 9 10 11

X-ON Electronics

Largest Supplier of Electrical and Electronic Components

Click to view similar products for [Board to Board & Mezzanine Connectors](#) category:

Click to view products by [Hirose](#) manufacturer:

Other Similar products are found below :

[589158040000018](#) [MDF7C-18P-2.54DSA\(55\)](#) [FCN-230C068-11](#) [FCN-268F012-G/BD](#) [FCN-268F036-G/BD](#) [FCN-268M012-G/0D](#) [FCN-268M024-G/1D](#) [FCN-723J004/1](#) [MIS-048-01-F-D-DP-K](#) [832-10-034-10-001000](#) [FX4C-80S-1.27DSA](#) [FCN-214Q030-G/0](#) [FCN-234P048-G/0](#) [FCN-235D050-G/C](#) [210-93-314-41-105000](#) [2-22603-0](#) [MDF7-40DP-2.54DSA\(55\)](#) [AXG720047](#) [MIT-114-03-F-D-K](#) [55323-1519](#) [DF33-2P-3.3DSA\(24\)](#) [YFT-20-05-H-03-SB-K](#) [503308-3040](#) [026-6203-PDB](#) [027-6203-PDB](#) [069159702701000](#) [10123981-102LF](#) [101A10019X](#) [55650-0588-C](#) [68682-310LF](#) [68684-306](#) [75140-7012](#) [87471-650](#) [YTW-30-07-H-Q-410-140](#) [FCN-268F024-G0D](#) [10124054-515LF](#) [68685-603](#) [8-1616154-3](#) [MIS-019-01-F-D](#) [FCN-268M024-G/3D](#) [FCN-268M036-G/BD](#) [20021832-06016C1LF](#) [KX15-20KLDL-E1000E](#) [AXE810124](#) [FCN-214J100-G/0](#) [FCN-230C068-E/S](#) [AXE812124](#) [AXE816124](#) [AXE720127](#) [354184](#)