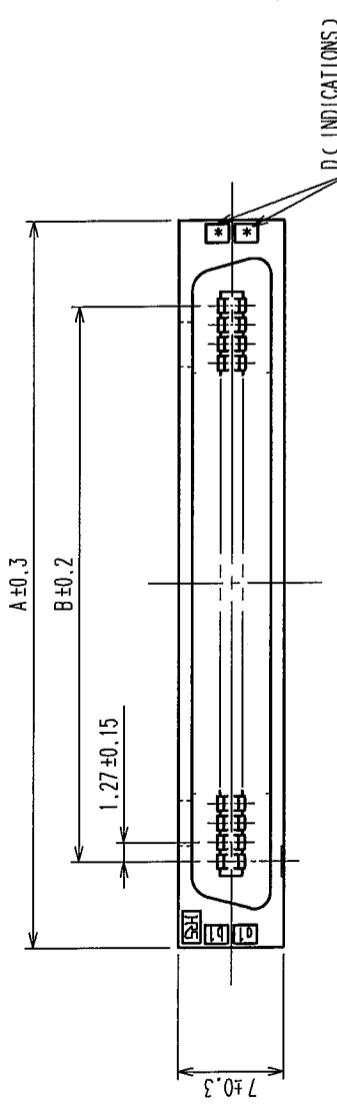
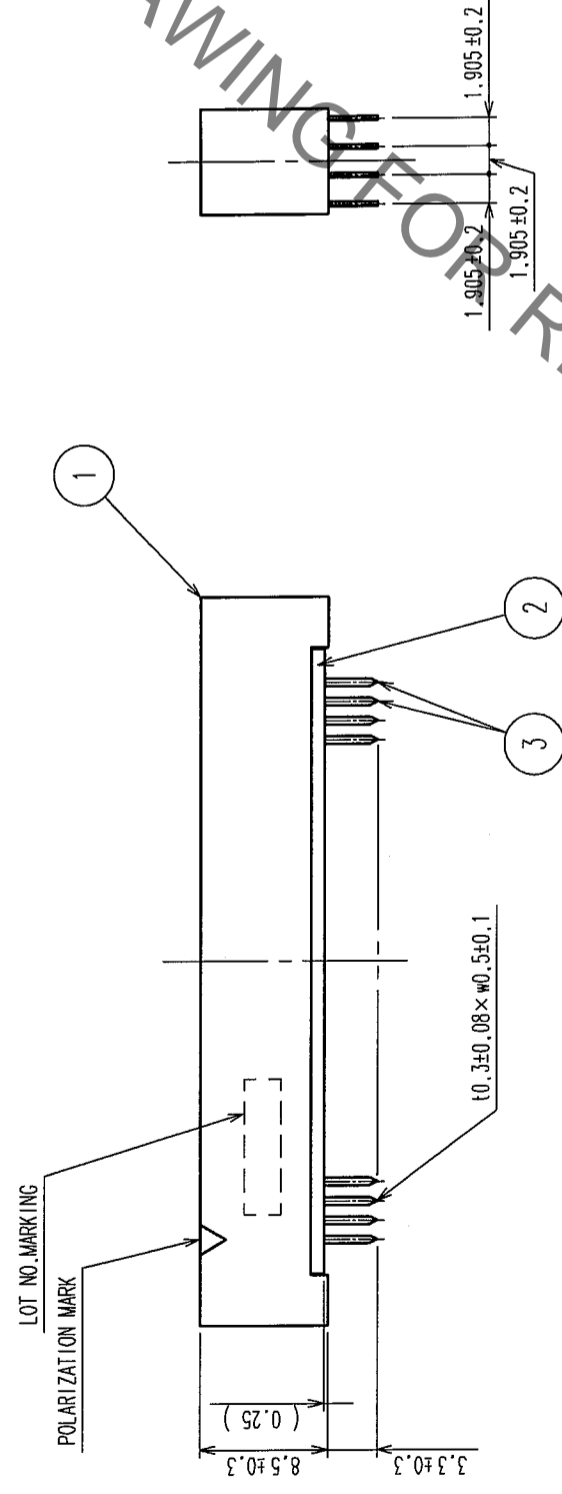
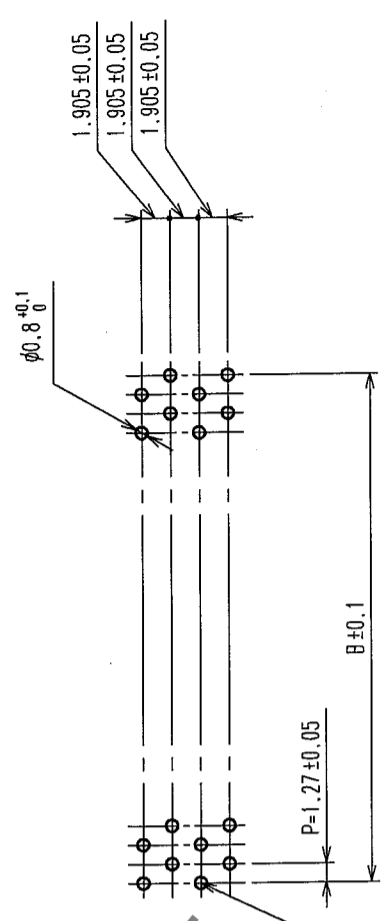


2 In case of consideration for using Automotive equipment / device which demand high reliability, kindly contact our sales window correspondents.

COUNT	DESCRIPTION OF REVISIONS	BY	CHKD	DATE	COUNT	DESCRIPTION OF REVISIONS	BY	CHKD	DATE
△					△				
△					△				
△					△				

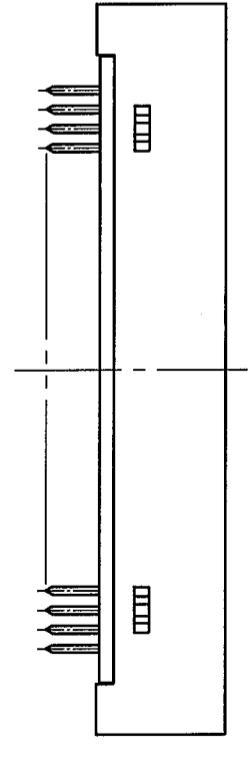
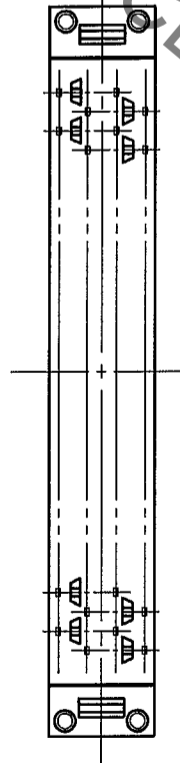


RECOMMEND PC BOARD HOLE PATTERN (MOUNTING SIDE)
t=1.6



PART No.	CODE No.	2	A	B	C	D
FX2CA-20P-1.27DSA(71)	CL572-2301-2-71	20	22.75	11.43	19.05	10
FX2CA-32P-1.27DSA(71)	CL572-2302-5-71	32	30.37	19.05	26.67	16
FX2CA-40P-1.27DSA(71)	CL572-2303-8-71	40	35.45	24.13	31.75	20
FX2CA-52P-1.27DSA(71)	CL572-2304-0-71	52	43.07	31.75	39.37	26
FX2CA-60P-1.27DSA(71)	CL572-2305-3-71	60	48.15	36.83	44.45	30
FX2CA-68P-1.27DSA(71)	CL572-2306-6-71	68	53.23	41.91	49.53	34
FX2CA-80P-1.27DSA(71)	CL572-2307-9-71	80	60.85	49.53	57.15	40
FX2CA-100P-1.27DSA(71)	CL572-2308-1-71	100	73.55	62.23	69.85	50
FX2CA-120P-1.27DSA(71)	CL572-2309-4-71	120	86.25	74.93	82.55	60

NOTES 1. THE DIMENSIONS IN PARENTHESES ARE FOR REFERENCE.
2 NUMBER OF PIN.



2	POLYAMIDE	BLACK	UL94V-0	3	PHOSPHOR BRONZE	CONTACT AREA: GOLD 0.2μm min
1	POLYAMIDE	BLACK	UL94V-0			DIP AREA: TIN-PLATING 2μm min
						UNDER PLATING: NICKEL 2μm min
NO.	MATERIAL	FINISH, REMARKS	NO.	MATERIAL	FINISH, REMARKS	
CODE NO. (OLD)	CL					
DRAWN	I. OKAYAMA	DESIGNED	K. NAKAMURA	CHECKED	H. OKAWA	APPROVED
DATE	04.06.02	DATE	04.06.02	DATE	04.06.09	DATE
DRAWING NO. EDC3-083051-21			PART NO. FX2CA-**P-1.27DSA(71)			
SCALE FREE			CODE NO. CL572			
UNITS mm			HIROSE ELECTRIC CO., LTD			

TO
PCK

X-ON Electronics

Largest Supplier of Electrical and Electronic Components

Click to view similar products for [Board to Board & Mezzanine Connectors](#) category:

Click to view products by [Hirose](#) manufacturer:

Other Similar products are found below :

[589158040000018](#) [MDF7C-18P-2.54DSA\(55\)](#) [FCN-230C068-11](#) [FCN-268F012-G/BD](#) [FCN-268F036-G/BD](#) [FCN-268M012-G/0D](#) [FCN-268M024-G/1D](#) [FCN-723J004/1](#) [MIS-048-01-F-D-DP-K](#) [832-10-034-10-001000](#) [FX4C-80S-1.27DSA](#) [FCN-214Q030-G/0](#) [FCN-234P048-G/0](#) [FCN-235D050-G/C](#) [210-93-314-41-105000](#) [2-22603-0](#) [MDF7-40DP-2.54DSA\(55\)](#) [AXG720047](#) [MIT-114-03-F-D-K](#) [55323-1519](#) [DF33-2P-3.3DSA\(24\)](#) [YFT-20-05-H-03-SB-K](#) [503308-3040](#) [026-6203-PDB](#) [027-6203-PDB](#) [069159702701000](#) [10123981-102LF](#) [101A10019X](#) [55650-0588-C](#) [68682-310LF](#) [68684-306](#) [75140-7012](#) [87471-650](#) [YTW-30-07-H-Q-410-140](#) [FCN-268F024-G0D](#) [10124054-515LF](#) [68685-603](#) [8-1616154-3](#) [MIS-019-01-F-D](#) [FCN-268M024-G/3D](#) [FCN-268M036-G/BD](#) [20021832-06016C1LF](#) [KX15-20KLDL-E1000E](#) [AXE810124](#) [FCN-214J100-G/0](#) [FCN-230C068-E/S](#) [AXE812124](#) [AXE816124](#) [AXE720127](#) [354184](#)