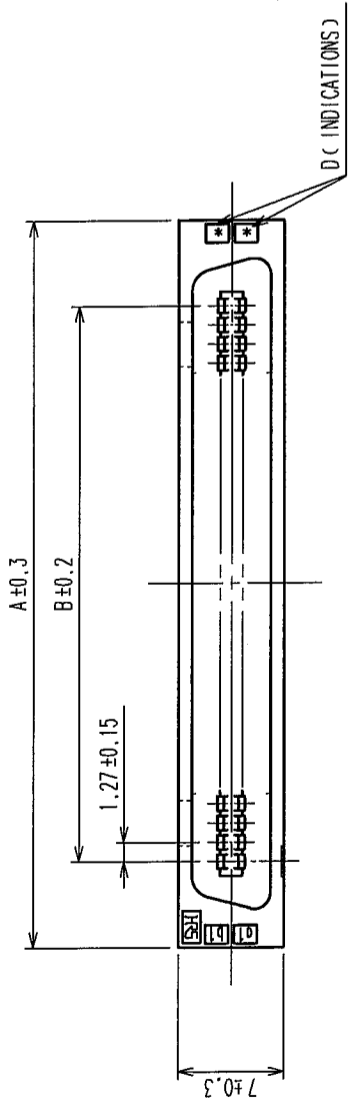
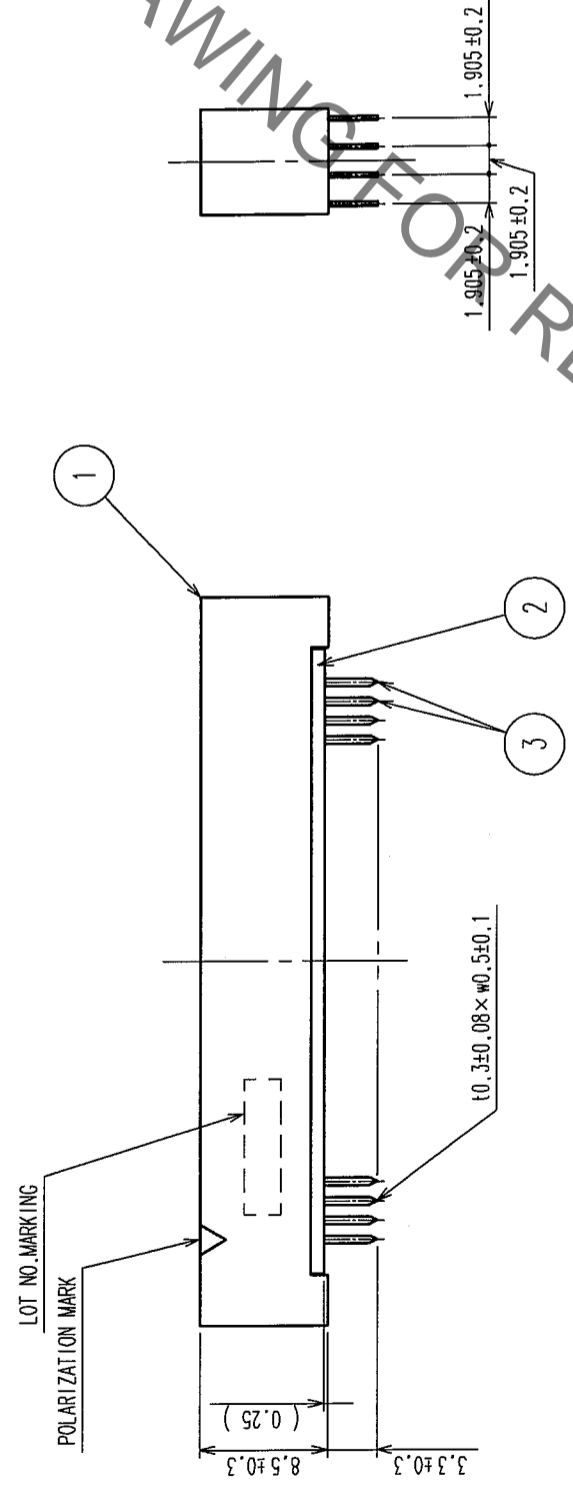
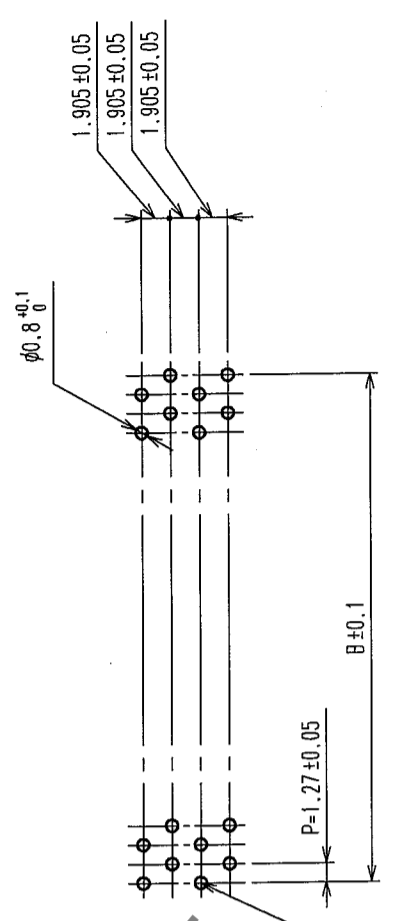


2 In case of consideration for using Automotive equipment / device which demand high reliability, kindly contact our sales window correspondents.

COUNT	DESCRIPTION OF REVISIONS	BY	CHKD	DATE	COUNT	DESCRIPTION OF REVISIONS	BY	CHKD	DATE
△					△				
△					△				
△					△				

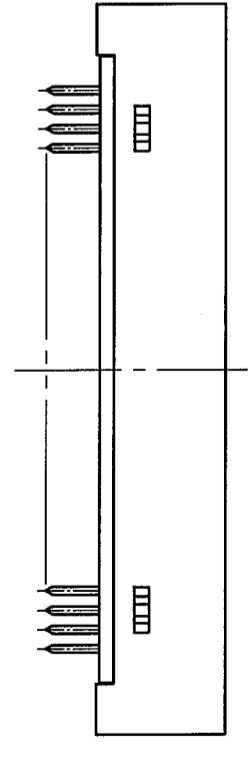
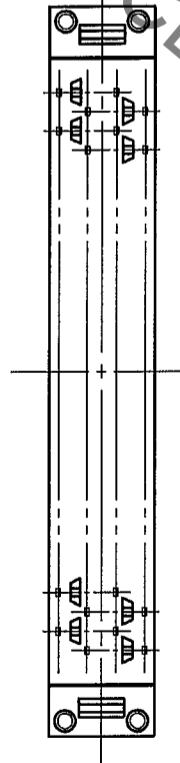


RECOMMEND PC BOARD HOLE PATTERN ( MOUNTING SIDE )  
t=1.6



PART No.	CODE No.	2	A	B	C	D
FX2CA-20P-1.27DSA(71)	CL572-2301-2-71	20	22.75	11.43	19.05	10
FX2CA-32P-1.27DSA(71)	CL572-2302-5-71	32	30.37	19.05	26.67	16
FX2CA-40P-1.27DSA(71)	CL572-2303-8-71	40	35.45	24.13	31.75	20
FX2CA-52P-1.27DSA(71)	CL572-2304-0-71	52	43.07	31.75	39.37	26
FX2CA-60P-1.27DSA(71)	CL572-2305-3-71	60	48.15	36.83	44.45	30
FX2CA-68P-1.27DSA(71)	CL572-2306-6-71	68	53.23	41.91	49.53	34
FX2CA-80P-1.27DSA(71)	CL572-2307-9-71	80	60.85	49.53	57.15	40
FX2CA-100P-1.27DSA(71)	CL572-2308-1-71	100	73.55	62.23	69.85	50
FX2CA-120P-1.27DSA(71)	CL572-2309-4-71	120	86.25	74.93	82.55	60

NOTES 1. THE DIMENSIONS IN PARENTHESES ARE FOR REFERENCE.  
2 NUMBER OF PIN.



2	POLYAMIDE	BLACK	UL94V-0	3	PHOSPHOR BRONZE	CONTACT AREA: GOLD 0.2μm min
1	POLYAMIDE	BLACK	UL94V-0			DIP AREA: TIN-PLATING 2μm min
						UNDER PLATING: NICKEL 2μm min
NO.	MATERIAL	FINISH, REMARKS	NO.	MATERIAL	FINISH, REMARKS	
CODE NO. (OLD)	CL					
DRAWN		I. OKAYAMA	DESIGNED	K. NAKAMURA	APPROVED	H. OKAWA
SCALE		FREE	DATE		04.06.02	04.06.09
UNITS		mm	PART NO.		FX2CA-**P-1.27DSA(71)	
			DRAWING NO.		EDC3-083051-21	
			CODE NO.		CL572	
			HRS		HIROSE ELECTRIC CO., LTD	

TO  
PCK

## X-ON Electronics

Largest Supplier of Electrical and Electronic Components

*Click to view similar products for [Board to Board & Mezzanine Connectors](#) category:*

*Click to view products by [Hirose](#) manufacturer:*

Other Similar products are found below :

[589158040000018](#) [MDF7C-18P-2.54DSA\(55\)](#) [FCN-230C068-11](#) [FCN-268F012-G/BD](#) [FCN-268F036-G/BD](#) [FCN-268M012-G/0D](#) [FCN-268M024-G/1D](#) [FCN-723J004/1](#) [MIS-048-01-F-D-DP-K](#) [832-10-034-10-001000](#) [FX4C-80S-1.27DSA](#) [FCN-214Q030-G/0](#) [FCN-234P048-G/0](#) [FCN-235D050-G/C](#) [210-93-314-41-105000](#) [2-22603-0](#) [MDF7-40DP-2.54DSA\(55\)](#) [AXG720047](#) [MIT-114-03-F-D-K](#) [55323-1519](#) [DF33-2P-3.3DSA\(24\)](#) [YFT-20-05-H-03-SB-K](#) [503308-3040](#) [026-6203-PDB](#) [027-6203-PDB](#) [069159702701000](#) [10123981-102LF](#) [101A10019X](#) [55650-0588-C](#) [68682-310LF](#) [68684-306](#) [75140-7012](#) [87471-650](#) [YTW-30-07-H-Q-410-140](#) [FCN-268F024-G0D](#) [10124054-515LF](#) [68685-603](#) [8-1616154-3](#) [MIS-019-01-F-D](#) [FCN-268M024-G/3D](#) [FCN-268M036-G/BD](#) [20021832-06016C1LF](#) [KX15-20KLDL-E1000E](#) [AXE810124](#) [FCN-214J100-G/0](#) [FCN-230C068-E/S](#) [AXE812124](#) [AXE816124](#) [AXE720127](#) [354184](#)