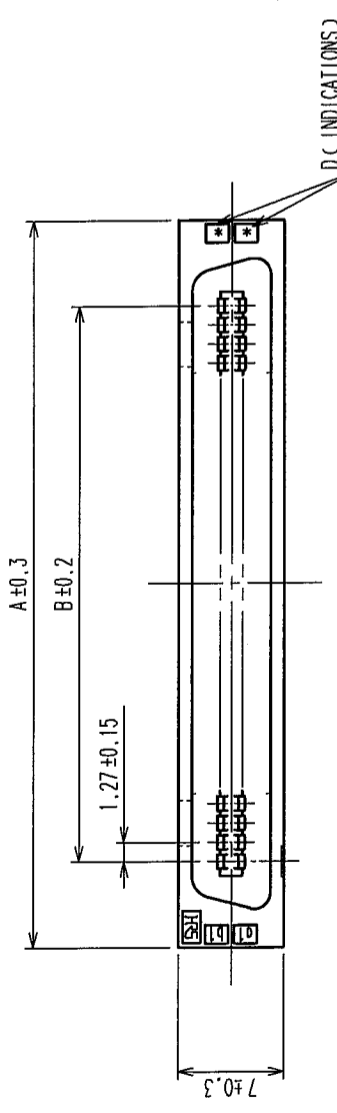


2 In case of consideration for using Automotive equipment / device which demand high reliability, kindly contact our sales window correspondents.

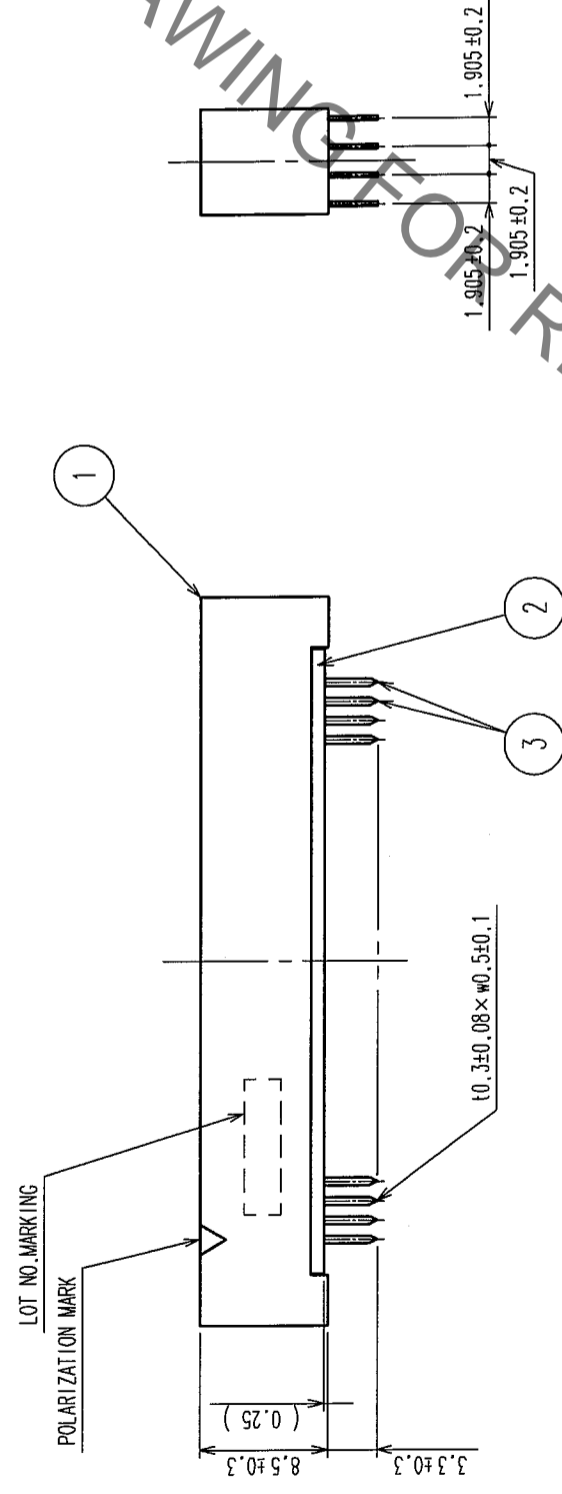
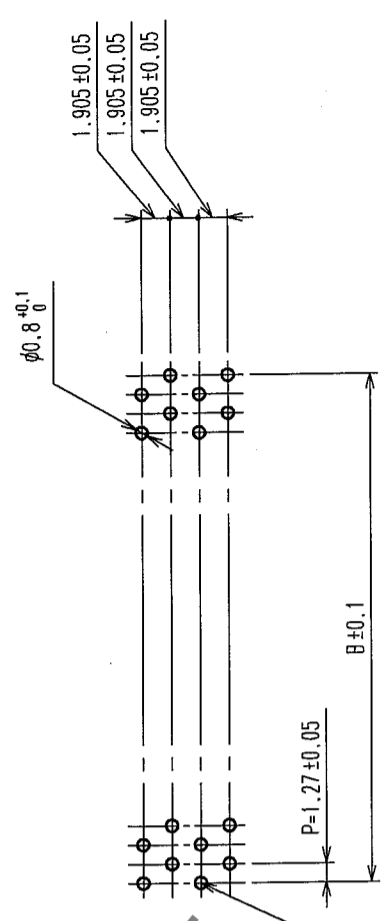
7

8

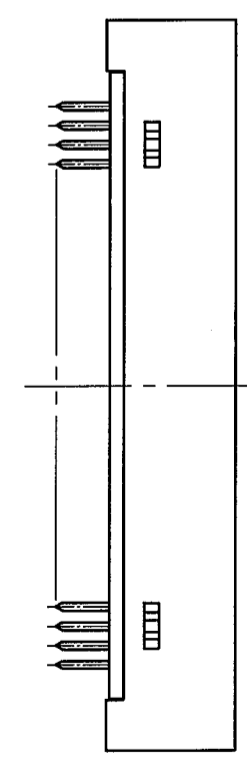
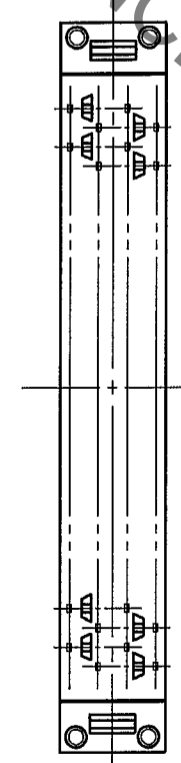
COUNT	DESCRIPTION OF REVISIONS	BY	CHKD	DATE	COUNT	DESCRIPTION OF REVISIONS	BY	CHKD	DATE
△					△				
△					△				



RECOMMEND PC BOARD HOLE PATTERN (MOUNTING SIDE)
t=1.6



PART No.	CODE No.	2	A	B	C	D
FX2CA-20P-1.27DSA(71)	CL572-2301-2-71	20	22.75	11.43	19.05	10
FX2CA-32P-1.27DSA(71)	CL572-2302-5-71	32	30.37	19.05	26.67	16
FX2CA-40P-1.27DSA(71)	CL572-2303-8-71	40	35.45	24.13	31.75	20
FX2CA-52P-1.27DSA(71)	CL572-2304-0-71	52	43.07	31.75	39.37	26
FX2CA-60P-1.27DSA(71)	CL572-2305-3-71	60	48.15	36.83	44.45	30
FX2CA-68P-1.27DSA(71)	CL572-2306-6-71	68	53.23	41.91	49.53	34
FX2CA-80P-1.27DSA(71)	CL572-2307-9-71	80	60.85	49.53	57.15	40
FX2CA-100P-1.27DSA(71)	CL572-2308-1-71	100	73.55	62.23	69.85	50
FX2CA-120P-1.27DSA(71)	CL572-2309-4-71	120	86.25	74.93	82.55	60



NOTES 1. THE DIMENSIONS IN PARENTHESES ARE FOR REFERENCE.
2. NUMBER OF PIN.

NO.	MATERIAL	FINISH, REMARKS	NO.	MATERIAL	FINISH, REMARKS
2	POLYAMIDE	BLACK	3	PHOSPHOR BRONZE	
1	POLYAMIDE	BLACK			

CONTACT AREA:	DIP AREA:	UNDER PLATING:
GOLD 0.2μm min	TIN-PLATING 2μm min	NICKEL 2μm min

CODE NO. (OLD)	CL	DRAWN	DESIGNED	CHECKED	APPROVED	RELEASED
		I. OKAYAMA	K. NAKAMURA	H. OKAWA	H. OKAWA	
		04.06.02	04.06.02	04.06.09	04.06.09	04.06.09

DRAWING NO.	PART NO.
EDC3-083051-21	FX2CA-**P-1.27DSA(71)

SCALE	UNITS	CODE NO.
FREE	mm	CL572

TO	
PCK	

HRS HIROSE ELECTRIC CO., LTD

CL572

X-ON Electronics

Largest Supplier of Electrical and Electronic Components

Click to view similar products for [Board to Board & Mezzanine Connectors](#) category:

Click to view products by [Hirose](#) manufacturer:

Other Similar products are found below :

[589158040000018](#) [MDF7C-18P-2.54DSA\(55\)](#) [FCN-230C068-11](#) [FCN-268F012-G/BD](#) [FCN-268F036-G/BD](#) [FCN-268M012-G/0D](#) [FCN-268M024-G/1D](#) [FCN-723J004/1](#) [MIS-048-01-F-D-DP-K](#) [832-10-034-10-001000](#) [FX4C-80S-1.27DSA](#) [FCN-214Q030-G/0](#) [FCN-234P048-G/0](#) [FCN-235D050-G/C](#) [210-93-314-41-105000](#) [2-22603-0](#) [MDF7-40DP-2.54DSA\(55\)](#) [AXG720047](#) [MIT-114-03-F-D-K](#) [55323-1519](#) [DF33-2P-3.3DSA\(24\)](#) [YFT-20-05-H-03-SB-K](#) [503308-3040](#) [026-6203-PDB](#) [027-6203-PDB](#) [069159702701000](#) [10123981-102LF](#) [101A10019X](#) [55650-0588-C](#) [68682-310LF](#) [68684-306](#) [75140-7012](#) [87471-650](#) [YTW-30-07-H-Q-410-140](#) [FCN-268F024-G0D](#) [10124054-515LF](#) [68685-603](#) [8-1616154-3](#) [MIS-019-01-F-D](#) [FCN-268M024-G/3D](#) [FCN-268M036-G/BD](#) [20021832-06016C1LF](#) [KX15-20KLDL-E1000E](#) [AXE810124](#) [FCN-214J100-G/0](#) [FCN-230C068-E/S](#) [AXE812124](#) [AXE816124](#) [AXE720127](#) [354184](#)